



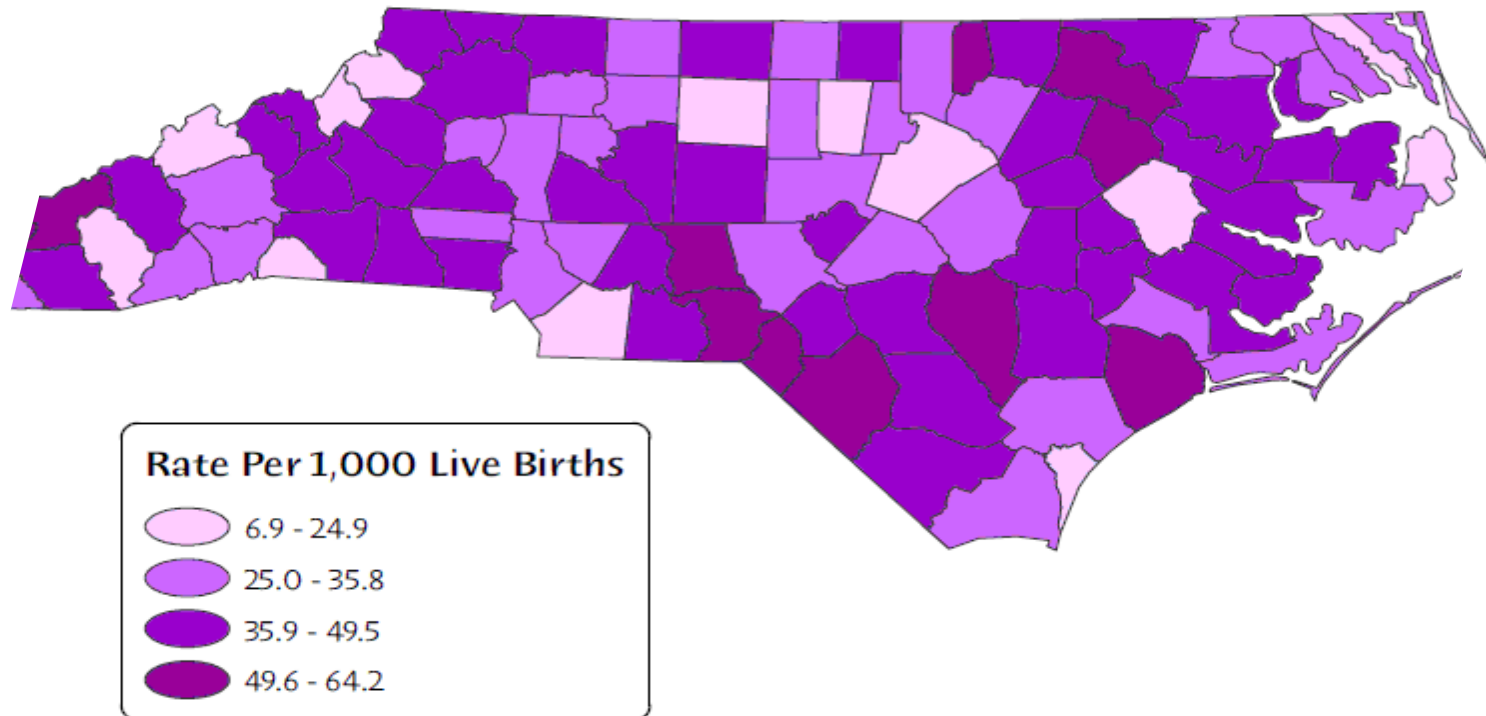
February 24, 2016

North Carolina Teen Pregnancy Prevention

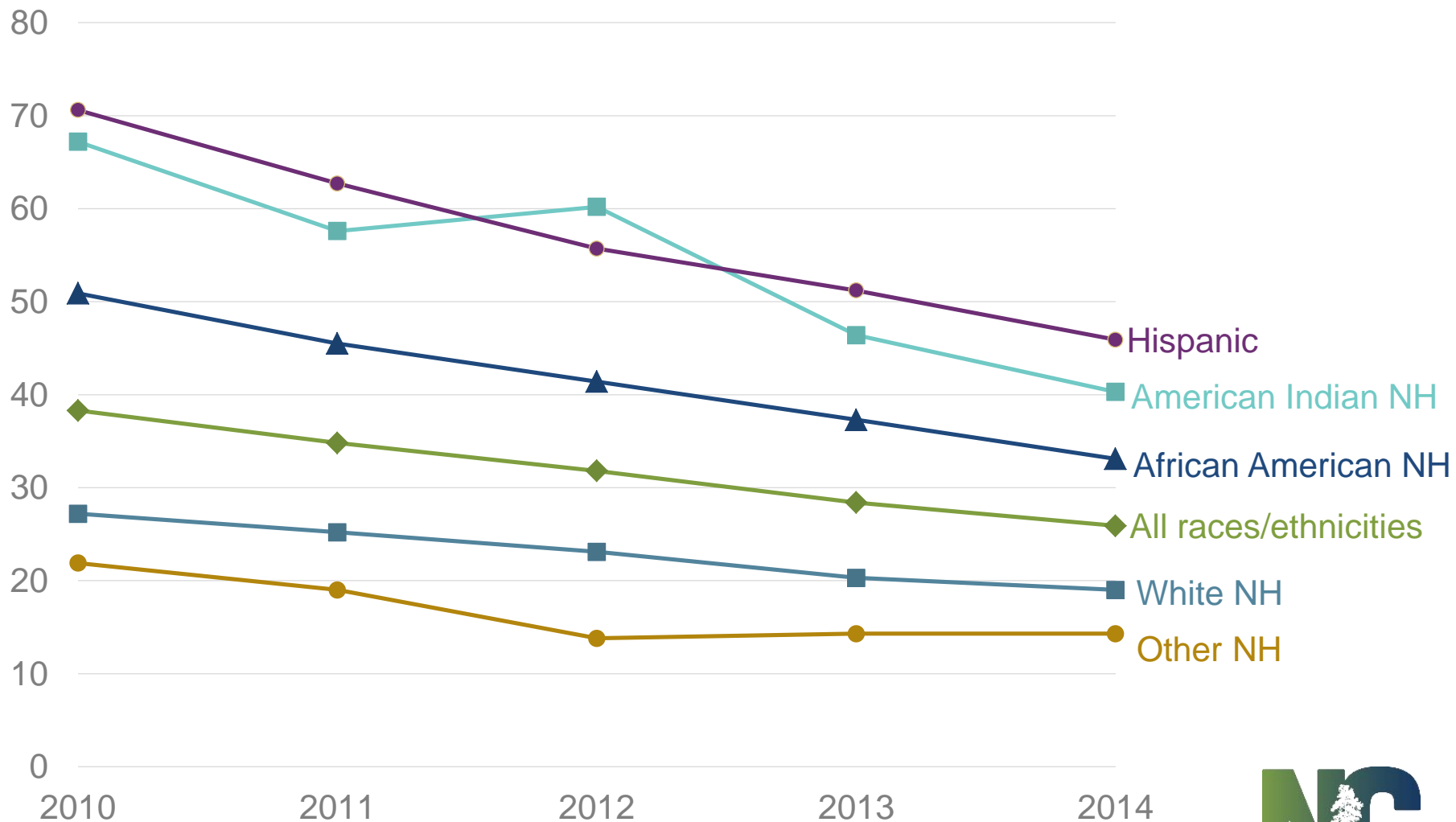


State of Teen Pregnancy in North Carolina

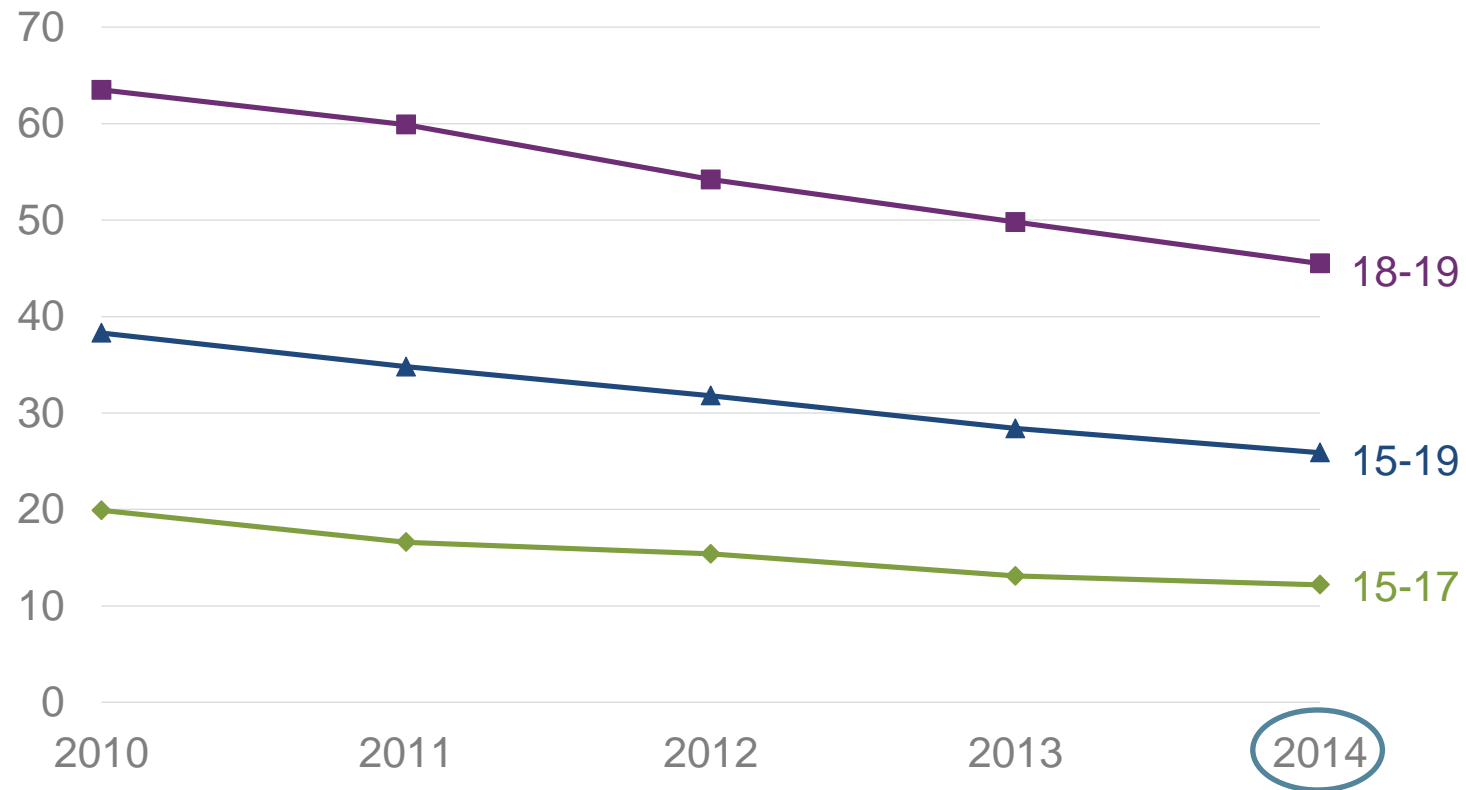
North Carolina Teen (Females Age 15 to 19) Fertility Rates 2010-2014



Health Disparities in Teen Birth Rates



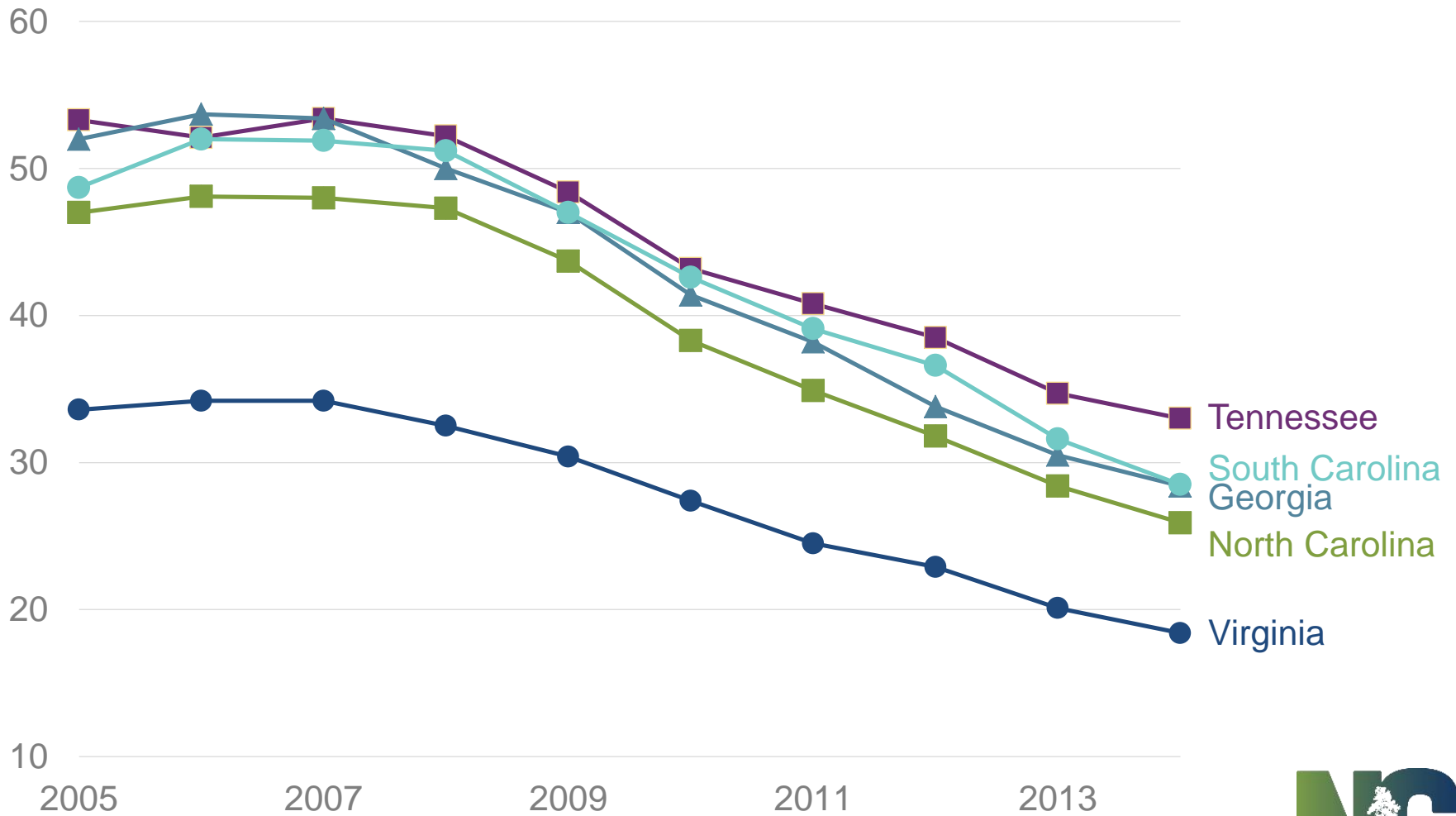
NC Teen Birth Rates by Age, 2010-2014



In 2014, 72% of teen births occurred in females ages 18-19. ←



Teen Birth Rates, Southeastern US, 2005 – 2014

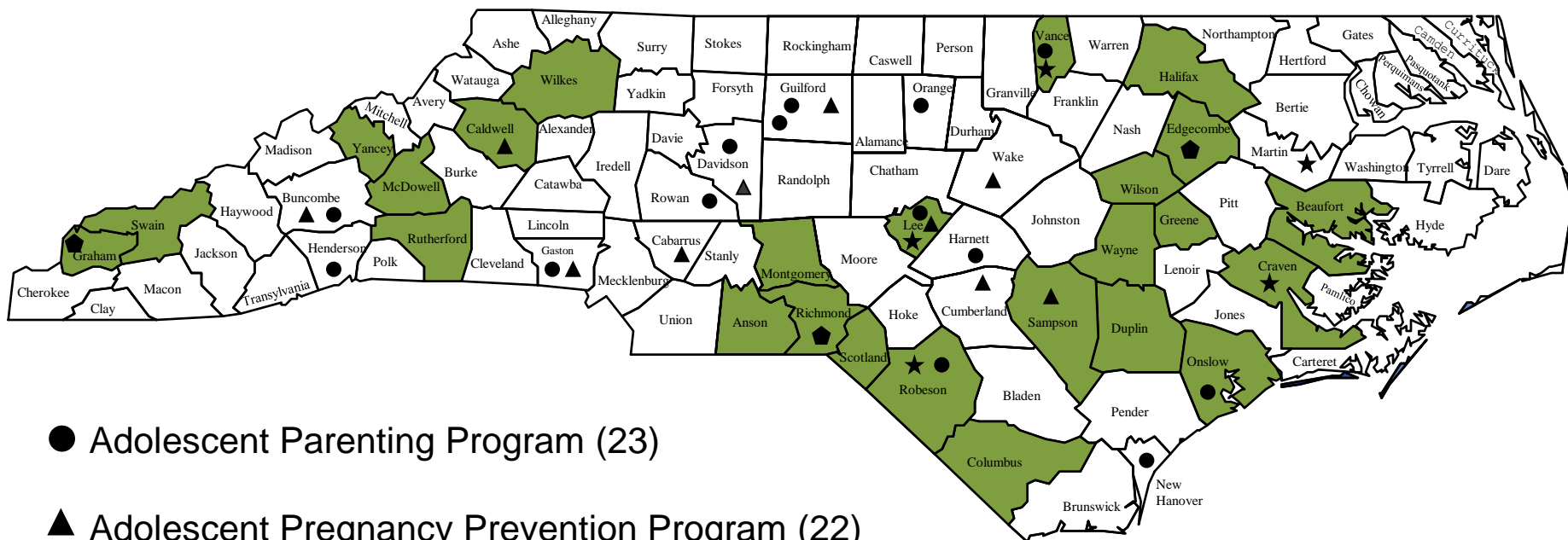


Teen Pregnancy Prevention Initiatives (TPPI)

- **Secondary Teen Pregnancy Prevention Programs**
 - Adolescent Parenting Program
- **Primary Teen Pregnancy Prevention Programs**
 - Adolescent Pregnancy Prevention Program
 - Personal Responsibility Education Program
 - Project REACH



Currently Funded TPPI Sites



● Adolescent Parenting Program (23)

▲ Adolescent Pregnancy Prevention Program (22)

★ Personal Responsibility Education Program (6)

◆ Project REACH (3)

■ Targeted County - counties with teen birth rates in the top 25% based on five year average (2010-2014)



Secondary Pregnancy Prevention

Adolescent Parenting Program

- Evidence-based home visiting
- Peer group education

Outcomes

- For teen parents:
 1. Reduce repeat pregnancies
 2. Increase high school graduation rates
- For their children:
 1. Reduce child maltreatment
 2. Improve school readiness



Evidence-Based Home Visiting Outcomes

Parents as Teachers

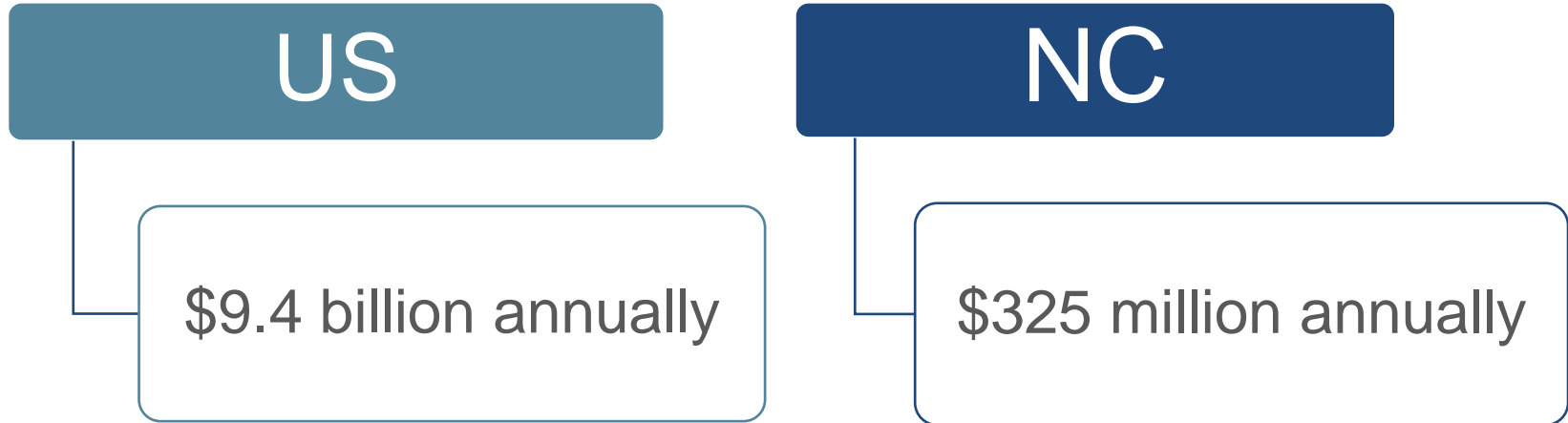
- Improved child development & school readiness
- Positive parenting practices
- Decreased child maltreatment

Partners for a Health Baby

- Improved child development
- Increased maternal responsiveness of teen mothers
- Reduced rates of abuse and neglect



Public Costs of Teen Childbearing



Costs include

- Participation in child welfare, criminal justice and public health
- Participation of teen mothers in public assistance
- Lost tax revenue due to reduced education, earnings and spending of teen mothers, their partners and children



Early Childhood Education & Teen Pregnancy Prevention

Abecedarian Project

Chapel Hill, NC

Served children from infancy
for a maximum of 8 years

Full-time weekday childcare

Age 21: Participants **less
likely to be teen parents**

Age 30: Participants **more
likely to have delayed
parenthood**

Perry Preschool Study

Ypsilanti, MI

Served children ages 3-4

Weekday morning preschool,
weekly home visits & monthly
parent groups

Age 27: Participants **less
likely to have a birth outside
of marriage**



Primary Pregnancy Prevention

Adolescent Pregnancy Prevention Program	Personal Responsibility Education Program	Project REACH
Teen Outreach Program®	Teen Outreach Program®	
Making Proud Choices	Making Proud Choices	Making Proud Choices
Reducing the Risk		Reducing the Risk
Draw the Line/Respect the Line		Draw the Line/Respect the Line
Wise Guys		
Smart Girls		
Teen PEP		
Becoming a Responsible Teen		

Key topics: youth development: including healthy relationships, communication, influence, goal-setting, decision making, values clarification

