

SREB

# Early Childhood Commission

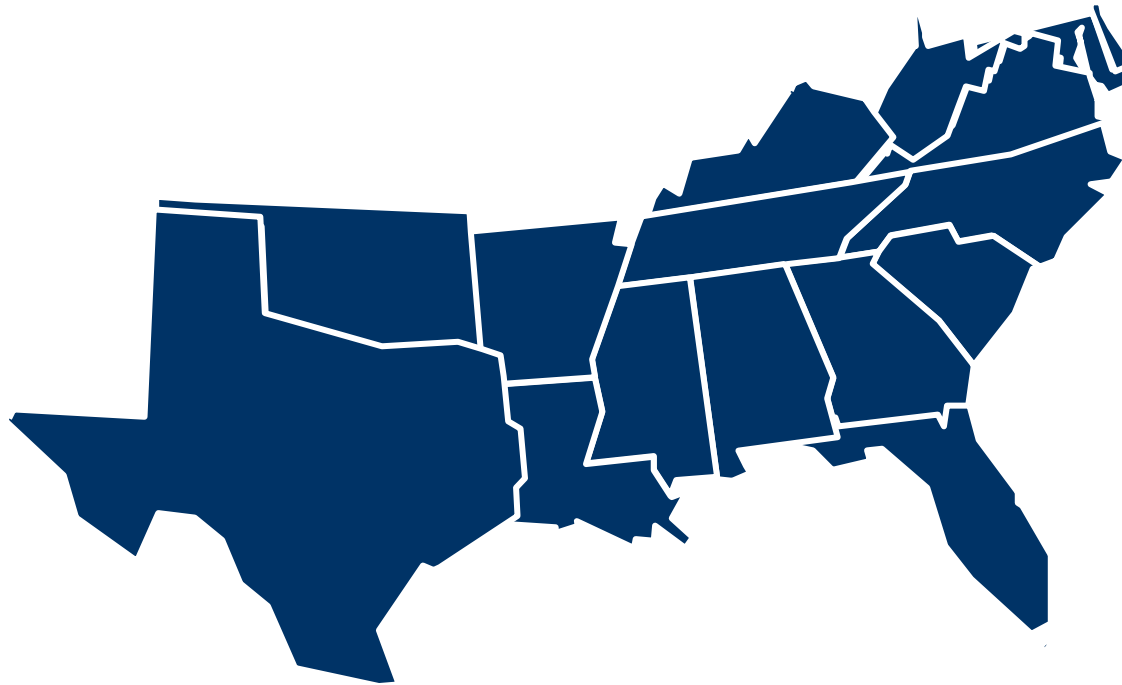
Joan Lord  
Vice President  
Education Data, Policy  
Research and Programs



North Carolina House Select Committee  
On Education Strategy and Practices  
Raleigh, North Carolina  
February 24, 2016

# SREB States

- ❖ Oldest of four education compacts in the nation
  - ❖ NEBHE, MHEC, WICHE



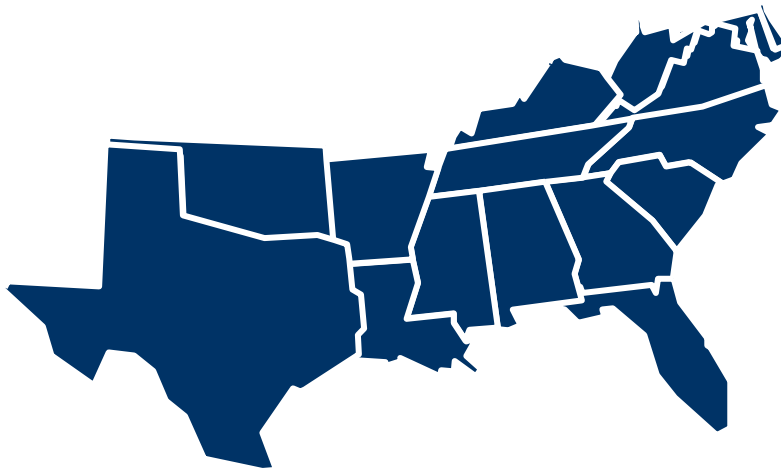
AL, AR, DE, FL, GA, KY, LA, MD,  
MS, NC, OK, SC, TN, TX, VA, WV

***It is my conviction that the South presents right now the nation's No. 1 economic problem.***

***President Franklin D. Roosevelt***

*Conference on Economic Conditions of the South*

*July 4, 1938*



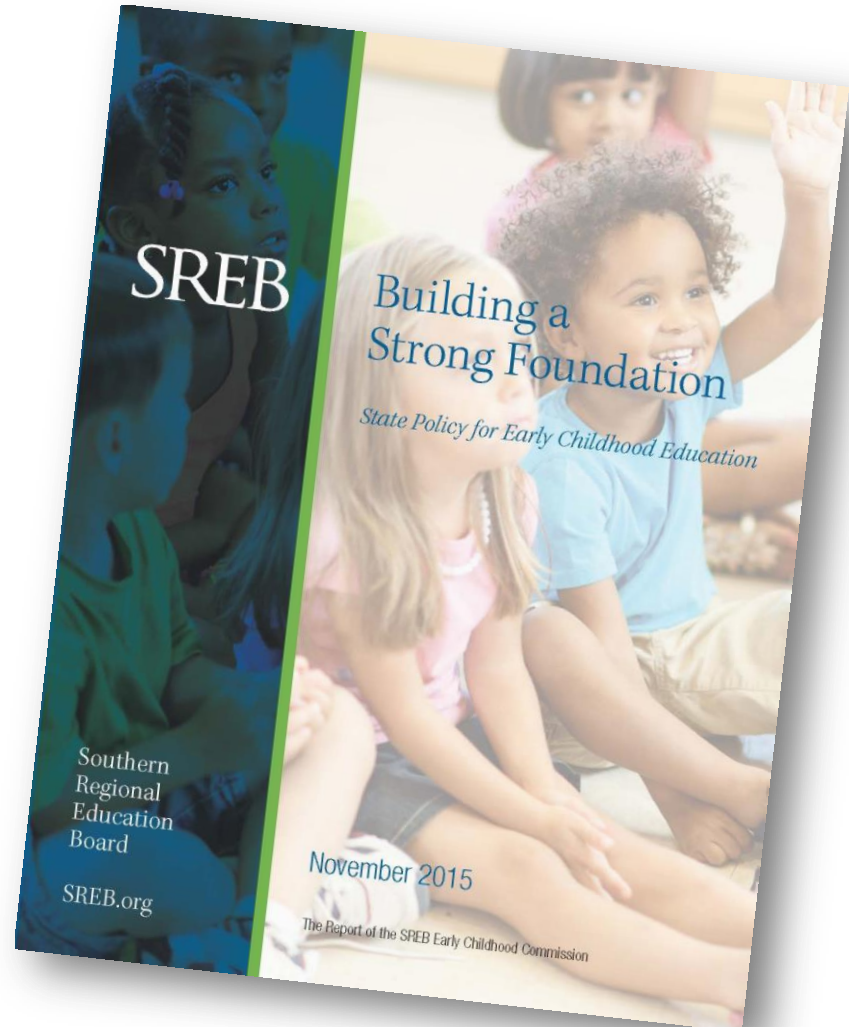
- Recognizing the vital link between education and economic vitality
- Focusing on issues that can improve the quality of life through education
- Serving pre- K through graduate education

**Founded in 1948**

# SREB's Early Childhood Commission 2014-2015



**Chaired by  
Governor Steve Beshear  
of Kentucky**



# The Commission's Charge

The recommend policies for SREB states that would give more young children a solid start when they start school.

- Linked to an SREB goal
- Resulted from research breaks
- Arose from “pushback”

# The Experts



Craig Ramey



Bob Pianta



Terry Tolan



Debi Mathias

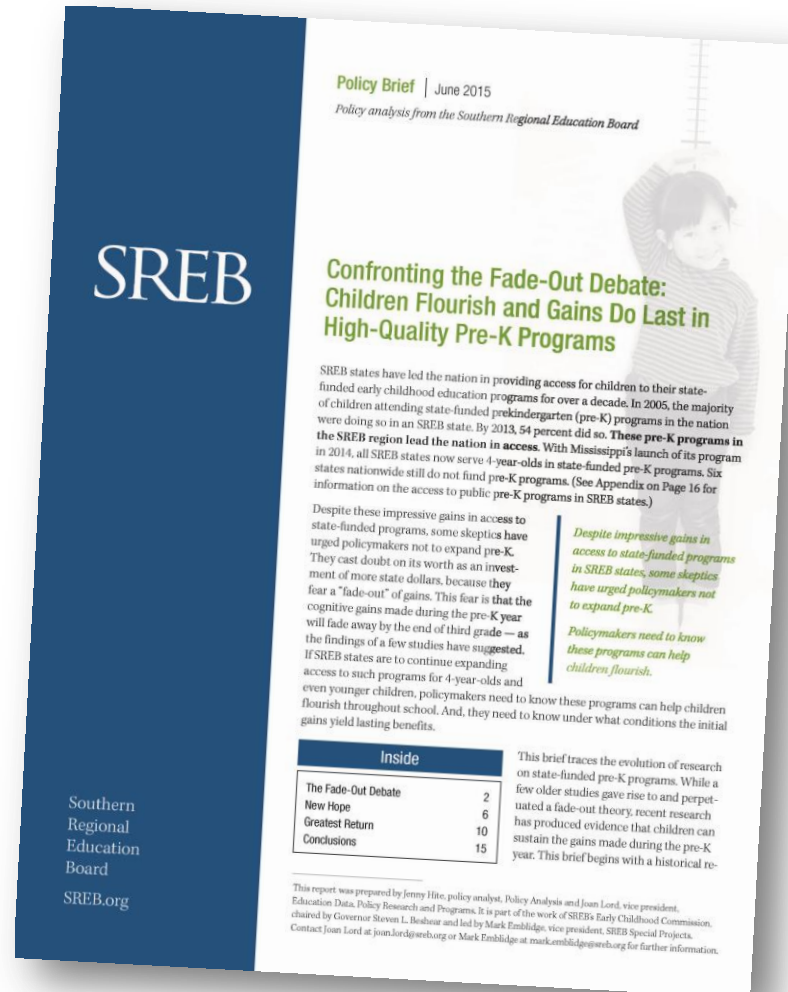


Sharon Darling

**Early  
Childhood  
Commission  
SREB**

# Key SREB Commission Report:

What  
Research  
says on  
fade-out



**Confronting the  
Fade-Out Debate:  
Children Flourish  
and Gains Do  
Last in High  
Quality Pre-K  
Programs**



[About SREB](#)
[SREB Programs](#)
[Quick Links for:](#)
[Policymakers](#)
[Educators](#)
[Parents & Students](#)

### SREB Programs

- Advanced Career
- College and Career Readiness
- College Completion, Affordability
- Benchmarking Readiness Standards
- College and Career Counseling
- CTE Commission
- Doctoral Scholars
- Education Data
- Early Childhood**
  - Members
  - Critical Early Learning
- Educational Technology
- Educator Effectiveness
- Go Alliance
- High Schools That Work
- Legislative Action
- Literacy Math Design Collaborative
- Making Middle Grades Work
- NRCCTE
- Nursing Education
- Policy Analysis
- School Leadership
- Readiness Courses
- Student Access Programs
- Technology Centers That Work

## Early Childhood Education

### Every child deserves a good start in life and in school.

The SREB Early Childhood Commission is convening leaders from 16 states to recommend policies that will give more young children a solid start when they enter school. The Commission's focus is on access to high-quality programs and the importance of highly skilled teachers to young children's learning experiences.

Kentucky Governor Steve Beshear chairs the Commission. Members include legislators, heads of state school agencies and other advocates for early childhood education. The Commission will meet through spring 2015 and draft recommendations for the SREB Board to consider in summer 2015.

"Every child deserves a good start in life and in school," said Governor Beshear. "Early learning experiences have lifelong effects on a child's opportunities to succeed. The importance of getting our youngest learners off to the best start possible cannot be overstated."

[Commission members >](#)

[Birth to Books: The Critical Infrastructure of Early Learning >](#)

#### Presentations to the Commission

Elevating the Capacity of Classroom Experiences for Promoting Students' Learning and Development  
*Robert C. Pianta*

Early Childhood Program Quality  
*Debi Mathias*

Improving Educational and Economic Achievement With Targeted Early Childhood Education  
*Craig T. Ramey*

Importance of Family Support in the Early Years  
*Sharon Darling*

Birth to Books: A Comprehensive Policy Approach  
*Terry Tolan*

### Recommended Reading

Confronting the Fade-Out Debate: Children Flourish and Gains Do Last in High-Quality Pre-K Programs

Early Childhood Commission Glossary

Pre-K Benefits: The Facts on Fade-out

Press release: Early Childhood Commission Focuses on Quality Programs, Testing

Early Learning: Program Quality in Early Childhood Education  
SREB Annotated Bibliography, 2014

Early Learning: Birth to Third Grade Continuum  
SREB Annotated Bibliography, 2014

Early Learning: Return on Investment  
SREB Annotated Bibliography, 2014

Beyond Subprime Learning: Accelerating Progress in Early Education  
New America Education Policy Program, 2014

Early Learning: The New Fact Base and Cost Sustainability  
Jim Minervino, Ready On Day One, and Robert Pianta, University of Virginia 2013

Initiatives from Preschool to Third Grade: A Policymakers Guide  
Education Commission of the States, 2014

SREB Challenge to Lead 2020 Goals for Education, 2012

### FOR INFORMATION, CONTACT:

Mark Embildge  
Vice President, Special Projects  
404-875-9211

© 1999-2015 Southern Regional Education Board. All rights reserved.

[Terms and Conditions](#) | [Site Map](#) | [Contact SREB](#) | [SREB Privacy Policy](#)

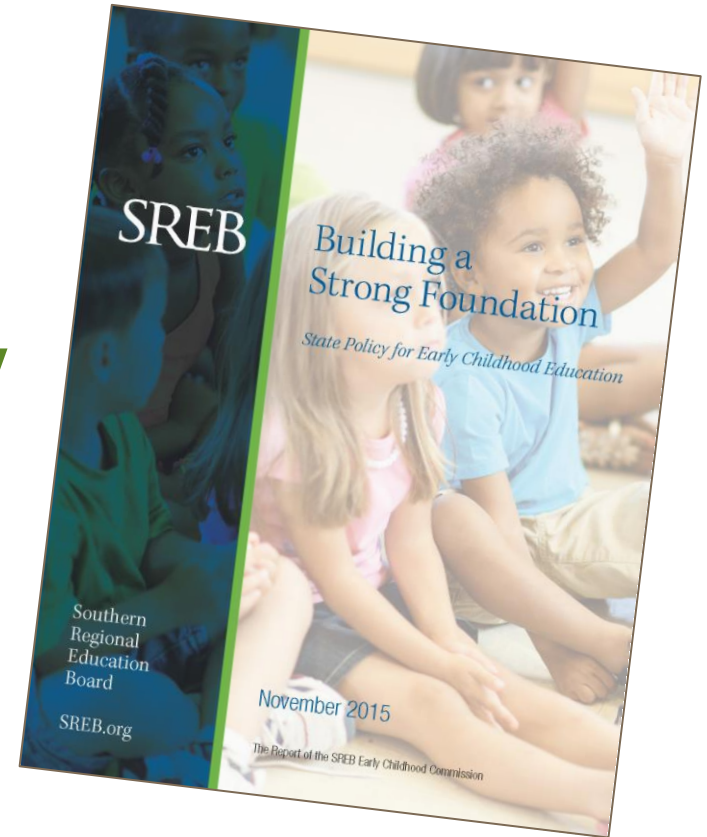
Go to  
[www.sreb.org/earlychildhood](http://www.sreb.org/earlychildhood)



# Commission Considerations

## Five Key Issues

- Program Quality
- Teacher Quality
- Accountability
- Access
- Governance



**Early  
Childhood  
Commission**

# Program Quality

- Develop program and practice standards – and learning guides
- Align standards, especially pre-K to grade 3
- Coordinate funding to promote high quality programs
- Promote effective, appropriate curricula
- Establish improvement initiatives, like QRIS



Early  
Childhood  
Commission

# Teacher Quality

- Ensure pre-service programs provide opportunities for future teachers to develop needed specialized competencies
- Review and improve licensing and professional development requirements
- Ensure access to high quality professional development



**Early  
Childhood  
Commission**

# Accountability

- **Assessment systems and strategies**
- **Expectations and targets to report outcomes**
- **Performance-based finance policies**
- **Alignment, vertical and horizontal, for standards, curricula and assessment**
- **Funding policies based on analysis of all sources**
- **Track data systematically**
- **Use data analytics for cross-agency studies**
- **Conduct cost-benefit analyses**



**Early  
Childhood  
Commission**



# Access

Early  
Childhood  
Commission

- Identify risk factors for state's children
- Devise early-warnings to ID who can benefit
- Set high goals on serving at-risk children
- Set eligibility priorities
- Determine geographic and socioeconomic spread of programs



# Governance

- Policy and fiscal framework *for birth through age 8*
- State cabinet or coordinating council
- Comprehensive budget analysis
- Recognition as strategic element in economic and cultural development



**Early  
Childhood  
Commission**



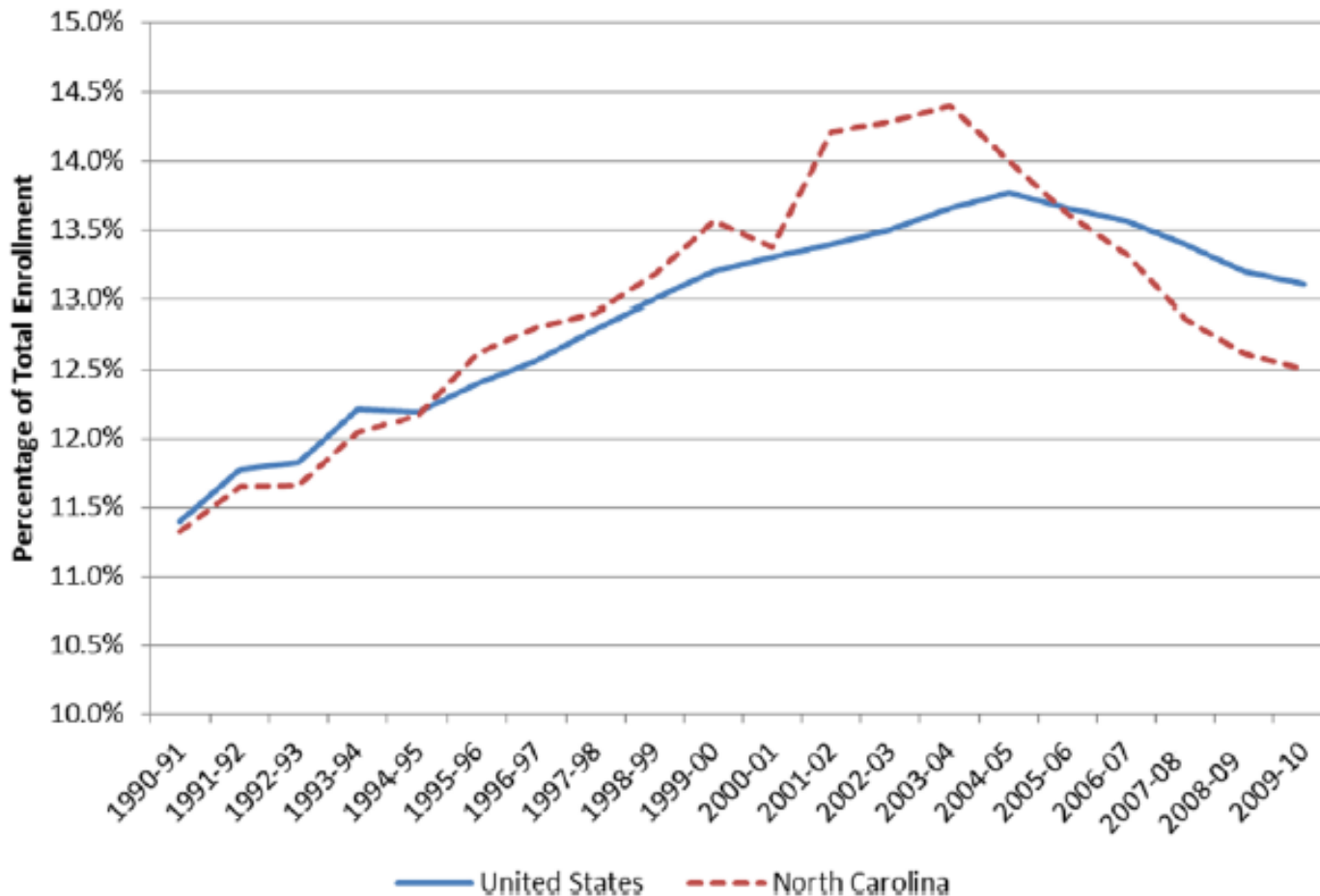
# North Carolina's More at Four (NC Pre-K)



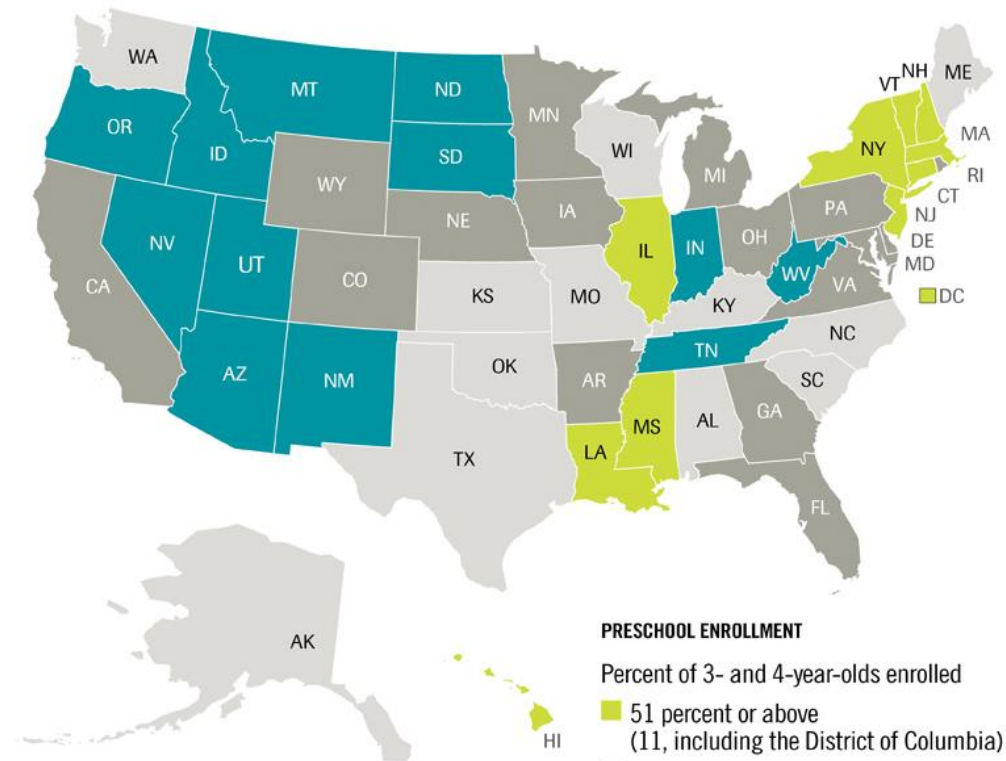
- **Emphasis on Process Quality**
  - National leader in NIEER benchmarks
  - National leader in statewide QRIS system
  - Continuous evaluation
- **Emphasis on Teacher Quality**
  - BA required
  - Birth-through-K credentials required
- **Alignment**
  - P-3 office; supports “First School” initiative for K through third grade children at risk
  - NC’s early learning standards, spanning birth to age 5, aligned with K-3 standards
  - The Office of Early Learning -- developing an aligned system of formative assessments

# NC Pre-K Outcomes

Number of individuals served under IDEA  
As percentage of total enrollment: ages 3 to 21



# North Carolina's More at Four (NC Pre-K)



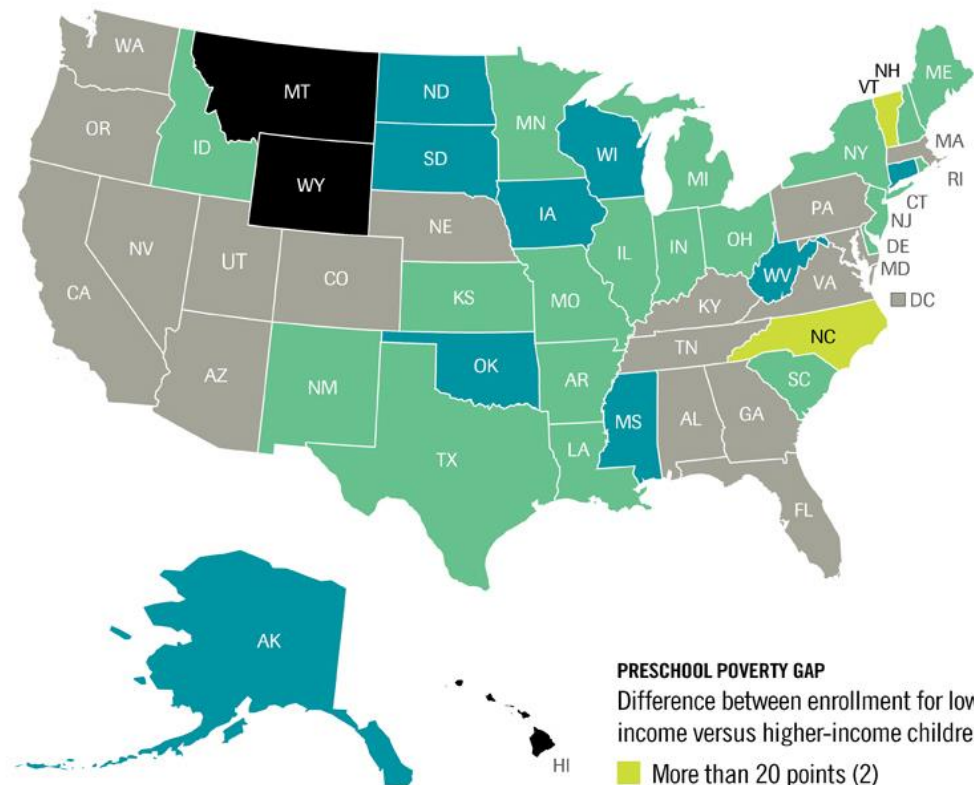
## PRESCHOOL ENROLLMENT

Percent of 3- and 4-year-olds enrolled

- 51 percent or above (11, including the District of Columbia)
- 46-50 percent (16)
- 41-45 percent (12)
- 40 percent or below (12)

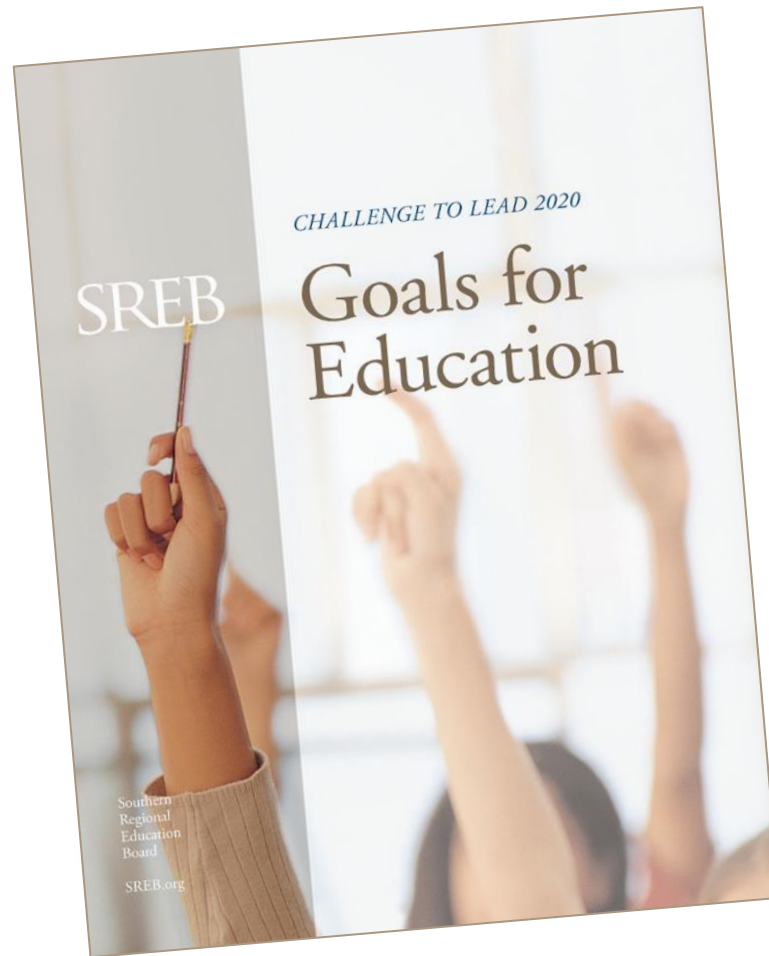
SOURCE: Education Week Research Center, 2015

# North Carolina's More at Four (NC Pre-K)



# SREB Annual Meeting







SREB

# Early Childhood Commission



## Discussion