

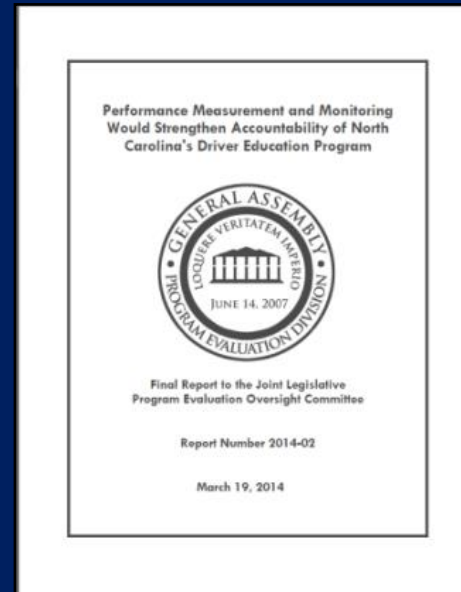
Recommendations

Performance Measurement and Monitoring Would Strengthen Accountability of North Carolina's Driver Education Program

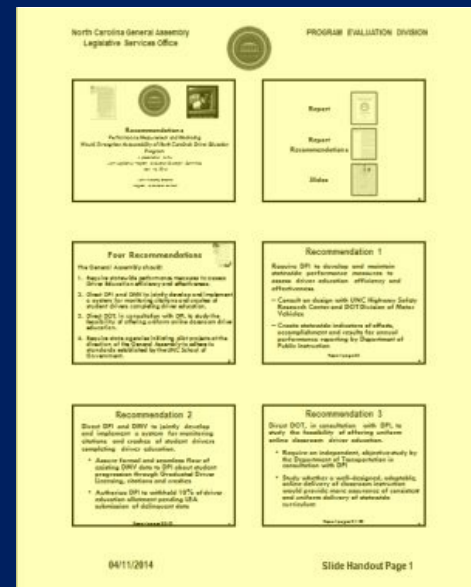
A presentation to the
House Select Committee on Education Strategy and Practices
April 13, 2015

John Turcotte, Director
Program Evaluation Division

Report (Recommendations pp. 30-34)



Slides



Four Recommendations

pp. 30-34

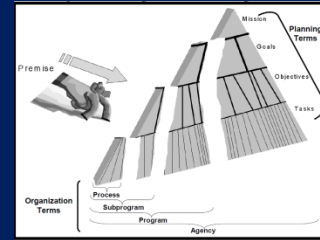
The General Assembly should:

1. Require statewide performance measures to assess Driver Education efficiency and effectiveness.
2. Direct DPI and DMV to jointly develop and implement a system for monitoring citations and crashes of student drivers completing driver education.
3. Direct DOT, in consultation with DPI, to study the feasibility of offering uniform online classroom driver education.
4. Require state agencies initiating pilot projects at the direction of the General Assembly to adhere to standards established by the UNC School of Government.



Recommendation 1

Require DPI to develop and maintain statewide performance measures to assess driver education efficiency and effectiveness.

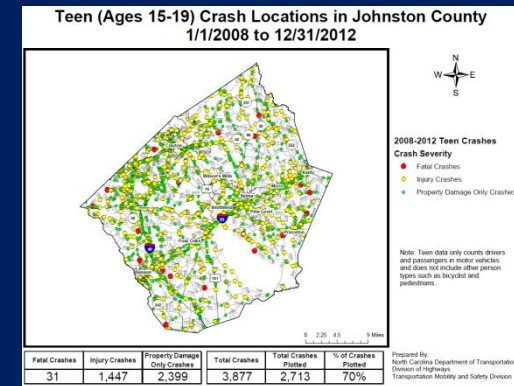


- Consult on design with UNC Highway Safety Research Center and DOT's Division of Motor Vehicles
- For annual performance reporting by Department of Public Instruction, create statewide indicators of effort, accomplishments and results

Recommendation 2

Direct DPI and DMV to jointly develop and implement a system for monitoring citations and crashes of student drivers completing driver education.

- Monitor students as they progress through phases of Graduated Driver Licensing
- Authorize DPI to withhold 10% of driver education allotment pending LEA submission of delinquent data



Recommendation 3



Direct DOT, in consultation with DPI, to study the feasibility of offering uniform online classroom driver education.

Report pages 31-33

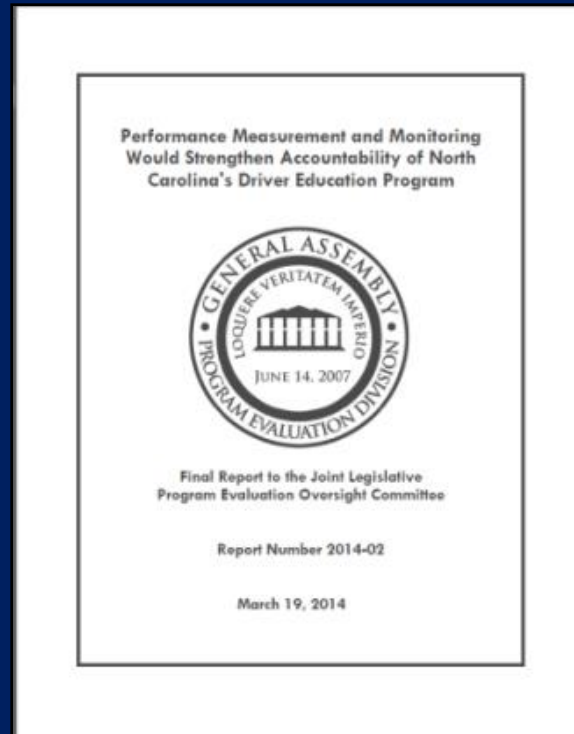
Recommendation 4



Require state agencies initiating pilot projects at the direction of the General Assembly to adhere to standards established by the UNC School of Government

- Standards would not apply to any other pilot conducted by an agency or university if that pilot was not conducted at the direction of the General Assembly (e.g. agricultural research projects, university research and experiments)

**Report available online at
www.ncleg.net/PED/Reports/reports.html**



John.Turcotte@ncleg.net