

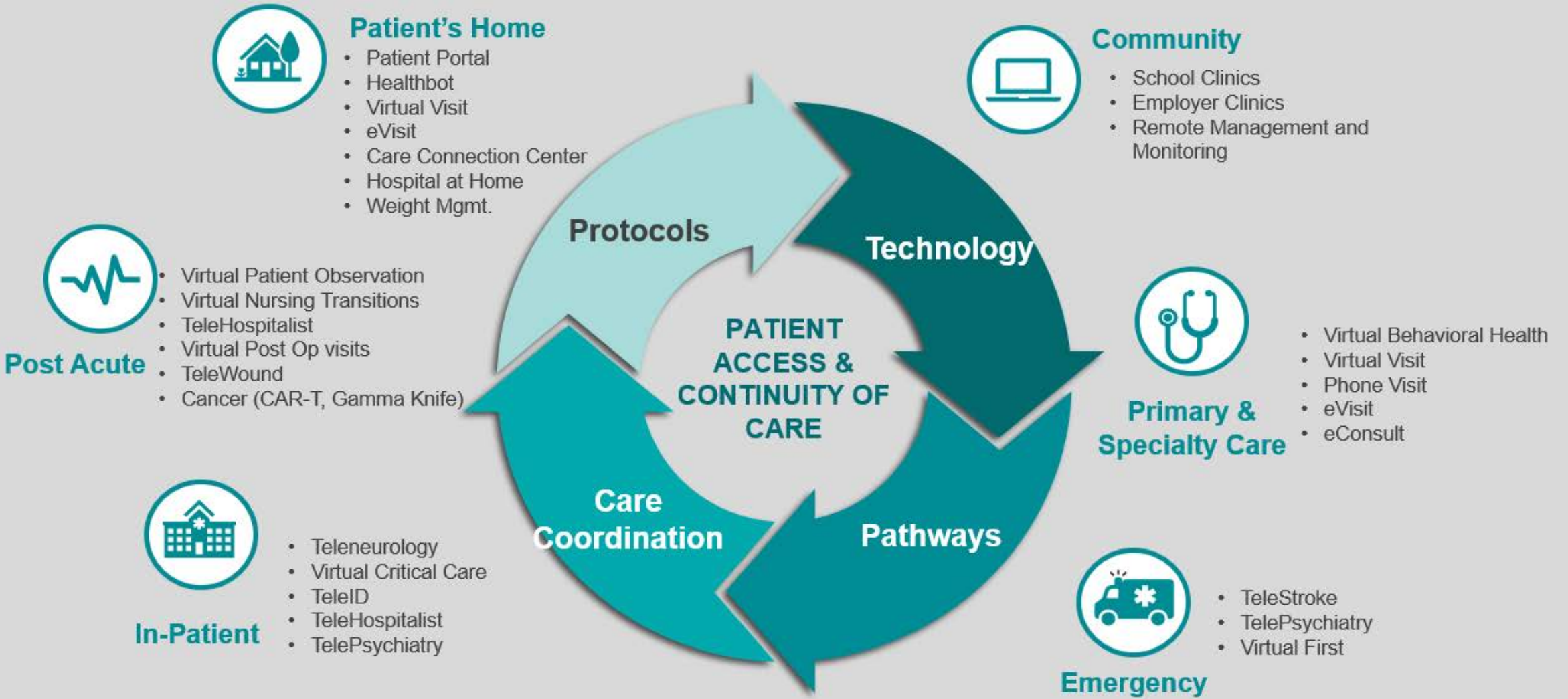


Atrium Health

Atrium Health Virtual Health

Telling Our Story

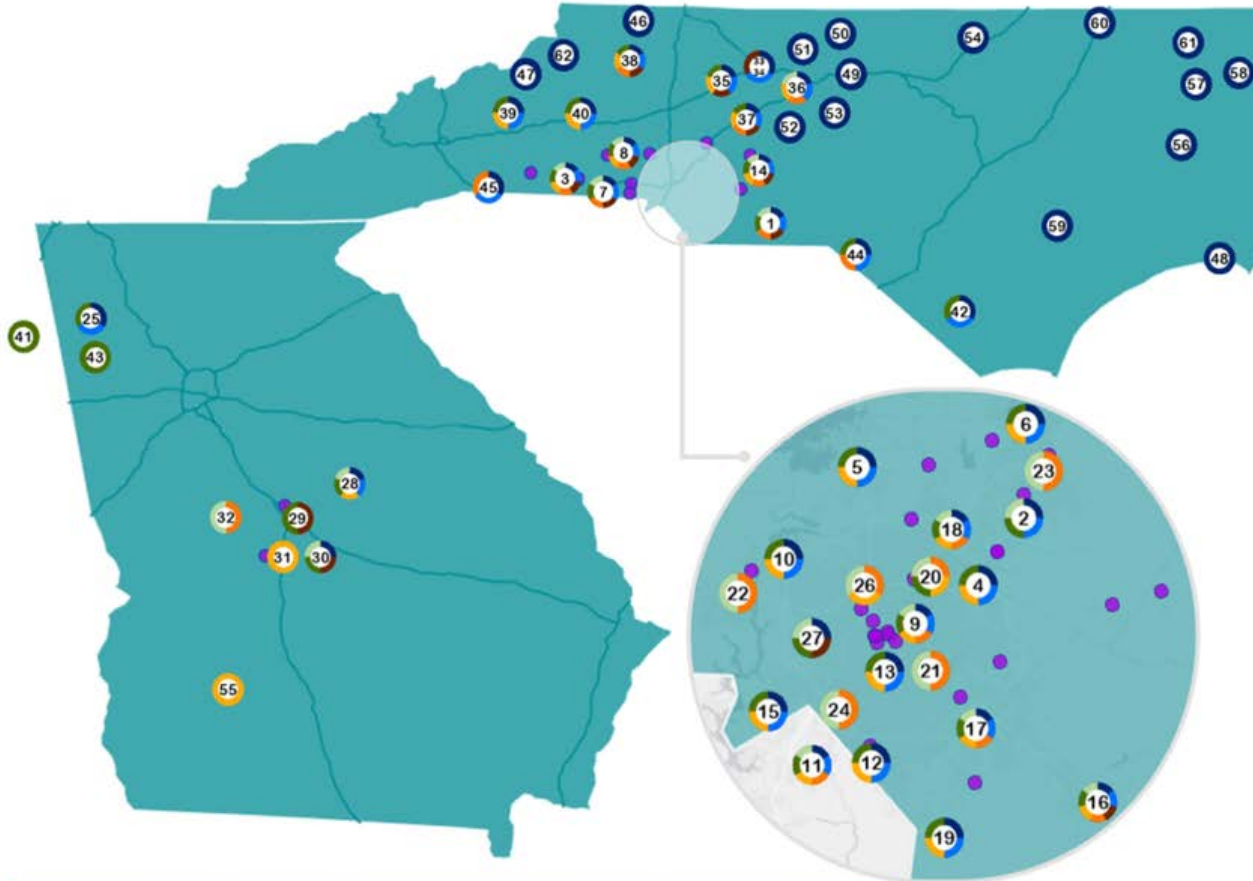
Patient-Centered Virtual Care Continuum



Our Virtual Reach: Size & Scale



Atrium Health Enterprise Hospitals Virtual Services and Behavioral Health Practices



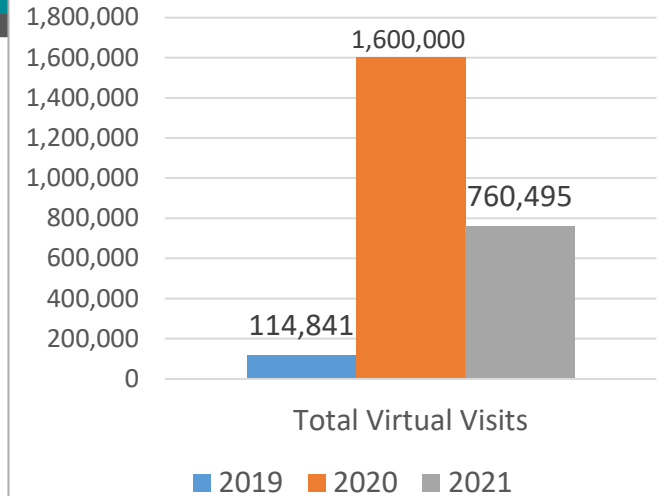
Virtual Services Offered

- Stroke
- Hospitalist
- VPO
- Neurology
- Critical Care
- Practice with Behavioral Health Integration
- Infectious Disease
- Psychiatry

CONFIDENTIAL - This document contains competitive healthcare information pursuant to N.C. Gen. Stat. §31-97.3 and is not a public record.

- | PRIMARY | |
|------------|--|
| 1 | AH Anson |
| 2 | AH Cabarrus |
| 3 | AH Cleveland |
| 4 | AH Harrisburg |
| 5 | AH Huntersville |
| 6 | AH Kannapolis |
| 7 | AH Kings Mountain |
| 8 | AH Lincoln |
| 9 | AH Mercy |
| 10 | AH Mountain Island |
| 11 | AH Pineville |
| 12 | AH Providence |
| 13 | AH Southpark |
| 14 | AH Stanly |
| 15 | AH Steele Creek |
| 16 | AH Union |
| 17 | AH Union West |
| 18 | AH University |
| 19 | AH Waxhaw |
| 20 | Carolinas |
| 21 | Carolinas Rehabilitation |
| 22 | Carolinas Rehabilitation Mount Holly |
| 23 | Carolinas Rehabilitation Northeast |
| 24 | Carolinas Rehabilitation Pineville |
| 25 | Floyd |
| 26 | Jeff Gordon Childrens |
| 27 | Levine Childrens Hospital |
| 28 | Navicent Baldwin |
| 29 | Navicent Health Childrens Hospital |
| 30 | Navicent Macon |
| 31 | Navicent Peach |
| 32 | Rehabilitation Hospital Navicent Health |
| 33 | Wake Forest Baptist |
| 34 | Wake Forest Baptist Health - Brenner Childrens |
| 35 | Wake Forest Baptist Health - Davie |
| 36 | Wake Forest Baptist Health - High Point |
| 37 | Wake Forest Baptist Health - Lexington |
| 38 | Wake Forest Baptist Health - Wilkes |
| REGIONAL | |
| 39 | Blue Ridge Regional Hospital |
| 40 | Blue Ridge Valdese |
| 41 | Cherokee |
| 42 | Columbus Regional |
| 43 | Polk |
| 44 | Scotland |
| 45 | St Lukes |
| AFFILIATED | |
| 46 | Alleghany Health |
| 47 | Cannon Memorial |
| 48 | Carteret Health Care |
| 49 | Cone Health Alamance Regional |
| 50 | Cone Health Annie Penn |
| 51 | Cone Health Greensboro Drawbridge Pkwy |
| 52 | Cone Health High Point |
| 53 | Cone Health Wesley Long |
| 54 | Granville Health System |
| 55 | Phoebe Putney Memorial Hospital |
| 56 | Vidant Beaufort |
| 57 | Vidant Bertie |
| 58 | Vidant Chowan |
| 59 | Vidant Duplin |
| 60 | Vidant North |
| 61 | Vidant Roanoke-Chowan |
| 62 | Watauga Medical Center |

Ambulatory Virtual Visits 2019-2021



Serving Communities with healthcare disparities and lack of access to care.

Rural impact:

- 212,000 ambulatory virtual visits (35% of 2021 total virtual volume) was in Rural Counties (CMS defined).
- Over 50% of virtual behavioral health clinics are in Rural Communities.

Community Clinics: No show rates declined from 20% to 8% with introduction of virtual health (patients in underserved communities, medically complex)



Program Spotlight

Hospital at Home

- >4,400 Total Patients (since Jan 2021)
- >18,000 Brick & Mortar Bed Days Saved
- Target Census: 32
- Peak census: 130 (Jan 2021)

- Quality Measures (*Readmissions, Mortality, LOS, etc.*) same or better than Brick & Mortar
- Patient Experience scores higher than Brick & Mortar

School Based Virtual Care

- Total Virtual Visits: 5,198 (3,175 unique patients treated)
- 56 Schools Served

- Patients treated have 34% fewer avoidable ED visits.
- 34% of students/43% of staff can return to class and continue their school/workday.
- In 2021, expanded to include school based mental health teletherapy.

Virtual Behavioral Health Integration (vBHI)

- 50% of vBHI clinics operate in rural communities.
- > 22K unique pt in 2019, >120K encounters

- Depression: 55% of patients had 50% reduction in PHQ-9 score
- Anxiety: 62.7% of patients had 50% reduction in GAD-7 score.