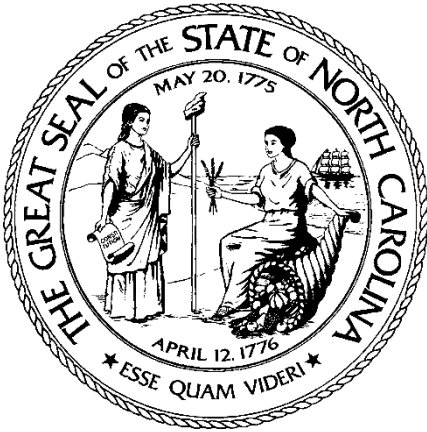


**JOINT LEGISLATIVE COMMITTEE  
ON MEDICAID AND NC HEALTH CHOICE**



# **Medicaid Enrollment**

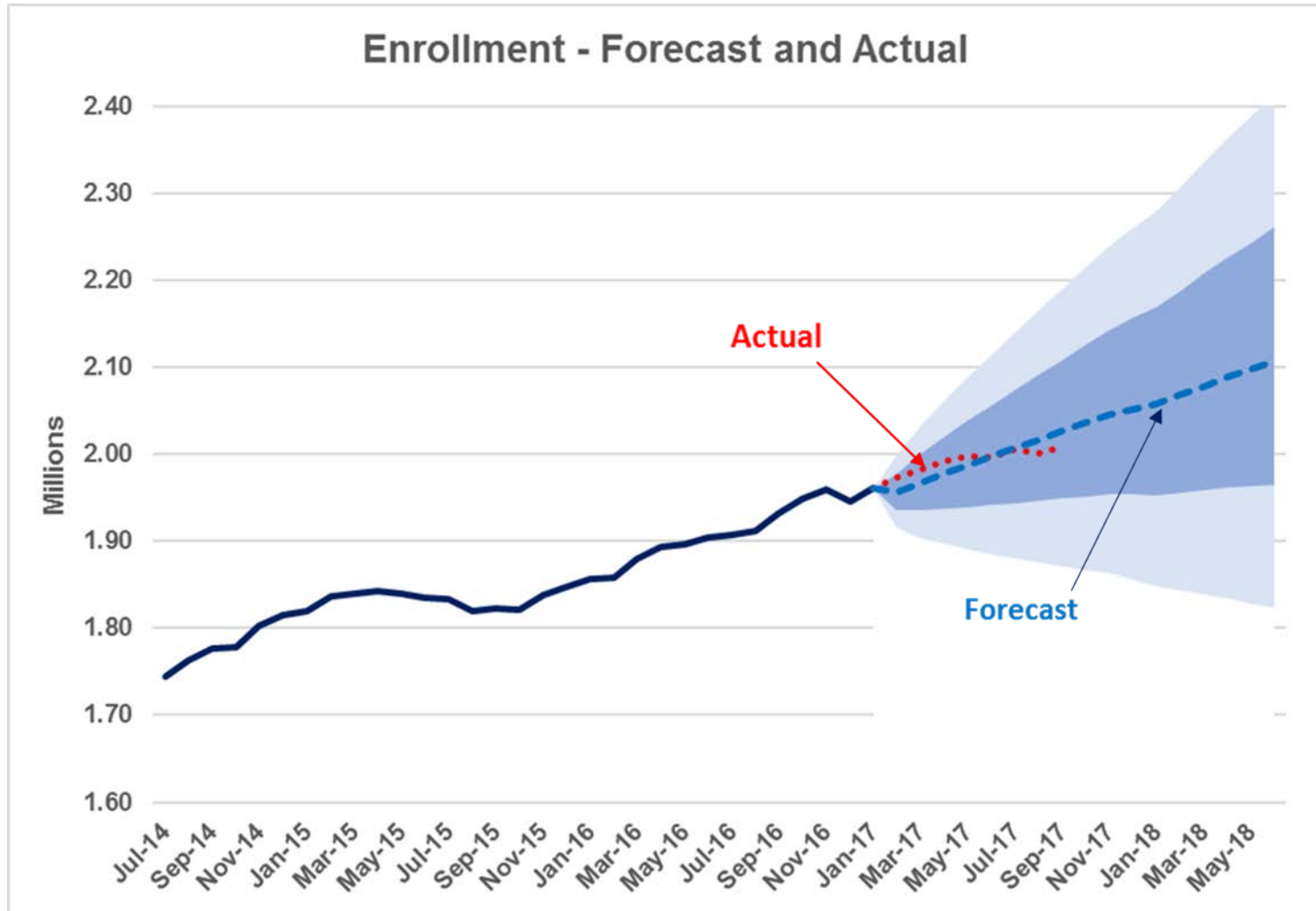
**Dave Richard**

**Deputy Secretary for Medical Assistance**

**Oct. 10, 2017**

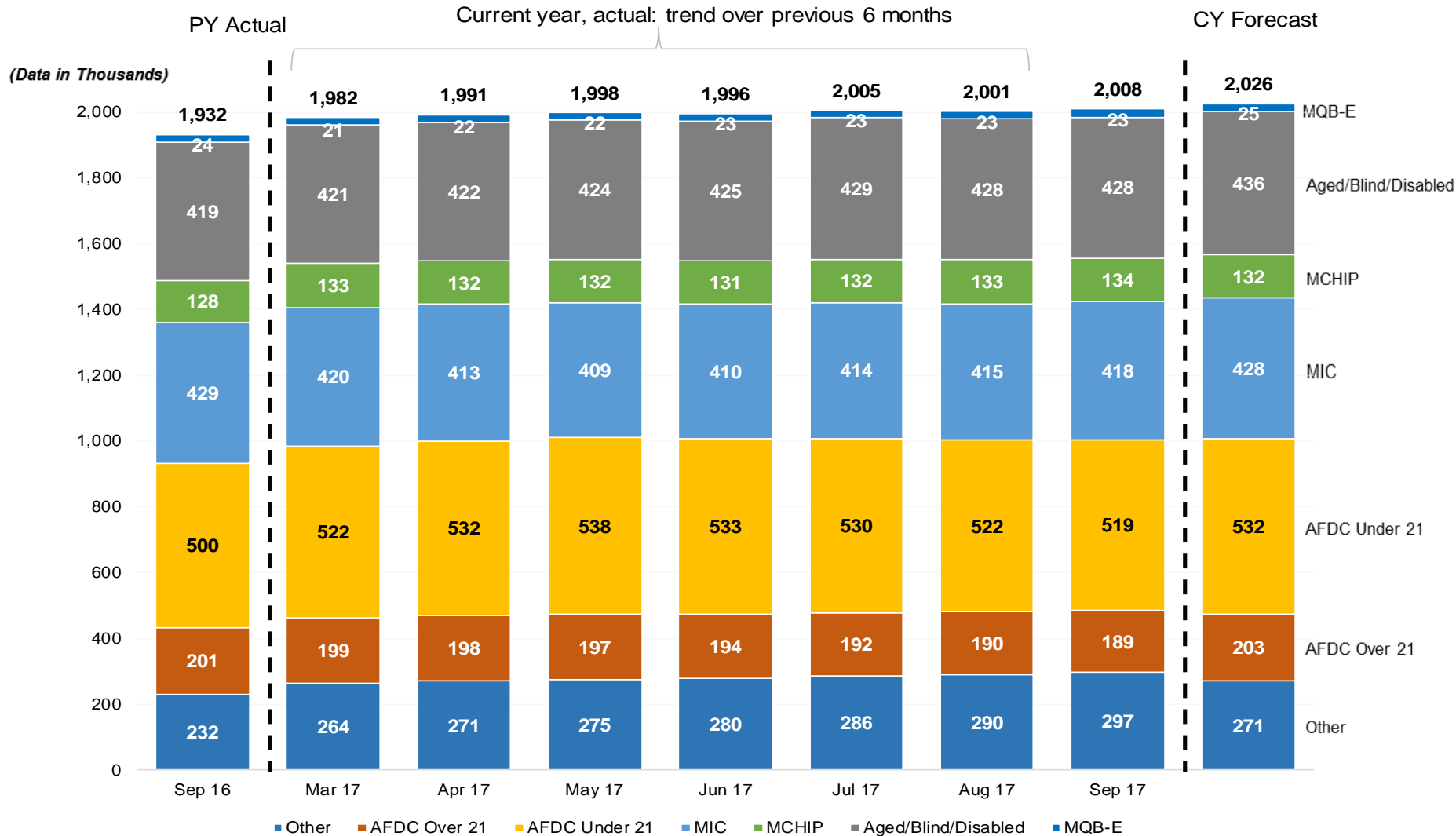
# Medicaid Enrollment – Forecast vs. Actual

Medicaid enrollment has tracked roughly in line with DMA's expectations to date



# Medicaid Enrollment by Program Aid Category

Enrollment year-over-year is 4% higher – Sept. 2017: 2.008M; Sept. 2016: 1.932M



# Enrollment Dashboards – DMA Website

[Home](#)
[Contact](#)
[Medicaid](#)
[Get Involved](#)
[Find A Doctor](#)
[Providers](#)
[Documents](#)
[Reports](#)

## North Carolina Medicaid and Health Choice Enrollment

By County and Program Aid Category (PAC)

### Navigation Guide:

Click on a county on the map to see that county's PAC enrollment in table.

Click on county again to clear the selection.

Select a PAC in the table to see distribution on state map and county rankings.

Click on PAC again to clear selection.

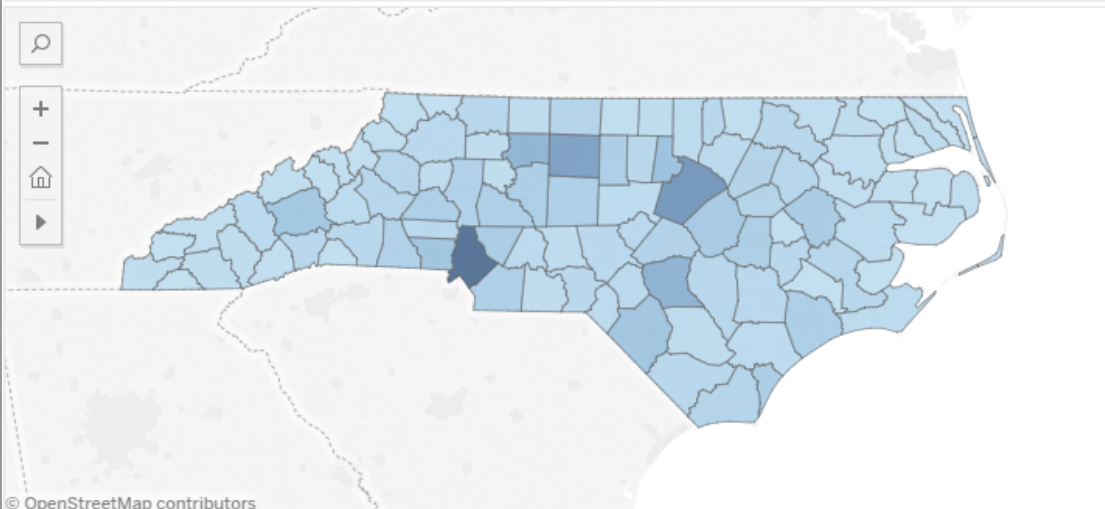
### Select Date



### Select Plan

### County Enrollment - \* PAC

September - 2017



© OpenStreetMap contributors

976

210,949

### PAC Enrollment - All

September - 2017

	Enrollment	% of Total
TANF (AFDC) 20 and Under	519,223	24.7%
Infants And Children	418,302	19.9%
Disabled	300,312	14.3%
Family Planning	201,183	9.6%
TANF (AFDC) 21 And Over	188,639	9.0%
MCHIP	133,862	6.4%
Aged	126,178	6.0%
MQBB	41,914	2.0%
MQBE	23,495	1.1%
Documented Aliens	19,781	0.9%
Pregnant Women	18,935	0.9%
MQBQ	8,145	0.4%
Other Child	6,138	0.3%
Blind	1,648	0.1%
BCC	450	0.0%
Refugees	247	0.0%
Undocumented Aliens	86	0.0%
<b>Total</b>	<b>2,008,538</b>	<b>95.6%</b>
Chip	92,500	4.4%
Chip Extended Coverage		
<b>Total</b>	<b>92,500</b>	<b>4.4%</b>
<b>Grand Total</b>	<b>2,101,038</b>	<b>100.0%</b>