



**NORTH CAROLINA**  
State Board of Education  
Department of Public Instruction

---

# Report to the North Carolina General Assembly

Low-Performing Districts and  
Schools, Improvement Planning,  
and Statewide Support

---

*HB 2436 (Sec.7.3a-7.3b)*

*SL 2007-323.Sec.7.18(b)*

*HB 1473, 2007*

*Budget Act G.S. 115C-12(25)*

**Date Due: ---**

November 15, 2023

DPI Chronological Schedule, 2022-2023

Reporting on the 2022-2023 School Year

## STATE BOARD OF EDUCATION

STATE BOARD OF EDUCATION VISION: Every public school student in North Carolina will be empowered to accept academic challenges, prepared to pursue their chosen path after graduating high school, and encouraged to become lifelong learners with the capacity to engage in a globally-collaborative society.

STATE BOARD OF EDUCATION MISSION: The mission of the North Carolina State Board of Education is to use its constitutional authority to guard and maintain the right of a sound, basic education for every child in North Carolina Public Schools.

**ERIC DAVIS**

Chair: Charlotte – At-Large

**JILL CAMNITZ**

Greenville – Northeast Region

**JOHN BLACKBURN**

Linville – Northwest Region

**ALAN DUNCAN**

Vice Chair: Greensboro – Piedmont-Triad Region

**REGINALD KENAN**

Rose Hill – Southeast Region

**DONNA TIPTON-ROGERS**

Brasstown – Western Region

**MARK ROBINSON**

Lieutenant Governor: High Point – Ex Officio

**VACANT**

North Central Region

**J. WENDELL HALL**

Ahoskie – At-Large

**DALE FOLWELL**

State Treasurer: Raleigh – Ex Officio

**OLIVIA OXENDINE**

Pinehurst – Sandhills Region

**CATTY MOORE**

Monroe – At-Large

**CATHERINE TRUITT**

Superintendent & Secretary to the Board: Cary

**VACANT**

Southwest Region

The above State Board of Education information is a record of the board members at the time of this document's approval for publication.

For the current list of State Board Members, Vision and Mission Statements, go to [www.dpi.nc.gov/about-dpi/state-board-education](http://www.dpi.nc.gov/about-dpi/state-board-education).

## NC DEPARTMENT OF PUBLIC INSTRUCTION

**Catherine Truitt, State Superintendent / 301 N. Wilmington Street / Raleigh, North Carolina 27601-2825**

In compliance with federal law, the NC Department of Public Instruction administers all state-operated educational programs, employment activities and admissions without discrimination because of race, religion, national or ethnic origin, color, age, military service, disability, or gender, except where exemption is appropriate and allowed by law.

**Inquiries or complaints regarding discrimination issues should be directed to:**

Thomas Tomberlin, Senior Director, Educator Preparation, Licensure, and Performance, NCDPI  
6301 Mail Service Center, Raleigh, NC 27699-6301 / Phone: (984) 236-2114 / Fax: (984) 236-2099

Visit us on the Web: [www.dpi.nc.gov](http://www.dpi.nc.gov)

1023

# **Committee on Low-Performing Districts and Schools, Improvement Planning, and Statewide Support**

---

## **Executive Summary**

G. S. §115C-12(25) requires the State Board of Education to submit a report to the Joint Legislative Education Oversight Committee (JLEOC) annually regarding districts and schools identified as low-performing, effective improvement planning, and recommendations for additional legislation to improve student performance and increase local flexibility.

This report contains information regarding the implementation of G. S. §115C-105.37; Identification of low-performing schools; G. S. §115C-105.37B Reform of continually low performing schools; and G. S. §115C-105.39A Identification of low-performing local school administrative units. Specifically, the report provides a summary about the results of the steps and process developed and implemented by the North Carolina Department of Public Instruction to support those districts and schools identified as low performing based on the 2021-2022 performance results. Additionally, the report includes the plans for reviewing and providing feedback on the improvement plans based on the results and appendices with the resources, documents, and calendar of events to be provided to districts and schools across the state with low-performing schools.

## Table of Contents

### Table of Contents

<b>Executive Summary .....</b>	<b>3</b>
<b>Overview of Legislation and District/School Data .....</b>	<b>5</b>
Legislation.....	5
Execution of Legislation .....	7
Trends and Patterns from Low-Performing Plans .....	7
Strategic Reform Services: School Reform Models .....	8
<b>Low-Performing Districts and Schools .....</b>	<b>12</b>
<b>Overview of North Carolina Department of Public Instruction Support .....</b>	<b>14</b>
Office of District & Regional Support.....	14
Diagnostic Services: Comprehensive Needs Assessments and Follow-Up Support.....	14
CARES: An Intensive Intervention Coaching Pilot.....	15
<b>Appendix.....</b>	<b>19</b>
2022 Registration Information Low Performing Webinars.....	20
2022 Timeline for Submission of School Improvement Plans.....	21
2022-2023 Low-Performing Schools List .....	22
2022-2023 Low-Performing Districts .....	41
2022-2023 Recurring Low Performing Schools List .....	42
2022-2023 Continually Low Performing Charter Schools List.....	59
2022-2023 CARES Intensive Intervention Pilot .....	61

## Overview of Legislation and District/School Data

The following report provides a summary of legislation about the definition of low-performing schools and low-performing local school administrative units. In addition, the report provides a general analysis of trends and patterns identified in the plans submitted to the Department of Public Instruction for feedback. Also included in the report are the results of performance and growth data for low-performing districts and schools based on the analysis of School Performance Grades (SPG) from the 2022-2023 year. The report specifically presents the following information and data:

1. Summary of the legislation concerning low-performing districts and schools,
2. Summary of findings based on the 2022-2023 submitted Low-Performing Local School Administrative Units' and Schools' improvement plans,
3. Summary analysis of 2022-2023 Accountability results, and
4. Overview of the projected timeline and process for the 2023-2024 improvement plans based on low-performing results.

### *Legislation*

In September 2015, Session Law 2015-241 House Bill 97, provided amended definitions for low-performing schools and a new designation for low-performing districts. Included in both the amended and new designations were specifically defined processes, procedures, and requirements for low-performing schools and districts. The following tables provide summary information regarding the requirements based on current legislation:

**Table 1: September 2015 Statute for Low-Performing Schools and Local School Administrative Units**

General Statute	Explanation
<p><b>§ 115C-105.37.</b>  <b>Identification of low-performing schools</b></p>	<p>Defines low-performing schools as those that receive a school performance grade of <b>D</b> or <b>F</b> <i>and</i> a school growth score of "<b>met expected growth</b>" or "<b>not met expected growth</b>"</p>
<p><b>§ 115C-105.39A.</b>  <b>Identification of low-performing local school administrative units</b></p>	<p>Defines a low-performing school administrative unit as a unit in which the <b>majority</b> of the schools in that unit that earned an overall school performance grade and school growth score identified as <b>low-performing schools</b></p>

**Table 2: Low-Performing Legislative Requirements**

<b>Requirement According to Legislation</b>	<b>Explanation</b>	<b>Timeline/Deadline</b>
Identification	State Board of Education identifies low-performing schools and low performing districts	Annually
<b>Low-Performing Schools</b>		
Principal Decision	Superintendent determines from 4 options employment of the principal of each low-performing school	Within 30 days of low-performing designation
School Plan for Improvement	A preliminary plan (with public input) for improving both the school performance grade and school growth score submitted to the local board	Within 30 days of low-performing designation
Written Notification to Parents	Written notice should contain school’s performance grade and growth score earned, and plan for improvement	Within 30 days of low-performing designation
Local Board Approval	Local Board approves, modifies, or rejects preliminary plan	Within 30 days of receiving the plan
Submit plan to State Board	The plan is submitted to the State Board for recommendations	Within 5 days of local board approval
Feedback regarding the plan	The State Board reads and provides recommendations about the plan	Expediently
Consider feedback	Local board amends the plan as needed and submits final plan to the State Board	After local board final approval
Access to the final plan	The final plan is accessible through local school administrative unit website and the NC Department of Public Instruction’s website	Upon final submission
<b>Low-Performing Local School Administrative Unit</b>		
Principal Decision	Superintendent determines from 4 options employment of the principal of each low-performing school	Within 30 days of low-performing designation
District Plan for Improvement	A preliminary plan (with public input) for improving each schools’ performance grade and school growth score, monitoring each schools’ progress, and administrative unit’s possible policy changes is submitted to the local board	Within 30 days of low-performing designation
Written Notification to Parents	Written notice should be sent to parents of all students attending any school deemed low-performing in the local administrative unit. Notification should define low-performing local school administrative unit, percentage of schools identified, information about individual low-performing school, and plan for improvement	Within 30 days of low-performing designation
Local Board Approval	Local Board approves, modifies, or rejects preliminary plan	Within 30 days of receiving the plan
Submit plan to State Board	The plan is submitted to the State Board for Recommendations	Within 5 days of local board approval

Feedback regarding the plan	The State Board reads and provides recommendations about the plan	Expediently
Consider feedback	Local board amends the plan as needed and submits final plan to the State Board	After local board final approval
Access to the final plan	The final plan is accessible through local school administrative unit website and NC Department of Public Instruction's website	Upon final submission

### *Execution of Legislation*

The Department of Public Instruction provides a series of support services to guide districts and schools through the statutory requirements of a low performing school/district designation. In the month of September 2022, the Department's Office of District & Regional Support provided informational webinars for both schools and districts about how to complete each of the requirements in the law, a visual timeline for completing all steps outlined in legislation, and regional trainings focusing on the platform used for submitting the comprehensive improvement plans. Districts/schools were given until December 4, 2022, to update/submit the 2022-2023 comprehensive improvement plan. After reminder emails and formal letters of noncompliance, 100% of schools and districts designated as Low Performing submitted an improvement plan via the NCStar platform. For the 2022 state Low Performing designations, the webinar announcements and a visual timeline for submission can be found on page 21.

### *Trends and Patterns from Low-Performing Plans*

The Office of District & Regional Support and the Office of Charter Schools provided feedback to Low-Performing districts, schools, and charters within each region through NCStar. NCStar is a web-based platform that guides a district or school team in charting its improvement and managing the continuous improvement process. The plans for improvement submitted by low-performing districts and schools focused on practices that would help achieve yearly goals and were submitted to the North Carolina Department of Public Instruction for feedback through NCStar. Many of the plans contained similar strategies for addressing the needs in low-performing schools and the data summarized in Table 3 also suggests implications for ongoing professional development to continue to build the capacity of district and school personnel. Identifying these trends has been an integral aspect of developing and continuing effective practices of support for classroom, building level, and district level personnel.

In addition to the themes found in Table 3, one common finding is the limited coaching statewide that is occurring from district to schools regarding school improvement. Many districts lack the human capital and resources to devote time to assist school administrators and/or school improvement teams. A study by the SERVE Center at UNC-G also found the need for constructive communication between districts and schools around school improvement planning<sup>1</sup>. Respondents in the SERVE study indicated that the support and guidance provided by district coaches when available were of great help. Unfortunately, a number of respondents to the study shared that no district coach was assigned to their school.

<sup>1</sup>SERVE Center at UNCG. (August 2019). NCStar: A pilot study of fidelity of implementation.

**Table 3: Common Themes in Low-Performing Plans**

<b>Areas for Growth</b>
Plan is a compliance artifact that helps meet statutory requirements instead of a guiding, living document that drives improvement
No performance measures that help the school keep track of progress towards goals and allow for data-driven decisions to be made throughout the school year
Lack of understanding of a tiered-instructional model that contains interventions that help all students achieve success
<b>Promising Improvements</b>
Distribution of action steps and indicators in plans resulting in leadership capacity being built schoolwide and sustainability of transformative practices
Increase participation and membership of school improvement team members such that more voices are heard in decision-making process
Stronger evidence of vision and aligned action for school implementation of effective practices.

*Strategic Reform Services: School Reform Models*

In addition to the themes identified through these plans, the State Board of Education sought to identify practices that nationally supported school and district improvement. Successful implementation with fidelity of the components of the school reform models Transformation, Turnaround, Restart, and Closure showed promise in improving chronically under-performing schools nationally. Aligning with North Carolina’s law for reform of low-performing schools (G.S. 115C-105.37B) the State Board of Education adopted a policy (DSTR-040) in May of 2016, allowing districts with recurring low-performing schools an opportunity to apply for approval to implement components of these reform initiatives.

A summary of each reform initiative can be found in Table 4. Recurring low-performing schools are those schools that have been low-performing for two of the previous three consecutive years. The list of recurring low-performing schools can be found in the Appendix.

In March of 2020, the State Board of Education approved updates to the DSTR-040 policy, which provided clarification specific to the Restart Model on the criteria for Academic Gain, the monitoring cycle, and the continued authorization for districts with Restart schools. Due to the impact of COVID19, the policy was updated again in May of 2020 and November 2021, to account for the lack of performance data to extend the monitoring cycle. In December of 2020, the policy was updated to include an expressed commitment of the district to the Restart model during the full monitoring cycle. In September of 2022, revisions to the policy included clarification concerning Continued Authorization, support, and Removing Authority for the Model.

**Table 4: School Reform Models**

<b>Transformation</b>	In order to qualify for implementation of the transformation model, the LEA must demonstrate that a school has created a plan for developing and improving teacher and school leader effectiveness; for implementing comprehensive instructional reform strategies; for increasing learning time; for creating community-oriented schools; and for providing operational flexibility and sustain support. The LEA shall submit specific goals for academic
-----------------------	--



	achievement and shall submit a budget showing the revenues and expenditures needed to reach the goals.
<b>Turnaround</b>	In order to qualify for implementation of the turnaround model, the LEA submits specific grounds supporting the implementation of this model; specifies the academic goals expected from implementation of this model; specifies the procedures to be utilized in removing staff, including procedures consistent with Due Process; describes with specificity the new governance structure and the budget to be implemented; sets forth specific academic achievement expected to be realized from use of this model.
<b>Restart</b>	In order to qualify for implementation of the restart model, the LEA submits a detailed plan outlining the goals to be achieved, including how to provide each student with the opportunity for a sound basic education; a statement as to how operating the school with the same exemptions from statutes and rules as a charter school authorized under N.C.G.S. 115C-218 et seq. will facilitate accomplishing these goals; how these exemptions will increase student achievement; whether the LEA will employ an educational management organization and, if so, the name and credentials of that organization and a budget setting out anticipated revenue and expenditures necessary to achieve the goal. A school operated under this subdivision remains under the control of the local board of education, and employees assigned to the school are employees of the local school administrative unit.
<b>Closure</b>	In order to qualify for implementation of the closure model, the LEA submits the specific grounds recommending closure of a particular school; the procedures it intends to follow in closing the school, including opportunities for public hearing; the procedures for ensuring a smooth transition for employee and students affected by the closure; how the resources realized from closure will continue to support student achievement, and the specific academic gains expected to be realized by the closure.

As of July 2023, twenty-eight school districts have been approved to implement a reform model, all of which selected the Restart Model. Table 4.1 summarizes the current information of authorization for reform model implementation.

**Table 4.1: 2023 School Reform Model Totals**

<b>Reform Model Selected</b>	<b>Number of Participating Schools</b>
Transformation	0
Turnaround	0
Restart	158
Closure	0

All Reform Models are required by GS 115C-105.37B and State Board Policy DSTR-040 to submit an Annual Report documenting academic gains. Schools complete the report all subsequent years after completing the first year of implementation of the approved Reform Model. Table 4.2 summarizes the number of schools submitting an annual report after their initial year of implementation. The 55 schools in Cohort 1 have implemented the Restart Model since either 2016-2017 or 2017-2018. There are 47 schools from Cohort 2 who have implemented the model since 2018-2019. Cohort 3 included an additional 13 schools implementing the model since 2019-2020. Cohort 4 included an additional 16 schools implementing the Restart Model since 2020-2021. Finally, Cohort 5 added 17 more schools implementing

during the 2021 and one of those schools has since closed as of July 1, 2023. It should be noted that since the identification of cohorts, the authorization of the model has either been rescinded or removed from four schools in two districts and two schools have closed.

**Table 4.2: Annual Report Summary – Number of Schools Reporting**

Annual Report Restart Schools	Number of Participating Schools	Cohort
Submitted March 2019*	58	Cohort 1
Submitted December 2019	107	Cohort 1-2
Submitted December 2020	120**	Cohort 1-3
Submitted December 2021	135	Cohort 1-4
Submitted December 2022	148	Cohort 1-5

\*Submission deadline delaying due to Hurricane Florence. Original submission date would have been December 2018.

\*\*One school in Cohort 1 has since rescinded their Restart application adjusting the current total to 119 Restart schools in Cohort 1, 2, & 3.

Restart Model schools are monitored for their progress in demonstrating Academic Gain. There are five criteria for Academic Gain including: Recurring Low-Performing designation, School Growth Status, Achievement Score, Subgroup Growth Status, and school defined Flexibility Outcomes.

Yearly progress monitoring is conducted to inform the school if they are above, meeting, or not meeting the expectations for Academic Gain and based on a comparison between the year before implementation and the most recent year of implementation.

The *December 2022 Restart Annual Report* was able to include the monitoring Academic Gain data using the 2022 Accountability data available for the first time since 2019, due to the impact of COVID-19.

The *December 2022 Restart Annual Report* required reporting on the Restart flexibilities utilized in the 2021-2022 school year. Of the 148 schools implementing the Restart Model and required to report, the following Table 4.5 represents a summary of the flexibilities reported as being employed in the Annual Report. Flexibilities are self-reported in the annual report.

**Table 4.3: Restart Model Summary on Utilized Flexibilities During 2021-2022**

**(Based on December 2022 Annual Report)**

Flexibility/Exemption from law	Percentage of Schools Utilizing Flexibility	Number of Schools Utilizing Flexibility
Budget	95%	142 / 148 schools
Calendar	36%	53 / 148 schools
Employment Requirement	29%	43 / 148 schools
Standard Course of Study/Curriculum	5%	7 / 148 schools
Assessment	12%	18 / 148 schools
Class Size	8%	12 / 148 schools

The Restart Annual Report is due on December 1<sup>st</sup> of each year as outlined in SBE DSTR-040 policy. The deadline for the upcoming *December 2023 Restart Annual Report* is December 1<sup>st</sup>, 2023, and thus, Academic Gain results will be calculated after this time. Preliminary data released to the SBE in September 2023 indicate the following changes based on 2022-2023 performance data in Table 4.4 and Table 4.5. Please

note these tables represent all schools implementing during the comparison years, while Academic Gain state summary data compares the cohorts of schools on the annual report.

Restart Schools by Growth Status

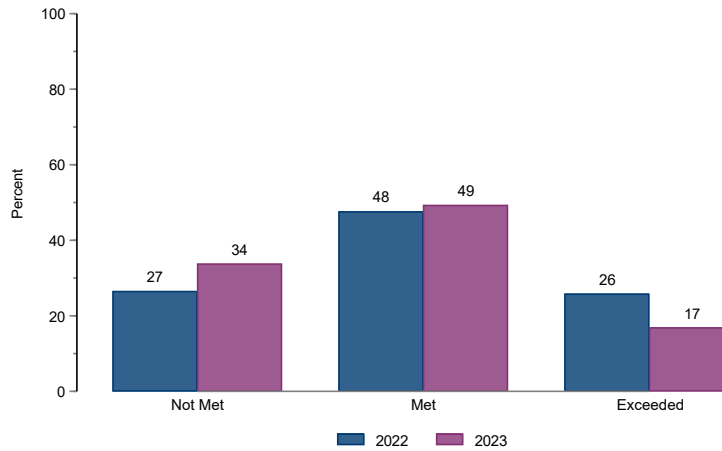


Table 4.4 Percentage of Restart Schools by Growth Status

Growth status	Number in 2022	Number in 2023	Percent in 2022	Percent in 2023	Total in 2022*	Total in 2023
Exceeded	38	25	26%	17%	147	148
Met	70	73	48%	49%	147	148
Not Met	39	50	27%	34%	147	148

\*Two Restart schools have closed since 2022

Restart Schools by Low-Performing Designation

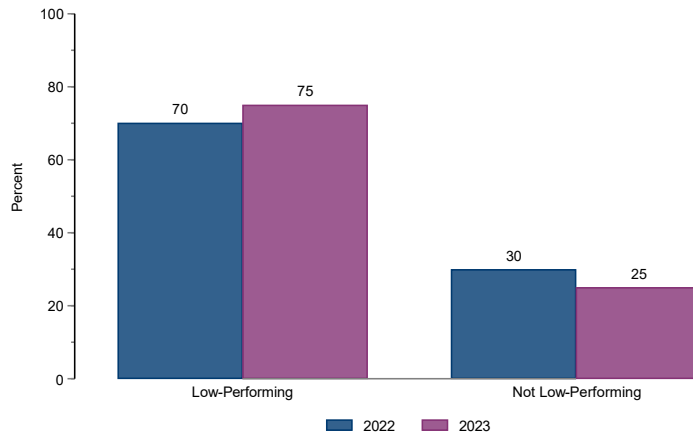


Table 4.5 Percentage of Low Performing Designations in Restart Model Schools

State Designation	Restart Schools 2022	Restart Total 2022	Percent Restart LP 2022	Restart Schools 2023	Restart Total 2023	Percent Restart LP 2023
No Longer Low Performing	44	147	30%	37	148	25%
Low Performing	103	147	70%	111	148	75%

\*Two Restart schools have closed since 2022

## Low-Performing Districts and Schools

In September of 2023, the State Board of Education approved the preliminary list of 2022-2023 low-performing schools, traditional and charter; low-performing districts; and recurring low-performing schools. The full list of schools and districts can be found in the Appendix beginning on page 22.

### *Accountability Data Sets and Reports*

For the 2022–23 school year, schools continued to deal with student learning loss due to the COVID pandemic. Data from the 2022–23 school year should be reviewed in these contexts and comparisons to prior years’ results should be made with caution. Table 5 provides a summary of the low-performing schools and districts by NC State Board Region.

**Table 5: Summary of the 2022-23 State Designation of Low-Performing in Traditional Schools, Charter Schools and Districts by Region**

Year	SBE Region	PSU	Traditional	Charter	Lab
2023	North Central	3	144	11	0
2023	Northeast	8	69	3	0
2023	Piedmont-Triad	2	145	11	2
2023	Sandhills	4	93	4	0
2023	Southeast	4	80	8	1
2023	Southwest	3	151	21	0
2023	Western	1	26	0	0
2023	Northwest	0	33	1	0
2023	Virtual	0	0	1	0

Table 6 below provides the summary of schools and districts as leaving (no longer Designated Low Performing), stayers (remained as designated Low Performing), and entering (newly designated Low Performing), the net change from the 2021-2022 and the new total for 2022-2023. When comparing the results from 2021-2022 to 2022-2023, there is an overall decrease of 60 low-performing schools, from 864 to 804. It should be noted that even with the recovery from the pandemic, 278 schools were no longer designated as Low Performing (Leavers LP Status) while 218 schools entered the low performing designation (Enters LP Status). When comparing the low-performing districts in 2021-2022 to 2022-2023, there was a decrease of 4 low-performing districts, from 29 to 25. Further analysis of the data shows a breakdown of schools and districts that remain on the list, the totals that are no longer low-performing and those schools and districts newly identified in the recent release of Accountability results.

**Table 6: Comparison Data for 2021-2022 to 2022-2023 of State Designations of Low Performing**

	Schools 2022	Schools 2023	Leavers LP Status	Stayers LP Status	Enters LP Status	Change
All LP	864	804	278	586	218	-60
LP Traditional Public Schools	793	741	258	535	206	-52
LP Lab Schools	4	3	1	3	0	-1
LP Charter Schools	67	60	19	48	12	-7
LP Districts	29	25	11	18	7	-4
Recurring Traditional LP schools	464	658	57	407	251	194
Continually LP Charter schools	35	57	5	30	27	22

**Tables 7: Comparison Data for 2021-2022 to 2022-2023 of State Designations of Low Performing by School Performance Grade and Growth Status.** A comparison breakdown of the 2021-2022 and 2022-2023 schools with a state designation of Low Performing by school performance grade and growth status by the definition criteria established in Session Law 2015-241 House Bill 97.

State Board Region	School Performance Grade	EVAAS Growth Status	Schools 2022 Charter	Schools 2023 Charter	Schools 2022 Lab	Schools 2023 Lab	Schools 2022 Traditional	Schools 2023 Traditional
All	D	Met	28	24	1	0	292	319
All	D	Not Met	22	17	0	0	280	248
All	F	Met	10	10	3	2	95	54
All	F	Not Met	7	9	0	1	126	120
North Central	D	Met	7	4	0	0	63	76
North Central	D	Not Met	5	3	0	0	38	40
North Central	F	Met	2	2	0	0	16	6
North Central	F	Not Met	3	2	0	0	21	22
Northeast	D	Met	0	2	1	0	33	30
Northeast	D	Not Met	1	0	0	0	15	23
Northeast	F	Met	1	0	0	0	10	6
Northeast	F	Not Met	0	1	0	0	9	10
Northwest	D	Met	0	0	0	0	21	15
Northwest	D	Not Met	0	0	0	0	22	15
Northwest	F	Not Met	0	1	0	0	2	3
Piedmont-Triad	D	Met	4	6	0	0	60	54
Piedmont-Triad	D	Not Met	4	3	0	0	64	52
Piedmont-Triad	F	Met	1	1	2	2	19	11
Piedmont-Triad	F	Not Met	0	1	0	0	30	28
Sandhills	D	Met	1	4	0	0	32	45
Sandhills	D	Not Met	3	0	0	0	23	31
Sandhills	F	Met	1	0	0	0	13	6
Sandhills	F	Not Met	1	0	0	0	16	11
Southeast	D	Met	5	5	0	0	22	36
Southeast	D	Not Met	2	1	0	0	36	28
Southeast	F	Met	1	1	1	0	13	5
Southeast	F	Not Met	1	1	0	1	13	11
Southwest	D	Met	11	3	0	0	46	48
Southwest	D	Not Met	5	9	0	0	63	50
Southwest	F	Met	4	6	0	0	23	19
Southwest	F	Not Met	2	3	0	0	33	34

Virtual	D	Not Met	2	1	0	0	0	0
Western	D	Met	0	0	0	0	15	15
Western	D	Not Met	0	0	0	0	19	9
Western	F	Met	0	0	0	0	1	1
Western	F	Not Met	0	0	0	0	2	1

## Overview of North Carolina Department of Public Instruction Support

The Department of Public Instruction provides a series of support services to districts and schools designated as low performing. All schools and districts designated low performing receive feedback based on best practices related to school improvement planning from the Department of Public Instruction. Additional services are provided to schools with a history of state low performing designations through the Office of District & Regional Support.

### *Office of District & Regional Support*

The statewide unit of District and Regional Support (DRS) within the Division of District & School Support Services provides support for Low Performing and Recurring Low Performing Schools across the state. The division includes the following sections: Diagnostic Services, Strategic Reform, and the currently piloted, intensive intervention known as Transformation (CARES). The mission of DRS is to provide support to identified districts and schools through partnerships that result in every child having equitable access to a meaningful, sound basic education. DRS works on the development and implementation of processes, procedures, and structures that will lead to higher student achievement and sustainable change. As the needs of the district or school increase, the level of services provided also increases.

### *Diagnostic Services: Comprehensive Needs Assessments and Follow-Up Support*

Diagnostic Services provide evidence-based frameworks to assist identified districts/schools in analyzing and determining the impact of practices on student learning. Diagnostic Services result in a diagnosis of strengths and weaknesses to support districts and schools in improving outcomes. These steps are essential in supporting low performing schools. NC DPI's Comprehensive Needs Assessment process is a systematic assessment of instructional practices, processes, and systems within a school district that assists district and school leadership in determining needs, examining their nature and causes, and setting priorities for future action led by the Diagnostic Services team. The assessment consequently guides meaningful strategic/improvement planning at both the district and/or school level and suggests benchmarks to guide improvement evaluation. Research suggests that school districts that undergo a careful analysis of data and information from a third-party make better decisions about what to change and how to institutionalize systemic change. The district/school Comprehensive Needs Assessment provides a framework for conducting this analysis in a process-driven, evidence-based way.

The two-day site visit conducted as part of the process consists of collaborative discussions with district and school leadership; classroom visits; and focus group sessions with teachers, students, and parents. The District Comprehensive Needs Assessment site visit concentrates on collaborative discussions with the superintendent; collaborative discussions with district-level staff; focus group sessions with school board

members and principals; and observation of a school board meeting. The school and district assessment are underpinned by the NC DPI Comprehensive Needs Assessment rubric.

The assessment culminates in a written report that is triangulated in terms of evidence and resulting impact on students and improvement efforts. The draft form is sent to district or school leadership for a check of factual accuracy; and is finalized and provided to district, school, and Department of Public Instruction leaders so that they may use this information to drive, revise, and support improvement efforts.

After the completion of the Comprehensive Needs Assessment Process, follow-up support is provided by way of a Virtual Bridge Support session with the school's administrative team and followed by a two-day professional development session referred to as the "CNA Unpacking." Members of Diagnostic Services work with the school principal and the School Improvement Team to help them in understanding the CNA process and rubric; completing a root cause analysis exercise around an identified areas for improvement; and connecting resulting actions to existing improvement indicators that translate to the school's improvement plan. Follow-up support for districts that have engaged in a Comprehensive Needs Assessment includes engaging with the Superintendent, district-level staff, and some board members to support district leadership in improving the districts strategic plan and support for schools.

### *CARES: An Intensive Intervention Coaching Pilot*

CARES Support is the highest level of intervention within the Department of Public Instruction. It requires a formal partnership to identify and remedy root cause(s) and develop highly focused incremental action steps with performance measures and clearly monitored plans for improved governance.

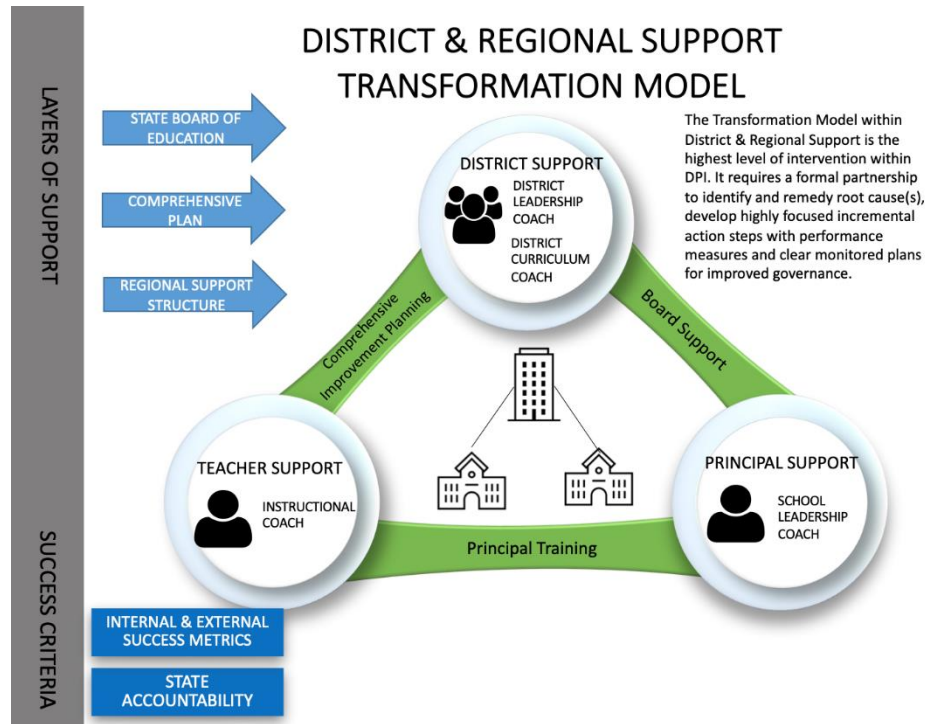
The purpose of this initiative is to assist those in need of the greatest intervention in managing obstacles to achieving student success during the pandemic. Support was targeted and continues, based on schools with chronic performance issues (low performing status since 2015-2016 designation), high poverty status (defined in WestEd report), and percentage of students affected in the district. Trend analysis revealed that 181 traditional schools had been on the list for low performance since the new definition took effect in 2015. These schools and districts were categorized internally as *chronically low performing*. These schools were also then analyzed according to high poverty status (>70%) and percentage of students affected. Districts and schools were approached, and a partnership was formed with those who were receptive to participating.

With the federal funding that has been provided to assist with the impact of COVID-19, DRS developed additional support to extend the current services offered to low performing schools. In this model, staff were assigned to districts and/or schools to provide daily coaching and support with the goal of improving daily practices that lead to improved student achievement. The Office of DRS developed partnerships with 24 districts to support 81 schools statewide. During the 2022-2023 school year, the number of schools supported grew to 102 by district requests (see the Appendix for list of 22-23 CARES schools). In 2023-2024, the number is now 110 schools supported in the 24 districts.

In March of 2023, the State Board of Education approved the use of additional ESSER funds (\$2,700,000) to expand the support given to low performing schools. A review of those schools who have persisted with this designation since 2015 revealed 22 districts that could possibly benefit from expanded DPI services. Eight districts agreed to a partnership where retired school principals would serve as coaches to schools with chronic performance issues while seven districts chose to dive deeper in RELAY intensive coaching clusters that build on practices learned through our North Carolina Instructional Leadership Academy (NC ILA).

## THE MODEL

The model provides support at those areas of district and school governance research shows is essential to improved outcomes: classroom level, principal level, curriculum level, and district leadership level. The model provides “boots-on-the-ground” support for schools and districts continually designated low performing.



## SUPPORT ROLES

- District Leadership Coach (DLC) – District Leadership Coaches work onsite at the district level to build leadership capacity by developing and implementing reformative and innovative processes, procedures, and structures that will lead to improved student achievement. This role leads the Assistance Team that is outlined in Part 3 of Chapter 115C of the General Statutes.
- District Curriculum Coach (DCC) – District Curriculum Coaches provide onsite support to the six CARES districts by assisting district leadership in the development and implementation of strategic methods to improve curriculum alignment, the use of evidence-based instructional practices, and the effective implementation of the North Carolina Standard Course of Study.
- School Leadership Coach (SLC) – School Leadership Coaches work at the school site to build the capacity of the principal and school leadership team with an emphasis on instructional leadership and the development of continuous improvement processes that result in strong systems and structures.
- Instructional Coach (IC) – Instructional Coaches will provide high leverage targeted on school site instructional support to identified low-performing districts/schools. The ICs will work in collaboration with the DLCs, DCCs, and SLCs.

Because of the temporary federal funding, DRS has established a prototype for the highest level of intensive support known as the CARES initiative. This enables DRS to enter a formal partnership with and provide resources to chronically low-performing schools and districts. The support has been established to align to the permanent work of the division and directly connects to both well-established levels of Diagnostic Services and Strategic Reform.



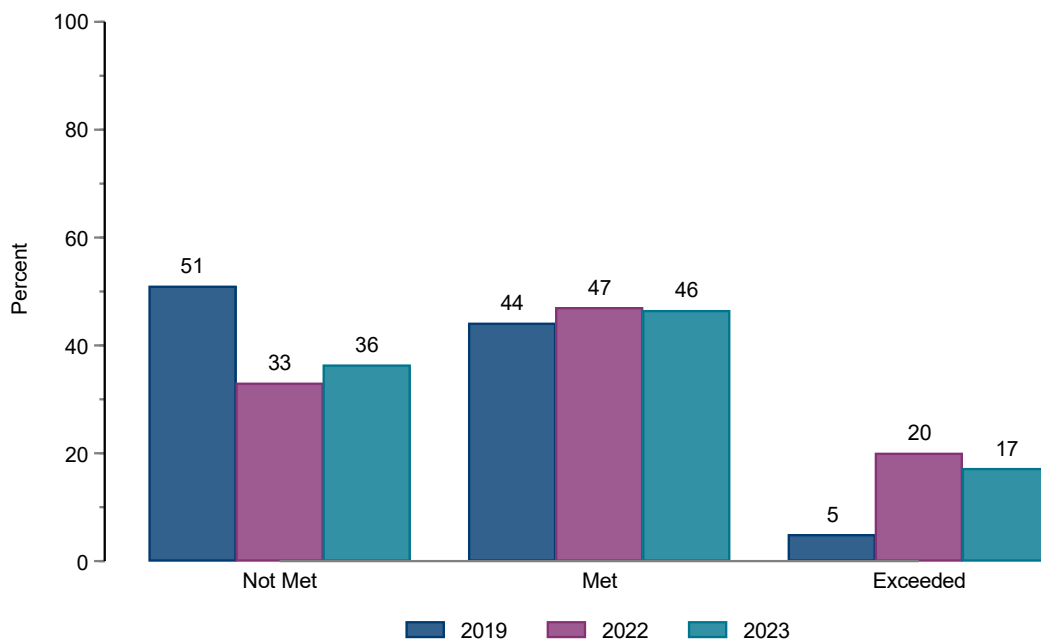
## North Carolina Instructional Leadership Academy (NC ILA)

The NC Instructional Leadership Academy (NC ILA) was launched in 2022-2023 by providing school and district leaders the unique opportunity to deepen their skills in instructional leadership levers as identified in Leverage Leadership (Bambrick-Santoyo, 2012) and Leverage Leadership 2.0 (Bambrick-Santoyo, 2018). The curriculum is rooted in pedagogical theory and grounded in evidence of what works best in schools. The program incorporates skills and mindsets that have the greatest impact on student learning. The faculty are experienced PK-12 school leaders with track records of helping students achieve exceptional academic growth. NC ILA is training 1500 educators from approximately 400+ schools and 70+ public school units. The two-year program takes participants through 10 face-to-face sessions covering topics such as: Observation & Feedback, Weekly Data Meetings, Academic Monitoring, Weekly Planning Meetings, Strong Start Playbooks, Rigor Playbooks, and Deconstructing Standards.

### Success Metrics

When the CARES Intensive Intervention work started in 21-22, coaches were deployed to support 81 schools and 24 districts. 35 of the original 81 schools were found in 18 districts and were schools that had been designated as low performing since 2016. The remaining 46 schools supported were low-performing schools in 6 districts that had a continuous history of being designated a low-performing district. In 22-23, district leaders in the 24 districts requested that we increase support to more schools and coaches started supporting 102 schools. The chart below shows the impact of the CARES team of coaches after working in these 102 schools in 22-23. Schools that previously did not meet growth decreased from 51 to 36 and schools that exceeded growth have increased from 5 to 17. Districts have also seen the impact of CARES partnerships and both Tyrrell County Schools and Nash County Public Schools have successfully exited low-performing district status. Additional data on CARES is available through the Education Policy Initiative at Carolina (EPIC) research study. This research study is available on request and is the product of a partnership between The N.C. Department of Public Instruction (NCDPI) and North Carolina Collaboratory.

### CARES Schools by Growth Status



CARES: AN INTENSIVE INTERVENTION FUNDING\*

<b>ESSER/CARES FEDERAL FUNDING (TO DATE)</b>		
<b>2020-2022</b>	Positions: School Leadership Coach (14) Contracts: District Leadership Coach (3) Instructional Leadership Pilot (NC ILA)	\$ 4,528,800
<b>2022-2023</b>	Positions: School Leadership Coach (14) Contracts: District Leadership Coach (3)	\$ 2,993,290
<b>2022-2024</b>	Positions: School Leadership Coach (14) Contracts: District Leadership Coach (4) Instructional Leadership (NC ILA) Pilot Yr 2 Instructional Leadership (NC ILA) Pilot Yr 3 NC ILA Statewide Yr 1 NC ILA Statewide Yr 2 Flexible Improvement/Intervention Grants	\$18,993,290
	Positions: DLC (2), SLC, IC (4)	\$ 2,639,311
	Positions: School Model Instructional Coach (7)	\$ 2,535,776
<b>2023-2024</b>	Expansion of CARES with contract coaches and Relay Intensive Clusters	\$2,700,000

*\*As of the date of this report, funding for the initial fourteen time-limited positions have been secured until September 2024. Session Law 2021-180 Senate Bill 105 stipulated 20 positions to be created with \$2,000,000 dollars for funding. The Department has covered deficits for all 20 positions by using administrative ESSER II funds. To complete the model as designed, the Department has used additional ESSER III funds to secure positions needed for classroom level support.*

## Appendix

## 2022 Registration Information Low Performing Webinars

### September 2022 Registration for Low Performing Webinars to be Sent to Communications

After the release of the Low Performing designation lists for schools and districts, the DPI Office of District and Regional Support provides a webinar for leaders in these schools and/or districts, whether newly designated or continuing in the designation.

The webinars will provide information for leaders concerning the policies, expectations, and deadlines for the Comprehensive Plan required for schools designated as Low Performing and districts designated as Low Performing, respectively as outlined in S.L 115C-105.37 and 115C.39A.

Please share the webinar registration information below with principals of schools designated as Low Performing and district personnel in districts designated as Low Performing.

PLEASE NOTE: Each webinar, one for schools designated as Low Performing and one for districts designated as Low Performing, will be offered twice, and participants need only attend one of the webinars offered. Only leaders of schools and districts designated as Low Performing need to register. The Low Performing designation lists may be reviewed on the DPI website at <https://www.dpi.nc.gov/2021-22-low-performing-schools-low-performing-districts-recurring-low-performing-schools-and>

Please find the registration links below:

#### **Districts Designated as Low Performing Webinar Options: (Select one)**

*After registering, you will receive a confirmation email containing information about joining the webinar.*

**Option 1 on Sep 21, 2022 @3:00 PM:**

<https://ncgov.webex.com/ncgov/j.php?RGID=r9f4b277a4d0d94999fa50a7a57f8d8a2>

**Option 2 on Sep 28, 2022 @9:00 AM:**

<https://ncgov.webex.com/ncgov/j.php?RGID=r704fd1b919f984fe2e5d46aac3ef339e>

\*\*\*\*\*

#### **Schools/Charters Designated as Low Performing Webinar Options (Select one)**

*After registering, you will receive a confirmation email containing information about joining the webinar.*

**Option 1 on Sep 21, 2022 @4:00 PM:**

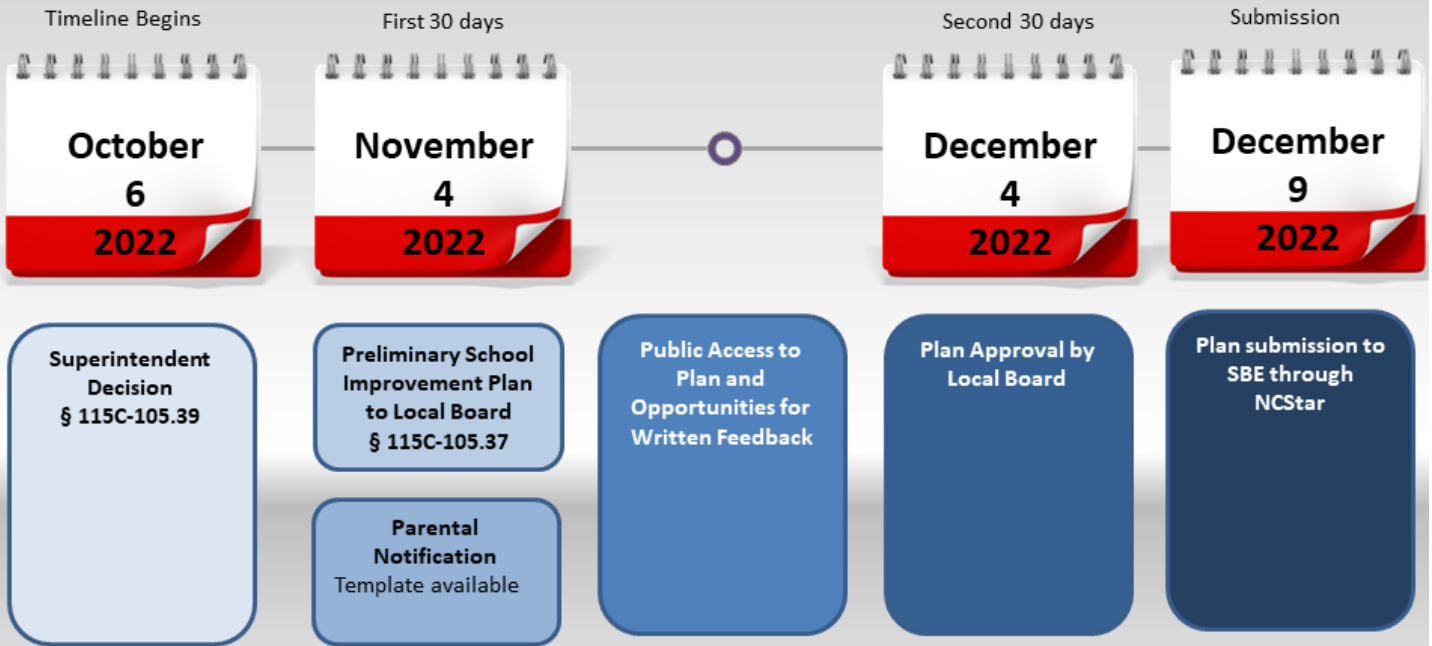
<https://ncgov.webex.com/ncgov/j.php?RGID=r91a01d4371c0d449b3b4860bcd717243>

**Option 2 on Sep 28, 2022 @10:00 AM:**

<https://ncgov.webex.com/ncgov/j.php?RGID=rb808e360d6f5a872b3addc96d7f94500>

*2022 Timeline for Submission of School Improvement Plans  
for Schools and Districts Designated as Low Performing*

# State Designation Timeline



### **2022-2023 Low-Performing Schools List**

A low-performing school has a School Performance Grade of 'D' or 'F', and a growth status of 'Met' or 'Not Met.' Schools are sorted by public school unit with charter schools at the end of the list.

Note: From 2018–19 through 2021–22 Southside Ashpole was part of the Innovative School District with a school code of 295300. Beginning with the 2022–23 school year, Southside Ashpole is transferred back to Public Schools of Robeson County using a school code of 780408.

<b>District Name</b>	<b>School Code</b>	<b>School Name</b>	<b>State Board Region</b>	<b>Grade Span</b>	<b>School Performance Grade</b>	<b>EVAAS Growth Status</b>
Alamance-Burlington Schools	010310	Broadview Middle	Piedmont-Triad	06-08	F	Not Met
Alamance-Burlington Schools	010326	Eastlawn Elementary	Piedmont-Triad	PK-05	F	Not Met
Alamance-Burlington Schools	010346	B. Everett Jordan Elementary	Piedmont-Triad	0K-05	D	Met
Alamance-Burlington Schools	010348	Graham High	Piedmont-Triad	09-12	D	Met
Alamance-Burlington Schools	010350	Graham Middle	Piedmont-Triad	06-08	F	Not Met
Alamance-Burlington Schools	010351	Grove Park Elementary	Piedmont-Triad	PK-05	F	Met
Alamance-Burlington Schools	010354	Harvey R Newlin Elementary	Piedmont-Triad	PK-05	F	Met
Alamance-Burlington Schools	010357	Haw River Elementary	Piedmont-Triad	PK-05	F	Met
Alamance-Burlington Schools	010358	Hillcrest Elementary	Piedmont-Triad	PK-05	D	Met
Alamance-Burlington Schools	010360	Hugh M Cummings High	Piedmont-Triad	09-12	D	Met
Alamance-Burlington Schools	010364	North Graham Elementary	Piedmont-Triad	PK-05	F	Not Met
Alamance-Burlington Schools	010372	Pleasant Grove Elementary	Piedmont-Triad	PK-05	D	Met
Alamance-Burlington Schools	010374	R Homer Andrews Elementary	Piedmont-Triad	PK-05	D	Not Met
Alamance-Burlington Schools	010380	South Graham Elementary	Piedmont-Triad	PK-05	D	Not Met
Alamance-Burlington Schools	010392	Sylvan Elementary	Piedmont-Triad	PK-05	D	Met
Alamance-Burlington Schools	010394	Turrentine Middle	Piedmont-Triad	06-08	F	Not Met
Alamance-Burlington Schools	010450	Alamance Virtual School	Piedmont-Triad	0K-12	D	Met
Alexander County Schools	020306	East Alexander Middle	Northwest	06-08	D	Not Met
Alexander County Schools	020316	Hiddenite Elementary	Northwest	PK-05	D	Not Met
Alleghany County Schools	030320	Sparta Elementary	Northwest	PK-08	D	Met
Anson County Schools	040306	Anson High School	Southwest	09-12	D	Not Met
Anson County Schools	040309	Anson Middle	Southwest	06-08	F	Not Met
Anson County Schools	040311	Wadesboro Primary	Southwest	0K-03	F	Not Met
Anson County Schools	040316	Lilesville Elementary	Southwest	0K-05	D	Met
Anson County Schools	040324	Morven Elementary	Southwest	0K-05	D	Met
Anson County Schools	040330	Wadesboro Elementary	Southwest	04-05	F	Met
Avery County Schools	060318	Avery Middle	Northwest	06-08	D	Not Met
Avery County Schools	060328	Newland Elementary	Northwest	PK-05	D	Met
Beaufort County Schools	070325	Chocowinity Middle	Northeast	05-08	D	Not Met
Beaufort County Schools	070327	John C Tayloe Elementary	Northeast	02-03	D	Met
Beaufort County Schools	070328	John Small Elementary	Northeast	04-05	D	Not Met
Beaufort County Schools	070329	Northeast Elementary	Northeast	PK-08	D	Met
Beaufort County Schools	070338	P S Jones Middle	Northeast	06-08	D	Not Met
Beaufort County Schools	070340	S W Snowden Elementary	Northeast	PK-08	D	Met
Beaufort County Schools	070342	Washington High	Northeast	09-12	D	Not Met
Bertie County Schools	080312	Bertie High	Northeast	09-12	D	Met

Bertie County Schools	080314	Bertie Middle	Northeast	06-08	F	Not Met
Bladen County Schools	090318	Bladen Lakes Primary	Sandhills	PK-04	D	Met
Bladen County Schools	090320	Clarkton School of Discovery	Sandhills	05-08	D	Not Met
Bladen County Schools	090332	Elizabethtown Middle	Sandhills	05-08	F	Met
Bladen County Schools	090333	Elizabethtown Primary	Sandhills	PK-04	D	Met
Bladen County Schools	090352	Plain View Primary	Sandhills	PK-04	D	Not Met
Bladen County Schools	090365	Tar Heel Middle	Sandhills	05-08	D	Not Met
Brunswick County Schools	100304	Bolivia Elementary	Southeast	PK-05	D	Not Met
Brunswick County Schools	100316	Leland Middle	Southeast	06-08	D	Met
Brunswick County Schools	100332	Shallotte Middle	Southeast	06-08	D	Not Met
Brunswick County Schools	100338	Supply Elementary	Southeast	PK-05	D	Not Met
Brunswick County Schools	100341	Town Creek Middle	Southeast	05-08	D	Not Met
Buncombe County Schools	110338	Owen Middle	Western	06-08	D	Met
Buncombe County Schools	110342	Erwin Middle	Western	07-08	D	Met
Buncombe County Schools	110348	Emma Elementary	Western	0K-04	D	Met
Buncombe County Schools	110372	Johnston Elementary	Western	PK-04	F	Not Met
Buncombe County Schools	110384	Oakley Elementary	Western	PK-05	D	Not Met
Buncombe County Schools	110401	Enka Middle	Western	07-08	D	Met
Buncombe County Schools	110412	Williams Elementary	Western	PK-05	D	Not Met
Buncombe County Schools	110425	Enka Intermediate	Western	05-06	D	Not Met
Buncombe County Schools	110444	Woodfin Elementary	Western	0K-05	D	Met
Buncombe County Schools	110451	Eblen Intermediate	Western	05-06	D	Not Met
Asheville City Schools	111304	Hall Fletcher Elementary	Western	PK-05	D	Met
Burke County Schools	120316	Forest Hill Elementary	Northwest	PK-05	D	Met
Burke County Schools	120364	Oak Hill Elementary	Northwest	PK-05	D	Not Met
Burke County Schools	120376	Table Rock Middle	Northwest	06-08	D	Not Met
Burke County Schools	120390	Walter R Johnson Middle	Northwest	06-08	D	Met
Cabarrus County Schools	130313	Concord Middle	Southwest	06-08	D	Met
Cabarrus County Schools	130321	Carl A Furr Elementary	Southwest	0K-05	D	Not Met
Cabarrus County Schools	130329	Rocky River Elementary	Southwest	PK-05	D	Not Met
Cabarrus County Schools	130342	W M Irvin Elementary	Southwest	PK-05	D	Met
Cabarrus County Schools	130344	Wolf Meadow Elementary	Southwest	0K-05	F	Not Met
Cabarrus County Schools	130357	Roberta Road Middle	Southwest	06-08	D	Not Met
Kannapolis City Schools	132304	A L Brown High	Southwest	09-12	D	Not Met
Kannapolis City Schools	132308	Forest Park Elementary	Southwest	PK-05	D	Met
Kannapolis City Schools	132312	Fred L Wilson Elementary	Southwest	0K-05	D	Met
Kannapolis City Schools	132330	Kannapolis Middle	Southwest	06-08	F	Not Met
Kannapolis City Schools	132332	Shady Brook Elementary	Southwest	0K-05	F	Met
Caldwell County Schools	140324	Gamewell Elementary	Northwest	PK-05	D	Not Met
Caldwell County Schools	140332	Gamewell Middle	Northwest	06-08	D	Not Met
Caldwell County Schools	140344	Happy Valley Elementary	Northwest	PK-08	D	Not Met
Caldwell County Schools	140360	Kings Creek Elementary	Northwest	PK-08	D	Not Met
Caldwell County Schools	140368	William Lenoir Middle	Northwest	06-08	D	Not Met
Caldwell County Schools	140384	Sawmills Elementary	Northwest	PK-05	D	Met

Caldwell County Schools	140388	Valmead Elementary	Northwest	PK-05	F	Not Met
Caldwell County Schools	140396	Whitnel Elementary	Northwest	PK-05	D	Met
Caswell County Schools	170316	Bartlett Yancey High	Piedmont-Triad	09-12	D	Not Met
Caswell County Schools	170334	North Elementary	Piedmont-Triad	PK-05	D	Not Met
Caswell County Schools	170339	Oakwood Elementary	Piedmont-Triad	PK-05	D	Met
Caswell County Schools	170342	South Elementary	Piedmont-Triad	PK-05	D	Met
Caswell County Schools	170344	Stoney Creek Elementary	Piedmont-Triad	0K-05	D	Met
Catawba County Schools	180343	Lyle Creek Elementary	Northwest	PK-06	D	Met
Catawba County Schools	180364	River Bend Middle	Northwest	07-08	D	Met
Catawba County Schools	180372	Saint Stephens Elementary	Northwest	0K-06	F	Not Met
Hickory City Schools	181316	Grandview Middle	Northwest	06-08	D	Met
Hickory City Schools	181332	Longview Elementary	Northwest	03-05	D	Not Met
Hickory City Schools	181344	Viewmont Elementary	Northwest	PK-05	F	Not Met
Newton Conover City Schools	182324	South Newton Elementary	Northwest	PK-05	D	Not Met
Chatham County Schools	190312	Chatham Middle	North Central	06-08	D	Not Met
Chatham County Schools	190350	Siler City Elementary	North Central	PK-05	D	Met
Cherokee County Schools	200304	Andrews Elementary	Western	PK-05	D	Met
Edenton-Chowan Schools	210304	Chowan Middle	Northeast	06-08	D	Not Met
Edenton-Chowan Schools	210306	D F Walker Elementary	Northeast	03-05	D	Not Met
Cleveland County Schools	230336	Elizabeth Elementary	Southwest	PK-05	D	Not Met
Cleveland County Schools	230362	Shelby Middle	Southwest	06-08	D	Met
Cleveland County Schools	230368	Township Three Elementary	Southwest	PK-05	D	Not Met
Cleveland County Schools	230370	Union Elementary	Southwest	PK-05	D	Not Met
Cleveland County Schools	230376	Washington Elementary	Southwest	PK-05	F	Not Met
Columbus County Schools	240308	Acme Delco Elementary	Sandhills	PK-06	D	Not Met
Columbus County Schools	240332	Chadbourn Elementary	Sandhills	PK-05	D	Met
Columbus County Schools	240334	East Columbus Junior-Senior High	Sandhills	07-12	D	Not Met
Columbus County Schools	240354	Hallsboro-Artesia Elementary	Sandhills	PK-06	D	Met
Columbus County Schools	240372	Tabor City Elementary	Sandhills	PK-05	D	Not Met
Columbus County Schools	240376	Tabor City Middle	Sandhills	06-08	D	Met
Columbus County Schools	240380	West Columbus High	Sandhills	09-12	D	Not Met
Columbus County Schools	240381	West Columbus School	Sandhills	PK-08	F	Not Met
Craven County Schools	250320	Vanceboro-Farm Life Elementary	Southeast	PK-05	D	Met
Craven County Schools	250332	H J MacDonald Middle	Southeast	06-08	D	Met
Craven County Schools	250336	Havelock Elementary	Southeast	PK-05	D	Not Met
Craven County Schools	250344	Havelock Middle	Southeast	06-08	D	Not Met
Craven County Schools	250348	J T Barber Elementary	Southeast	PK-05	F	Not Met
Craven County Schools	250360	Oaks Road Academy	Southeast	PK-05	D	Met
Cumberland County Schools	260310	Loyd E Auman Elementary	Sandhills	PK-05	D	Met
Cumberland County Schools	260320	Brentwood Elementary	Sandhills	PK-05	D	Met
Cumberland County Schools	260321	Douglas Byrd Middle	Sandhills	06-08	D	Met
Cumberland County Schools	260322	Douglas Byrd High	Sandhills	09-12	D	Met
Cumberland County Schools	260326	Elizabeth M Cashwell Elementary	Sandhills	PK-05	D	Met
Cumberland County Schools	260336	Anne Chesnutt Middle	Sandhills	06-08	D	Not Met



Cumberland County Schools	260340	College Lakes Elementary	Sandhills	0K-05	D	Met
Cumberland County Schools	260342	C Wayne Collier Elementary	Sandhills	PK-05	D	Not Met
Cumberland County Schools	260344	J W Coon Elementary	Sandhills	PK-05	D	Met
Cumberland County Schools	260348	Cumberland Mills Elementary	Sandhills	PK-05	D	Not Met
Cumberland County Schools	260358	Luther Nick Jeralds Middle	Sandhills	06-08	D	Met
Cumberland County Schools	260361	Ferguson-Easley Elementary	Sandhills	0K-05	F	Not Met
Cumberland County Schools	260367	Bill Hefner Elementary	Sandhills	PK-05	D	Met
Cumberland County Schools	260370	Ed V Baldwin Elementary	Sandhills	PK-05	D	Met
Cumberland County Schools	260372	Lewis Chapel Middle	Sandhills	06-08	D	Met
Cumberland County Schools	260382	Lucile Souders Elementary	Sandhills	PK-05	D	Not Met
Cumberland County Schools	260383	Mac Williams Middle	Sandhills	06-08	D	Not Met
Cumberland County Schools	260386	Margaret Willis Elementary	Sandhills	PK-05	D	Met
Cumberland County Schools	260400	Montclair Elementary	Sandhills	PK-05	D	Met
Cumberland County Schools	260404	William H Owen Elementary	Sandhills	PK-05	D	Met
Cumberland County Schools	260414	Benjamin J Martin Elementary	Sandhills	PK-05	D	Met
Cumberland County Schools	260425	South View Middle	Sandhills	06-08	D	Met
Cumberland County Schools	260440	Sunnyside Elementary	Sandhills	0K-05	D	Met
Cumberland County Schools	260450	Warrenwood Elementary	Sandhills	PK-05	D	Met
Cumberland County Schools	260452	Westarea Elementary	Sandhills	PK-05	D	Met
Cumberland County Schools	260459	William T Brown Elementary	Sandhills	PK-05	D	Met
Cumberland County Schools	260461	Cumberland Academy K-5 Virtual School	Sandhills	0K-05	D	Not Met
Currituck County Schools	270304	Central Elementary	Northeast	PK-06	D	Met
Currituck County Schools	270308	Currituck County Middle	Northeast	06-08	D	Not Met
Davidson County Schools	290309	Central Davidson Middle	Piedmont-Triad	06-08	D	Not Met
Davidson County Schools	290312	Churchland Elementary	Piedmont-Triad	PK-05	D	Met
Davidson County Schools	290322	E Lawson Brown Middle	Piedmont-Triad	06-08	D	Met
Davidson County Schools	290356	Reeds Elementary	Piedmont-Triad	PK-05	D	Not Met
Davidson County Schools	290364	Silver Valley Elementary	Piedmont-Triad	PK-05	D	Met
Davidson County Schools	290384	Welcome Elementary	Piedmont-Triad	PK-05	D	Not Met
Lexington City Schools	291332	Lexington Middle School	Piedmont-Triad	06-08	D	Not Met
Thomasville City Schools	292316	Liberty Drive Elementary	Piedmont-Triad	04-05	D	Met
Thomasville City Schools	292318	Thomasville Primary	Piedmont-Triad	PK-03	D	Met
Thomasville City Schools	292324	Thomasville High	Piedmont-Triad	09-12	D	Not Met
Davie County Schools	300326	Pinebrook Elementary	Piedmont-Triad	PK-05	D	Not Met
Davie County Schools	300330	South Davie Middle	Piedmont-Triad	06-08	D	Not Met
Duplin County Schools	310304	B F Grady Elementary	Southeast	PK-08	D	Met
Duplin County Schools	310308	Beulaville Elementary	Southeast	PK-08	D	Met
Duplin County Schools	310336	Warsaw Elementary	Southeast	PK-08	D	Met
Duplin County Schools	310352	James Kenan High	Southeast	09-12	D	Not Met
Duplin County Schools	310356	Kenansville Elementary	Southeast	0K-08	D	Not Met
Duplin County Schools	310360	North Duplin Elementary	Southeast	PK-06	D	Met
Duplin County Schools	310384	Rose Hill-Magnolia Elementary	Southeast	PK-08	F	Met
Duplin County Schools	310388	Wallace Elementary	Southeast	PK-08	F	Met
Duplin County Schools	310392	Wallace-Rose Hill High	Southeast	09-12	D	Not Met

Durham Public Schools	320304	Bethesda Elementary	North Central	PK-05	D	Met
Durham Public Schools	320315	Eno Valley Elementary	North Central	PK-05	D	Met
Durham Public Schools	320327	Hope Valley Elementary	North Central	0K-05	D	Met
Durham Public Schools	320332	Forest View Elementary	North Central	0K-05	D	Not Met
Durham Public Schools	320339	Lakewood Elementary	North Central	PK-05	D	Met
Durham Public Schools	320343	Lucas Middle	North Central	06-08	D	Met
Durham Public Schools	320344	Fayetteville Street Elementary	North Central	PK-05	D	Met
Durham Public Schools	320346	Lowe's Grove Middle	North Central	06-08	D	Met
Durham Public Schools	320355	Neal Middle	North Central	06-08	F	Met
Durham Public Schools	320356	Northern High	North Central	09-12	D	Not Met
Durham Public Schools	320362	Parkwood Elementary	North Central	PK-05	D	Met
Durham Public Schools	320368	Southern School of Energy and Sustainabi	North Central	09-12	D	Not Met
Durham Public Schools	320374	C C Spaulding Elementary	North Central	PK-05	F	Not Met
Durham Public Schools	320400	Y E Smith Elementary	North Central	PK-05	F	Met
Durham Public Schools	320401	Ignite Online Academy	North Central	0K-12	D	Met
Edgecombe County Public School	330304	G W Bulluck Elementary	North Central	PK-05	F	Not Met
Edgecombe County Public School	330328	North Edgecombe High	North Central	09-12	D	Met
Edgecombe County Public School	330332	Phillips Middle	North Central	06-08	D	Met
Edgecombe County Public School	330334	Princeville Elementary	North Central	PK-05	D	Met
Edgecombe County Public School	330340	South Edgecombe Middle	North Central	06-08	D	Met
Edgecombe County Public School	330344	W A Pattillo Middle	North Central	06-08	F	Not Met
Edgecombe County Public School	330358	Tarboro High	North Central	09-12	D	Met
Forsyth County Schools	340314	Bolton Elementary	Piedmont-Triad	PK-05	D	Met
Forsyth County Schools	340366	East Forsyth Middle School	Piedmont-Triad	06-08	F	Not Met
Forsyth County Schools	340372	Flat Rock Middle	Piedmont-Triad	06-08	F	Not Met
Forsyth County Schools	340376	Forest Park Elementary	Piedmont-Triad	PK-05	F	Not Met
Forsyth County Schools	340380	Gibson Elementary	Piedmont-Triad	PK-05	F	Met
Forsyth County Schools	340382	Robert B Glenn High School	Piedmont-Triad	09-12	D	Not Met
Forsyth County Schools	340384	Griffith Elementary	Piedmont-Triad	PK-05	D	Not Met
Forsyth County Schools	340390	Hall-Woodward Elementary	Piedmont-Triad	PK-05	F	Met
Forsyth County Schools	340398	Virtual Academy	Piedmont-Triad	PK-12	D	Met
Forsyth County Schools	340426	Kimmel Farm Elementary	Piedmont-Triad	PK-05	D	Not Met
Forsyth County Schools	340428	Konnoak Elementary	Piedmont-Triad	PK-05	D	Met
Forsyth County Schools	340430	Diggs-Latham Elementary	Piedmont-Triad	PK-05	D	Met
Forsyth County Schools	340448	Mineral Springs Elementary	Piedmont-Triad	PK-05	F	Not Met
Forsyth County Schools	340452	Mineral Springs Middle	Piedmont-Triad	06-08	F	Not Met
Forsyth County Schools	340460	North Forsyth High	Piedmont-Triad	09-12	D	Not Met
Forsyth County Schools	340462	North Hills Elementary	Piedmont-Triad	PK-05	F	Met
Forsyth County Schools	340464	Northwest Middle	Piedmont-Triad	06-08	F	Not Met
Forsyth County Schools	340476	Old Town Elementary	Piedmont-Triad	PK-05	D	Met
Forsyth County Schools	340480	Paisley IB Magnet School	Piedmont-Triad	06-10	F	Not Met
Forsyth County Schools	340486	Parkland High	Piedmont-Triad	09-12	D	Not Met
Forsyth County Schools	340488	J F Kennedy High	Piedmont-Triad	06-12	D	Not Met
Forsyth County Schools	340492	Philo-Hill Magnet Academy	Piedmont-Triad	06-08	F	Not Met

Forsyth County Schools	340514	Smith Farm Elementary	Piedmont-Triad	PK-05	D	Met
Forsyth County Schools	340516	Southeast Middle	Piedmont-Triad	06-08	F	Not Met
Forsyth County Schools	340520	South Fork Elementary	Piedmont-Triad	PK-05	D	Met
Forsyth County Schools	340544	Walkertown Middle	Piedmont-Triad	06-08	D	Met
Forsyth County Schools	340548	Ward Elementary	Piedmont-Triad	PK-05	D	Met
Forsyth County Schools	340564	Wiley Magnet Middle	Piedmont-Triad	06-08	F	Not Met
Forsyth County Schools	340568	Winston-Salem Preparatory Acad	Piedmont-Triad	06-12	F	Not Met
Franklin County Schools	350310	Bunn Middle	North Central	06-08	D	Not Met
Franklin County Schools	350312	Cedar Creek Middle	North Central	06-08	D	Not Met
Franklin County Schools	350318	Franklinton Elementary	North Central	PK-05	D	Met
Franklin County Schools	350324	Franklinton Middle	North Central	06-08	D	Met
Franklin County Schools	350332	Louisburg Elementary	North Central	PK-05	D	Met
Franklin County Schools	350338	Terrell Lane Middle	North Central	06-08	D	Met
Gaston County Schools	360332	Bessemer City Central Elem	Southwest	03-05	F	Not Met
Gaston County Schools	360339	W B Beam Intermediate School	Southwest	04-05	D	Not Met
Gaston County Schools	360340	Brookside Elementary	Southwest	PK-05	D	Met
Gaston County Schools	360352	Chapel Grove Elementary	Southwest	PK-05	D	Not Met
Gaston County Schools	360392	Edward D Sadler Jr Elementary School	Southwest	PK-05	F	Met
Gaston County Schools	360400	Gardner Park Elementary	Southwest	PK-05	D	Met
Gaston County Schools	360408	W P Grier Middle School	Southwest	06-08	F	Not Met
Gaston County Schools	360426	Holbrook Middle	Southwest	06-08	D	Met
Gaston County Schools	360428	Hunter Huss High	Southwest	09-12	D	Not Met
Gaston County Schools	360438	Lingerfeldt Elementary	Southwest	PK-05	F	Not Met
Gaston County Schools	360480	Pleasant Ridge Elementary	Southwest	PK-05	D	Not Met
Gaston County Schools	360488	Robinson Elementary	Southwest	PK-05	D	Met
Gaston County Schools	360490	Sherwood Elementary	Southwest	PK-05	D	Not Met
Gaston County Schools	360492	H H Beam Elementary	Southwest	PK-05	F	Met
Gaston County Schools	360504	Tryon Elementary	Southwest	PK-05	D	Met
Gaston County Schools	360514	W C Friday Middle School	Southwest	06-08	D	Not Met
Gaston County Schools	360520	Woodhill Elementary	Southwest	PK-05	F	Met
Gates County Schools	370308	Central Middle School	Northeast	06-08	D	Met
Graham County Schools	380306	Robbinsville Elementary	Western	PK-05	D	Met
Graham County Schools	380310	Robbinsville Middle	Western	06-08	D	Met
Granville County Schools	390309	Butner-Stem Middle	North Central	06-08	D	Not Met
Granville County Schools	390316	Creedmoor Elementary	North Central	PK-05	F	Not Met
Granville County Schools	390320	G. C. Hawley Middle	North Central	06-08	D	Not Met
Granville County Schools	390324	J. F. Webb High	North Central	09-12	D	Not Met
Granville County Schools	390333	Mount Energy Elementary	North Central	PK-05	D	Not Met
Granville County Schools	390334	Northern Granville Middle	North Central	06-08	D	Met
Granville County Schools	390360	Stovall-Shaw Elementary	North Central	PK-05	D	Met
Granville County Schools	390364	West Oxford Elementary	North Central	PK-05	F	Not Met
Greene County Schools	400312	Greene County Middle	Southeast	06-08	D	Not Met
Greene County Schools	400318	Greene County Intermediate	Southeast	04-05	D	Met
Greene County Schools	400332	West Greene Elementary	Southeast	02-03	D	Met

Guilford County Schools	410302	Guilford eLearning University Prep	Piedmont-Triad	0K-08	D	Met
Guilford County Schools	410310	Allen Jay Elementary	Piedmont-Triad	PK-05	D	Met
Guilford County Schools	410313	Southern Guilford Middle	Piedmont-Triad	06-08	F	Not Met
Guilford County Schools	410325	Swann Middle School	Piedmont-Triad	06-08	D	Not Met
Guilford County Schools	410328	Bessemer Elementary	Piedmont-Triad	PK-05	D	Met
Guilford County Schools	410331	Bluford Elementary	Piedmont-Triad	0K-05	D	Not Met
Guilford County Schools	410334	Brightwood Elementary	Piedmont-Triad	PK-05	D	Met
Guilford County Schools	410349	Cesar Cone Elementary	Piedmont-Triad	PK-05	F	Met
Guilford County Schools	410355	James B Dudley High	Piedmont-Triad	09-12	D	Not Met
Guilford County Schools	410358	Eastern Guilford High	Piedmont-Triad	09-12	D	Not Met
Guilford County Schools	410364	Fairview Elementary	Piedmont-Triad	PK-05	D	Met
Guilford County Schools	410366	Waldo C Falkener Sr Elementary	Piedmont-Triad	PK-05	F	Met
Guilford County Schools	410367	Ferndale Middle	Piedmont-Triad	06-08	F	Met
Guilford County Schools	410373	Julius I Foust Elementary	Piedmont-Triad	PK-05	D	Met
Guilford County Schools	410376	Cyrus P Frazier Elementary	Piedmont-Triad	PK-05	D	Not Met
Guilford County Schools	410385	Gillespie Park Elementary	Piedmont-Triad	PK-05	F	Met
Guilford County Schools	410391	Penn-Griffin Schools	Piedmont-Triad	06-12	D	Met
Guilford County Schools	410397	Western Guilford Middle	Piedmont-Triad	06-08	D	Met
Guilford County Schools	410400	Guilford Elementary	Piedmont-Triad	PK-05	D	Met
Guilford County Schools	410406	High Point Central High	Piedmont-Triad	09-12	D	Not Met
Guilford County Schools	410409	Hunter Elementary	Piedmont-Triad	PK-05	D	Met
Guilford County Schools	410415	Jackson Middle	Piedmont-Triad	06-08	D	Met
Guilford County Schools	410421	Jamestown Middle	Piedmont-Triad	06-08	D	Not Met
Guilford County Schools	410427	Johnson Street Global Studies	Piedmont-Triad	0K-08	F	Not Met
Guilford County Schools	410436	James Y Joyner Elementary	Piedmont-Triad	PK-05	D	Not Met
Guilford County Schools	410442	Kiser Middle	Piedmont-Triad	06-08	D	Not Met
Guilford County Schools	410454	Madison Elementary	Piedmont-Triad	0K-05	D	Not Met
Guilford County Schools	410460	Eastern Guilford Middle	Piedmont-Triad	06-08	F	Not Met
Guilford County Schools	410461	McLeansville Elementary	Piedmont-Triad	PK-05	D	Met
Guilford County Schools	410462	Ronald E. McNair Elementary	Piedmont-Triad	PK-05	D	Met
Guilford County Schools	410469	Montlieu Academy of Technology	Piedmont-Triad	PK-05	D	Not Met
Guilford County Schools	410478	Murphey Traditional Academy	Piedmont-Triad	0K-05	D	Met
Guilford County Schools	410484	Northeast Guilford High	Piedmont-Triad	09-12	D	Not Met
Guilford County Schools	410487	Northeast Guilford Middle	Piedmont-Triad	06-08	F	Met
Guilford County Schools	410496	Northwood Elementary	Piedmont-Triad	PK-05	D	Met
Guilford County Schools	410499	Oak Hill Elementary	Piedmont-Triad	PK-05	D	Not Met
Guilford County Schools	410505	Oak View Elementary	Piedmont-Triad	PK-05	D	Met
Guilford County Schools	410511	Parkview Village Elementary	Piedmont-Triad	PK-05	D	Met
Guilford County Schools	410514	Clara J Peck Elementary	Piedmont-Triad	PK-05	D	Met
Guilford County Schools	410530	Reedy Fork Elementary	Piedmont-Triad	PK-05	D	Not Met
Guilford County Schools	410532	Rankin Elementary	Piedmont-Triad	PK-05	F	Not Met
Guilford County Schools	410535	Sedalia Elementary	Piedmont-Triad	PK-05	D	Not Met
Guilford County Schools	410538	Sedgefield Elementary	Piedmont-Triad	PK-05	F	Not Met
Guilford County Schools	410542	George C Simkins Jr Elementary	Piedmont-Triad	PK-05	F	Not Met

Guilford County Schools	410544	Ben L. Smith High School	Piedmont-Triad	09-12	D	Met
Guilford County Schools	410565	Southwest Guilford Middle	Piedmont-Triad	06-08	D	Not Met
Guilford County Schools	410577	Sumner Elementary	Piedmont-Triad	0K-05	D	Not Met
Guilford County Schools	410578	Triangle Lake Montessori Elem	Piedmont-Triad	PK-05	D	Met
Guilford County Schools	410580	Union Hill Elementary	Piedmont-Triad	PK-05	D	Met
Guilford County Schools	410592	Welborn Middle	Piedmont-Triad	06-08	F	Not Met
Guilford County Schools	410598	Wiley Accel/Enrichment	Piedmont-Triad	PK-05	F	Not Met
Halifax County Schools	420304	Aurelian Springs Institute of Global Lea	Northeast	PK-05	D	Met
Halifax County Schools	420316	Scotland Neck Elementary Leadership Acad	Northeast	PK-05	F	Not Met
Halifax County Schools	420324	Enfield Middle S.T.E.A.M. Academy	Northeast	06-08	F	Met
Halifax County Schools	420328	Everetts Elementary S.T.E.M. Academy	Northeast	PK-05	F	Met
Halifax County Schools	420336	Hollister Elementary Leadership Academy	Northeast	PK-05	F	Met
Halifax County Schools	420340	Inborden Elementary S.T.E.A.M. Academy	Northeast	PK-05	F	Not Met
Halifax County Schools	420346	Northwest Halifax Collegiate and Technic	Northeast	09-12	D	Not Met
Halifax County Schools	420348	Pittman Elementary Leadership Academy	Northeast	PK-05	F	Met
Halifax County Schools	420358	Southeast Halifax Collegiate Prep Academ	Northeast	09-12	D	Met
Halifax County Schools	420376	William R Davie Middle S.T.E.M. Academy	Northeast	06-08	F	Not Met
Roanoke Rapids City Schools	421304	Belmont Elementary School	Northeast	PK-05	D	Met
Roanoke Rapids City Schools	421316	Roanoke Rapids High School	Northeast	09-12	D	Not Met
Weldon City Schools	422314	Weldon Elementary Global Academy	Northeast	PK-04	F	Met
Weldon City Schools	422315	Weldon STEM High School Career Academies	Northeast	09-12	D	Met
Weldon City Schools	422318	Weldon Middle	Northeast	05-08	D	Met
Harnett County Schools	430308	Angier Elementary	North Central	PK-05	D	Not Met
Harnett County Schools	430316	Boone Trail Elementary	North Central	PK-05	D	Met
Harnett County Schools	430320	Buies Creek Elementary	North Central	0K-05	D	Not Met
Harnett County Schools	430328	Coats Elementary	North Central	PK-05	D	Met
Harnett County Schools	430330	Coats-Erwin Middle	North Central	06-08	F	Not Met
Harnett County Schools	430336	Erwin Elementary	North Central	PK-05	D	Met
Harnett County Schools	430344	Dunn Elementary	North Central	PK-05	F	Not Met
Harnett County Schools	430346	Harnett Central High	North Central	09-12	D	Not Met
Harnett County Schools	430347	Harnett Central Middle	North Central	06-08	D	Not Met
Harnett County Schools	430348	Johnsonville Elementary	North Central	PK-05	D	Met
Harnett County Schools	430349	Highland Elementary	North Central	0K-05	D	Met
Harnett County Schools	430351	Highland Middle	North Central	06-08	D	Met
Harnett County Schools	430358	Lillington-Shawtown Elementary	North Central	PK-05	D	Met
Harnett County Schools	430369	Overhills Elementary	North Central	PK-05	D	Not Met
Harnett County Schools	430376	South Harnett Elementary	North Central	03-05	D	Met
Harnett County Schools	430385	Harnett Virtual Academy	North Central	0K-12	D	Not Met
Henderson County Schools	450301	Apple Valley Middle	Western	06-08	D	Met

Henderson County Schools	450308	Dana Elementary	Western	PK-05	D	Not Met
Henderson County Schools	450322	Edneyville Elementary	Western	PK-05	D	Not Met
Henderson County Schools	450328	Flat Rock Middle	Western	06-08	D	Met
Henderson County Schools	450336	Hillandale Elementary	Western	PK-05	D	Not Met
Henderson County Schools	450346	Upward Elementary	Western	PK-05	D	Met
Hertford County Schools	460308	Ahoskie Elementary	Northeast	04-05	D	Met
Hertford County Schools	460312	Bearfield Primary	Northeast	PK-03	F	Not Met
Hertford County Schools	460318	Hertford County Middle	Northeast	06-08	F	Not Met
Hertford County Schools	460320	Hertford County High	Northeast	09-12	D	Not Met
Hoke County Schools	470328	Scurlock Elementary	Sandhills	PK-05	D	Met
Hoke County Schools	470330	Hawk Eye Elementary	Sandhills	PK-05	D	Met
Hoke County Schools	470332	East Hoke Middle	Sandhills	06-08	D	Not Met
Hoke County Schools	470346	Upchurch Elementary	Sandhills	PK-05	D	Not Met
Hoke County Schools	470441	Sandy Grove Elementary	Sandhills	PK-05	D	Not Met
Hoke County Schools	470442	Sandy Grove Middle	Sandhills	06-08	D	Met
Hyde County Schools	480306	Mattamuskeet School	Northeast	PK-12	D	Not Met
Iredell-Statesville Schools	490319	Cloverleaf Elementary	Southwest	PK-05	D	Met
Iredell-Statesville Schools	490326	East Iredell Elementary	Southwest	PK-05	D	Not Met
Iredell-Statesville Schools	490327	East Iredell Middle	Southwest	06-08	F	Not Met
Iredell-Statesville Schools	490345	N B Mills Elementary	Southwest	PK-05	F	Not Met
Iredell-Statesville Schools	490349	North Iredell Middle	Southwest	06-08	D	Not Met
Iredell-Statesville Schools	490352	Third Creek Middle	Southwest	06-08	F	Not Met
Iredell-Statesville Schools	490354	Statesville High	Southwest	09-12	D	Not Met
Iredell-Statesville Schools	490363	Third Creek Elementary	Southwest	PK-05	D	Met
Iredell-Statesville Schools	490366	Troutman Middle	Southwest	06-08	D	Not Met
Iredell-Statesville Schools	490380	West Iredell High	Southwest	09-12	D	Not Met
Iredell-Statesville Schools	490384	West Iredell Middle	Southwest	06-08	D	Not Met
Mooresville City Schools	491308	Mooresville Middle	Southwest	07-08	D	Not Met
Jackson County Schools	500302	Blue Ridge Early College	Western	07-13	D	Met
Jackson County Schools	500304	Cullowhee Valley School	Western	PK-08	D	Met
Jackson County Schools	500332	Scotts Creek Elementary	Western	PK-08	D	Met
Jackson County Schools	500337	Smokey Mountain Elementary	Western	PK-08	F	Met
Johnston County Schools	510310	Benson Middle	North Central	05-08	D	Met
Johnston County Schools	510365	JCPS Virtual Academy	North Central	0K-12	D	Not Met
Johnston County Schools	510379	Riverwood Middle	North Central	06-08	D	Not Met
Johnston County Schools	510388	Selma Elementary	North Central	PK-05	D	Met
Johnston County Schools	510390	Selma Middle School	North Central	06-08	D	Met
Johnston County Schools	510404	South Smithfield Elementary	North Central	PK-05	D	Met
Jones County Schools	520336	Trenton Elementary	Southeast	PK-05	D	Met
Lee County Schools	530302	BT Bullock Elementary	North Central	0K-05	D	Not Met
Lee County Schools	530308	Broadway Elementary	North Central	PK-05	D	Not Met
Lee County Schools	530314	East Lee Middle	North Central	06-08	D	Met
Lee County Schools	530356	West Lee Middle	North Central	06-08	F	Not Met
Lee County Schools	530360	WB Wicker Elementary	North Central	0K-05	D	Met

Lenoir County Public Schools	540308	Contentnea-Savannah School	Southeast	PK-08	D	Not Met
Lenoir County Public Schools	540312	E B Frink Middle	Southeast	06-08	D	Met
Lenoir County Public Schools	540315	Kinston High	Southeast	09-12	D	Not Met
Lenoir County Public Schools	540316	La Grange Elementary	Southeast	PK-05	D	Met
Lenoir County Public Schools	540324	North Lenoir High	Southeast	09-12	D	Not Met
Lenoir County Public Schools	540325	Northeast Elementary	Southeast	PK-05	F	Met
Lenoir County Public Schools	540326	Northwest Elementary	Southeast	0K-05	D	Met
Lenoir County Public Schools	540330	Rochelle Middle	Southeast	06-08	D	Met
Lenoir County Public Schools	540336	South Lenoir High	Southeast	09-12	D	Not Met
Lenoir County Public Schools	540338	Southeast Elementary	Southeast	PK-05	F	Not Met
Lenoir County Public Schools	540340	Southwood Elementary	Southeast	0K-05	D	Met
Lenoir County Public Schools	540344	Woodington Middle	Southeast	06-08	D	Met
Lincoln County Schools	550312	Battleground Elementary	Southwest	PK-05	F	Not Met
Macon County Schools	560331	Mountain View Intermediate	Western	05-06	D	Not Met
Martin County Schools	580312	E J Hayes Elementary	Northeast	03-05	D	Met
Martin County Schools	580337	South Creek Middle	Northeast	06-08	F	Met
Martin County Schools	580344	South Creek High	Northeast	09-12	D	Not Met
Martin County Schools	580368	Riverside High	Northeast	09-12	D	Not Met
Martin County Schools	580372	Riverside Middle	Northeast	06-08	F	Not Met
McDowell County Schools	590310	East McDowell Middle School	Northwest	06-08	D	Met
McDowell County Schools	590329	McDowell Virtual Academy	Northwest	06-12	D	Not Met
McDowell County Schools	590332	Nebo Elementary School	Northwest	PK-05	D	Not Met
McDowell County Schools	590344	Pleasant Gardens Elementary School	Northwest	PK-05	D	Met
Charlotte-Mecklenburg Schools	600300	Albemarle Road Elementary	Southwest	0K-05	D	Met
Charlotte-Mecklenburg Schools	600301	Albemarle Road Middle	Southwest	06-08	D	Met
Charlotte-Mecklenburg Schools	600303	Charlotte East Language Academy	Southwest	0K-08	D	Met
Charlotte-Mecklenburg Schools	600305	J. M. Alexander Middle	Southwest	06-08	F	Not Met
Charlotte-Mecklenburg Schools	600311	Ashley Park PreK-8 School	Southwest	PK-08	F	Met
Charlotte-Mecklenburg Schools	600317	Whitewater Middle	Southwest	06-08	D	Met
Charlotte-Mecklenburg Schools	600319	Berryhill School	Southwest	PK-08	F	Met
Charlotte-Mecklenburg Schools	600341	Cochrane Collegiate Academy	Southwest	06-12	F	Not Met
Charlotte-Mecklenburg Schools	600362	David Cox Road Elementary	Southwest	PK-05	D	Met
Charlotte-Mecklenburg Schools	600365	Devonshire Elementary	Southwest	0K-05	F	Not Met
Charlotte-Mecklenburg Schools	600366	Marie G Davis School	Southwest	0K-08	D	Met
Charlotte-Mecklenburg Schools	600369	Berewick Elementary	Southwest	PK-05	D	Not Met
Charlotte-Mecklenburg Schools	600374	Druid Hills Academy	Southwest	PK-08	F	Met
Charlotte-Mecklenburg Schools	600381	Eastway Middle	Southwest	06-08	F	Met
Charlotte-Mecklenburg Schools	600384	Elizabeth Traditional Elem	Southwest	0K-05	D	Not Met
Charlotte-Mecklenburg Schools	600397	Garinger High School	Southwest	09-12	D	Not Met
Charlotte-Mecklenburg Schools	600398	Greenway Park Elementary	Southwest	PK-05	D	Met
Charlotte-Mecklenburg Schools	600399	Alexander Graham Middle	Southwest	06-08	D	Not Met
Charlotte-Mecklenburg Schools	600405	Harding University High School	Southwest	09-12	D	Met
Charlotte-Mecklenburg Schools	600408	Lawrence Orr Elementary	Southwest	PK-05	D	Met
Charlotte-Mecklenburg Schools	600410	Hickory Grove Elementary	Southwest	PK-05	F	Met

Charlotte-Mecklenburg Schools	600416	Hornets Nest Elementary	Southwest	PK-05	F	Met
Charlotte-Mecklenburg Schools	600418	Croft Community School	Southwest	PK-05	D	Met
Charlotte-Mecklenburg Schools	600422	Huntingtowne Farms Elementary	Southwest	PK-05	D	Met
Charlotte-Mecklenburg Schools	600428	James Martin Middle	Southwest	06-08	F	Not Met
Charlotte-Mecklenburg Schools	600429	Gov's Village STEM (Upper)	Southwest	05-08	D	Met
Charlotte-Mecklenburg Schools	600434	Kennedy Middle	Southwest	06-08	D	Met
Charlotte-Mecklenburg Schools	600440	Lebanon Road Elementary	Southwest	PK-05	D	Met
Charlotte-Mecklenburg Schools	600446	Mallard Creek Elementary	Southwest	0K-05	D	Met
Charlotte-Mecklenburg Schools	600448	Martin Luther King, Jr Middle	Southwest	06-08	F	Not Met
Charlotte-Mecklenburg Schools	600450	McClintock Middle	Southwest	06-08	D	Met
Charlotte-Mecklenburg Schools	600462	Mountain Island Lake Academy	Southwest	PK-08	D	Not Met
Charlotte-Mecklenburg Schools	600463	River Oaks Academy	Southwest	PK-05	D	Met
Charlotte-Mecklenburg Schools	600468	Gov's Village STEM (Lower)	Southwest	PK-04	D	Met
Charlotte-Mecklenburg Schools	600478	J. H. Gunn Elementary	Southwest	0K-05	D	Not Met
Charlotte-Mecklenburg Schools	600479	Northeast Middle	Southwest	06-08	D	Met
Charlotte-Mecklenburg Schools	600481	Northridge Middle	Southwest	06-08	D	Met
Charlotte-Mecklenburg Schools	600483	South Pine Academy	Southwest	PK-05	D	Met
Charlotte-Mecklenburg Schools	600485	Oakdale Elementary	Southwest	0K-05	F	Not Met
Charlotte-Mecklenburg Schools	600489	Bruns Avenue Elementary	Southwest	PK-05	F	Met
Charlotte-Mecklenburg Schools	600499	Charlotte-Mecklenburg Virtual School	Southwest	04-12	D	Not Met
Charlotte-Mecklenburg Schools	600501	Pinewood Elementary	Southwest	PK-05	F	Met
Charlotte-Mecklenburg Schools	600514	Ranson Middle	Southwest	06-08	F	Not Met
Charlotte-Mecklenburg Schools	600517	Reid Park Academy	Southwest	PK-05	D	Met
Charlotte-Mecklenburg Schools	600518	Ridge Road Middle	Southwest	06-08	D	Met
Charlotte-Mecklenburg Schools	600521	Stoney Creek Elementary	Southwest	0K-05	D	Not Met
Charlotte-Mecklenburg Schools	600538	Southwest Middle School	Southwest	06-08	F	Not Met
Charlotte-Mecklenburg Schools	600546	Statesville Road Elementary	Southwest	PK-05	D	Met
Charlotte-Mecklenburg Schools	600553	Thomasboro Academy	Southwest	0K-08	F	Met
Charlotte-Mecklenburg Schools	600562	Tuckaseegee Elementary	Southwest	0K-05	D	Not Met
Charlotte-Mecklenburg Schools	600565	University Park Creative Arts	Southwest	0K-05	F	Met
Charlotte-Mecklenburg Schools	600566	University Meadows Elementary	Southwest	PK-05	F	Not Met
Charlotte-Mecklenburg Schools	600574	Walter G. Byers School	Southwest	PK-08	D	Met
Charlotte-Mecklenburg Schools	600579	West Mecklenburg High School	Southwest	09-12	D	Not Met
Charlotte-Mecklenburg Schools	600583	Wilson STEM Academy	Southwest	06-08	D	Met
Charlotte-Mecklenburg Schools	600592	Julius L. Chambers High School	Southwest	09-12	D	Not Met
Charlotte-Mecklenburg Schools	600593	Villa Heights Elementary	Southwest	0K-05	D	Met
Charlotte-Mecklenburg Schools	600595	Mint Hill Elementary School	Southwest	0K-04	D	Met
Mitchell County Schools	610326	Harris Middle	Northwest	06-08	D	Not Met
Montgomery County Schools	620312	Candor Elementary	Sandhills	PK-05	D	Met
Montgomery County Schools	620314	East Middle	Sandhills	06-08	D	Not Met
Montgomery County Schools	620318	Green Ridge Elementary	Sandhills	PK-05	D	Met
Montgomery County Schools	620324	Mount Gilead Elementary	Sandhills	PK-05	D	Met
Montgomery County Schools	620339	West Middle	Sandhills	06-08	D	Met
Moore County Schools	630308	Aberdeen Elementary	Sandhills	PK-05	D	Not Met



Moore County Schools	630317	Crain's Creek Middle	Sandhills	06-08	D	Not Met
Moore County Schools	630320	Elise Middle	Sandhills	06-08	D	Met
Moore County Schools	630348	Robbins Elementary	Sandhills	PK-05	D	Not Met
Nash County Public Schools	640306	Baskerville Elementary	North Central	0K-05	F	Not Met
Nash County Public Schools	640308	Benvenue Elementary	North Central	0K-05	D	Met
Nash County Public Schools	640320	Nash Central Middle	North Central	06-08	D	Not Met
Nash County Public Schools	640326	D S Johnson Elementary	North Central	03-05	F	Not Met
Nash County Public Schools	640328	Englewood Elementary	North Central	03-05	F	Not Met
Nash County Public Schools	640332	M B Hubbard Elementary	North Central	0K-05	D	Met
Nash County Public Schools	640335	Rocky Mount Middle	North Central	06-08	F	Met
Nash County Public Schools	640341	Nash Everywhere Digital Academy (NEDA)	North Central	01-12	D	Met
Nash County Public Schools	640348	Nashville Elementary	North Central	PK-05	D	Met
Nash County Public Schools	640361	Rocky Mount High	North Central	09-12	D	Not Met
Nash County Public Schools	640376	Spring Hope Elementary	North Central	PK-05	D	Met
New Hanover County Schools	650312	R Freeman Sch of Engineering	Southeast	PK-05	F	Met
New Hanover County Schools	650316	College Park Elementary	Southeast	0K-05	D	Met
New Hanover County Schools	650328	Forest Hills Global Elementary	Southeast	0K-05	F	Not Met
New Hanover County Schools	650355	Career Readiness Academy at Mosley PLC	Southeast	PK-12	D	Met
New Hanover County Schools	650384	A H Snipes Academy of Arts/Des	Southeast	0K-05	D	Met
New Hanover County Schools	650392	Williston Middle	Southeast	06-08	F	Not Met
New Hanover County Schools	650404	Wrightsboro Elementary	Southeast	PK-05	D	Met
Northampton County Schools	660306	Central Elementary	Northeast	PK-03	D	Met
Northampton County Schools	660308	Conway Middle	Northeast	04-08	D	Met
Northampton County Schools	660336	Northampton County High School	Northeast	09-12	D	Met
Onslow County Schools	670308	Blue Creek Elementary	Southeast	0K-05	D	Not Met
Onslow County Schools	670311	Clear View Elementary	Southeast	PK-05	D	Not Met
Onslow County Schools	670312	Clyde Erwin Elementary	Southeast	0K-05	D	Not Met
Onslow County Schools	670321	Hunters Creek Elementary	Southeast	PK-05	D	Not Met
Onslow County Schools	670322	Hunters Creek Middle	Southeast	06-08	D	Met
Onslow County Schools	670323	Jacksonville Commons Elem	Southeast	0K-05	F	Not Met
Onslow County Schools	670325	Jacksonville Commons Middle	Southeast	06-08	D	Not Met
Onslow County Schools	670329	Meadow View Elementary	Southeast	0K-05	D	Not Met
Onslow County Schools	670343	Southwest Elementary	Southeast	PK-05	D	Not Met
Onslow County Schools	670345	Southwest Middle	Southeast	06-08	D	Met
Onslow County Schools	670346	Summersill Elementary	Southeast	PK-05	D	Not Met
Onslow County Schools	670347	Stateside Elementary	Southeast	0K-05	D	Not Met
Onslow County Schools	670356	Trexler Middle	Southeast	06-08	D	Met
Onslow County Schools	670378	Onslow Virtual Elementary	Southeast	0K-05	D	Met
Orange County Schools	680304	A L Stanback Middle	North Central	06-08	D	Met
Orange County Schools	680312	Central Elementary	North Central	PK-05	D	Not Met
Orange County Schools	680327	Gravelly Hill Middle	North Central	06-08	D	Met
Orange County Schools	680328	Grady Brown Elementary	North Central	PK-05	D	Met
Orange County Schools	680330	New Hope Elementary	North Central	PK-05	D	Met
Pasquotank County Schools	700306	Central Elementary	Northeast	0K-05	D	Met

Pasquotank County Schools	700314	Northside Elementary	Northeast	0K-05	D	Not Met
Pasquotank County Schools	700316	J C Sawyer Elementary	Northeast	0K-05	D	Met
Pasquotank County Schools	700317	Northeastern High	Northeast	09-12	D	Not Met
Pasquotank County Schools	700318	Pasquotank Elementary	Northeast	0K-05	D	Met
Pasquotank County Schools	700319	Pasquotank County High	Northeast	09-12	D	Not Met
Pender County Schools	710312	C.F. Pope Elementary	Southeast	PK-05	D	Met
Pender County Schools	710316	Burgaw Middle	Southeast	06-08	F	Not Met
Pender County Schools	710320	Cape Fear Middle	Southeast	06-08	D	Met
Pender County Schools	710324	Malpass Corner Elementary	Southeast	PK-05	D	Met
Pender County Schools	710326	Pender High	Southeast	09-12	D	Not Met
Pender County Schools	710328	Penderlea Elementary	Southeast	PK-08	D	Met
Pender County Schools	710348	West Pender Middle	Southeast	06-08	D	Met
Person County Schools	730334	North Elementary	North Central	0K-05	F	Not Met
Person County Schools	730344	Northern Middle	North Central	06-08	D	Not Met
Person County Schools	730356	South Elementary	North Central	PK-05	D	Met
Pitt County Schools	740308	Ayden Middle	Northeast	06-08	D	Met
Pitt County Schools	740310	Belvoir Elementary	Northeast	PK-05	D	Not Met
Pitt County Schools	740320	Bethel Elementary	Northeast	PK-08	D	Not Met
Pitt County Schools	740324	C M Eppes Middle	Northeast	06-08	D	Not Met
Pitt County Schools	740330	Creekside Elementary	Northeast	PK-05	D	Not Met
Pitt County Schools	740334	Falkland Elementary	Northeast	PK-05	D	Met
Pitt County Schools	740337	E B Aycock Middle	Northeast	06-08	D	Met
Pitt County Schools	740338	Elmhurst Elementary	Northeast	0K-05	D	Met
Pitt County Schools	740340	Farmville Middle	Northeast	06-08	D	Met
Pitt County Schools	740352	Grifton	Northeast	PK-08	D	Not Met
Pitt County Schools	740368	Lakeforest Elementary	Northeast	PK-05	D	Met
Pitt County Schools	740375	Northwest Elementary	Northeast	PK-05	F	Not Met
Pitt County Schools	740376	Pactolus	Northeast	PK-08	D	Met
Pitt County Schools	740386	Sam D Bundy Elementary	Northeast	03-05	D	Met
Pitt County Schools	740390	South Greenville Elementary	Northeast	0K-05	D	Not Met
Pitt County Schools	740400	Wahl Coates Elementary	Northeast	PK-05	D	Not Met
Pitt County Schools	740402	Wellcome Middle	Northeast	06-08	F	Not Met
Randolph County Schools	760308	Trinity Middle School	Piedmont-Triad	06-08	D	Not Met
Randolph County Schools	760318	Eastern Randolph High School	Piedmont-Triad	09-12	D	Not Met
Randolph County Schools	760324	Franklinville Elementary School	Piedmont-Triad	0K-05	D	Not Met
Randolph County Schools	760332	Liberty Elementary School	Piedmont-Triad	PK-05	D	Met
Randolph County Schools	760338	Northeastern Randolph Middle School	Piedmont-Triad	06-08	D	Not Met
Randolph County Schools	760340	Ramseur Elementary School	Piedmont-Triad	PK-05	D	Not Met
Randolph County Schools	760344	Randleman Elementary School	Piedmont-Triad	0K-04	D	Not Met
Randolph County Schools	760352	Randleman Middle School	Piedmont-Triad	05-08	D	Not Met
Randolph County Schools	760357	Southeastern Randolph Middle School	Piedmont-Triad	06-08	F	Not Met
Randolph County Schools	760358	Southwestern Randolph High School	Piedmont-Triad	09-12	D	Not Met
Randolph County Schools	760376	Trinity Elementary School	Piedmont-Triad	0K-05	D	Not Met

Randolph County Schools	760382	Uwharrie Ridge Six-Twelve	Piedmont-Triad	06-12	F	Not Met
Asheboro City Schools	761312	Balfour Elementary	Piedmont-Triad	PK-05	D	Not Met
Asheboro City Schools	761321	Donna L Loflin Elementary	Piedmont-Triad	0K-05	D	Met
Asheboro City Schools	761332	Lindley Park Elementary	Piedmont-Triad	0K-05	D	Met
Asheboro City Schools	761336	North Asheboro Middle	Piedmont-Triad	06-08	D	Met
Richmond County Schools	770310	East Rockingham Elementary	Sandhills	0K-05	D	Not Met
Richmond County Schools	770360	Rockingham Middle	Sandhills	06-08	D	Met
Richmond County Schools	770368	West Rockingham Elementary	Sandhills	PK-05	D	Met
Richmond County Schools	770370	Washington Street Elementary	Sandhills	PK-05	D	Not Met
Robeson County Schools	780320	Deep Branch Elementary	Sandhills	PK-06	F	Met
Robeson County Schools	780325	Fairmont High	Sandhills	09-12	D	Not Met
Robeson County Schools	780326	Fairmont Middle	Sandhills	05-08	F	Not Met
Robeson County Schools	780328	Fairgrove Elementary School	Sandhills	PK-05	D	Met
Robeson County Schools	780330	L Gilbert Carroll	Sandhills	04-05	F	Not Met
Robeson County Schools	780336	Littlefield Middle	Sandhills	04-08	D	Not Met
Robeson County Schools	780340	Long Branch Elementary	Sandhills	PK-04	D	Met
Robeson County Schools	780352	Orrum Middle	Sandhills	05-08	D	Met
Robeson County Schools	780360	Parkton Elementary	Sandhills	PK-08	D	Met
Robeson County Schools	780364	Pembroke Elementary	Sandhills	PK-05	D	Met
Robeson County Schools	780368	Pembroke Middle	Sandhills	06-08	D	Met
Robeson County Schools	780374	Peterson Elementary	Sandhills	PK-04	F	Met
Robeson County Schools	780376	Piney Grove Elementary	Sandhills	PK-06	D	Met
Robeson County Schools	780392	Rex-Rennert Elementary	Sandhills	PK-05	F	Met
Robeson County Schools	780393	Red Springs Middle	Sandhills	05-08	F	Not Met
Robeson County Schools	780394	Rosenwald Elementary	Sandhills	PK-04	F	Not Met
Robeson County Schools	780400	Saint Pauls Elementary	Sandhills	PK-04	D	Not Met
Robeson County Schools	780403	Saint Pauls Middle	Sandhills	05-08	F	Not Met
Robeson County Schools	780408	Southside Ashpole Elementary	Sandhills	PK-05	F	Not Met
Robeson County Schools	780410	Townsend Elementary	Sandhills	PK-05	F	Not Met
Robeson County Schools	780417	W H Knuckles	Sandhills	PK-03	F	Met
Robeson County Schools	780421	South Robeson Middle School	Sandhills	06-08	F	Met
Rockingham County Schools	790310	Central Elementary	Piedmont-Triad	PK-05	D	Not Met
Rockingham County Schools	790330	J E Holmes Middle	Piedmont-Triad	06-08	D	Not Met
Rockingham County Schools	790344	Leaksville-Spray Elementary	Piedmont-Triad	PK-05	D	Met
Rockingham County Schools	790350	Monroeton Elementary	Piedmont-Triad	PK-05	D	Not Met
Rockingham County Schools	790362	John W Dillard Academy	Piedmont-Triad	PK-05	D	Met
Rockingham County Schools	790366	Reidsville High	Piedmont-Triad	PK-12	D	Not Met
Rockingham County Schools	790374	Reidsville Middle	Piedmont-Triad	06-08	F	Not Met
Rockingham County Schools	790386	South End Elementary	Piedmont-Triad	PK-05	D	Met
Rockingham County Schools	790402	Williamsburg Elementary	Piedmont-Triad	PK-05	D	Not Met
Rowan-Salisbury Schools	800314	Erwin Middle	Southwest	06-08	D	Not Met
Rowan-Salisbury Schools	800315	Overton Elementary	Southwest	0K-05	F	Not Met
Rowan-Salisbury Schools	800316	China Grove Elementary	Southwest	PK-05	F	Not Met
Rowan-Salisbury Schools	800320	China Grove Middle	Southwest	06-08	D	Not Met

Rowan-Salisbury Schools	800328	Corriher Lipe Middle	Southwest	06-08	F	Not Met
Rowan-Salisbury Schools	800346	Koontz Elementary	Southwest	PK-05	F	Met
Rowan-Salisbury Schools	800347	Shive Elementary	Southwest	PK-05	D	Met
Rowan-Salisbury Schools	800356	Granite Quarry Elementary	Southwest	PK-05	F	Not Met
Rowan-Salisbury Schools	800358	Isenberg Elementary	Southwest	PK-05	F	Met
Rowan-Salisbury Schools	800359	Dole Elementary	Southwest	PK-05	F	Not Met
Rowan-Salisbury Schools	800360	Hurley Elementary	Southwest	PK-05	F	Met
Rowan-Salisbury Schools	800362	Knollwood Elementary	Southwest	PK-05	F	Not Met
Rowan-Salisbury Schools	800363	Knox Middle	Southwest	06-08	F	Not Met
Rowan-Salisbury Schools	800373	North Rowan Elementary	Southwest	PK-05	F	Not Met
Rowan-Salisbury Schools	800376	North Rowan High	Southwest	09-12	D	Not Met
Rowan-Salisbury Schools	800377	North Rowan Middle	Southwest	06-08	F	Met
Rowan-Salisbury Schools	800396	Salisbury High	Southwest	09-12	D	Not Met
Rowan-Salisbury Schools	800398	Southeast Middle	Southwest	06-08	F	Not Met
Rowan-Salisbury Schools	800400	South Rowan High	Southwest	09-12	D	Not Met
Rowan-Salisbury Schools	800406	West Rowan Elementary	Southwest	PK-05	D	Not Met
Rowan-Salisbury Schools	800408	West Rowan High	Southwest	09-12	D	Not Met
Rowan-Salisbury Schools	800410	West Rowan Middle	Southwest	06-08	F	Not Met
Rowan-Salisbury Schools	800500	Summit Virtual Academy	Southwest	0K-08	D	Met
Rutherford County Schools	810342	East Rutherford Middle School	Western	06-08	D	Not Met
Sampson County Schools	820347	Hobbtown Middle	Sandhills	06-08	D	Met
Sampson County Schools	820370	Union Middle	Sandhills	06-08	D	Met
Sampson County Schools	820372	Roseboro-Salemburg Middle	Sandhills	06-08	D	Not Met
Clinton City Schools	821320	Sampson Middle	Sandhills	06-08	D	Not Met
Scotland County Schools	830304	Carver Middle	Sandhills	06-08	F	Not Met
Scotland County Schools	830328	Laurel Hill Elementary	Sandhills	PK-05	D	Not Met
Scotland County Schools	830343	Scotland High School	Sandhills	09-12	D	Not Met
Scotland County Schools	830349	Spring Hill Middle	Sandhills	06-08	D	Not Met
Scotland County Schools	830352	South Johnson Elementary	Sandhills	PK-05	D	Met
Scotland County Schools	830360	Wagram Elementary	Sandhills	PK-05	D	Not Met
Scotland County Schools	830364	Sycamore Lane Elementary	Sandhills	03-05	F	Not Met
Stanly County Schools	840302	Albemarle High	Southwest	09-12	D	Not Met
Stanly County Schools	840303	Albemarle Middle	Southwest	06-08	F	Not Met
Stanly County Schools	840304	Aquadale Elementary	Southwest	PK-05	D	Not Met
Stanly County Schools	840310	Central Elementary	Southwest	0K-05	D	Not Met
Stanly County Schools	840312	Endy Elementary	Southwest	PK-05	D	Not Met
Stanly County Schools	840316	East Albemarle Elementary	Southwest	0K-05	F	Not Met
Stanly County Schools	840328	North Stanly Middle	Southwest	06-08	D	Not Met
Stanly County Schools	840336	Norwood Elementary	Southwest	0K-05	D	Met
Stanly County Schools	840358	South Stanly Middle	Southwest	06-08	D	Met
Stanly County Schools	840360	Stanfield Elementary	Southwest	0K-05	D	Not Met
Stanly County Schools	840366	Stanly County Virtual Education	Southwest	01-12	D	Not Met
Stokes County Schools	850336	Pine Hall Elementary School	Piedmont-Triad	0K-05	F	Not Met
Stokes County Schools	850350	Southeastern Stokes Middle School	Piedmont-Triad	06-08	D	Not Met

Stokes County Schools	850354	London Elementary School	Piedmont-Triad	0K-05	D	Not Met
Stokes County Schools	850356	Walnut Cove Elementary School	Piedmont-Triad	PK-05	D	Met
Surry County Schools	860306	Central Middle	Piedmont-Triad	06-08	D	Met
Tyrrell County Schools	890306	Columbia Middle	Northeast	06-08	D	Met
Union County Public Schools	900306	East Elementary	Southwest	PK-05	D	Met
Union County Public Schools	900308	East Union Middle	Southwest	06-08	D	Not Met
Union County Public Schools	900314	Monroe Middle	Southwest	06-08	F	Not Met
Union County Public Schools	900336	Monroe High	Southwest	09-12	D	Not Met
Union County Public Schools	900346	Parkwood Middle	Southwest	06-08	D	Not Met
Union County Public Schools	900362	Sun Valley Middle	Southwest	06-08	D	Not Met
Union County Public Schools	900370	Walter Bickett Elementary	Southwest	PK-05	D	Met
Vance County Schools	910308	Carver Elementary	North Central	PK-05	D	Met
Vance County Schools	910311	Clarke Elementary	North Central	PK-05	F	Not Met
Vance County Schools	910314	Dabney Elementary	North Central	PK-05	D	Met
Vance County Schools	910316	Vance County Middle School	North Central	06-08	F	Not Met
Vance County Schools	910346	E O Young Jr Elementary	North Central	PK-05	F	Met
Vance County Schools	910356	Pinkston Street Elementary	North Central	PK-05	D	Met
Vance County Schools	910360	E M Rollins Elementary	North Central	PK-05	D	Met
Vance County Schools	910369	Vance Virtual Village Academy	North Central	0K-12	F	Met
Vance County Schools	910370	Vance County High School	North Central	09-12	F	Not Met
Vance County Schools	910376	L B Yancey Elementary	North Central	PK-05	D	Not Met
Vance County Schools	910380	Zeb Vance Elementary	North Central	PK-05	D	Not Met
Wake County Schools	920320	Aversboro Elementary	North Central	PK-05	D	Met
Wake County Schools	920326	Baileywick Road Elementary	North Central	PK-05	D	Met
Wake County Schools	920329	Barwell Road Elementary	North Central	PK-05	D	Met
Wake County Schools	920332	Beaverdam Elementary	North Central	PK-05	F	Not Met
Wake County Schools	920336	Brentwood Elementary	North Central	PK-05	D	Met
Wake County Schools	920344	Brooks Elementary	North Central	PK-05	D	Not Met
Wake County Schools	920352	Bugg Elementary	North Central	PK-05	D	Met
Wake County Schools	920360	Carroll Middle	North Central	06-08	D	Met
Wake County Schools	920370	Centennial Campus Middle	North Central	06-08	D	Met
Wake County Schools	920393	Dillard Drive Elementary	North Central	PK-05	D	Met
Wake County Schools	920394	Dillard Drive Middle	North Central	06-08	D	Not Met
Wake County Schools	920398	Durant Road Elementary	North Central	PK-05	D	Not Met
Wake County Schools	920399	Durant Road Middle	North Central	06-08	D	Not Met
Wake County Schools	920403	East Garner Elementary	North Central	PK-05	D	Met
Wake County Schools	920404	East Garner Middle	North Central	06-08	F	Not Met
Wake County Schools	920408	East Millbrook Middle	North Central	06-08	D	Met
Wake County Schools	920410	Neuse River Middle	North Central	06-08	D	Met
Wake County Schools	920415	Fox Road Elementary	North Central	0K-05	D	Met
Wake County Schools	920440	Green Elementary	North Central	PK-05	D	Met
Wake County Schools	920446	Hodge Road Elementary	North Central	PK-05	D	Met
Wake County Schools	920464	Knightdale Elementary	North Central	PK-05	F	Not Met
Wake County Schools	920466	Knightdale High	North Central	09-12	D	Not Met

Wake County Schools	920496	Millbrook Elementary	North Central	PK-05	D	Met
Wake County Schools	920512	North Garner Middle	North Central	06-08	D	Met
Wake County Schools	920542	Reedy Creek Elementary	North Central	0K-05	D	Not Met
Wake County Schools	920545	Rolesville Middle	North Central	06-08	D	Not Met
Wake County Schools	920547	Rogers Lane Elementary	North Central	PK-05	D	Met
Wake County Schools	920549	River Bend Middle	North Central	06-08	D	Met
Wake County Schools	920560	Smith Elementary	North Central	PK-05	D	Not Met
Wake County Schools	920562	Southeast Raleigh High	North Central	09-12	D	Met
Wake County Schools	920563	Southeast Raleigh Elementary	North Central	PK-05	D	Met
Wake County Schools	920570	Timber Drive Elementary	North Central	PK-05	D	Not Met
Wake County Schools	920580	Vandora Springs Elementary	North Central	PK-05	D	Not Met
Wake County Schools	920592	Wake Forest Middle School	North Central	06-08	D	Not Met
Wake County Schools	920597	Wakelon Elementary	North Central	PK-05	D	Met
Wake County Schools	920599	Walnut Creek Elementary	North Central	PK-05	D	Met
Wake County Schools	920600	Wendell Elementary	North Central	0K-05	D	Not Met
Wake County Schools	920601	Wendell Middle	North Central	06-08	F	Not Met
Wake County Schools	920616	Wilburn Elementary	North Central	PK-05	D	Met
Wake County Schools	920618	Wildwood Forest Elementary	North Central	PK-05	D	Met
Wake County Schools	920632	Zebulon Elementary	North Central	PK-05	D	Not Met
Warren County Schools	930330	Mariam Boyd Elementary	North Central	PK-05	F	Not Met
Warren County Schools	930340	Northside Elementary	North Central	PK-05	F	Not Met
Warren County Schools	930348	Vaughan Elementary	North Central	PK-05	D	Met
Warren County Schools	930352	Warren County High	North Central	09-12	D	Not Met
Warren County Schools	930354	Warren County Middle	North Central	06-08	F	Met
Washington County Schools	940314	Pines Elementary	Northeast	PK-05	D	Met
Washington County Schools	940316	Washington County High	Northeast	09-12	F	Not Met
Washington County Schools	940328	Washington County Middle	Northeast	06-08	D	Met
Watauga County Schools	950324	Mabel Elementary	Northwest	PK-08	D	Met
Wayne County Public Schools	960312	Brogden Middle	Southeast	05-08	F	Not Met
Wayne County Public Schools	960314	Brogden Primary	Southeast	PK-04	F	Not Met
Wayne County Public Schools	960318	Carver Heights Elementary	Southeast	03-05	D	Met
Wayne County Public Schools	960326	Dillard Middle	Southeast	06-08	F	Met
Wayne County Public Schools	960329	Eastern Wayne Elementary	Southeast	PK-05	D	Met
Wayne County Public Schools	960330	Eastern Wayne High	Southeast	09-12	D	Not Met
Wayne County Public Schools	960331	Eastern Wayne Middle	Southeast	06-08	F	Not Met
Wayne County Public Schools	960334	Fremont STARS Elementary	Southeast	PK-05	D	Met
Wayne County Public Schools	960335	Goldsboro High	Southeast	09-12	F	Not Met
Wayne County Public Schools	960338	Grantham Middle	Southeast	05-08	F	Not Met
Wayne County Public Schools	960348	Mount Olive Middle	Southeast	05-08	D	Met
Wayne County Public Schools	960370	Rosewood Elementary	Southeast	PK-05	D	Met
Wayne County Public Schools	960380	Southern Wayne High	Southeast	09-12	D	Not Met
Wayne County Public Schools	960387	Spring Creek Middle	Southeast	05-08	D	Met
Wayne County Public Schools	960388	Tommy's Road Elementary	Southeast	PK-05	D	Not Met
Wayne County Public Schools	960450	Northeast Elementary	Southeast	PK-05	D	Not Met

Wilkes County Schools	970308	Boomer-Ferguson Elementary School	Northwest	PK-05	D	Met
Wilkes County Schools	970312	C C Wright Elementary School	Northwest	PK-05	D	Met
Wilkes County Schools	970368	Roaring River Elementary School	Northwest	PK-05	D	Met
Wilson County Schools	980308	B O Barnes Elementary	North Central	0K-05	D	Met
Wilson County Schools	980317	Charles H Darden Middle	North Central	06-08	F	Not Met
Wilson County Schools	980357	Vick Elementary	North Central	0K-05	D	Met
Yadkin County Schools	990312	East Bend Elementary	Piedmont-Triad	PK-05	D	Not Met
Lab Schools	34Z000	Appalachian Academy at Middle Fork	Piedmont-Triad	0K-05	F	Met
Lab Schools	65Z000	D.C. Virgo Preparatory Academy	Southeast	0K-08	F	Not Met
Lab Schools	79Z000	Moss Street Partnership School	Piedmont-Triad	0K-05	F	Met
Charter Schools	00A000	North Carolina Cyber Academy	Virtual	0K-12	D	Not Met
Charter Schools	09B000	Emereau Bladen	Sandhills	0K-08	D	Met
Charter Schools	13B000	Cabarrus Charter Academy	Southwest	0K-12	D	Met
Charter Schools	13C000	A.C.E. Academy	Southwest	0K-08	D	Not Met
Charter Schools	14B000	Oak Hill Charter School	Northwest	0K-07	F	Not Met
Charter Schools	24N000	Classical Charter Schools of Whiteville	Sandhills	0K-08	D	Met
Charter Schools	26C000	The Capitol Encore Academy	Sandhills	0K-10	D	Met
Charter Schools	32C000	Community School of Digital & Visual Art	North Central	0K-08	D	Met
Charter Schools	32D000	Kestrel Heights School	North Central	0K-08	D	Not Met
Charter Schools	32M000	Global Scholars Academy	North Central	0K-08	D	Met
Charter Schools	32R000	Excelsior Classical Academy	North Central	0K-11	D	Not Met
Charter Schools	32S000	KIPP Durham College Preparatory	North Central	0K-08	F	Met
Charter Schools	34D000	Carter G. Woodson School	Piedmont-Triad	0K-12	F	Met
Charter Schools	34F000	Forsyth Academy	Piedmont-Triad	0K-08	D	Met
Charter Schools	36F000	Ridgeview Charter School	Southwest	0K-07	F	Not Met
Charter Schools	41C000	Guilford Preparatory Academy	Piedmont-Triad	0K-08	D	Met
Charter Schools	41H000	College Prep and Leadership Academy	Piedmont-Triad	0K-12	D	Met
Charter Schools	41L000	Gate City Charter	Piedmont-Triad	0K-08	D	Met
Charter Schools	41M000	Next Generation Academy	Piedmont-Triad	0K-06	D	Met
Charter Schools	41N000	The Experiential School of Greensboro	Piedmont-Triad	0K-08	D	Not Met
Charter Schools	41R000	Summit Creek Academy	Piedmont-Triad	0K-06	D	Met
Charter Schools	42A000	KIPP Halifax College Preparatory	Northeast	0K-08	F	Not Met
Charter Schools	43D000	Achievement Charter Academy	North Central	0K-06	D	Met
Charter Schools	49B000	American Renaissance School	Southwest	0K-08	D	Not Met
Charter Schools	54A000	Children's Village Academy	Southeast	0K-08	D	Met
Charter Schools	60L000	KIPP Charlotte	Southwest	0K-08	F	Met
Charter Schools	60N000	Aristotle Preparatory Academy	Southwest	0K-08	F	Met
Charter Schools	60P000	Eastside STREAM Academy	Southwest	0K-08	F	Met
Charter Schools	60Q000	Invest Collegiate Transform	Southwest	0K-12	F	Not Met
Charter Schools	60Y000	Pioneer Springs Community School	Southwest	0K-11	D	Not Met
Charter Schools	60Z000	Niner University Elementary	Southwest	0K-04	F	Met

Charter Schools	61J000	Lakeside Charter Academy	Southwest	0K-08	D	Not Met
Charter Schools	61K000	United Community School	Southwest	0K-08	D	Met
Charter Schools	61M000	Charlotte Lab School	Southwest	0K-11	D	Not Met
Charter Schools	61N000	TMSA Charlotte	Southwest	0K-12	D	Not Met
Charter Schools	61P000	VERITAS Community School, CFA	Southwest	0K-08	F	Met
Charter Schools	61T000	Movement Charter School	Southwest	0K-07	D	Met
Charter Schools	61V000	Bonnie Cone Classical Academy	Southwest	0K-08	D	Not Met
Charter Schools	61Y000	Steele Creek Preparatory Academy	Southwest	0K-08	F	Not Met
Charter Schools	62A000	Tillery Charter Academy	Sandhills	0K-05	D	Met
Charter Schools	62J000	Southwest Charlotte STEM Academy	Southwest	0K-08	D	Not Met
Charter Schools	64A000	Rocky Mount Preparatory	North Central	0K-12	F	Not Met
Charter Schools	65B000	Wilmington Preparatory Academy	Southeast	0K-08	F	Met
Charter Schools	65C000	Classical Charter Schools of Wilmington	Southeast	0K-05	D	Met
Charter Schools	65H000	Wilmington School of the Arts	Southeast	0K-05	F	Not Met
Charter Schools	66A000	KIPP Gaston College Preparatory	Northeast	0K-12	D	Met
Charter Schools	67B000	Z.E.C.A. School of Arts and Technology	Southeast	0K-08	D	Met
Charter Schools	69A000	Arapahoe Charter School	Southeast	0K-12	D	Not Met
Charter Schools	76A000	Uwharrie Charter Academy	Piedmont-Triad	0K-12	D	Not Met
Charter Schools	79A000	Bethany Community School	Piedmont-Triad	06-12	D	Not Met
Charter Schools	86Z000	Appalachian State Univ Academy at Elkin	Piedmont-Triad	02-04	F	Not Met
Charter Schools	90D000	Monroe Charter Academy	Southwest	0K-06	F	Met
Charter Schools	90F000	Apprentice Academy High School	Southwest	08-12	D	Not Met
Charter Schools	92M000	PreEminent Charter	North Central	0K-08	D	Met
Charter Schools	93A000	Haliwa-Saponi Tribal School	North Central	0K-12	F	Not Met
Charter Schools	93J000	RISE Southeast Raleigh Charter	North Central	0K-08	F	Met
Charter Schools	93T000	Cardinal Charter Acad at Wendell Falls	North Central	0K-08	D	Not Met
Charter Schools	94A000	Pocosin Innovative Charter	Northeast	0K-08	D	Met
Charter Schools	96C000	Dillard Academy	Southeast	0K-08	D	Met
Charter Schools	96F000	Wayne Preparatory Academy	Southeast	0K-12	D	Met



### *2022-2023 Low-Performing Districts*

Low-performing districts are defined as districts that had greater than 50% of schools identified as low-performing. For the 2022-23 designations there are 25 low-performing districts.

Note: From 2018–19 through 2021–22 Southside Ashpole was part of the Innovative School District with a school code of 295300. Beginning with the 2022–23 school year, Southside Ashpole is transferred back to Public Schools of Robeson County using a school code of 780408.

<b>District Code</b>	<b>District Name</b>	<b>Number of Low-Performing Schools</b>	<b>Number of Schools with a School Performance Grade and Growth</b>	<b>Percent of Low-Performing Schools in District</b>
420	Halifax County Schools	10	11	90.9
830	Scotland County Schools	7	8	87.5
170	Caswell County Schools	5	6	83.3
940	Washington County Schools	3	4	75.0
540	Lenoir County Public Schools	12	16	75.0
422	Weldon City Schools	3	4	75.0
292	Thomasville City Schools	3	4	75.0
910	Vance County Schools	11	15	73.3
800	Rowan-Salisbury Schools	23	32	71.9
930	Warren County Schools	5	7	71.4
310	Duplin County Schools	9	13	69.2
460	Hertford County Schools	4	6	66.7
380	Graham County Schools	2	3	66.7
210	Edenton-Chowan Schools	2	3	66.7
040	Anson County Schools	6	9	66.7
430	Harnett County Schools	16	25	64.0
580	Martin County Schools	5	8	62.5
132	Kannapolis City Schools	5	8	62.5
240	Columbus County Schools	8	13	61.5
780	Robeson County Schools	22	36	61.1
660	Northampton County Schools	3	5	60.0
400	Greene County Schools	3	5	60.0
070	Beaufort County Schools	7	12	58.3
620	Montgomery County Schools	5	9	55.6
960	Wayne County Public Schools	16	30	53.3

### ***2022-2023 Recurring Low Performing Schools List***

A recurring low-performing school is identified as low-performing in any two of the last three years. The years used for this list are the 2018–19, 2021–22, and 2022–23 school years, as 2019–20 and 2020–21 do not have data. A low-performing school has a school performance grade of 'D' or 'F', and a growth status of 'Met' or 'Not Met'. For the purposes of this list, charter schools are not identified as recurring low-performing schools.

<b>District Name</b>	<b>School Code</b>	<b>School Name</b>	<b>State Board Region</b>	<b>Low Performing 2022–23</b>	<b>Low Performing 2021–22</b>	<b>Low Performing 2018–19</b>
Alamance-Burlington Schools	010310	Broadview Middle	Piedmont-Triad	Y	Y	Y
Alamance-Burlington Schools	010326	Eastlawn Elementary	Piedmont-Triad	Y		Y
Alamance-Burlington Schools	010346	B. Everett Jordan Elementary	Piedmont-Triad	Y	Y	Y
Alamance-Burlington Schools	010350	Graham Middle	Piedmont-Triad	Y	Y	Y
Alamance-Burlington Schools	010351	Grove Park Elementary	Piedmont-Triad	Y	Y	Y
Alamance-Burlington Schools	010354	Harvey R Newlin Elementary	Piedmont-Triad	Y	Y	Y
Alamance-Burlington Schools	010357	Haw River Elementary	Piedmont-Triad	Y	Y	Y
Alamance-Burlington Schools	010358	Hillcrest Elementary	Piedmont-Triad	Y	Y	Y
Alamance-Burlington Schools	010360	Hugh M Cummings High	Piedmont-Triad	Y	Y	
Alamance-Burlington Schools	010364	North Graham Elementary	Piedmont-Triad	Y	Y	Y
Alamance-Burlington Schools	010372	Pleasant Grove Elementary	Piedmont-Triad	Y		Y
Alamance-Burlington Schools	010380	South Graham Elementary	Piedmont-Triad	Y	Y	Y
Alamance-Burlington Schools	010392	Sylvan Elementary	Piedmont-Triad	Y		Y
Alamance-Burlington Schools	010394	Turrentine Middle	Piedmont-Triad	Y	Y	Y
Alamance-Burlington Schools	010450	Alamance Virtual School	Piedmont-Triad	Y	Y	
Alexander County Schools	020306	East Alexander Middle	Northwest	Y	Y	
Alexander County Schools	020316	Hiddenite Elementary	Northwest	Y	Y	
Alleghany County Schools	030320	Sparta Elementary	Northwest	Y	Y	
Anson County Schools	040306	Anson High School	Southwest	Y	Y	Y
Anson County Schools	040309	Anson Middle	Southwest	Y	Y	Y
Anson County Schools	040311	Wadesboro Primary	Southwest	Y	Y	
Anson County Schools	040316	Lilesville Elementary	Southwest	Y	Y	
Anson County Schools	040324	Morven Elementary	Southwest	Y	Y	Y
Anson County Schools	040330	Wadesboro Elementary	Southwest	Y	Y	Y
Avery County Schools	060318	Avery Middle	Northwest	Y	Y	
Avery County Schools	060328	Newland Elementary	Northwest	Y	Y	
Beaufort County Schools	070325	Chocowinity Middle	Northeast	Y	Y	
Beaufort County Schools	070327	John C Tayloe Elementary	Northeast	Y	Y	
Beaufort County Schools	070328	John Small Elementary	Northeast	Y	Y	
Beaufort County Schools	070329	Northeast Elementary	Northeast	Y	Y	
Beaufort County Schools	070338	P S Jones Middle	Northeast	Y	Y	

Beaufort County Schools	070340	S W Snowden Elementary	Northeast	Y	Y	
Beaufort County Schools	070342	Washington High	Northeast	Y	Y	
Bertie County Schools	080312	Bertie High	Northeast	Y	Y	Y
Bertie County Schools	080314	Bertie Middle	Northeast	Y	Y	Y
Bertie County Schools	080356	West Bertie Elementary	Northeast		Y	Y
Bladen County Schools	090318	Bladen Lakes Primary	Sandhills	Y	Y	Y
Bladen County Schools	090324	Dublin Primary	Sandhills		Y	Y
Bladen County Schools	090332	Elizabethtown Middle	Sandhills	Y	Y	Y
Bladen County Schools	090333	Elizabethtown Primary	Sandhills	Y	Y	
Bladen County Schools	090352	Plain View Primary	Sandhills	Y		Y
Bladen County Schools	090365	Tar Heel Middle	Sandhills	Y	Y	Y
Brunswick County Schools	100304	Bolivia Elementary	Southeast	Y	Y	
Brunswick County Schools	100316	Leland Middle	Southeast	Y	Y	Y
Brunswick County Schools	100332	Shallotte Middle	Southeast	Y	Y	
Brunswick County Schools	100338	Supply Elementary	Southeast	Y		Y
Brunswick County Schools	100341	Town Creek Middle	Southeast	Y	Y	
Buncombe County Schools	110338	Owen Middle	Western	Y	Y	
Buncombe County Schools	110342	Erwin Middle	Western	Y	Y	Y
Buncombe County Schools	110348	Emma Elementary	Western	Y	Y	
Buncombe County Schools	110372	Johnston Elementary	Western	Y	Y	Y
Buncombe County Schools	110384	Oakley Elementary	Western	Y	Y	Y
Buncombe County Schools	110401	Enka Middle	Western	Y	Y	
Buncombe County Schools	110410	Avery's Creek Elementary	Western		Y	Y
Buncombe County Schools	110412	Williams Elementary	Western	Y	Y	
Buncombe County Schools	110444	Woodfin Elementary	Western	Y	Y	
Buncombe County Schools	110451	Eblen Intermediate	Western	Y	Y	
Asheville City Schools	111304	Hall Fletcher Elementary	Western	Y	Y	
Burke County Schools	120316	Forest Hill Elementary	Northwest	Y	Y	
Burke County Schools	120354	Mountain View Elementary	Northwest		Y	Y
Burke County Schools	120390	Walter R Johnson Middle	Northwest	Y	Y	
Cabarrus County Schools	130313	Concord Middle	Southwest	Y	Y	Y
Cabarrus County Schools	130329	Rocky River Elementary	Southwest	Y	Y	Y
Cabarrus County Schools	130340	Winecoff Elementary	Southwest		Y	Y
Cabarrus County Schools	130342	W M Irvin Elementary	Southwest	Y	Y	
Kannapolis City Schools	132304	A L Brown High	Southwest	Y	Y	
Kannapolis City Schools	132308	Forest Park Elementary	Southwest	Y	Y	
Kannapolis City Schools	132312	Fred L Wilson Elementary	Southwest	Y	Y	
Kannapolis City Schools	132314	GW Carver Elementary	Southwest		Y	Y
Kannapolis City Schools	132330	Kannapolis Middle	Southwest	Y	Y	Y
Kannapolis City Schools	132332	Shady Brook Elementary	Southwest	Y	Y	
Caldwell County Schools	140324	Gamewell Elementary	Northwest	Y	Y	

Caldwell County Schools	140332	Gamewell Middle	Northwest	Y	Y	
Caldwell County Schools	140344	Happy Valley Elementary	Northwest	Y	Y	
Caldwell County Schools	140360	Kings Creek Elementary	Northwest	Y	Y	
Caldwell County Schools	140368	William Lenoir Middle	Northwest	Y	Y	
Caldwell County Schools	140384	Sawmills Elementary	Northwest	Y	Y	
Caldwell County Schools	140396	Whitnel Elementary	Northwest	Y	Y	
Caswell County Schools	170316	Bartlett Yancey High	Piedmont-Triad	Y	Y	
Caswell County Schools	170338	N L Dillard Middle	Piedmont-Triad		Y	Y
Caswell County Schools	170339	Oakwood Elementary	Piedmont-Triad	Y	Y	
Caswell County Schools	170342	South Elementary	Piedmont-Triad	Y	Y	
Caswell County Schools	170344	Stoney Creek Elementary	Piedmont-Triad	Y		Y
Catawba County Schools	180343	Lyle Creek Elementary	Northwest	Y	Y	
Catawba County Schools	180364	River Bend Middle	Northwest	Y	Y	
Catawba County Schools	180372	Saint Stephens Elementary	Northwest	Y	Y	
Hickory City Schools	181316	Grandview Middle	Northwest	Y	Y	
Hickory City Schools	181344	Viewmont Elementary	Northwest	Y	Y	
Newton Conover City Schools	182324	South Newton Elementary	Northwest	Y	Y	
Chatham County Schools	190312	Chatham Middle	North Central	Y	Y	Y
Chatham County Schools	190350	Siler City Elementary	North Central	Y	Y	
Cherokee County Schools	200304	Andrews Elementary	Western	Y	Y	
Cleveland County Schools	230336	Elizabeth Elementary	Southwest	Y	Y	
Cleveland County Schools	230362	Shelby Middle	Southwest	Y	Y	
Cleveland County Schools	230368	Township Three Elementary	Southwest	Y	Y	
Cleveland County Schools	230376	Washington Elementary	Southwest	Y	Y	
Columbus County Schools	240308	Acme Delco Elementary	Sandhills	Y	Y	Y
Columbus County Schools	240332	Chadbourn Elementary	Sandhills	Y	Y	Y
Columbus County Schools	240334	East Columbus Junior-Senior High	Sandhills	Y	Y	
Columbus County Schools	240354	Hallsboro-Artesia Elementary	Sandhills	Y	Y	
Columbus County Schools	240372	Tabor City Elementary	Sandhills	Y	Y	Y
Columbus County Schools	240376	Tabor City Middle	Sandhills	Y	Y	Y
Craven County Schools	250320	Vanceboro-Farm Life Elementary	Southeast	Y		Y
Craven County Schools	250332	H J MacDonald Middle	Southeast	Y		Y
Craven County Schools	250344	Havelock Middle	Southeast	Y	Y	Y
Craven County Schools	250348	J T Barber Elementary	Southeast	Y	Y	Y
Craven County Schools	250360	Oaks Road Academy	Southeast	Y	Y	Y
Craven County Schools	250376	West Craven Middle	Southeast		Y	Y
Cumberland County Schools	260310	Loyd E Auman Elementary	Sandhills	Y		Y
Cumberland County Schools	260321	Douglas Byrd Middle	Sandhills	Y		Y
Cumberland County Schools	260322	Douglas Byrd High	Sandhills	Y	Y	Y
Cumberland County Schools	260326	Elizabeth M Cashwell Elementary	Sandhills	Y	Y	
Cumberland County Schools	260336	Anne Chesnutt Middle	Sandhills	Y		Y

Cumberland County Schools	260340	College Lakes Elementary	Sandhills	Y	Y	
Cumberland County Schools	260358	Luther Nick Jeralds Middle	Sandhills	Y	Y	Y
Cumberland County Schools	260361	Ferguson-Easley Elementary	Sandhills	Y		Y
Cumberland County Schools	260368	Hope Mills Middle	Sandhills		Y	Y
Cumberland County Schools	260370	Ed V Baldwin Elementary	Sandhills	Y		Y
Cumberland County Schools	260372	Lewis Chapel Middle	Sandhills	Y		Y
Cumberland County Schools	260386	Margaret Willis Elementary	Sandhills	Y	Y	Y
Cumberland County Schools	260400	Montclair Elementary	Sandhills	Y	Y	
Cumberland County Schools	260404	William H Owen Elementary	Sandhills	Y	Y	Y
Cumberland County Schools	260414	Benjamin J Martin Elementary	Sandhills	Y		Y
Cumberland County Schools	260425	South View Middle	Sandhills	Y	Y	Y
Cumberland County Schools	260428	Spring Lake Middle	Sandhills		Y	Y
Cumberland County Schools	260440	Sunnyside Elementary	Sandhills	Y	Y	Y
Cumberland County Schools	260461	Cumberland Academy K-5 Virtual School	Sandhills	Y	Y	
Currituck County Schools	270304	Central Elementary	Northeast	Y	Y	
Davidson County Schools	290322	E Lawson Brown Middle	Piedmont-Triad	Y	Y	
Davidson County Schools	290328	Fair Grove Elementary	Piedmont-Triad		Y	Y
Davidson County Schools	290364	Silver Valley Elementary	Piedmont-Triad	Y	Y	
Lexington City Schools	291332	Lexington Middle School	Piedmont-Triad	Y	Y	
Lexington City Schools	291352	Southwest Elementary Global Academy	Piedmont-Triad		Y	Y
Thomasville City Schools	292316	Liberty Drive Elementary	Piedmont-Triad	Y	Y	Y
Thomasville City Schools	292318	Thomasville Primary	Piedmont-Triad	Y	Y	
Thomasville City Schools	292324	Thomasville High	Piedmont-Triad	Y	Y	
Davie County Schools	300330	South Davie Middle	Piedmont-Triad	Y	Y	
Duplin County Schools	310304	B F Grady Elementary	Southeast	Y		Y
Duplin County Schools	310308	Beulaville Elementary	Southeast	Y	Y	
Duplin County Schools	310336	Warsaw Elementary	Southeast	Y	Y	Y
Duplin County Schools	310352	James Kenan High	Southeast	Y	Y	
Duplin County Schools	310384	Rose Hill-Magnolia Elementary	Southeast	Y	Y	
Duplin County Schools	310388	Wallace Elementary	Southeast	Y		Y
Duplin County Schools	310392	Wallace-Rose Hill High	Southeast	Y	Y	
Durham Public Schools	320304	Bethesda Elementary	North Central	Y		Y
Durham Public Schools	320332	Forest View Elementary	North Central	Y	Y	
Durham Public Schools	320339	Lakewood Elementary	North Central	Y	Y	
Durham Public Schools	320344	Fayetteville Street Elementary	North Central	Y		Y
Durham Public Schools	320346	Lowe's Grove Middle	North Central	Y		Y
Durham Public Schools	320355	Neal Middle	North Central	Y	Y	Y
Durham Public Schools	320356	Northern High	North Central	Y	Y	
Durham Public Schools	320362	Parkwood Elementary	North Central	Y	Y	Y
Durham Public Schools	320368	Southern School of Energy and Sustainabi	North Central	Y	Y	
Durham Public Schools	320374	C C Spaulding Elementary	North Central	Y	Y	Y

Durham Public Schools	320388	W G Pearson Elementary	North Central		Y	Y
Durham Public Schools	320400	Y E Smith Elementary	North Central	Y	Y	
Durham Public Schools	320401	Ignite Online Academy	North Central	Y	Y	
Edgecombe County Public School	330304	G W Bulluck Elementary	North Central	Y	Y	Y
Edgecombe County Public School	330312	Coker-Wimberly Elementary	North Central		Y	Y
Edgecombe County Public School	330328	North Edgecombe High	North Central	Y	Y	
Edgecombe County Public School	330332	Phillips Middle	North Central	Y		Y
Edgecombe County Public School	330334	Princeville Elementary	North Central	Y	Y	Y
Edgecombe County Public School	330340	South Edgecombe Middle	North Central	Y	Y	Y
Edgecombe County Public School	330344	W A Pattillo Middle	North Central	Y	Y	
Edgecombe County Public School	330354	Stocks Elementary	North Central		Y	Y
Edgecombe County Public School	330358	Tarboro High	North Central	Y	Y	Y
Forsyth County Schools	340308	Ashley Academy	Piedmont-Triad		Y	Y
Forsyth County Schools	340314	Bolton Elementary	Piedmont-Triad	Y	Y	Y
Forsyth County Schools	340366	East Forsyth Middle School	Piedmont-Triad	Y	Y	Y
Forsyth County Schools	340372	Flat Rock Middle	Piedmont-Triad	Y	Y	Y
Forsyth County Schools	340376	Forest Park Elementary	Piedmont-Triad	Y	Y	Y
Forsyth County Schools	340382	Robert B Glenn High School	Piedmont-Triad	Y	Y	
Forsyth County Schools	340384	Griffith Elementary	Piedmont-Triad	Y	Y	
Forsyth County Schools	340390	Hall-Woodward Elementary	Piedmont-Triad	Y	Y	Y
Forsyth County Schools	340398	Virtual Academy	Piedmont-Triad	Y	Y	
Forsyth County Schools	340424	Kimberley Park Elementary	Piedmont-Triad		Y	Y
Forsyth County Schools	340426	Kimmel Farm Elementary	Piedmont-Triad	Y	Y	
Forsyth County Schools	340430	Diggs-Latham Elementary	Piedmont-Triad	Y	Y	Y
Forsyth County Schools	340448	Mineral Springs Elementary	Piedmont-Triad	Y	Y	
Forsyth County Schools	340452	Mineral Springs Middle	Piedmont-Triad	Y	Y	Y
Forsyth County Schools	340453	Moore Magnet Elementary	Piedmont-Triad		Y	Y
Forsyth County Schools	340460	North Forsyth High	Piedmont-Triad	Y	Y	Y
Forsyth County Schools	340462	North Hills Elementary	Piedmont-Triad	Y	Y	
Forsyth County Schools	340464	Northwest Middle	Piedmont-Triad	Y	Y	
Forsyth County Schools	340476	Old Town Elementary	Piedmont-Triad	Y		Y
Forsyth County Schools	340480	Paisley IB Magnet School	Piedmont-Triad	Y	Y	
Forsyth County Schools	340486	Parkland High	Piedmont-Triad	Y	Y	Y
Forsyth County Schools	340488	J F Kennedy High	Piedmont-Triad	Y	Y	
Forsyth County Schools	340492	Philo-Hill Magnet Academy	Piedmont-Triad	Y	Y	Y
Forsyth County Schools	340514	Smith Farm Elementary	Piedmont-Triad	Y	Y	Y
Forsyth County Schools	340516	Southeast Middle	Piedmont-Triad	Y	Y	
Forsyth County Schools	340520	South Fork Elementary	Piedmont-Triad	Y	Y	
Forsyth County Schools	340530	Speas Elementary	Piedmont-Triad		Y	Y
Forsyth County Schools	340548	Ward Elementary	Piedmont-Triad	Y	Y	Y
Forsyth County Schools	340564	Wiley Magnet Middle	Piedmont-Triad	Y	Y	

Forsyth County Schools	340568	Winston-Salem Preparatory Acad	Piedmont-Triad	Y	Y	Y
Franklin County Schools	350310	Bunn Middle	North Central	Y	Y	
Franklin County Schools	350324	Franklinton Middle	North Central	Y	Y	
Gaston County Schools	360332	Bessemer City Central Elem	Southwest	Y	Y	Y
Gaston County Schools	360336	Bessemer City High	Southwest		Y	Y
Gaston County Schools	360339	W B Beam Intermediate School	Southwest	Y	Y	
Gaston County Schools	360340	Brookside Elementary	Southwest	Y		Y
Gaston County Schools	360352	Chapel Grove Elementary	Southwest	Y	Y	
Gaston County Schools	360392	Edward D Sadler Jr Elementary School	Southwest	Y	Y	Y
Gaston County Schools	360400	Gardner Park Elementary	Southwest	Y	Y	
Gaston County Schools	360408	W P Grier Middle School	Southwest	Y	Y	Y
Gaston County Schools	360426	Holbrook Middle	Southwest	Y	Y	
Gaston County Schools	360428	Hunter Huss High	Southwest	Y	Y	
Gaston County Schools	360438	Lingerfeldt Elementary	Southwest	Y	Y	Y
Gaston County Schools	360480	Pleasant Ridge Elementary	Southwest	Y	Y	Y
Gaston County Schools	360488	Robinson Elementary	Southwest	Y	Y	
Gaston County Schools	360490	Sherwood Elementary	Southwest	Y	Y	Y
Gaston County Schools	360492	H H Beam Elementary	Southwest	Y	Y	Y
Gaston County Schools	360504	Tryon Elementary	Southwest	Y	Y	
Gaston County Schools	360514	W C Friday Middle School	Southwest	Y	Y	
Gaston County Schools	360520	Woodhill Elementary	Southwest	Y	Y	Y
Gaston County Schools	360526	York Chester Middle	Southwest		Y	Y
Graham County Schools	380306	Robbinsville Elementary	Western	Y	Y	
Graham County Schools	380310	Robbinsville Middle	Western	Y	Y	
Granville County Schools	390309	Butner-Stem Middle	North Central	Y	Y	Y
Granville County Schools	390312	C. G. Credle Elementary	North Central		Y	Y
Granville County Schools	390316	Creedmoor Elementary	North Central	Y	Y	Y
Granville County Schools	390324	J. F. Webb High	North Central	Y	Y	
Granville County Schools	390333	Mount Energy Elementary	North Central	Y	Y	
Granville County Schools	390334	Northern Granville Middle	North Central	Y	Y	Y
Granville County Schools	390360	Stovall-Shaw Elementary	North Central	Y		Y
Granville County Schools	390364	West Oxford Elementary	North Central	Y	Y	Y
Greene County Schools	400312	Greene County Middle	Southeast	Y	Y	Y
Greene County Schools	400318	Greene County Intermediate	Southeast	Y	Y	
Greene County Schools	400332	West Greene Elementary	Southeast	Y	Y	Y
Guilford County Schools	410302	Guilford eLearning University Prep	Piedmont-Triad	Y	Y	
Guilford County Schools	410307	Edwin A Alderman Elementary	Piedmont-Triad		Y	Y
Guilford County Schools	410310	Allen Jay Elementary	Piedmont-Triad	Y	Y	Y
Guilford County Schools	410313	Southern Guilford Middle	Piedmont-Triad	Y	Y	Y
Guilford County Schools	410316	Allen Middle	Piedmont-Triad		Y	Y
Guilford County Schools	410325	Swann Middle School	Piedmont-Triad	Y	Y	Y

Guilford County Schools	410328	Bessemer Elementary	Piedmont-Triad	Y	Y	Y
Guilford County Schools	410331	Bluford Elementary	Piedmont-Triad	Y	Y	Y
Guilford County Schools	410334	Brightwood Elementary	Piedmont-Triad	Y	Y	Y
Guilford County Schools	410349	Cesar Cone Elementary	Piedmont-Triad	Y	Y	Y
Guilford County Schools	410355	James B Dudley High	Piedmont-Triad	Y	Y	
Guilford County Schools	410358	Eastern Guilford High	Piedmont-Triad	Y	Y	
Guilford County Schools	410364	Fairview Elementary	Piedmont-Triad	Y	Y	
Guilford County Schools	410366	Waldo C Falkener Sr Elementary	Piedmont-Triad	Y	Y	Y
Guilford County Schools	410367	Ferndale Middle	Piedmont-Triad	Y	Y	Y
Guilford County Schools	410373	Julius I Foust Elementary	Piedmont-Triad	Y		Y
Guilford County Schools	410376	Cyrus P Frazier Elementary	Piedmont-Triad	Y	Y	
Guilford County Schools	410385	Gillespie Park Elementary	Piedmont-Triad	Y	Y	Y
Guilford County Schools	410391	Penn-Griffin Schools	Piedmont-Triad	Y	Y	
Guilford County Schools	410397	Western Guilford Middle	Piedmont-Triad	Y	Y	Y
Guilford County Schools	410400	Guilford Elementary	Piedmont-Triad	Y	Y	
Guilford County Schools	410406	High Point Central High	Piedmont-Triad	Y	Y	
Guilford County Schools	410409	Hunter Elementary	Piedmont-Triad	Y	Y	
Guilford County Schools	410415	Jackson Middle	Piedmont-Triad	Y		Y
Guilford County Schools	410421	Jamestown Middle	Piedmont-Triad	Y	Y	
Guilford County Schools	410427	Johnson Street Global Studies	Piedmont-Triad	Y	Y	
Guilford County Schools	410436	James Y Joyner Elementary	Piedmont-Triad	Y	Y	
Guilford County Schools	410439	Kirkman Park Elementary	Piedmont-Triad		Y	Y
Guilford County Schools	410454	Madison Elementary	Piedmont-Triad	Y	Y	
Guilford County Schools	410460	Eastern Guilford Middle	Piedmont-Triad	Y	Y	Y
Guilford County Schools	410461	McLeansville Elementary	Piedmont-Triad	Y	Y	
Guilford County Schools	410462	Ronald E. McNair Elementary	Piedmont-Triad	Y	Y	Y
Guilford County Schools	410469	Montlieu Academy of Technology	Piedmont-Triad	Y	Y	Y
Guilford County Schools	410478	Murphey Traditional Academy	Piedmont-Triad	Y	Y	Y
Guilford County Schools	410484	Northeast Guilford High	Piedmont-Triad	Y	Y	
Guilford County Schools	410487	Northeast Guilford Middle	Piedmont-Triad	Y	Y	
Guilford County Schools	410496	Northwood Elementary	Piedmont-Triad	Y	Y	Y
Guilford County Schools	410499	Oak Hill Elementary	Piedmont-Triad	Y	Y	
Guilford County Schools	410505	Oak View Elementary	Piedmont-Triad	Y	Y	Y
Guilford County Schools	410511	Parkview Village Elementary	Piedmont-Triad	Y	Y	Y
Guilford County Schools	410514	Clara J Peck Elementary	Piedmont-Triad	Y	Y	Y
Guilford County Schools	410530	Reedy Fork Elementary	Piedmont-Triad	Y	Y	Y
Guilford County Schools	410532	Rankin Elementary	Piedmont-Triad	Y	Y	Y
Guilford County Schools	410535	Sedalia Elementary	Piedmont-Triad	Y	Y	
Guilford County Schools	410538	Sedgefield Elementary	Piedmont-Triad	Y	Y	Y
Guilford County Schools	410542	George C Simkins Jr Elementary	Piedmont-Triad	Y	Y	Y
Guilford County Schools	410544	Ben L. Smith High School	Piedmont-Triad	Y		Y



Guilford County Schools	410565	Southwest Guilford Middle	Piedmont-Triad	Y	Y	
Guilford County Schools	410577	Sumner Elementary	Piedmont-Triad	Y	Y	Y
Guilford County Schools	410578	Triangle Lake Montessori Elem	Piedmont-Triad	Y	Y	
Guilford County Schools	410580	Union Hill Elementary	Piedmont-Triad	Y	Y	
Guilford County Schools	410583	Vandalia Elementary	Piedmont-Triad		Y	Y
Guilford County Schools	410592	Welborn Middle	Piedmont-Triad	Y		Y
Guilford County Schools	410598	Wiley Accel/Enrichment	Piedmont-Triad	Y	Y	Y
Halifax County Schools	420316	Scotland Neck Elementary Leadership Acad	Northeast	Y		Y
Halifax County Schools	420324	Enfield Middle S.T.E.A.M. Academy	Northeast	Y	Y	Y
Halifax County Schools	420328	Everetts Elementary S.T.E.M. Academy	Northeast	Y	Y	Y
Halifax County Schools	420336	Hollister Elementary Leadership Academy	Northeast	Y	Y	
Halifax County Schools	420346	Northwest Halifax Collegiate and Technic	Northeast	Y	Y	
Halifax County Schools	420348	Pittman Elementary Leadership Academy	Northeast	Y	Y	
Halifax County Schools	420358	Southeast Halifax Collegiate Prep Academ	Northeast	Y	Y	Y
Halifax County Schools	420376	William R Davie Middle S.T.E.M. Academy	Northeast	Y	Y	Y
Roanoke Rapids City Schools	421304	Belmont Elementary School	Northeast	Y	Y	
Roanoke Rapids City Schools	421316	Roanoke Rapids High School	Northeast	Y	Y	
Weldon City Schools	422314	Weldon Elementary Global Academy	Northeast	Y	Y	Y
Weldon City Schools	422315	Weldon STEM High School Career Academies	Northeast	Y	Y	Y
Weldon City Schools	422318	Weldon Middle	Northeast	Y		Y
Harnett County Schools	430316	Boone Trail Elementary	North Central	Y	Y	Y
Harnett County Schools	430328	Coats Elementary	North Central	Y	Y	
Harnett County Schools	430336	Erwin Elementary	North Central	Y	Y	Y
Harnett County Schools	430344	Dunn Elementary	North Central	Y	Y	Y
Harnett County Schools	430347	Harnett Central Middle	North Central	Y	Y	Y
Harnett County Schools	430348	Johnsonville Elementary	North Central	Y	Y	
Harnett County Schools	430349	Highland Elementary	North Central	Y	Y	
Harnett County Schools	430351	Highland Middle	North Central	Y	Y	
Harnett County Schools	430358	Lillington-Shawtown Elementary	North Central	Y	Y	
Harnett County Schools	430369	Overhills Elementary	North Central	Y	Y	
Harnett County Schools	430376	South Harnett Elementary	North Central	Y	Y	Y
Harnett County Schools	430385	Harnett Virtual Academy	North Central	Y	Y	
Henderson County Schools	450301	Apple Valley Middle	Western	Y	Y	
Henderson County Schools	450322	Edneyville Elementary	Western	Y	Y	
Henderson County Schools	450346	Upward Elementary	Western	Y	Y	
Hertford County Schools	460308	Ahoskie Elementary	Northeast	Y	Y	Y
Hertford County Schools	460312	Bearfield Primary	Northeast	Y	Y	
Hertford County Schools	460318	Hertford County Middle	Northeast	Y	Y	
Hertford County Schools	460320	Hertford County High	Northeast	Y	Y	Y
Hertford County Schools	460332	Riverview Elementary	Northeast		Y	Y
Hoke County Schools	470332	East Hoke Middle	Sandhills	Y	Y	Y

Hoke County Schools	470441	Sandy Grove Elementary	Sandhills	Y	Y	
Hoke County Schools	470442	Sandy Grove Middle	Sandhills	Y	Y	
Hyde County Schools	480306	Mattamuskeet School	Northeast	Y		Y
Iredell-Statesville Schools	490319	Cloverleaf Elementary	Southwest	Y	Y	Y
Iredell-Statesville Schools	490326	East Iredell Elementary	Southwest	Y	Y	
Iredell-Statesville Schools	490327	East Iredell Middle	Southwest	Y	Y	
Iredell-Statesville Schools	490345	N B Mills Elementary	Southwest	Y	Y	Y
Iredell-Statesville Schools	490349	North Iredell Middle	Southwest	Y	Y	
Iredell-Statesville Schools	490352	Third Creek Middle	Southwest	Y	Y	Y
Iredell-Statesville Schools	490354	Statesville High	Southwest	Y	Y	Y
Iredell-Statesville Schools	490363	Third Creek Elementary	Southwest	Y	Y	
Iredell-Statesville Schools	490366	Troutman Middle	Southwest	Y		Y
Iredell-Statesville Schools	490380	West Iredell High	Southwest	Y	Y	
Iredell-Statesville Schools	490384	West Iredell Middle	Southwest	Y	Y	
Mooresville City Schools	491308	Mooresville Middle	Southwest	Y	Y	
Jackson County Schools	500302	Blue Ridge Early College	Western	Y		Y
Jackson County Schools	500304	Cullowhee Valley School	Western	Y	Y	
Jackson County Schools	500316	Blue Ridge School	Western		Y	Y
Jackson County Schools	500337	Smokey Mountain Elementary	Western	Y	Y	Y
Johnston County Schools	510310	Benson Middle	North Central	Y		Y
Johnston County Schools	510326	West Clayton Elementary	North Central		Y	Y
Johnston County Schools	510365	JCPS Virtual Academy	North Central	Y	Y	
Johnston County Schools	510390	Selma Middle School	North Central	Y		Y
Johnston County Schools	510396	West Smithfield Elementary	North Central		Y	Y
Johnston County Schools	510404	South Smithfield Elementary	North Central	Y	Y	Y
Jones County Schools	520336	Trenton Elementary	Southeast	Y	Y	
Lee County Schools	530314	East Lee Middle	North Central	Y	Y	Y
Lee County Schools	530356	West Lee Middle	North Central	Y	Y	Y
Lenoir County Public Schools	540308	Contentnea-Savannah School	Southeast	Y	Y	
Lenoir County Public Schools	540315	Kinston High	Southeast	Y	Y	Y
Lenoir County Public Schools	540316	La Grange Elementary	Southeast	Y	Y	
Lenoir County Public Schools	540324	North Lenoir High	Southeast	Y	Y	
Lenoir County Public Schools	540325	Northeast Elementary	Southeast	Y	Y	Y
Lenoir County Public Schools	540326	Northwest Elementary	Southeast	Y		Y
Lenoir County Public Schools	540330	Rochelle Middle	Southeast	Y	Y	Y
Lenoir County Public Schools	540338	Southeast Elementary	Southeast	Y	Y	Y
Lincoln County Schools	550312	Battleground Elementary	Southwest	Y	Y	Y
Macon County Schools	560331	Mountain View Intermediate	Western	Y	Y	
Martin County Schools	580312	E J Hayes Elementary	Northeast	Y	Y	Y
Martin County Schools	580316	South Creek Elementary	Northeast		Y	Y
Martin County Schools	580337	South Creek Middle	Northeast	Y	Y	

Martin County Schools	580344	South Creek High	Northeast	Y	Y	Y
Martin County Schools	580368	Riverside High	Northeast	Y	Y	
Martin County Schools	580372	Riverside Middle	Northeast	Y	Y	Y
McDowell County Schools	590329	McDowell Virtual Academy	Northwest	Y	Y	
McDowell County Schools	590344	Pleasant Gardens Elementary School	Northwest	Y	Y	
Charlotte-Mecklenburg Schools	600301	Albemarle Road Middle	Southwest	Y	Y	Y
Charlotte-Mecklenburg Schools	600303	Charlotte East Language Academy	Southwest	Y	Y	Y
Charlotte-Mecklenburg Schools	600305	J. M. Alexander Middle	Southwest	Y	Y	Y
Charlotte-Mecklenburg Schools	600311	Ashley Park PreK-8 School	Southwest	Y	Y	Y
Charlotte-Mecklenburg Schools	600341	Cochrane Collegiate Academy	Southwest	Y	Y	Y
Charlotte-Mecklenburg Schools	600362	David Cox Road Elementary	Southwest	Y	Y	Y
Charlotte-Mecklenburg Schools	600364	Military and Global Leadership	Southwest		Y	Y
Charlotte-Mecklenburg Schools	600365	Devonshire Elementary	Southwest	Y		Y
Charlotte-Mecklenburg Schools	600366	Marie G Davis School	Southwest	Y	Y	Y
Charlotte-Mecklenburg Schools	600374	Druid Hills Academy	Southwest	Y	Y	Y
Charlotte-Mecklenburg Schools	600381	Eastway Middle	Southwest	Y		Y
Charlotte-Mecklenburg Schools	600397	Garinger High School	Southwest	Y	Y	
Charlotte-Mecklenburg Schools	600398	Greenway Park Elementary	Southwest	Y		Y
Charlotte-Mecklenburg Schools	600405	Harding University High School	Southwest	Y	Y	Y
Charlotte-Mecklenburg Schools	600410	Hickory Grove Elementary	Southwest	Y	Y	
Charlotte-Mecklenburg Schools	600416	Hornets Nest Elementary	Southwest	Y	Y	Y
Charlotte-Mecklenburg Schools	600418	Croft Community School	Southwest	Y		Y
Charlotte-Mecklenburg Schools	600422	Huntingtowne Farms Elementary	Southwest	Y	Y	
Charlotte-Mecklenburg Schools	600428	James Martin Middle	Southwest	Y	Y	Y
Charlotte-Mecklenburg Schools	600432	Joseph W Grier Academy	Southwest		Y	Y
Charlotte-Mecklenburg Schools	600434	Kennedy Middle	Southwest	Y	Y	
Charlotte-Mecklenburg Schools	600440	Lebanon Road Elementary	Southwest	Y	Y	
Charlotte-Mecklenburg Schools	600446	Mallard Creek Elementary	Southwest	Y	Y	
Charlotte-Mecklenburg Schools	600448	Martin Luther King, Jr Middle	Southwest	Y	Y	
Charlotte-Mecklenburg Schools	600450	McClintock Middle	Southwest	Y	Y	
Charlotte-Mecklenburg Schools	600459	Montclair Elementary	Southwest		Y	Y
Charlotte-Mecklenburg Schools	600462	Mountain Island Lake Academy	Southwest	Y	Y	
Charlotte-Mecklenburg Schools	600463	River Oaks Academy	Southwest	Y	Y	Y
Charlotte-Mecklenburg Schools	600474	Newell Elementary	Southwest		Y	Y
Charlotte-Mecklenburg Schools	600478	J. H. Gunn Elementary	Southwest	Y		Y
Charlotte-Mecklenburg Schools	600479	Northeast Middle	Southwest	Y	Y	
Charlotte-Mecklenburg Schools	600485	Oakdale Elementary	Southwest	Y	Y	Y
Charlotte-Mecklenburg Schools	600489	Bruns Avenue Elementary	Southwest	Y		Y
Charlotte-Mecklenburg Schools	600498	Performance Learning Center	Southwest		Y	Y
Charlotte-Mecklenburg Schools	600501	Pinewood Elementary	Southwest	Y	Y	
Charlotte-Mecklenburg Schools	600514	Ranson Middle	Southwest	Y	Y	Y

Charlotte-Mecklenburg Schools	600517	Reid Park Academy	Southwest	Y	Y	Y
Charlotte-Mecklenburg Schools	600518	Ridge Road Middle	Southwest	Y	Y	
Charlotte-Mecklenburg Schools	600520	Sedgefield Middle	Southwest		Y	Y
Charlotte-Mecklenburg Schools	600538	Southwest Middle School	Southwest	Y	Y	
Charlotte-Mecklenburg Schools	600545	Starmount Academy of Excellence	Southwest		Y	Y
Charlotte-Mecklenburg Schools	600546	Statesville Road Elementary	Southwest	Y	Y	Y
Charlotte-Mecklenburg Schools	600550	Sterling Elementary	Southwest		Y	Y
Charlotte-Mecklenburg Schools	600562	Tuckasegee Elementary	Southwest	Y		Y
Charlotte-Mecklenburg Schools	600565	University Park Creative Arts	Southwest	Y	Y	Y
Charlotte-Mecklenburg Schools	600576	West Charlotte High School	Southwest		Y	Y
Charlotte-Mecklenburg Schools	600579	West Mecklenburg High School	Southwest	Y	Y	
Charlotte-Mecklenburg Schools	600583	Wilson STEM Academy	Southwest	Y		Y
Charlotte-Mecklenburg Schools	600592	Julius L. Chambers High School	Southwest	Y	Y	Y
Montgomery County Schools	620312	Candor Elementary	Sandhills	Y	Y	
Montgomery County Schools	620339	West Middle	Sandhills	Y	Y	Y
Moore County Schools	630308	Aberdeen Elementary	Sandhills	Y	Y	Y
Moore County Schools	630320	Elise Middle	Sandhills	Y		Y
Moore County Schools	630348	Robbins Elementary	Sandhills	Y	Y	Y
Nash County Public Schools	640306	Baskerville Elementary	North Central	Y	Y	Y
Nash County Public Schools	640308	Benvenue Elementary	North Central	Y	Y	Y
Nash County Public Schools	640320	Nash Central Middle	North Central	Y	Y	Y
Nash County Public Schools	640326	D S Johnson Elementary	North Central	Y	Y	Y
Nash County Public Schools	640328	Englewood Elementary	North Central	Y	Y	Y
Nash County Public Schools	640334	J W Parker Middle	North Central		Y	Y
Nash County Public Schools	640335	Rocky Mount Middle	North Central	Y		Y
Nash County Public Schools	640336	Middlesex Elementary	North Central		Y	Y
Nash County Public Schools	640346	Nash Central High	North Central		Y	Y
Nash County Public Schools	640361	Rocky Mount High	North Central	Y	Y	Y
Nash County Public Schools	640376	Spring Hope Elementary	North Central	Y	Y	Y
New Hanover County Schools	650312	R Freeman Sch of Engineering	Southeast	Y	Y	Y
New Hanover County Schools	650316	College Park Elementary	Southeast	Y	Y	
New Hanover County Schools	650328	Forest Hills Global Elementary	Southeast	Y	Y	Y
New Hanover County Schools	650355	Career Readiness Academy at Mosley PLC	Southeast	Y	Y	
New Hanover County Schools	650384	A H Snipes Academy of Arts/Des	Southeast	Y	Y	Y
New Hanover County Schools	650392	Williston Middle	Southeast	Y	Y	Y
New Hanover County Schools	650404	Wrightsboro Elementary	Southeast	Y	Y	Y
Northampton County Schools	660306	Central Elementary	Northeast	Y	Y	
Northampton County Schools	660308	Conway Middle	Northeast	Y		Y
Northampton County Schools	660320	Gaston STEM Leadership Academy	Northeast		Y	Y
Northampton County Schools	660336	Northampton County High School	Northeast	Y	Y	Y
Onslow County Schools	670308	Blue Creek Elementary	Southeast	Y	Y	Y

Onslow County Schools	670312	Clyde Erwin Elementary	Southeast	Y	Y	Y
Onslow County Schools	670321	Hunters Creek Elementary	Southeast	Y	Y	
Onslow County Schools	670322	Hunters Creek Middle	Southeast	Y	Y	Y
Onslow County Schools	670323	Jacksonville Commons Elem	Southeast	Y	Y	
Onslow County Schools	670329	Meadow View Elementary	Southeast	Y	Y	
Onslow County Schools	670337	Heritage Elementary School	Southeast		Y	Y
Onslow County Schools	670343	Southwest Elementary	Southeast	Y	Y	
Onslow County Schools	670345	Southwest Middle	Southeast	Y	Y	
Onslow County Schools	670346	Summersill Elementary	Southeast	Y	Y	
Onslow County Schools	670347	Stateside Elementary	Southeast	Y	Y	
Onslow County Schools	670356	Trexler Middle	Southeast	Y	Y	
Onslow County Schools	670378	Onslow Virtual Elementary	Southeast	Y	Y	
Orange County Schools	680327	Gravelly Hill Middle	North Central	Y	Y	
Pasquotank County Schools	700306	Central Elementary	Northeast	Y	Y	
Pasquotank County Schools	700314	Northside Elementary	Northeast	Y	Y	
Pasquotank County Schools	700316	J C Sawyer Elementary	Northeast	Y	Y	
Pasquotank County Schools	700317	Northeastern High	Northeast	Y	Y	
Pasquotank County Schools	700318	Pasquotank Elementary	Northeast	Y	Y	Y
Pasquotank County Schools	700319	Pasquotank County High	Northeast	Y	Y	Y
Pasquotank County Schools	700320	P W Moore Elementary	Northeast		Y	Y
Pender County Schools	710316	Burgaw Middle	Southeast	Y	Y	
Pender County Schools	710320	Cape Fear Middle	Southeast	Y	Y	
Pender County Schools	710326	Pender High	Southeast	Y	Y	
Pender County Schools	710328	Penderlea Elementary	Southeast	Y	Y	
Pender County Schools	710348	West Pender Middle	Southeast	Y	Y	Y
Person County Schools	730334	North Elementary	North Central	Y	Y	
Person County Schools	730344	Northern Middle	North Central	Y	Y	Y
Person County Schools	730356	South Elementary	North Central	Y		Y
Pitt County Schools	740310	Belvoir Elementary	Northeast	Y	Y	Y
Pitt County Schools	740320	Bethel Elementary	Northeast	Y	Y	
Pitt County Schools	740324	C M Eppes Middle	Northeast	Y		Y
Pitt County Schools	740334	Falkland Elementary	Northeast	Y	Y	
Pitt County Schools	740337	E B Aycock Middle	Northeast	Y	Y	
Pitt County Schools	740340	Farmville Middle	Northeast	Y	Y	
Pitt County Schools	740352	Grifton	Northeast	Y	Y	Y
Pitt County Schools	740368	Lakeforest Elementary	Northeast	Y	Y	Y
Pitt County Schools	740375	Northwest Elementary	Northeast	Y	Y	Y
Pitt County Schools	740386	Sam D Bundy Elementary	Northeast	Y	Y	
Pitt County Schools	740390	South Greenville Elementary	Northeast	Y	Y	Y
Pitt County Schools	740400	Wahl Coates Elementary	Northeast	Y	Y	Y
Pitt County Schools	740402	Wellcome Middle	Northeast	Y	Y	

Randolph County Schools	760308	Trinity Middle School	Piedmont-Triad	Y	Y	
Randolph County Schools	760318	Eastern Randolph High School	Piedmont-Triad	Y	Y	
Randolph County Schools	760324	Franklinville Elementary School	Piedmont-Triad	Y	Y	Y
Randolph County Schools	760332	Liberty Elementary School	Piedmont-Triad	Y	Y	Y
Randolph County Schools	760338	Northeastern Randolph Middle School	Piedmont-Triad	Y	Y	
Randolph County Schools	760340	Ramseur Elementary School	Piedmont-Triad	Y	Y	
Randolph County Schools	760344	Randleman Elementary School	Piedmont-Triad	Y	Y	
Randolph County Schools	760352	Randleman Middle School	Piedmont-Triad	Y	Y	
Randolph County Schools	760357	Southeastern Randolph Middle School	Piedmont-Triad	Y	Y	Y
Randolph County Schools	760358	Southwestern Randolph High School	Piedmont-Triad	Y	Y	
Randolph County Schools	760376	Trinity Elementary School	Piedmont-Triad	Y	Y	
Randolph County Schools	760382	Uwharrie Ridge Six-Twelve	Piedmont-Triad	Y	Y	Y
Asheboro City Schools	761312	Balfour Elementary	Piedmont-Triad	Y	Y	
Asheboro City Schools	761332	Lindley Park Elementary	Piedmont-Triad	Y	Y	
Asheboro City Schools	761336	North Asheboro Middle	Piedmont-Triad	Y	Y	
Richmond County Schools	770310	East Rockingham Elementary	Sandhills	Y	Y	
Richmond County Schools	770368	West Rockingham Elementary	Sandhills	Y	Y	
Richmond County Schools	770370	Washington Street Elementary	Sandhills	Y	Y	
Robeson County Schools	780320	Deep Branch Elementary	Sandhills	Y	Y	Y
Robeson County Schools	780325	Fairmont High	Sandhills	Y	Y	
Robeson County Schools	780326	Fairmont Middle	Sandhills	Y	Y	Y
Robeson County Schools	780328	Fairgrove Elementary School	Sandhills	Y	Y	
Robeson County Schools	780330	L Gilbert Carroll	Sandhills	Y	Y	Y
Robeson County Schools	780336	Littlefield Middle	Sandhills	Y		Y
Robeson County Schools	780340	Long Branch Elementary	Sandhills	Y	Y	
Robeson County Schools	780341	Lumberton Junior	Sandhills		Y	Y
Robeson County Schools	780352	Orrum Middle	Sandhills	Y	Y	Y
Robeson County Schools	780360	Parkton Elementary	Sandhills	Y	Y	Y
Robeson County Schools	780364	Pembroke Elementary	Sandhills	Y	Y	Y
Robeson County Schools	780368	Pembroke Middle	Sandhills	Y		Y
Robeson County Schools	780374	Peterson Elementary	Sandhills	Y	Y	Y
Robeson County Schools	780376	Piney Grove Elementary	Sandhills	Y	Y	Y
Robeson County Schools	780392	Rex-Rennert Elementary	Sandhills	Y	Y	Y
Robeson County Schools	780393	Red Springs Middle	Sandhills	Y	Y	Y
Robeson County Schools	780394	Rosenwald Elementary	Sandhills	Y	Y	Y
Robeson County Schools	780400	Saint Pauls Elementary	Sandhills	Y		Y
Robeson County Schools	780410	Townsend Elementary	Sandhills	Y	Y	Y
Robeson County Schools	780417	W H Knuckles	Sandhills	Y	Y	Y
Robeson County Schools	780421	South Robeson Middle School	Sandhills	Y	Y	
Rockingham County Schools	790330	J E Holmes Middle	Piedmont-Triad	Y	Y	
Rockingham County Schools	790344	Leaksville-Spray Elementary	Piedmont-Triad	Y		Y

Rockingham County Schools	790362	John W Dillard Academy	Piedmont-Triad	Y	Y	
Rockingham County Schools	790366	Reidsville High	Piedmont-Triad	Y	Y	
Rockingham County Schools	790374	Reidsville Middle	Piedmont-Triad	Y		Y
Rockingham County Schools	790386	South End Elementary	Piedmont-Triad	Y	Y	Y
Rowan-Salisbury Schools	800314	Erwin Middle	Southwest	Y	Y	Y
Rowan-Salisbury Schools	800315	Overton Elementary	Southwest	Y	Y	Y
Rowan-Salisbury Schools	800316	China Grove Elementary	Southwest	Y	Y	Y
Rowan-Salisbury Schools	800320	China Grove Middle	Southwest	Y	Y	
Rowan-Salisbury Schools	800328	Corriher Lipe Middle	Southwest	Y	Y	Y
Rowan-Salisbury Schools	800346	Koontz Elementary	Southwest	Y	Y	Y
Rowan-Salisbury Schools	800347	Shive Elementary	Southwest	Y	Y	
Rowan-Salisbury Schools	800356	Granite Quarry Elementary	Southwest	Y	Y	
Rowan-Salisbury Schools	800358	Isenberg Elementary	Southwest	Y	Y	
Rowan-Salisbury Schools	800359	Dole Elementary	Southwest	Y	Y	Y
Rowan-Salisbury Schools	800360	Hurley Elementary	Southwest	Y	Y	Y
Rowan-Salisbury Schools	800362	Knollwood Elementary	Southwest	Y	Y	Y
Rowan-Salisbury Schools	800363	Knox Middle	Southwest	Y	Y	Y
Rowan-Salisbury Schools	800373	North Rowan Elementary	Southwest	Y	Y	Y
Rowan-Salisbury Schools	800376	North Rowan High	Southwest	Y	Y	Y
Rowan-Salisbury Schools	800377	North Rowan Middle	Southwest	Y	Y	Y
Rowan-Salisbury Schools	800396	Salisbury High	Southwest	Y	Y	Y
Rowan-Salisbury Schools	800398	Southeast Middle	Southwest	Y	Y	Y
Rowan-Salisbury Schools	800400	South Rowan High	Southwest	Y	Y	
Rowan-Salisbury Schools	800406	West Rowan Elementary	Southwest	Y	Y	
Rowan-Salisbury Schools	800408	West Rowan High	Southwest	Y	Y	
Rowan-Salisbury Schools	800410	West Rowan Middle	Southwest	Y	Y	Y
Rowan-Salisbury Schools	800500	Summit Virtual Academy	Southwest	Y	Y	
Rutherford County Schools	810342	East Rutherford Middle School	Western	Y	Y	
Sampson County Schools	820347	Hobbton Middle	Sandhills	Y	Y	
Sampson County Schools	820370	Union Middle	Sandhills	Y	Y	
Sampson County Schools	820372	Roseboro-Salemburg Middle	Sandhills	Y	Y	
Clinton City Schools	821320	Sampson Middle	Sandhills	Y		Y
Scotland County Schools	830304	Carver Middle	Sandhills	Y	Y	Y
Scotland County Schools	830328	Laurel Hill Elementary	Sandhills	Y	Y	Y
Scotland County Schools	830349	Spring Hill Middle	Sandhills	Y		Y
Scotland County Schools	830360	Wagram Elementary	Sandhills	Y	Y	Y
Scotland County Schools	830364	Sycamore Lane Elementary	Sandhills	Y	Y	Y
Stanly County Schools	840302	Albemarle High	Southwest	Y	Y	
Stanly County Schools	840303	Albemarle Middle	Southwest	Y	Y	
Stanly County Schools	840304	Aquadale Elementary	Southwest	Y	Y	
Stanly County Schools	840310	Central Elementary	Southwest	Y		Y

Stanly County Schools	840312	Endy Elementary	Southwest	Y	Y	
Stanly County Schools	840316	East Albemarle Elementary	Southwest	Y	Y	
Stanly County Schools	840328	North Stanly Middle	Southwest	Y	Y	
Stanly County Schools	840336	Norwood Elementary	Southwest	Y	Y	
Stanly County Schools	840358	South Stanly Middle	Southwest	Y	Y	
Stanly County Schools	840360	Stanfield Elementary	Southwest	Y	Y	
Stanly County Schools	840366	Stanly County Virtual Education	Southwest	Y	Y	
Stokes County Schools	850312	Germanton Elementary School	Piedmont-Triad		Y	Y
Stokes County Schools	850336	Pine Hall Elementary School	Piedmont-Triad	Y	Y	
Stokes County Schools	850350	Southeastern Stokes Middle School	Piedmont-Triad	Y	Y	
Stokes County Schools	850356	Walnut Cove Elementary School	Piedmont-Triad	Y	Y	
Surry County Schools	860306	Central Middle	Piedmont-Triad	Y	Y	
Mount Airy City Schools	862310	Jones Intermediate	Piedmont-Triad		Y	Y
Tyrrell County Schools	890306	Columbia Middle	Northeast	Y	Y	Y
Tyrrell County Schools	890308	Tyrrell Elementary	Northeast		Y	Y
Union County Public Schools	900306	East Elementary	Southwest	Y	Y	
Union County Public Schools	900308	East Union Middle	Southwest	Y	Y	Y
Union County Public Schools	900314	Monroe Middle	Southwest	Y	Y	Y
Union County Public Schools	900336	Monroe High	Southwest	Y	Y	
Union County Public Schools	900346	Parkwood Middle	Southwest	Y	Y	
Union County Public Schools	900370	Walter Bickett Elementary	Southwest	Y	Y	
Vance County Schools	910308	Carver Elementary	North Central	Y	Y	
Vance County Schools	910311	Clarke Elementary	North Central	Y	Y	
Vance County Schools	910316	Vance County Middle School	North Central	Y	Y	Y
Vance County Schools	910340	New Hope Elementary	North Central		Y	Y
Vance County Schools	910346	E O Young Jr Elementary	North Central	Y	Y	Y
Vance County Schools	910360	E M Rollins Elementary	North Central	Y	Y	Y
Vance County Schools	910369	Vance Virtual Village Academy	North Central	Y	Y	
Vance County Schools	910370	Vance County High School	North Central	Y	Y	Y
Wake County Schools	920320	Aversboro Elementary	North Central	Y	Y	Y
Wake County Schools	920326	Baileywick Road Elementary	North Central	Y	Y	Y
Wake County Schools	920329	Barwell Road Elementary	North Central	Y		Y
Wake County Schools	920332	Beaverdam Elementary	North Central	Y		Y
Wake County Schools	920352	Bugg Elementary	North Central	Y		Y
Wake County Schools	920360	Carroll Middle	North Central	Y	Y	
Wake County Schools	920370	Centennial Campus Middle	North Central	Y	Y	Y
Wake County Schools	920393	Dillard Drive Elementary	North Central	Y	Y	
Wake County Schools	920394	Dillard Drive Middle	North Central	Y	Y	Y
Wake County Schools	920398	Durant Road Elementary	North Central	Y	Y	
Wake County Schools	920399	Durant Road Middle	North Central	Y	Y	
Wake County Schools	920403	East Garner Elementary	North Central	Y	Y	Y



Wake County Schools	920404	East Garner Middle	North Central	Y	Y	
Wake County Schools	920408	East Millbrook Middle	North Central	Y	Y	Y
Wake County Schools	920410	Neuse River Middle	North Central	Y	Y	Y
Wake County Schools	920440	Green Elementary	North Central	Y	Y	Y
Wake County Schools	920446	Hodge Road Elementary	North Central	Y		Y
Wake County Schools	920466	Knightdale High	North Central	Y	Y	
Wake County Schools	920480	Lockhart Elementary	North Central		Y	Y
Wake County Schools	920496	Millbrook Elementary	North Central	Y	Y	Y
Wake County Schools	920512	North Garner Middle	North Central	Y	Y	
Wake County Schools	920536	Powell Elementary	North Central		Y	Y
Wake County Schools	920542	Reedy Creek Elementary	North Central	Y	Y	
Wake County Schools	920547	Rogers Lane Elementary	North Central	Y		Y
Wake County Schools	920549	River Bend Middle	North Central	Y		Y
Wake County Schools	920560	Smith Elementary	North Central	Y	Y	
Wake County Schools	920562	Southeast Raleigh High	North Central	Y	Y	
Wake County Schools	920563	Southeast Raleigh Elementary	North Central	Y	Y	
Wake County Schools	920570	Timber Drive Elementary	North Central	Y		Y
Wake County Schools	920580	Vandora Springs Elementary	North Central	Y	Y	
Wake County Schools	920592	Wake Forest Middle School	North Central	Y	Y	
Wake County Schools	920597	Wakelon Elementary	North Central	Y	Y	Y
Wake County Schools	920599	Walnut Creek Elementary	North Central	Y		Y
Wake County Schools	920600	Wendell Elementary	North Central	Y	Y	Y
Wake County Schools	920601	Wendell Middle	North Central	Y		Y
Wake County Schools	920616	Wilburn Elementary	North Central	Y	Y	Y
Wake County Schools	920618	Wildwood Forest Elementary	North Central	Y		Y
Wake County Schools	920632	Zebulon Elementary	North Central	Y	Y	Y
Warren County Schools	930330	Mariam Boyd Elementary	North Central	Y	Y	
Warren County Schools	930340	Northside Elementary	North Central	Y	Y	Y
Warren County Schools	930348	Vaughan Elementary	North Central	Y	Y	
Warren County Schools	930352	Warren County High	North Central	Y	Y	Y
Warren County Schools	930354	Warren County Middle	North Central	Y	Y	Y
Washington County Schools	940306	Creswell Elementary	Northeast		Y	Y
Washington County Schools	940314	Pines Elementary	Northeast	Y	Y	Y
Washington County Schools	940316	Washington County High	Northeast	Y	Y	
Wayne County Public Schools	960312	Brogden Middle	Southeast	Y	Y	Y
Wayne County Public Schools	960314	Brogden Primary	Southeast	Y	Y	
Wayne County Public Schools	960318	Carver Heights Elementary	Southeast	Y	Y	
Wayne County Public Schools	960326	Dillard Middle	Southeast	Y	Y	Y
Wayne County Public Schools	960329	Eastern Wayne Elementary	Southeast	Y	Y	Y
Wayne County Public Schools	960330	Eastern Wayne High	Southeast	Y	Y	
Wayne County Public Schools	960331	Eastern Wayne Middle	Southeast	Y	Y	Y

Wayne County Public Schools	960335	Goldsboro High	Southeast	Y	Y	Y
Wayne County Public Schools	960338	Grantham Middle	Southeast	Y	Y	Y
Wayne County Public Schools	960348	Mount Olive Middle	Southeast	Y	Y	
Wayne County Public Schools	960380	Southern Wayne High	Southeast	Y	Y	Y
Wayne County Public Schools	960387	Spring Creek Middle	Southeast	Y	Y	
Wayne County Public Schools	960388	Tommy's Road Elementary	Southeast	Y	Y	
Wilkes County Schools	970308	Boomer-Ferguson Elementary School	Northwest	Y	Y	
Wilkes County Schools	970312	C C Wright Elementary School	Northwest	Y	Y	
Wilson County Schools	980308	B O Barnes Elementary	North Central	Y		Y
Wilson County Schools	980317	Charles H Darden Middle	North Central	Y	Y	
Wilson County Schools	980356	Margaret Hearne Elementary	North Central		Y	Y
Wilson County Schools	980357	Vick Elementary	North Central	Y	Y	Y

### **2022-2023 Continually Low Performing Charter Schools List**

A continually low-performing charter school is identified as low-performing in any two of the last three years. The years used for this list are the 2017–18, 2018–19 and 2021–22 school years, as 2019–20 and 2020–21 do not have data. A low-performing charter has a school performance grade of 'D' or 'F', and a growth status of 'Met' or 'Not Met'.

<b>District Name</b>	<b>School Code</b>	<b>School Name</b>	<b>State Board Region</b>	<b>Low Performing 2022–23</b>	<b>Low Performing 2021–22</b>	<b>Low Performing 2018–19</b>
Charter Schools	00A000	North Carolina Cyber Academy	Virtual	Y	Y	Y
Charter Schools	00B000	NC Virtual Academy	Virtual		Y	Y
Charter Schools	09A000	Paul R. Brown Leadership Academy	Sandhills		Y	Y
Charter Schools	09B000	Emereau Bladen	Sandhills	Y	Y	
Charter Schools	13B000	Cabarrus Charter Academy	Southwest	Y	Y	Y
Charter Schools	13C000	A.C.E. Academy	Southwest	Y	Y	Y
Charter Schools	24N000	Classical Charter Schools of Whiteville	Sandhills	Y	Y	
Charter Schools	26C000	The Capitol Encore Academy	Sandhills	Y	Y	Y
Charter Schools	29A000	Davidson Charter Academy	Piedmont-Triad		Y	Y
Charter Schools	32C000	Community School of Digital & Visual Art	North Central	Y	Y	Y
Charter Schools	32D000	Kestrel Heights School	North Central	Y	Y	
Charter Schools	32M000	Global Scholars Academy	North Central	Y	Y	Y
Charter Schools	32P000	The Institute Development Young Leaders	North Central		Y	Y
Charter Schools	32R000	Excelsior Classical Academy	North Central	Y	Y	
Charter Schools	34D000	Carter G. Woodson School	Piedmont-Triad	Y	Y	Y
Charter Schools	34F000	Forsyth Academy	Piedmont-Triad	Y		Y
Charter Schools	36F000	Ridgeview Charter School	Southwest	Y	Y	
Charter Schools	41C000	Guilford Preparatory Academy	Piedmont-Triad	Y	Y	
Charter Schools	41H000	College Prep and Leadership Academy	Piedmont-Triad	Y		Y
Charter Schools	41L000	Gate City Charter	Piedmont-Triad	Y	Y	Y
Charter Schools	41M000	Next Generation Academy	Piedmont-Triad	Y	Y	
Charter Schools	41N000	The Experiential School of Greensboro	Piedmont-Triad	Y	Y	Y
Charter Schools	41R000	Summit Creek Academy	Piedmont-Triad	Y	Y	
Charter Schools	42A000	KIPP Halifax College Preparatory	Northeast	Y	Y	Y
Charter Schools	43D000	Achievement Charter Academy	North Central	Y	Y	
Charter Schools	49B000	American Renaissance School	Southwest	Y	Y	
Charter Schools	49D000	Success Institute Charter	Southwest		Y	Y
Charter Schools	54A000	Children's Village Academy	Southeast	Y	Y	Y
Charter Schools	60L000	KIPP Charlotte	Southwest	Y	Y	Y
Charter Schools	60N000	Aristotle Preparatory Academy	Southwest	Y	Y	
Charter Schools	60P000	Eastside STREAM Academy	Southwest	Y	Y	Y
Charter Schools	60Q000	Invest Collegiate Transform	Southwest	Y	Y	Y
Charter Schools	61J000	Lakeside Charter Academy	Southwest	Y	Y	
Charter Schools	61K000	United Community School	Southwest	Y	Y	

Charter Schools	61N000	TMSA Charlotte	Southwest	Y	Y	
Charter Schools	61P000	VERITAS Community School, CFA	Southwest	Y	Y	Y
Charter Schools	61T000	Movement Charter School	Southwest	Y	Y	Y
Charter Schools	61Y000	Steele Creek Preparatory Academy	Southwest	Y	Y	
Charter Schools	62A000	Tillery Charter Academy	Sandhills	Y	Y	
Charter Schools	62J000	Southwest Charlotte STEM Academy	Southwest	Y	Y	
Charter Schools	64A000	Rocky Mount Preparatory	North Central	Y	Y	Y
Charter Schools	65B000	Wilmington Preparatory Academy	Southeast	Y	Y	
Charter Schools	65C000	Classical Charter Schools of Wilmington	Southeast	Y	Y	Y
Charter Schools	65G000	Girls Leadership Academy of Wilmington	Southeast		Y	Y
Charter Schools	65H000	Wilmington School of the Arts	Southeast	Y	Y	
Charter Schools	67B000	Z.E.C.A. School of Arts and Technology	Southeast	Y	Y	Y
Charter Schools	69A000	Arapahoe Charter School	Southeast	Y	Y	
Charter Schools	76A000	Uwharrie Charter Academy	Piedmont-Triad	Y	Y	
Charter Schools	79A000	Bethany Community School	Piedmont-Triad	Y	Y	
Charter Schools	90D000	Monroe Charter Academy	Southwest	Y	Y	
Charter Schools	90F000	Apprentice Academy High School	Southwest	Y	Y	
Charter Schools	93A000	Haliwa-Saponi Tribal School	North Central	Y	Y	Y
Charter Schools	93J000	RISE Southeast Raleigh Charter	North Central	Y	Y	Y
Charter Schools	93T000	Cardinal Charter Acad at Wendell Falls	North Central	Y	Y	
Charter Schools	94A000	Pocosin Innovative Charter	Northeast	Y	Y	
Charter Schools	96C000	Dillard Academy	Southeast	Y		Y
Charter Schools	96F000	Wayne Preparatory Academy	Southeast	Y	Y	

**2022-2023 CARES Intensive Intervention Pilot**

<b>CARES INTENSIVE INTERVENTION PILOT 2022-2023</b>		
<b>District Name</b>	<b>School Code</b>	<b>School Name</b>
Anson County Schools	40306	Anson High School
Anson County Schools	40309	Anson Middle
Anson County Schools	40311	Wadesboro Primary
Anson County Schools	40316	Lilesville Elementary
Anson County Schools	40324	Morven Elementary
Anson County Schools	40330	Wadesboro Elementary
Bladen County Schools	090328	East Arcadia Elementary
Brunswick County Schools	100316	Leland Middle
Brunswick County Schools	100338	Supply Elementary
Charlotte-Mecklenburg Schools	600489	Bruns Avenue Elementary
Columbus County Schools	240376	Tabor City Middle
Cumberland County Schools	260336	Anne Chesnut Middle
Cumberland County Schools	260358	Luther Nick Jerals Middle
Cumberland County Schools	260372	Lewis Chapel Middle
Cumberland County Schools	260402	Manchester Elementary
Cumberland County Schools	260425	South View Middle
Cumberland County Schools	260428	Spring Lake Middle
Durham Public Schools	320344	Fayetteville Street Elementary
Durham Public Schools	320346	Lowe's Grove Middle
Guilford County Schools	410439	Kirkman Park Elementary
Halifax County Schools	420316	Scotland Neck Elementary Leadership Academy
Halifax County Schools	420324	Enfield Middle S.T.E.A.M. Academy
Halifax County Schools	420358	Southeast Halifax Collegiate Prep Academy
Halifax County Schools	420376	William R Davie Middle S.T.E.M. Academy
Hertford County Schools	460308	Ahoskie Elementary
Hertford County Schools	460312	Bearfield Primary
Hertford County Schools	460318	Hertford County Middle
Hertford County Schools	460320	Hertford County High
Hertford County Schools	460332	Riverview Elementary
Iredell-Statesville Schools	490319	Cloverleaf Elementary
Iredell-Statesville Schools	490327	East Iredell Middle
Martin County Schools	580312	E J Hayes Elementary
Martin County Schools	580316	South Creek Elementary

Nash County Public Schools	640306	Baskerville Elementary
Nash County Public Schools	640308	Benvenue Elementary
Nash County Public Schools	640320	Nash Central Middle
Nash County Public Schools	640326	D S Johnson Elementary
Nash County Public Schools	640328	Englewood Elementary
Nash County Public Schools	640329	G R Edwards Middle
Nash County Public Schools	640334	J W Parker Middle
Nash County Public Schools	640335	Rocky Mount Middle
Nash County Public Schools	640336	Middlesex Elementary
Nash County Public Schools	640342	CITI High School
Nash County Public Schools	640346	Nash Central High
Nash County Public Schools	640361	Rocky Mount High
Nash County Public Schools	640376	Spring Hope Elementary
Northampton County Schools	660306	Central Elementary
Northampton County Schools	660308	Conway Middle
Northampton County Schools	660320	Gaston STEM Leadership Academy
Northampton County Schools	660325	Gaston Middle (closed)
Northampton County Schools	660336	Northampton County High School
Northampton County Schools	660360	Willis Hare Elementary (closed)
Pender County Schools	710348	West Pender Middle
Pitt County Schools	740310	Belvoir Elementary
Pitt County Schools	740324	C M Eppes Middle
Public Schools of Robeson County	780320	Deep Branch Elementary
Public Schools of Robeson County	780326	Fairmont Middle
Public Schools of Robeson County	780330	L Gilbert Carroll Middle
Public Schools of Robeson County	780336	Littlefield Middle
Public Schools of Robeson County	780341	Lumberton Junior High
Public Schools of Robeson County	780352	Orrum Middle
Public Schools of Robeson County	780360	Parkton Elementary
Public Schools of Robeson County	780364	Pembroke Elementary
Public Schools of Robeson County	780368	Pembroke Middle
Public Schools of Robeson County	780374	Peterson Elementary
Public Schools of Robeson County	780376	Piney Grove Elementary
Public Schools of Robeson County	780392	Rex-Rennert Elementary
Public Schools of Robeson County	780393	Red Springs Middle
Public Schools of Robeson County	780394	Rosenwald Elementary
Public Schools of Robeson County	780400	Saint Pauls Elementary
Public Schools of Robeson County	780410	Townsend Middle (Elementary)
Public Schools of Robeson County	780412	Union Chapel Elementary

Public Schools of Robeson County	780417	W H Knuckles
Thomasville City Schools	292316	Liberty Drive Elementary
Thomasville City Schools	292318	Thomasville Primary
Tyrrell County Schools	890304	Columbia High
Tyrrell County Schools	890306	Columbia Middle
Tyrrell County Schools	890308	Tyrrell Elementary
Vance County Schools	910308	Carver Elementary
Vance County Schools	910311	Clarke Elementary
Vance County Schools	910316	Vance County Middle School
Vance County Schools	910340	New Hope Elementary
Vance County Schools	910346	E O Young Jr Elementary
Washington County Schools	940306	Creswell Elementary
Washington County Schools	940314	Pines Elementary
Washington County Schools	940316	Washington County High
Wayne County Public Schools	960312	Brogden Middle
Wayne County Public Schools	960316	Carver Elementary
Wayne County Public Schools	960329	Eastern Wayne Elementary
Wayne County Public Schools	960338	Grantham Middle
Weldon City Schools	422314	Weldon Elementary Global Academy
Weldon City Schools	422318	Weldon Middle
Winston- Salem Forsyth County Schools	340368	Easton Elementary School
Winston- Salem Forsyth County Schools	340376	Forest Park Elementary
Winston- Salem Forsyth County Schools	340400	Ibrahim Elementary
Winston- Salem Forsyth County Schools	340430	Diggs-Latham Elementary
Winston- Salem Forsyth County Schools	340452	Mineral Springs Middle
Winston- Salem Forsyth County Schools	340460	North Forsyth High School
Winston- Salem Forsyth County Schools	340492	Philo-Hill Magnet Academy
Winston- Salem Forsyth County Schools	340568	Winston-Salem Preparatory Acad
Winston-Salem Forsyth County Schools	340366	East Forsyth Middle
Winston-Salem Forsyth County Schools	340514	Smith Farm Elementary