



Steve Troxler
Commissioner

North Carolina Department of Agriculture
and Consumer Services
Division of Soil and Water Conservation

Vernon Cox
Director

Memorandum

TO: Environmental Review Commission
Fiscal Research Division

FROM: Vernon N. Cox, Director *VNC*

Date: January 29, 2020

RE: 2019 Annual Report for Soil and Water Conservation Commission Cost Share Programs

This memo transmits the 2019 Annual Report on the Soil and Water Conservation Commission's Cost Share Programs. These programs are governed by 02 NCAC 59D and 02 NCAC 59H. As required by G.S. 106-850(e), this report consolidates annual reporting for the Agriculture Cost Share Program, Community Conservation Assistance Program and the Agricultural Water Resources Assistance Program.

If you have any questions or need additional information, please contact me at (919) 707-3771 or by email at vernon.cox@ncagr.gov.

Enclosure

cc: Commissioner Steve Troxler
David Smith
Dr. Alexander Stewart
Laura Kilian
David Williams
Julie Henshaw

MAILING ADDRESS
Division of Soil and Water Conservation
1614 Mail Service Center
Raleigh, NC 27699-1614

Telephone: 919-707-3770

LOCATION
Old Health Building
216 West Jones Street
Raleigh, NC 27604

An Equal Opportunity Employer



SOIL AND WATER CONSERVATION COMMISSION COST SHARE PROGRAMS ANNUAL REPORT FISCAL YEAR 2019



The Soil and Water Conservation Commission (Commission) has the statutory responsibility to create, implement and supervise three voluntary, incentive-based conservation programs including the Agriculture Cost Share Program (ACSP), the Community Conservation Assistance Program (CCAP), and the Agricultural Water Resources Assistance Program (AgWRAP). These programs are governed by 02 NCAC 59D and 02 NCAC 59H. Per Session Law 2017-10, this is the third report that consolidates annual reporting for the three programs.

Through these voluntary, incentive-based conservation programs, cooperators are provided educational, technical and financial assistance through their local soil and water conservation districts. The local districts are comprised of 492 elected and appointed district board supervisors, assisted by their staff and partners in natural resource conservation. These partners include technical and professional employees of the soil and water conservation district or county, the U.S. Department of Agriculture's Natural Resources Conservation Service (NRCS), the North Carolina Department of Agriculture and Consumer Services (NCDA&CS), NCDA&CS Division of Soil and Water Conservation (Division), and the North Carolina State University Cooperative Extension Service. Through these partnerships, districts provide the framework for contracting with participants and ensuring the work is performed according to established standards and specifications. Financial resources for these programs are allocated to local soil and water conservation districts by the Commission according to applicable statutes and rules. The Division of Soil and Water Conservation provides administrative and technical support to the local districts, developing the standards of the program approved by the Commission, providing the accounting of funds for program implementation, and providing professional engineering assistance to the local staff. For more information, please refer to Appendix A: Funding and Compliance Process.

For most practices, the amount provided in cost share is based on 75 percent of a predetermined average cost for the practice up to a maximum of \$75,000 per cooperating applicant per year. However, some practices are cost shared on 75 percent of actual cost due to the variable nature of the practice. For ACSP and AgWRAP, farmers who qualify as beginning farmers or limited resource farmers, and farmers participating in an enhanced voluntary agricultural district are eligible to receive up to 90 percent cost share up to a maximum of \$100,000 per year.

Districts spot check a minimum of 5 percent of randomly selected active contracts each year to ensure that practices are being maintained properly. Spot checks for 2019 showed excellent compliance with maintenance requirements by cooperators. When practices are discovered to need additional maintenance, the district is usually able to assist the cooperator to restore the practice to its intended function. Districts follow the Commission's Non-Compliance with Maintenance Requirements for Cost Share Contracts Policy which requires cooperators to repair, re-implement or repay a prorated amount of funds for the practice if it is not functioning as planned or not being operated for its intended use as specified in 02 NCAC 59D .0107 and 02 NCAC 59H .0107. For more information, please refer to Appendix A: Funding and Compliance Process.

Program	Total Funding Requested	FY2019 State Appropriation for conservation practices
Agriculture Cost Share Program	\$20,052,937	\$4,016,998
Community Conservation Assistance Program	\$2,104,131	\$117,000
Agricultural Water Resources Assistance Program	\$7,253,060	\$967,500

Current appropriations do not enable districts to meet demand for financial assistance for installing BMPs to protect water quality and improve water resources in North Carolina.

A map of all contracts funded in FY2019 through these three programs can be referenced in Appendix B: Map of FY2019 Contracted BMPs. Additional contract information is available by county in Appendix C: Total Number and Value of FY2019 Contracts by County.

AGRICULTURE COST SHARE PROGRAM SUMMARY



The North Carolina Agriculture Cost Share Program (ACSP) was authorized by the General Assembly in 1983 to improve water quality associated with agriculture in three nutrient sensitive watersheds covering 16 counties. In 1990, the program was expanded to include 96 soil and water conservation districts (districts) covering all 100 counties across the state. In FY2019, there were 70 approved BMPs in the ACSP. BMPs include both short-term and long-term practices.

In total, the Commission allocated \$4,723,362 to districts. In addition to the 2019 appropriation, the Commission also had available for allocation (1) funds allocated to districts in 2018 with which districts were unable to execute contracts with cooperators prior to the end of the program year and (2) funds recovered from completed and expired contracts from program years 2016 through 2018. Despite the Commission's actions to improve efficiency of the ACSP, districts still must turn away two out of every three farmers requesting cost share assistance due to lack of available funding.

Districts obligated \$4,621,987 of state appropriated cost share funds to 655 contracts with farmers in program year 2019. In addition, the ACSP infrastructure was used to implement conservation practices using several other funding sources. In all, districts obligated \$4,928,806 from all appropriated and grant funds to 678 contracts. Appendix C is a list of 2019 contracts for each county.

Estimated Water Quality Benefits of ACSP Contracts Initiated in 2019

N.C.G.S 106-850.74(e) requires that each project's benefits to water quality be estimated before funding is awarded. To meet this requirement, the Commission chose three indicators of water quality benefits: (1) tons of soil saved, (2) pounds of nitrogen saved or managed, and (3) pounds of phosphorus saved or managed.

Soil savings estimates have been required on all ASCP contracts since the start of the program. Beginning with the 1997 program year, estimates of nitrogen and phosphorus savings were required.

The Division continues to work with the Division of Water Resources, NRCS, and North Carolina State University to improve and refine the methods used to estimate and account for nutrient reductions.

These estimates have allowed the Division to track progress made by agriculture relative to the nutrient reduction requirements in the Neuse, Tar-Pamlico, Jordan Lake and Falls Lake nutrient reduction strategies for agriculture. The ACSP is playing a key role in helping farmers achieve and maintain the nutrient reductions required by these rules.

In 2019, best management practices contracted saved 61,415 tons of soil, 49,481 pounds of phosphorus, 291,055 pounds of nitrogen and affected 33,069 acres of land.

Between 1984 and 2019 it is estimated that an average of 7.6 million tons of soil have been saved annually during the life of the program. Also, the program has reduced nitrogen and phosphorus losses from agricultural land by 21.2 million and 6.6 million pounds per year, respectively.

Currently there are not good scientific tools the agricultural community can use for estimating the benefits for many important and popular BMPs, such as livestock watering wells and livestock exclusion fencing. Still, these practices are known to improve water quality by reducing livestock dependence upon streams for watering. The Technical Review Committee for the program has formed a conservation effects workgroup to review any new data or potential accounting methods that come available. Another factor impacting benefits is the reduced total number of contracts per year. Fewer contracts are due to the reduced funding for the program and the increase in costs for materials and practices over time.

In fiscal year 2019, the General Assembly also appropriated \$2,448,778 to cost share for technical assistance in local soil and water conservation districts. Local governments provide more than 50 percent match for salaries and operating expenses, including office space and administrative support for these technical assistance positions. This year, the cost share technical assistance program cost shared on 102 technical positions in 94 districts in 98 counties to assist farmers in designing and installing BMPs. These state technical assistance cost share funds maintain a local conservation infrastructure and are critical to sustain local county support and funding for local delivery of the program.

AGRICULTURE COST SHARE PROGRAM ACCOMPLISHMENTS

- 212,038 acres of marginal or environmentally sensitive cropland have been converted to trees, grass or wildlife habitat areas.
- 4205 waste management practices have been installed to properly store and manage dry and wet animal waste.
- 1,087 mortality management systems have been installed to properly manage livestock mortalities to minimize water quality impacts.
- 4,472 water control structures have been installed improving water management on and reducing nutrient loss from approximately 331,000 acres.
- 1,436 miles of fencing have been erected, in combination with other practices (e.g., watering sources) to exclude livestock from streams.
- 668,342 acres of cropland have been converted to no-till or conservation tillage to reduce sediment loss associated with traditional practices.
- 17,054 acres of forested riparian buffer have been established to reduce nutrient loss from approximately 68,364 acres of cropland.

- 176 chemical handling and management measures have been installed to provide an environmentally safe means for application, mixing and storing agricultural chemicals.

COMMUNITY CONSERVATION ASSISTANCE PROGRAM SUMMARY



Session Law 2006-78 established the Community Conservation Assistance Program (herein referred to as CCAP). The purpose of the program is to reduce the delivery of nonpoint source (NPS) pollution into the waters of the State by installing best management practices (BMPs) on developed lands not directly involved in agricultural production.

Currently there are 17 best management practices (BMPs) that CCAP utilizes to address the site-specific natural resource concerns of the applicant. These vary in complexity and cost ranging from stream restoration projects to the closing of abandoned wells. The Commission may allocate funds at the state, regional, or local district level. For the 2019 fiscal year, the Commission chose to allocate funds regionally (eastern, central, western) based upon a competitive priority ranking process. The Community Conservation Assistance Program Advisory Committee reviewed the ranking parameters, cost-shared BMPs including their standards and specifications, and general program guidance. This independent advisory committee provides review of existing and potential future policies for the program and makes their recommendations to the Commission, which then decides the program guidelines and functionality.

Districts obligated \$185,040 of state appropriated cost share funds to 12 contracts with cooperators in fiscal year 2019. In addition to the 2019 appropriation, the Commission also had available for allocation (1) funds allocated to districts in 2018 with which districts were unable to execute contracts with cooperators prior to the end of the program year and (2) funds recovered from completed and expired contracts from program years 2016 through 2018. The CCAP infrastructure was also used to implement conservation practices using several other funding sources. In all, districts obligated \$228,052 from all appropriated and grant funds to 20 contracts. Appendix C is a list of 2019 contracts for each county.

2019 was the third year where a competitive regional application process was employed to distribute funds to the local districts. A total of \$185,040 was allocated for projects in the three regions of the state: eastern, central, and western. Based on the highest priority rankings for each region, the number of contracts awarded are as follows:

Eastern	4 contracts funded of 7 submitted
Central	4 contracts funded of 8 submitted
Western	4 contracts funded of 25 submitted

Each contract was capped at \$20,000 per contract. Prior to the 2018 fiscal year, individual district allocations were approximately \$4,500. This increase in funding, while limiting the number of contracts awarded, allowed for funding of larger-scale projects. The differences in the number of contracts above indicates the varying strategies each region employed for submission of projects.

COMMUNITY CONSERVATION ASSISTANCE PROGRAM ACCOMPLISHMENTS

- 273 abandoned well closures preventing groundwater pollution and contamination.

- ❑ 22,906 square feet of backyard rain gardens installed to reduce nutrient and suspended solids runoff.
- ❑ 199 cisterns to reduce volume and velocity flows to adjacent streams and reuse captured runoff water.
- ❑ 41.8 acres of critical area plantings to control erosion, reducing sediment and nutrient loading.
- ❑ 2.83 acres of grassed swales to eliminate gully erosion that deposits sediments and nutrients directly to watercourses.
- ❑ 7,260 linear feet of marsh sills to eliminate shoreline erosion.
- ❑ 7.92 acres of riparian buffer to reduce sediment and nutrient loading from entering streams by slowing the flow of runoff, dropping sediments before entering the stream and allowing the root system to absorb the attached nutrients.
- ❑ 6.8 acres of stormwater wetlands to capture and treat sediments and nutrients, and to reduce volume and velocity flows into adjacent watercourses.
- ❑ 36,518 linear feet of stream restoration and 25,498 linear feet of streambank and shoreline protection to eliminate direct sedimentation into streams by eliminating bank erosion.

AGRICULTURAL WATER RESOURCES ASSISTANCE PROGRAM SUMMARY



The North Carolina Agricultural Water Resources Assistance Program was authorized through Session Law 2011-145, and became effective on July 1, 2011. This program, referred to as AgWRAP, was established to assist farmers and landowners in doing any one or more of the following:

- Identify opportunities to increase water use efficiency, availability and storage;
- Implement best management practices (BMPs) to conserve and protect water resources;
- Increase water use efficiency;
- Increase water storage and availability for agricultural purposes.

Public benefit of this program is achieved by the following:

- Reducing competition for water resources by public users
- Improving the efficient use of water while enabling the industry to produce food, fiber and other agricultural products
- Preparing the agricultural industry to weather future droughts
- Generating and protecting local jobs in agriculture and agribusiness

The Commission allocates funds annually for best management practices at the district level, as well as through statewide and regional application processes. Eligible AgWRAP practices include: agricultural water supply/reuse ponds, agricultural pond repair/retrofits, agricultural pond sediment removals, agricultural water collection and reuse systems, baseflow interceptors (streamside pickups), conservation irrigation conversions, micro-irrigation systems, and water supply wells. In FY2019, the Commission conducted a regional application process (35% of available BMP funding) for agricultural water supply/reuse ponds, agricultural pond repair/retrofits, agricultural water collection and reuse systems, and conservation irrigation system conversions. In addition, the Commission allocated \$776,979 (65% of available BMP funding) to 90 soil and water conservation districts who requested funding for AgWRAP practices using set allocation parameters as specified in the AgWRAP Detailed Implementation Plan.

Districts obligated \$1,601,780 of state appropriated cost share funds to 156 contracts with cooperators in Fiscal Year 2019. In addition to the 2019 appropriation, the Commission also had available for allocation (1) funds allocated to districts in 2018 with which districts were unable to execute contracts with cooperators prior to the end of the program year and (2) funds recovered from completed and expired contracts from program years 2016 through 2018. Appendix C is a list of 2019 contracts for each county.

AGRICULTURAL WATER RESOURCES ASSISTANCE PROGRAM ACCOMPLISHMENTS

- 79 new agricultural water use ponds were installed for water supply for irrigation or livestock watering.
- 38 existing agricultural ponds were repaired, retrofitted or expanded to provide water supply.
- 67 agricultural ponds had sediment removed to increase water storage capacity.
- 354 water supply wells installed to provide a water source for irrigation, livestock and poultry, aquaculture, freeze protection and on-farm processing.
- 39 conservation irrigation system conversions completed to increase water use efficiency and decrease water use.
- 6 baseflow interceptors/streamside pickups to collect and/or store water for agricultural use.
- 10 agricultural water collection and reuse systems were installed for water reuse or irrigation on agricultural operations.

DISASTER RECOVERY FUNDS

Due to the devastating impacts of Hurricane Matthew, Tropical Storms Julia and Hermine, and the western wildfires, the North Carolina General Assembly (NCGA) passed the Disaster Recovery Act of 2016 as [Session Law 2016-124](#) and the Disaster Recovery Act of 2017 as [Session Law 2017-119](#). In 2018, the General Assembly appropriated disaster recovery funds to help implement BMPs that will address the impacts of Hurricane Florence in [Session Law 2018-136](#). In the legislation, the NCGA notes that the State and federal disaster relief initiatives are not intended to make individuals whole after a loss; they are intended to assist the affected areas in recovering from the damage caused by the disasters.

In Fiscal Year 2019, through the ACSP and AgWRAP programs, districts obligated \$3,836,140 in 599 contracts. The numbers below only reflect the portions of these programs that are implemented through the Division's Cost Share Contracting System. Additional funds for these programs were expended through other contractual vehicles.

DISASTER RECOVERY ACT 2016 & 2017 ACCOMPLISHMENTS

- 123 farm roads repaired, expending \$448,375.
- 199 drought pasture renovations completed impacting 2,315 acres, expending \$704,231.
- 9 ponds repaired, expending \$90,449.

HURRICANE FLORENCE DISASTER FUNDS ACCOMPLISHMENTS

- 206 farm roads repaired through 154 contracts, expending \$781,138. Additional road repairs projects have been contracted and installed in FY2020.
- 126 contracts for lagoon management, expending \$1,347,303.

- 46 contracts for pasture renovation completed impacting 1,490 acres, expending \$228,071. Additional pasture renovations have been contracted and installed in FY2020.
- 2 ponds repaired, expending \$39,419. Additional ponds have been contracted and repaired in FY2020.
- 5,328 acres of winter forage planted through 77 contracts, expending \$105,539.

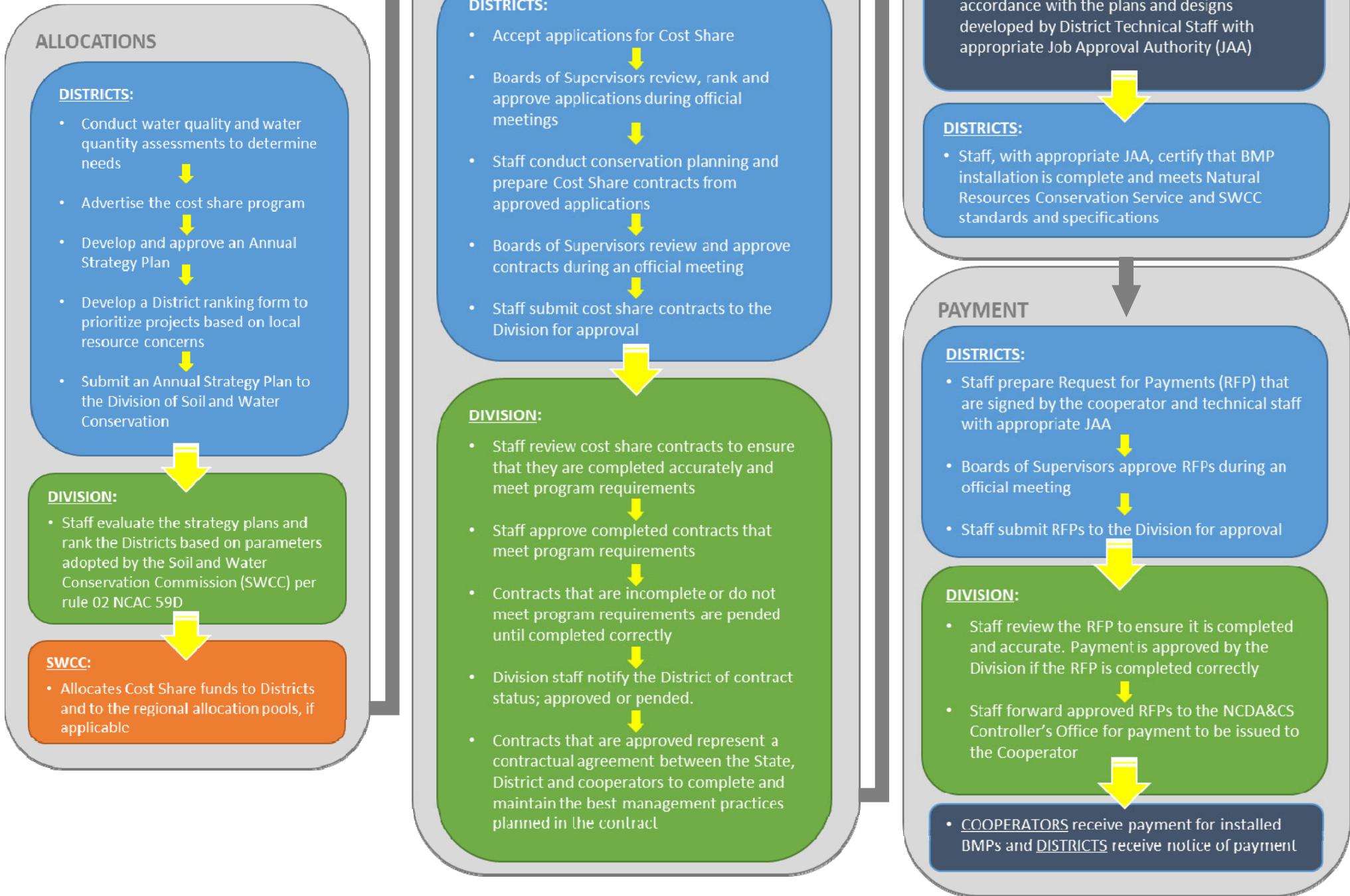
COST SHARE PROGRAMS CONCLUSIONS

The Commission believes Cost Share Programs are being administered cost-effectively and that considerable water quality and water quantity benefits are being realized for the investment made with state funds. ACSP and AgWRAP aid agricultural operations in making essential water quality and water quantity improvements. The cost of the conservation practices installed through these programs cannot be passed on to the consumer in the price of the food or fiber product. ACSP and AgWRAP thereby contribute both to water resource improvement and to sustaining a strong state agricultural economy. CCAP fills a need with voluntary, incentive-based stormwater retrofits where municipal regulatory programs cannot help individual landowners address water quality problems. Where municipalities are hindered by right-of-way and liability issues, CCAP can offer relief to homeowners and businesses to protect their properties and improve water quality. The Commission continues to emphasize prioritizing, targeting, accountability, leveraging, and adaptability in managing these public funds to further improve the water quality and quantity benefits intended by the General Assembly.

Increased costs of fuel, labor, and materials have significantly impacted the amount of conservation all three programs can implement and the number of cooperators who can be assisted. In the past decade, the appropriations to the ACSP have been reduced by over \$1.1 million. The Commission has taken actions that have helped to offset these impacts in the short-term, but the Commission is still unable to meet over \$20 million requested. ACSP and AgWRAP continue to play a vital role in assisting farmers and ranchers with voluntary water quality protection and water resource improvement and with compliance with state and federal regulatory requirements. CCAP functions as the only program that provides relief to individual property owners that are affected by offsite increased stormwater that state and local watershed-level regulations cannot address. These programs are our state's cornerstone in efforts to support resiliency and stewardship for the benefit of water quality and quantity and all the citizens of the state of North Carolina.

SOIL AND WATER CONSERVATION COMMISSION COST SHARE PROGRAMS

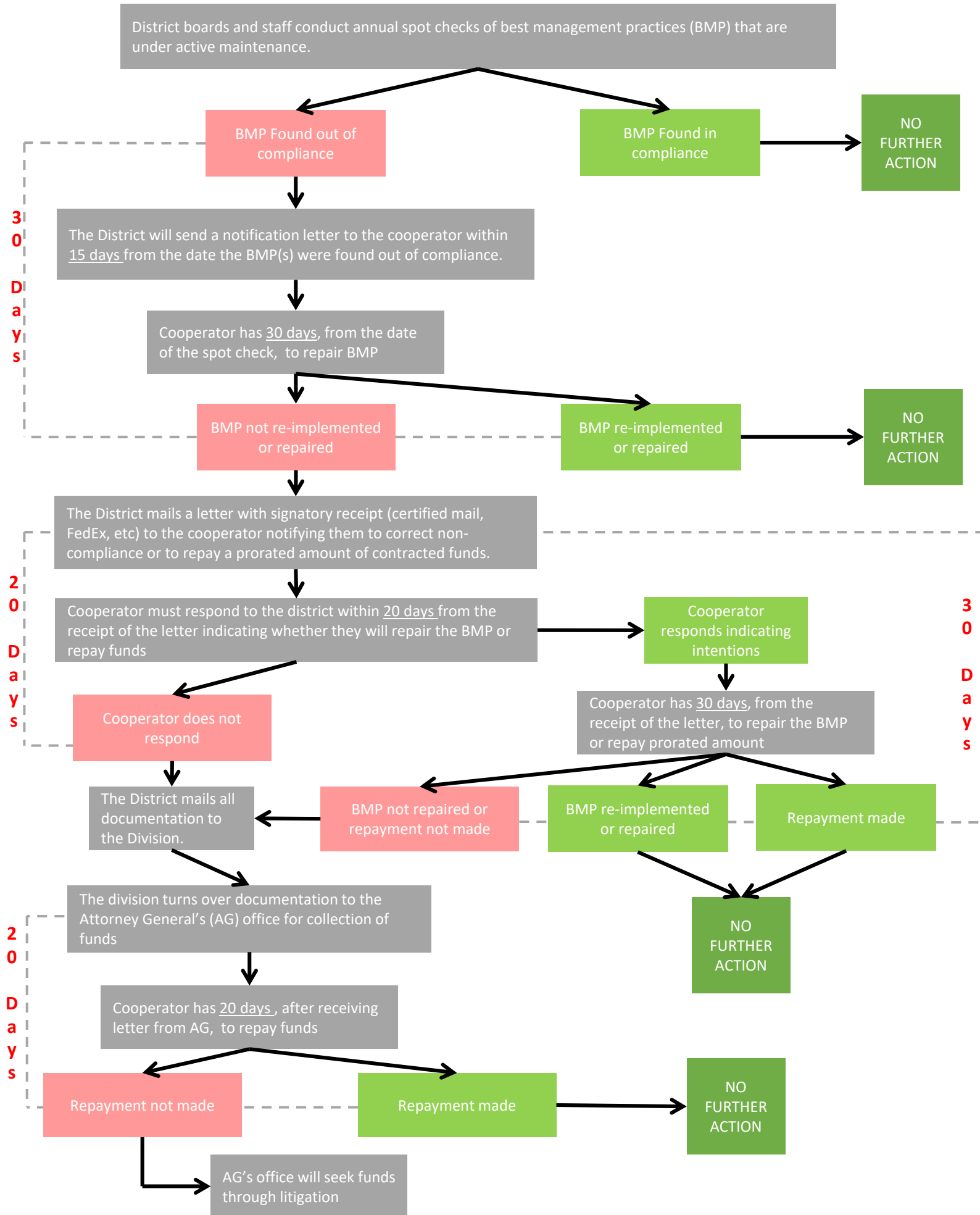
Funding Process



SOIL AND WATER CONSERVATION COMMISSION COST SHARE PROGRAMS

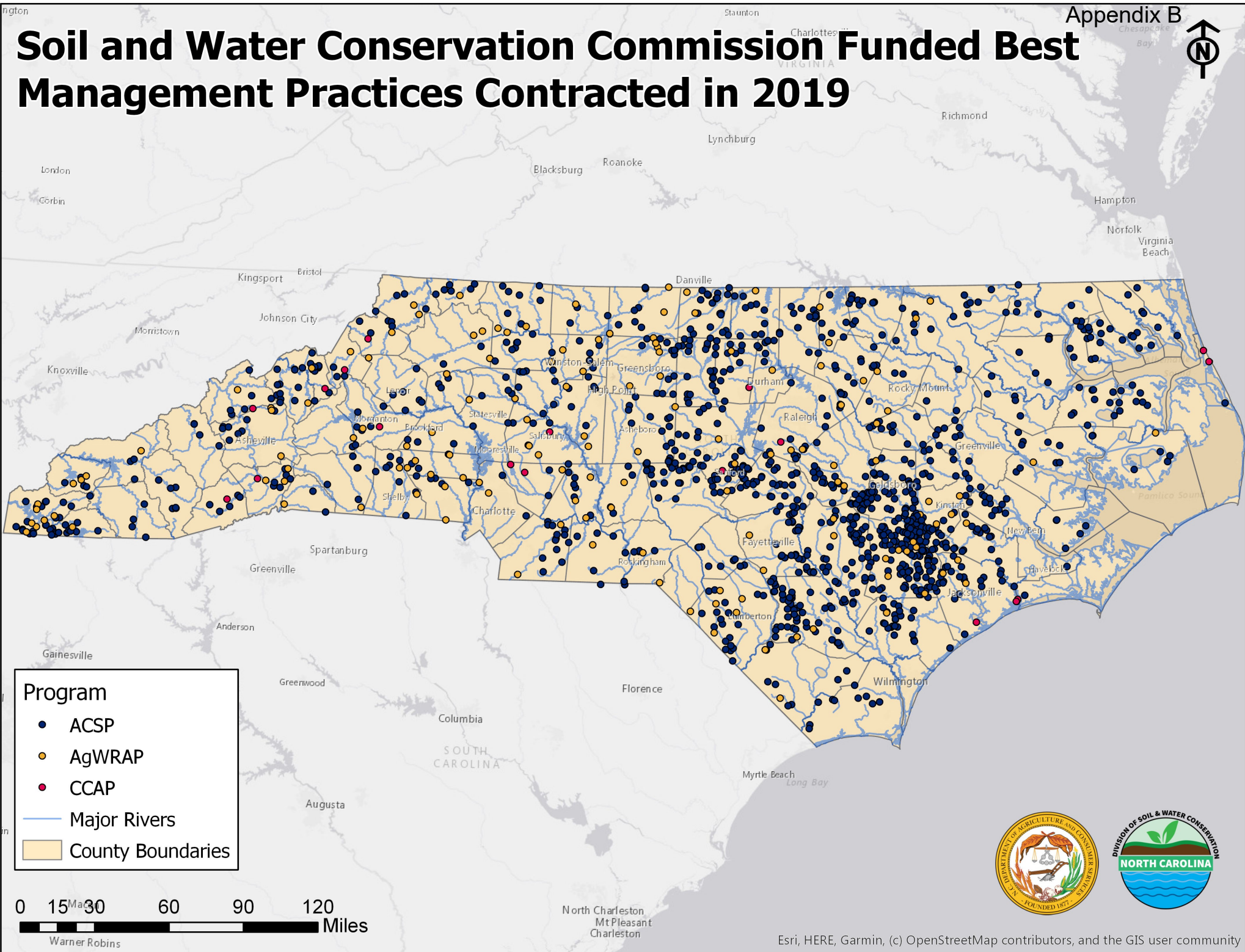
Appendix A

Compliance Process



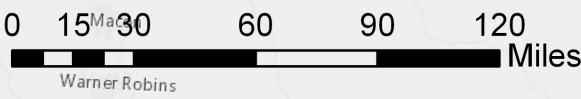


Soil and Water Conservation Commission Funded Best Management Practices Contracted in 2019



Program

- ACSP
- AgWRAP
- CCAP
- Major Rivers
- County Boundaries



Fiscal Year: 2019

Programs: Agriculture Cost Share Program (ACSP), Community Conservation Assistance Program (CCAP), Agricultural Water Resources Assistance Program (AgWRAP)

Contract Number	Program	Best Management Practice	Planned	Unit	Cost
County : 00-YANCEY					
00-2019-001	ACSP	Agricultural Road Repair/Stabilization	125	LinFT	\$3,080
		Spring Development	1	EACH	\$835
00-2019-002	ACSP	Agricultural Road Repair/Stabilization	425	LinFT	\$5,035
00-2019-003	ACSP	Spring Development	2	EACH	\$915
		Watering Tanks (Troughs)	2	EACH	\$4,510
00-2019-004	ACSP	Livestock Exclusion Fencing	900	LinFT	\$2,187
		Livestock Feeding Area	1	EACH	\$6,370
		Watering Tanks (Troughs)	3	EACH	\$4,949
		Stream Protection Well	1	EACH	\$7,587
00-2019-005	ACSP	Livestock Exclusion Fencing	2600	LinFT	\$6,318
		Livestock Feeding Area	2	EACH	\$12,738
		Spring Development	2	EACH	\$3,248
		Watering Tanks (Troughs)	3	EACH	\$4,901
00-2019-007	ACSP	Drought Pasture Renovation	5	ACRE	\$1,125
00-2019-008	ACSP	Drought Pasture Renovation	10	ACRE	\$2,250
00-2019-009	ACSP	Disaster Pasture Renovation	10	ACRE	\$2,250
00-2019-010	ACSP	Drought Pasture Renovation	15	ACRE	\$3,375
00-2019-011	ACSP	Drought Pasture Renovation	25	ACRE	\$5,625
00-2019-012	ACSP	Drought Pasture Renovation	28.4	ACRE	\$6,375
00-2019-801	AgWRAP	Water Supply Well & Pump	1	EACH	\$7,500
County : 01-ALAMANCE					
01-2019-001	ACSP	Cropland Conversion - Grass	6.4	ACRE	\$1,440
01-2019-002	ACSP	Sod-Based Rotation - 5 Year SBR (41 months)	10	ACRE	\$1,750
01-2019-003	ACSP	Grassed Waterway	0.68	ACRE	\$2,137
01-2019-004	ACSP	Field Border	0.66	ACRE	\$3,510
		Grassed Waterway	1.2	ACRE	\$3,240
		Sod-Based Rotation - 5 Year SBR (41 months)	6	ACRE	\$1,050
01-2019-005	ACSP	Livestock Exclusion Fencing	1350	LinFT	\$9,685
01-2019-006	ACSP	Cover Crops	50	ACRE	\$2,000
01-2019-007	ACSP	Cover Crops	50	ACRE	\$2,000
01-2019-008	ACSP	Cover Crops	50	ACRE	\$2,000
01-2019-009	ACSP	Closure - Waste Impoundments	1	EACH	\$7,735
01-2019-010	ACSP	Cropland Conversion - Trees	13	ACRE	\$1,414
01-2019-011	ACSP	Sod-Based Rotation - 5 Year SBR (41 months)	21	ACRE	\$3,675
01-2019-012	ACSP	Cover Crops	50	ACRE	\$1,756
01-2019-013	ACSP	Disaster Pasture Renovation	50	ACRE	\$6,900
01-2019-014	ACSP	Disaster Pasture Renovation	5.5	ACRE	\$4,071
01-2019-015	ACSP	Disaster Pasture Renovation	18.5	ACRE	\$1,038
01-2019-016	ACSP	Disaster Pasture Renovation	46	ACRE	\$6,348
01-2019-017	ACSP	Disaster Pasture Renovation	29	ACRE	\$4,002
01-2019-018	ACSP	Disaster Pasture Renovation	78	ACRE	\$10,764
01-2019-019	ACSP	Disaster Pasture Renovation	57	ACRE	\$7,866
01-2019-020	ACSP	Disaster Pasture Renovation	26.6	ACRE	\$3,671
01-2019-021	ACSP	Disaster Pasture Renovation	66.3	ACRE	\$9,149
01-2019-022	ACSP	Disaster Pasture Renovation	15	ACRE	\$2,070

Appendix C

Contract Number	Program	Best Management Practice	Planned	Unit	Cost
01-2019-023	ACSP	Disaster Pasture Renovation	42.7	ACRE	\$5,893
01-2019-024	ACSP	Disaster Pasture Renovation	32.4	ACRE	\$4,457
County : 02-ALEXANDER					
02-2019-001	ACSP	Livestock Mortality Management System - Composter	1	EACH	\$9,441
		Dry Stack	1	EACH	\$32,917
02-2019-002	ACSP	Livestock Exclusion Fencing	1	LinFT	\$729
		Watering Tanks (Troughs)	1	EACH	\$3,605
02-2019-003	ACSP	Dry Stack	1	EACH	\$15,660
02-2019-801	AgWRAP	Water Supply Well & Pump	500	EACH	\$7,500
02-2019-802	AgWRAP	Water Supply Well & Pump	1	EACH	\$14,999
County : 03-ALLEGHANY					
03-2019-001	ACSP	Waste Treatment Storage Pond	1	EACH	\$30,816
03-2019-002	ACSP	Pasture Renovation	20	ACRE	\$6,000
03-2019-003	ACSP	Agricultural Road Repair/Stabilization	1375	LinFT	\$14,509
		Cropland Conversion - Grass	11.5	ACRE	\$1,350
		Pasture Renovation	2.92	ACRE	\$2,100
03-2019-100	ACSP	Disaster Lagoon Management Incentive	3210	GALLONS	\$3,210
03-2019-101	ACSP	Non-Field Farm Road Repair	1	EACH	\$12,511
		Disaster Lagoon Management Incentive	1420	GALLONS	\$1,420
03-2019-102	ACSP	Non-Field Farm Road Repair	1	EACH	\$23,682
03-2019-801	AgWRAP	Water Supply Well & Pump	1	EACH	\$7,200
County : 04-ANSON					
04-2019-001	ACSP	Heavy Use Area Protection	4	EACH	\$6,244
		Livestock Exclusion Fencing	3150	LinFT	\$7,031
		Watering Tanks (Troughs)	4	EACH	\$6,759
04-2019-002	ACSP	Livestock Mortality Management System - Mortality Incinerator	1	EACH	\$8,631
04-2019-004	ACSP	Dry Stack	1	EACH	\$13,851
04-2019-008	ACSP	Dry Stack	1	EACH	\$19,640
04-2019-501	AgWRAP	Water Supply Well & Pump	1	EACH	\$7,499
04-2019-801	ACSP	Disaster Pasture Renovation	35	ACRE	\$3,424
County : 05-ASHE					
05-2019-001	ACSP	Agricultural Road Repair/Stabilization	100	LinFT	\$3,897
		Pasture Renovation	15	ACRE	\$5,400
		Livestock Exclusion Fencing	50	LinFT	\$146
		Watering Tanks (Troughs)	3	EACH	\$9,234
		Stream Protection Well	1	EACH	\$6,225
05-2019-002	ACSP	Spring Development	3	EACH	\$2,485
		Watering Tanks (Troughs)	6	EACH	\$14,969
05-2019-003	ACSP	Livestock Exclusion Fencing	1200	LinFT	\$2,916
		Stream Crossing	1	UNITS	\$2,136
		Watering Tanks (Troughs)	4	EACH	\$8,921
05-2019-801	AgWRAP	Water Supply Well & Pump	1	EACH	\$6,900
05-2019-802	AgWRAP	Water Supply Well & Pump	1	EACH	\$6,900
County : 06-AVERY					
06-2019-001	ACSP	Heavy Use Area Protection	2	EACH	\$2,351

Appendix C

Contract Number	Program	Best Management Practice	Planned	Unit	Cost
		Livestock Exclusion Fencing	200	LinFT	\$432
		Watering Tanks (Troughs)	2	EACH	\$1,282
		Stream Protection Well	600	EACH	\$923
06-2019-002	<i>ACSP</i>	Agricultural Road Repair/Stabilization	400	LinFT	\$7,508
		Conservation Cover	8	ACRE	\$1,260
06-2019-003	<i>ACSP</i>	Agricultural Road Repair/Stabilization	2000	LinFT	\$26,056
06-2019-501	<i>CCAP</i>	Stormwater wetlands	800	EACH	\$20,000
06-2019-801	<i>AgWRAP</i>	Water Supply Well & Pump	1	EACH	\$7,500
County : 07-BEAUFORT					
07-2019-001	<i>ACSP</i>	Cover Crops	74.2	ACRE	\$2,968
07-2019-002	<i>ACSP</i>	Cover Crops	9.94	ACRE	\$576
07-2019-003	<i>ACSP</i>	Cover Crops	22.42	ACRE	\$897
07-2019-004	<i>ACSP</i>	Cover Crops	49.92	ACRE	\$1,997
07-2019-005	<i>ACSP</i>	Cover Crops	100	ACRE	\$4,000
07-2019-006	<i>ACSP</i>	Cover Crops	100.1	ACRE	\$4,004
07-2019-007	<i>ACSP</i>	Water Control Structure	3	EACH	\$7,078
		Land Smoothing	50	ACRE	\$9,375
07-2019-008	<i>ACSP</i>	Water Control Structure	1	EACH	\$14,612
07-2019-009	<i>ACSP</i>	Filter Strip	1	ACRE	\$2,407
07-2019-801	<i>AgWRAP</i>	Water Supply Well & Pump	1	EACH	\$7,499
County : 08-BERTIE					
08-2019-001	<i>ACSP</i>	Abandoned Well Closure	1	EACH	\$3,000
08-2019-002	<i>ACSP</i>	Abandoned Well Closure	1	EACH	\$1,500
08-2019-003	<i>ACSP</i>	Grassed Waterway	1.24	ACRE	\$3,814
08-2019-004	<i>ACSP</i>	Three Year Conservation Tillage for Grain and Cotton	45.8	ACRE	\$4,057
08-2019-005	<i>ACSP</i>	Field Border	0.8	ACRE	\$1,890
		Grassed Waterway	2.8	ACRE	\$7,770
		Diversion	2100	LinFT	\$5,228
08-2019-006	<i>ACSP</i>	Field Border	1.48	ACRE	\$3,863
		Grassed Waterway	0.65	ACRE	\$1,731
County : 09-BLADEN					
09-2019-110	<i>ACSP</i>	Cropland Conversion - Grass	30	ACRE	\$6,750
09-2019-111	<i>ACSP</i>	Cropland Conversion - Grass	45.2	ACRE	\$12,204
09-2019-112	<i>ACSP</i>	Critical Area Planting	1	ACRE	\$7,061
09-2019-113	<i>ACSP</i>	Cropland Conversion - Grass	16	ACRE	\$3,600
09-2019-114	<i>ACSP</i>	Cropland Conversion - Grass	8.04	ACRE	\$2,172
09-2019-116	<i>ACSP</i>	Cropland Conversion - Grass	30.3	ACRE	\$6,818
09-2019-117	<i>ACSP</i>	Cropland Conversion - Grass	15	ACRE	\$3,375
09-2019-201	<i>ACSP</i>	Non-Field Farm Road Repair	1	EACH	\$4,573
09-2019-202	<i>ACSP</i>	Non-Field Farm Road Repair	1	EACH	\$3,092
09-2019-203	<i>ACSP</i>	Non-Field Farm Road Repair	1	EACH	\$7,317
09-2019-204	<i>ACSP</i>	Non-Field Farm Road Repair	1	EACH	\$2,968
09-2019-205	<i>ACSP</i>	Non-Field Farm Road Repair	1	EACH	\$9,591
09-2019-207	<i>ACSP</i>	Non-Field Farm Road Repair	1	EACH	\$1,197
09-2019-208	<i>ACSP</i>	Non-Field Farm Road Repair	1	EACH	\$3,784
09-2019-209	<i>ACSP</i>	Non-Field Farm Road Repair	1	EACH	\$5,604
09-2019-210	<i>ACSP</i>	Non-Field Farm Road Repair	1	EACH	\$18,930
09-2019-212	<i>ACSP</i>	Non-Field Farm Road Repair	1	EACH	\$2,551
09-2019-213	<i>ACSP</i>	Non-Field Farm Road Repair	1	EACH	\$4,406

Appendix C

Contract Number	Program	Best Management Practice	Planned	Unit	Cost
09-2019-215	ACSP	Non-Field Farm Road Repair		1 EACH	\$962
09-2019-216	ACSP	Non-Field Farm Road Repair		1 EACH	\$4,663
09-2019-217	ACSP	Non-Field Farm Road Repair		1 EACH	\$7,481
09-2019-218	ACSP	Non-Field Farm Road Repair		1 EACH	\$6,400
09-2019-219	ACSP	Non-Field Farm Road Repair		1 EACH	\$7,153
09-2019-220	ACSP	Non-Field Farm Road Repair		1 EACH	\$7,590
09-2019-221	ACSP	Non-Field Farm Road Repair		1 EACH	\$10,014
09-2019-222	ACSP	Non-Field Farm Road Repair		1 EACH	\$3,712
09-2019-223	ACSP	Non-Field Farm Road Repair		1 EACH	\$4,040
09-2019-224	ACSP	Non-Field Farm Road Repair		1 EACH	\$5,023
09-2019-225	ACSP	Non-Field Farm Road Repair		1 EACH	\$6,242
09-2019-226	ACSP	Non-Field Farm Road Repair		1 EACH	\$12,078
09-2019-227	ACSP	Non-Field Farm Road Repair		1 EACH	\$9,591
09-2019-229	ACSP	Non-Field Farm Road Repair		1 EACH	\$2,656
09-2019-230	ACSP	Non-Field Farm Road Repair		1 EACH	\$11,463
09-2019-231	ACSP	Non-Field Farm Road Repair		1 EACH	\$7,590
09-2019-232	ACSP	Non-Field Farm Road Repair		1 EACH	\$4,045
09-2019-233	ACSP	Non-Field Farm Road Repair		1 EACH	\$4,044
09-2019-234	ACSP	Non-Field Farm Road Repair		1 EACH	\$10,229
09-2019-235	ACSP	Non-Field Farm Road Repair		1 EACH	\$2,579
09-2019-236	ACSP	Non-Field Farm Road Repair		2 EACH	\$6,126
09-2019-237	ACSP	Non-Field Farm Road Repair		1 EACH	\$14,773
09-2019-238	ACSP	Non-Field Farm Road Repair		1 EACH	\$46,395
09-2019-401	ACSP	Disaster Winter Forage Crop Incentive		43 ACRE	\$645
09-2019-402	ACSP	Disaster Winter Forage Crop Incentive		52 ACRE	\$1,040
09-2019-501	ACSP	Disaster Pasture Renovation		22 ACRE	\$4,725
09-2019-502	ACSP	Disaster Pasture Renovation		20 ACRE	\$4,500
09-2019-503	ACSP	Disaster Pasture Renovation		62.25 ACRE	\$14,007
09-2019-504	ACSP	Disaster Pasture Renovation		7.5 ACRE	\$1,688
09-2019-601	ACSP	Disaster Lagoon Management Incentive		4975000 GALLONS	\$23,434
09-2019-602	ACSP	Disaster Lagoon Management Incentive		6900000 GALLONS	\$3,450
09-2019-603	ACSP	Disaster Lagoon Management Incentive		676400 GALLONS	\$3,382
09-2019-604	ACSP	Disaster Lagoon Management Incentive		890970 GALLONS	\$4,455
09-2019-605	ACSP	Disaster Lagoon Management Incentive		930936 GALLONS	\$4,655
09-2019-606	ACSP	Disaster Lagoon Management Incentive		10571046 GALLONS	\$51,355
09-2019-607	ACSP	Disaster Lagoon Management Incentive		1570900 GALLONS	\$7,855
09-2019-801	AgWRAP	Water Supply Well & Pump		1 EACH	\$5,685
09-2019-802	AgWRAP	Water Supply Well & Pump		1 EACH	\$5,798
County : 10-BRUNSWICK					
10-2019-001	ACSP	Long-Term No-till		24.6 ACRE	\$3,690
10-2019-002	ACSP	Disaster Winter Forage Crop Incentive		74.5 ACRE	\$1,490
10-2019-003	ACSP	Disaster Pasture Renovation		10 ACRE	\$2,250
10-2019-004	ACSP	Long-Term No-till		165.9 ACRE	\$24,885
10-2019-007	ACSP	Emergency Access Restoration		1 EACH	\$2,162
10-2019-008	ACSP	Emergency Access Restoration		150 EACH	\$2,222
10-2019-009	ACSP	Emergency Access Restoration		129 EACH	\$1,911
10-2019-010	ACSP	Emergency Access Restoration		96 EACH	\$2,956

Appendix C

Contract Number	Program	Best Management Practice	Planned	Unit	Cost
10-2019-011	ACSP	Emergency Access Restoration	1	EACH	\$5,186
County : 11-BUNCOMBE					
11-2019-001	ACSP	Heavy Use Area Protection	2	EACH	\$1,674
11-2019-002	ACSP	Heavy Use Area Protection	1	EACH	\$2,425
		Stock Trails & Walkways	200	LinFT	\$3,110
11-2019-003	ACSP	Pastureland Conversion	2.75	ACRE	\$582
		Livestock Exclusion Fencing	5500	LinFT	\$16,481
		Watering Tanks (Troughs)	3	EACH	\$6,527
11-2019-005	ACSP	Livestock Exclusion Fencing	3250	LinFT	\$11,938
11-2019-006	ACSP	Livestock Exclusion Fencing	350	LinFT	\$10,100
11-2019-007	ACSP	Livestock Exclusion Fencing	1850	LinFT	\$6,309
		Stream Crossing	1	UNITS	\$1,993
11-2019-008	ACSP	Streambank and Shoreline Protection	110	LinFT	\$6,202
11-2019-009	ACSP	Spring Development	1	EACH	\$2,661
11-2019-802	AgWRAP	Water Supply Well & Pump	1	EACH	\$7,500
11-2019-803	AgWRAP	Agriculture Pond Repair/Retrofit	1	EACH	\$25,000
11-2019-899	AgWRAP	Ag Water Collection System	1	EACH	\$1,262
County : 12-BURKE					
12-2019-001	ACSP	Grade Stabilization Structure	1	EACH	\$2,575
		Grassed Waterway	0.2	ACRE	\$1,698
		Rock-lined Outlet	1	EACH	\$465
		Critical Area Planting	0.2	ACRE	\$327
12-2019-002	ACSP	Agricultural Road Repair/Stabilization	75	LinFT	\$1,906
		Grassed Waterway	0.28	ACRE	\$8,463
		Diversion	100	LinFT	\$597
		Pasture Renovation	2.1	ACRE	\$1,103
		Stormwater Management System	1	EACH	\$994
		Heavy Use Area Protection	1	EACH	\$4,420
		Livestock Exclusion Fencing	369	LinFT	\$742
		Stock Trails & Walkways	378	LinFT	\$6,393
12-2019-003	ACSP	Watering Tanks (Troughs)	3	EACH	\$5,512
		Grade Stabilization Structure	1	EACH	\$794
		Grassed Waterway	0.14	ACRE	\$4,444
		Water Control Structure	1	EACH	\$2,534
		Livestock Exclusion Fencing	750	LinFT	\$1,266
12-2019-004	ACSP	Stock Trails & Walkways	20	LinFT	\$228
		Livestock Exclusion Fencing	200	LinFT	\$486
		Watering Tanks (Troughs)	2	EACH	\$5,831
12-2019-005	ACSP	Stream Restoration	125	LinFT	\$10,038
12-2019-501	CCAP	Stormwater wetlands	1	EACH	\$20,000
12-2019-801	AgWRAP	Water Supply Well & Pump	1	EACH	\$12,375
		Ag Water Collection System	1		\$263
County : 13-CABARRUS					
13-2019-002	ACSP	Livestock Exclusion Fencing	3070	LinFT	\$6,079
		Watering Tanks (Troughs)	4	EACH	\$11,276
		Stream Protection Well	1	EACH	\$6,225
13-2019-004	ACSP	Waste Application Systems - Mobile Application System	1	EACH	\$10,500
13-2019-005	ACSP	Livestock Exclusion Fencing	5410	LinFT	\$24,593

Appendix C

Contract Number	Program	Best Management Practice	Planned	Unit	Cost
		Watering Tanks (Troughs)	2	EACH	\$3,046
13-2019-501	CCAP	Grassed Swale	1875	SqFt	\$7,010
13-2019-502	CCAP	Cisterns	1	EACH	\$0
13-2019-803	AgWRAP	Water Supply Well & Pump	1	EACH	\$7,498
County : 14-CALDWELL					
14-2019-001	ACSP	Watering Tanks (Troughs)	5	EACH	\$4,584
14-2019-002	ACSP	Stream Crossing	1	UNITS	\$5,389
		Stock Trails & Walkways	29	LinFT	\$1,274
14-2019-003	ACSP	Heavy Use Area Protection	1	EACH	\$8,389
		Livestock Exclusion Fencing	500	LinFT	\$900
		Stock Trails & Walkways	200	LinFT	\$2,798
14-2019-004	ACSP	Critical Area Planting	0.1	ACRE	\$94
		Livestock Exclusion Fencing	3100	LinFT	\$13,945
		Stream Crossing	2	UNITS	\$8,731
		Watering Tanks (Troughs)	2	EACH	\$2,820
14-2019-005	ACSP	Caldwell District BMP C&S	1	EACH	\$11,775
14-2019-006	ACSP	Agrichemical Handling Facility	1	EACH	\$21,764
14-2019-801	AgWRAP	Water Supply Well & Pump	1	EACH	\$7,500
County : 15-CAMDEN					
15-2019-001	ACSP	Cover Crops	51.7	ACRE	\$2,068
15-2019-002	ACSP	Cover Crops	257.2	ACRE	\$10,288
15-2019-003	ACSP	Cover Crops	278.8	ACRE	\$11,152
15-2019-004	ACSP	Land Smoothing	50.8	ACRE	\$7,620
County : 16-CARTERET					
16-2019-001	ACSP	Non-Field Farm Road Repair	1	EACH	\$4,231
16-2019-002	ACSP	Crop Residue Management	17.75	ACRE	\$6,547
16-2019-801	AgWRAP	Water Supply Well & Pump	1	EACH	\$7,500
County : 17-CASWELL					
17-2019-001	ACSP	Cropland Conversion - Trees	8.5	ACRE	\$924
17-2019-002	ACSP	Cropland Conversion - Trees	5	ACRE	\$399
17-2019-003	ACSP	Pastureland Conversion	26	ACRE	\$2,663
17-2019-004	ACSP	Heavy Use Area Protection	1	EACH	\$1,446
		Livestock Exclusion Fencing	630	LinFT	\$1,041
		Watering Tanks (Troughs)	1	EACH	\$1,279
17-2019-005	ACSP	Sod-Based Rotation - 5 Year SBR (41 months)	11.5	ACRE	\$2,013
17-2019-006	ACSP	Cropland Conversion - Grass	13.34	ACRE	\$3,002
17-2019-007	ACSP	Field Border	0.56	ACRE	\$1,512
		Critical Area Planting	0.55	ACRE	\$1,485
17-2019-008	ACSP	Field Border	0.74	ACRE	\$1,998
		Critical Area Planting	0.37	ACRE	\$1,000
17-2019-009	ACSP	Field Border	0.9	ACRE	\$2,430
		Critical Area Planting	0.21	ACRE	\$568
17-2019-010	ACSP	Field Border	0.91	ACRE	\$2,459
		Critical Area Planting	0.2	ACRE	\$541
17-2019-011	ACSP	Field Border	0.31	ACRE	\$816
		Critical Area Planting	0.81	ACRE	\$2,187
17-2019-012	ACSP	Field Border	0.49	ACRE	\$1,323
		Critical Area Planting	0.62	ACRE	\$1,675

Appendix C

Contract Number	Program	Best Management Practice	Planned	Unit	Cost
17-2019-013	ACSP	Field Border	1	ACRE	\$2,701
		Critical Area Planting	0.11	ACRE	\$296
17-2019-014	ACSP	Field Border	0.51	ACRE	\$1,376
		Critical Area Planting	0.6	ACRE	\$1,621
17-2019-015	ACSP	Field Border	0.76	ACRE	\$2,053
		Critical Area Planting	0.35	ACRE	\$944
17-2019-016	ACSP	Field Border	0.8	ACRE	\$2,160
		Critical Area Planting	0.31	ACRE	\$837
17-2019-017	ACSP	Field Border	0.44	ACRE	\$1,189
		Critical Area Planting	0.67	ACRE	\$1,808
17-2019-018	ACSP	Critical Area Planting	1.11	ACRE	\$0
17-2019-019	ACSP	Field Border	1	ACRE	\$2,701
		Critical Area Planting	0.11	ACRE	\$296
17-2019-020	ACSP	Cropland Conversion - Trees	10	ACRE	\$713
17-2019-021	ACSP	Pastureland Conversion	30.7	ACRE	\$2,967
17-2019-022	AgWRAP	Water Supply Well & Pump	1	EACH	\$10,007
17-2019-023	AgWRAP	Water Supply Well & Pump	1	EACH	\$10,007
County : 18-CATAWBA					
18-2019-001	ACSP	Heavy Use Area Protection	4	EACH	\$3,651
		Livestock Exclusion Fencing	5200	LinFT	\$10,452
		Stream Crossing	1	UNITS	\$3,363
		Watering Tanks (Troughs)	4	EACH	\$9,030
		Stream Protection Well	1	EACH	\$7,918
18-2019-002	ACSP	Heavy Use Area Protection	2	EACH	\$801
		Livestock Exclusion Fencing	500	LinFT	\$1,215
		Watering Tanks (Troughs)	2	EACH	\$2,963
		Stream Protection Well	1	EACH	\$6,163
18-2019-003	ACSP	Heavy Use Area Protection	2	EACH	\$0
		Livestock Exclusion Fencing	480	LinFT	\$0
		Watering Tanks (Troughs)	2	EACH	\$0
		Stream Protection Well	1	EACH	\$0
18-2019-801	AgWRAP	Water Supply Well & Pump	1	EACH	\$6,128
18-2019-802	AgWRAP	Water Supply Well & Pump	1	EACH	\$6,126
County : 19-CHATHAM					
19-2019-002	ACSP	Rooftop Runoff Management System	3	EACH	\$105
		Heavy Use Area Protection	1	EACH	\$8,468
		Stock Trails & Walkways	185	LinFT	\$3,104
19-2019-006	ACSP	Critical Area Planting	0.1	ACRE	\$94
		Livestock Mortality Management System - Composter	1	EACH	\$792
		Dry Stack	1	EACH	\$40,098
19-2019-007	ACSP	Livestock Mortality Management System - Mortality Incinerator	1	EACH	\$9,926
19-2019-008	ACSP	Heavy Use Area Protection	1	EACH	\$664
		Livestock Exclusion Fencing	510	LinFT	\$1,002
		Watering Tanks (Troughs)	1	EACH	\$2,266
19-2019-202	ACSP	Disaster Winter Forage Crop Incentive	18.9	ACRE	\$378
		Disaster Pasture Renovation	3.1	ACRE	\$698
19-2019-204	ACSP	Disaster Pasture Renovation	23.1	ACRE	\$5,198
19-2019-205	ACSP	Non-Field Farm Road Repair	1	EACH	\$7,493
19-2019-206	ACSP	Non-Field Farm Road Repair	1	EACH	\$7,494

Appendix C

Contract Number	Program	Best Management Practice	Planned	Unit	Cost
19-2019-207	ACSP	Disaster Pasture Renovation	89.7	ACRE	\$20,183
19-2019-208	ACSP	Disaster Pasture Renovation	16.1	ACRE	\$3,623
19-2019-209	ACSP	Disaster Pasture Renovation	29	ACRE	\$6,525
19-2019-801	AgWRAP	Water Supply Well & Pump	1	EACH	\$7,499
County : 20-CHEROKEE					
20-2019-001	ACSP	Agricultural Road Repair/Stabilization	350	LinFT	\$3,850
		Heavy Use Area Protection	1	EACH	\$4,891
20-2019-002	ACSP	Agricultural Road Repair/Stabilization	75	LinFT	\$875
		Livestock Feeding Area	1	EACH	\$892
20-2019-003	ACSP	Agricultural Road Repair/Stabilization	15	LinFT	\$298
		Heavy Use Area Protection	1	EACH	\$741
20-2019-004	ACSP	Agricultural Road Repair/Stabilization	300	LinFT	\$4,063
20-2019-005	ACSP	Heavy Use Area Protection	1	EACH	\$3,524
20-2019-006	ACSP	Agricultural Road Repair/Stabilization	300	LinFT	\$3,313
20-2019-007	ACSP	Drought Pasture Renovation	10	ACRE	\$2,250
20-2019-008	ACSP	Drought Pasture Renovation	10	ACRE	\$2,250
20-2019-009	ACSP	Drought Pasture Renovation	10	ACRE	\$2,250
20-2019-010	ACSP	Heavy Use Area Protection	1	EACH	\$3,850
20-2019-011	ACSP	Agricultural Road Repair/Stabilization	400	LinFT	\$5,200
20-2019-012	ACSP	Drought Pasture Renovation	10	ACRE	\$2,250
		Disaster Agricultural Pond Repair/Retrofit	0	JOB	\$0
20-2019-013	ACSP	Livestock Exclusion Fencing	1400	LinFT	\$3,402
		Spring Development	1	EACH	\$163
		Watering Tanks (Troughs)	1	EACH	\$3,161
20-2019-014	ACSP	Stream Crossing	1	UNITS	\$355
20-2019-015	ACSP	Watering Tanks (Troughs)	2	EACH	\$3,170
20-2019-016	ACSP	Agricultural Road Repair/Stabilization	300	LinFT	\$3,983
		Heavy Use Area Protection	1	EACH	\$5,186
20-2019-017	ACSP	Livestock Feeding Area	1	EACH	\$2,213
		Stream Crossing	1	UNITS	\$548
20-2019-018	ACSP	Livestock Feeding Area	1	EACH	\$1,852
		Stream Crossing	1	UNITS	\$1,194
20-2019-019	ACSP	Livestock Exclusion Fencing	1100	LinFT	\$2,235
		Stream Crossing	1	UNITS	\$1,448
20-2019-020	ACSP	Heavy Use Area Protection	1	EACH	\$1,387
		Spring Development	1	EACH	\$1,990
20-2019-021	ACSP	Agricultural Road Repair/Stabilization	200	LinFT	\$2,658
20-2019-801	AgWRAP	District BMPs	2084	EACH	\$1,250
20-2019-802	AgWRAP	District BMP- Micro-Irrigation System for Greenhouse/High Tunnel	1200	LnFT	\$720
20-2019-803	AgWRAP	District BMPs	1	EACH	\$576
20-2019-804	AgWRAP	District BMP- Micro-Irrigation System for Greenhouse/High Tunnel	1	LnFT	\$1,107
20-2019-805	AgWRAP	District BMP- Micro-Irrigation System for Greenhouse/High Tunnel	1	LnFT	\$1,250
20-2019-806	AgWRAP	District BMP- Micro-Irrigation System for Greenhouse/High Tunnel	1	LnFT	\$1,051
20-2019-807	AgWRAP	District BMP- Micro-Irrigation System for Greenhouse/High Tunnel	2045	LnFT	\$1,227
County : 21-CHOWAN					
21-2019-001	ACSP	Cover Crops	61.82	ACRE	\$2,472
		Land Smoothing	31	ACRE	\$4,650

Appendix C

Contract Number	Program	Best Management Practice	Planned	Unit	Cost
21-2019-002	ACSP	Cover Crops	162.29	ACRE	\$6,492
21-2019-003	ACSP	Crop Residue Management	28	ACRE	\$420
21-2019-004	ACSP	Crop Residue Management	228.79	ACRE	\$3,433
21-2019-005	ACSP	Long-Term No-till	43.2	ACRE	\$6,731
21-2019-006	ACSP	Land Smoothing	40	ACRE	\$7,500
21-2019-007	ACSP	Land Smoothing	35.9	ACRE	\$6,731
County : 22-CLAY					
22-2019-001	ACSP	Pasture Renovation	4	ACRE	\$1,200
		Heavy Use Area Protection	15	EACH	\$450
		Livestock Exclusion Fencing	70	LinFT	\$170
		Watering Tanks (Troughs)	1	EACH	\$1,255
22-2019-002	ACSP	Livestock Exclusion Fencing	850	LinFT	\$2,042
22-2019-003	ACSP	Heavy Use Area Protection	90	EACH	\$425
		Livestock Exclusion Fencing	75	LinFT	\$182
		Watering Tanks (Troughs)	2	EACH	\$1,125
		Stream Protection Well	1	EACH	\$5,188
22-2019-005	ACSP	Agricultural Road Repair/Stabilization	400	LinFT	\$4,796
22-2019-006	ACSP	Rooftop Runoff Management System	2	EACH	\$1,485
		Critical Area Planting	0.5	ACRE	\$1,442
		Heavy Use Area Protection	133	EACH	\$4,493
		Stock Trails & Walkways	300	LinFT	\$3,468
22-2019-007	ACSP	Drought Pasture Renovation	15	ACRE	\$3,375
22-2019-008	ACSP	Drought Pasture Renovation	10	ACRE	\$2,250
22-2019-009	ACSP	Stream Crossing	1	UNITS	\$3,544
22-2019-010	ACSP	Agricultural Road Repair/Stabilization	195	LinFT	\$2,101
		Grassed Waterway	0.25	ACRE	\$1,624
		Rooftop Runoff Management System	1	EACH	\$1,937
		Heavy Use Area Protection	1	EACH	\$8,038
22-2019-011	ACSP	Heavy Use Area Protection	1	EACH	\$0
		Livestock Exclusion Fencing	350	LinFT	\$0
		Watering Tanks (Troughs)	1	EACH	\$0
22-2019-012	ACSP	Pasture Renovation	10	ACRE	\$3,000
22-2019-801	AgWRAP	Water Supply Well & Pump	1	EACH	\$6,590
County : 23-CLEVELAND					
23-2019-001	ACSP	Heavy Use Area Protection	5	EACH	\$0
		Livestock Exclusion Fencing	1000	LinFT	\$0
		Watering Tanks (Troughs)	5	EACH	\$0
23-2019-002	ACSP	Heavy Use Area Protection	180	EACH	\$1,395
		Livestock Exclusion Fencing	2000	LinFT	\$6,075
		Watering Tanks (Troughs)	3	EACH	\$4,339
23-2019-003	ACSP	Dry Stack	1	EACH	\$25,216
23-2019-004	ACSP	Cropland Conversion - Grass	11.6	ACRE	\$2,610
23-2019-005	AgWRAP	Water Supply Well & Pump	1	EACH	\$3,300
23-2019-006	ACSP	Heavy Use Area Protection	1	EACH	\$1,836
		Livestock Exclusion Fencing	800	LinFT	\$1,944
		Stream Protection Well	1	EACH	\$4,254
23-2019-007	ACSP	Grassed Waterway	0.2	ACRE	\$802
		Diversion	400	LinFT	\$741
23-2019-008	ACSP	Stream Crossing	1	UNITS	\$4,012
23-2019-010	ACSP	Cropland Conversion - Grass	19.61	ACRE	\$5,695

Appendix C

Contract Number	Program	Best Management Practice	Planned	Unit	Cost
23-2019-801	AgWRAP	Agricultural Water Supply/Reuse Pond	1	EACH	\$25,000
County : 24-COLUMBUS					
24-2019-001	ACSP	Cover Crops	181.98	ACRE	\$3,983
24-2019-002	ACSP	Long-Term No-till	58.47	ACRE	\$8,771
24-2019-003	ACSP	Cropland Conversion - Trees	12	ACRE	\$0
24-2019-004	ACSP	Cropland Conversion - Grass	10.35	ACRE	\$2,329
24-2019-005	ACSP	Long-Term No-till	66.6	ACRE	\$9,990
24-2019-006	ACSP	Land Smoothing	63.21	ACRE	\$11,852
24-2019-007	ACSP	Cropland Conversion - Grass	18.2	ACRE	\$4,095
24-2019-801	AgWRAP	Water Supply Well & Pump	1	EACH	\$5,000
24-2019-802	AgWRAP	Water Supply Well & Pump	1	EACH	\$5,000
County : 25-CRAVEN					
25-2019-001	ACSP	Waste Treatment Lagoon	1	EACH	\$33,470
25-2019-003	ACSP	Cropland Conversion - Trees	24.8	ACRE	\$5,022
25-2019-300	ACSP	Emergency Access Restoration	3	EACH	\$2,195
25-2019-301	ACSP	Emergency Access Restoration	1	EACH	\$3,824
25-2019-302	ACSP	Disaster Winter Forage Crop Incentive	115.51	ACRE	\$2,310
		Disaster Pasture Renovation	7.22	ACRE	\$2,166
25-2019-303	ACSP	Disaster Lagoon Management Incentive	800000	GALLONS	\$20,000
25-2019-304	ACSP	Disaster Pasture Renovation	118.74	ACRE	\$1,348
25-2019-305	ACSP	Emergency Access Restoration	1	EACH	\$1,768
25-2019-306	ACSP	Emergency Access Restoration	1	EACH	\$696
25-2019-307	ACSP	Emergency Access Restoration	1	EACH	\$1,511
25-2019-308	ACSP	Disaster Pasture Renovation	4.38	ACRE	\$986
25-2019-309	ACSP	Emergency Access Restoration	1	EACH	\$963
County : 26-CUMBERLAND					
26-2019-001	ACSP	Cover Crops	121.9	ACRE	\$4,876
26-2019-002	ACSP	Rooftop Runoff Management System	2	EACH	\$2,093
		Livestock Mortality Management System - Mortality Incinerator	1	EACH	\$8,695
26-2019-003	ACSP	Abandoned Well Closure	1	EACH	\$1,800
26-2019-004	ACSP	Pasture Renovation	15.5	ACRE	\$5,580
26-2019-005	ACSP	Rooftop Runoff Management System	2	EACH	\$1,834
		Cover Crops	125	ACRE	\$5,000
26-2019-006	ACSP	Cropland Conversion - Trees	7.5	ACRE	\$836
26-2019-007	ACSP	Cropland Conversion - Trees	55.5	ACRE	\$4,773
26-2019-008	ACSP	Cropland Conversion - Grass	0.68	ACRE	\$153
26-2019-201	ACSP	Non-Field Farm Road Repair	1	EACH	\$953
26-2019-202	ACSP	Non-Field Farm Road Repair	1	EACH	\$6,104
26-2019-203	ACSP	Non-Field Farm Road Repair	1	EACH	\$6,241
26-2019-204	ACSP	Non-Field Farm Road Repair	1	EACH	\$1,952
26-2019-205	ACSP	Non-Field Farm Road Repair	1	EACH	\$837
26-2019-206	ACSP	Non-Field Farm Road Repair	1	EACH	\$5,208
26-2019-207	ACSP	Non-Field Farm Road Repair	1	EACH	\$740
26-2019-301	ACSP	Non-Field Farm Road Repair	1	EACH	\$1,370
26-2019-302	ACSP	Non-Field Farm Road Repair	1	EACH	\$750
26-2019-303	ACSP	Non-Field Farm Road Repair	1	EACH	\$750
26-2019-304	ACSP	Non-Field Farm Road Repair	1	EACH	\$1,309
26-2019-305	ACSP	Non-Field Farm Road Repair	1	EACH	\$750

Appendix C

Contract Number	Program	Best Management Practice	Planned	Unit	Cost
26-2019-306	ACSP	Emergency Access Restoration	1	EACH	\$1,861
26-2019-307	ACSP	Emergency Access Restoration	1	EACH	\$694
26-2019-308	ACSP	Non-Field Farm Road Repair	1	EACH	\$750
26-2019-309	ACSP	Non-Field Farm Road Repair	1	EACH	\$6,321
26-2019-401	ACSP	Disaster Winter Forage Crop Incentive	21	ACRE	\$535
26-2019-402	ACSP	Disaster Winter Forage Crop Incentive	25.1	ACRE	\$502
26-2019-403	ACSP	Disaster Winter Forage Crop Incentive	47.1	ACRE	\$942
26-2019-404	ACSP	Disaster Winter Forage Crop Incentive	108.95	ACRE	\$2,900
26-2019-405	ACSP	Disaster Winter Forage Crop Incentive	40.1	ACRE	\$802
26-2019-406	ACSP	Disaster Winter Forage Crop Incentive	8.4	ACRE	\$96
26-2019-407	ACSP	Disaster Winter Forage Crop Incentive	68	ACRE	\$1,360
26-2019-408	ACSP	Disaster Winter Forage Crop Incentive	30	ACRE	\$600
26-2019-409	ACSP	Disaster Winter Forage Crop Incentive	21.9	ACRE	\$438
26-2019-501	ACSP	Disaster Pasture Renovation	7.7	ACRE	\$2,079
26-2019-502	ACSP	Disaster Pasture Renovation	32	ACRE	\$7,200
26-2019-503	ACSP	Disaster Pasture Renovation	5.5	ACRE	\$698
26-2019-504	ACSP	Disaster Pasture Renovation	41	ACRE	\$9,225
26-2019-505	ACSP	Disaster Pasture Renovation	10.3	ACRE	\$2,318
26-2019-801	AgWRAP	Water Supply Well & Pump	1	EACH	\$6,763
26-2019-802	AgWRAP	Water Supply Well & Pump	1	EACH	\$7,515
County : 27-CURRITUCK					
27-2019-002	ACSP	Land Smoothing	208.15	ACRE	\$31,223
County : 28-DARE					
28-2019-501	CCAP	Permeable pavement	2800	SqFt	\$12,999
28-2019-502	CCAP	Riparian buffer	1,500	SqFt	\$6,998
County : 29-DAVIDSON					
29-2019-001	ACSP	Cropland Conversion - Grass	8	ACRE	\$1,800
29-2019-002	ACSP	Cover Crops	85.7	ACRE	\$3,428
29-2019-003	ACSP	Cover Crops	0	ACRE	\$4,000
29-2019-004	ACSP	Cover Crops	8.1	ACRE	\$324
29-2019-005	ACSP	Cover Crops	73.58	ACRE	\$2,955
29-2019-006	ACSP	Heavy Use Area Protection	1	EACH	\$10,370
29-2019-007	ACSP	Heavy Use Area Protection	1	EACH	\$3,270
29-2019-008	ACSP	Cropland Conversion - Grass	9.8	ACRE	\$2,205
29-2019-009	ACSP	Heavy Use Area Protection	1	EACH	\$8,061
29-2019-801	AgWRAP	Water Supply Well & Pump	1	EACH	\$9,993
29-2019-802	AgWRAP	Agricultural Water Supply/Reuse Pond	1	EACH	\$25,000
29-2019-803	AgWRAP	Agriculture Pond Repair/Retrofit	1	EACH	\$25,000
County : 30-DAVIE					
30-2019-001	ACSP	Livestock Exclusion Fencing	2500	LinFT	\$3,359
		Watering Tanks (Troughs)	1	EACH	\$7,932
		Stream Protection Well	1	EACH	\$4,818
30-2019-002	ACSP	Livestock Exclusion Fencing	2270	LinFT	\$3,746
		Watering Tanks (Troughs)	4	EACH	\$9,719
		Stream Protection Well	1	EACH	\$5,676
30-2019-003	ACSP	Waste Application Systems - Mobile Application System	1	EACH	\$10,500
30-2019-004	ACSP	Waste Application Systems - Mobile Application System	1	EACH	\$10,500

Appendix C

Contract Number	Program	Best Management Practice	Planned	Unit	Cost
30-2019-005	ACSP	Cover Crops	10	ACRE	\$400
30-2019-006	ACSP	Cover Crops	30	ACRE	\$1,200
30-2019-801	AgWRAP	Water Supply Well & Pump	1	EACH	\$7,438
County : 31-DUPLIN					
31-2019-001	ACSP	Cover Crops	247.5	ACRE	\$9,898
31-2019-002	ACSP	Cover Crops	250	ACRE	\$10,000
31-2019-003	ACSP	Cropland Conversion - Grass	15	ACRE	\$4,050
31-2019-004	ACSP	Field Border	0.44	ACRE	\$2,947
		Grassed Waterway	0.34	ACRE	\$1,582
31-2019-005	ACSP	Critical Area Planting	0.2	ACRE	\$4,826
31-2019-006	ACSP	Grassed Waterway	1.35	ACRE	\$7,114
31-2019-007	ACSP	Field Border	0.3	ACRE	\$675
		Grassed Waterway	2.88	ACRE	\$8,587
		Water Control Structure - In-Line Structures	5	EACH	\$1,683
31-2019-008	ACSP	Cover Crops	134.6	ACRE	\$10,000
31-2019-009	ACSP	Cover Crops	198.1	ACRE	\$7,924
31-2019-010	ACSP	Grade Stabilization Structure	0	EACH	\$3,791
		Grassed Waterway	0	ACRE	\$740
31-2019-011	ACSP	Cropland Conversion - Grass	12.05	ACRE	\$2,711
31-2019-012	ACSP	Cropland Conversion - Grass	31.33	ACRE	\$8,459
31-2019-501	ACSP	Disaster Winter Forage Crop Incentive	13.76	ACRE	\$275
31-2019-502	ACSP	Disaster Pasture Renovation	31.49	ACRE	\$7,085
31-2019-503	ACSP	Disaster Winter Forage Crop Incentive	300.25	ACRE	\$6,005
31-2019-504	ACSP	Disaster Winter Forage Crop Incentive	421.85	ACRE	\$8,437
31-2019-505	ACSP	Disaster Winter Forage Crop Incentive	91.75	ACRE	\$1,835
31-2019-506	ACSP	Disaster Winter Forage Crop Incentive	191.69	ACRE	\$3,834
31-2019-507	ACSP	Disaster Winter Forage Crop Incentive	8.22	ACRE	\$164
31-2019-509	ACSP	Disaster Winter Forage Crop Incentive	25.41	ACRE	\$508
31-2019-510	ACSP	Disaster Winter Forage Crop Incentive	94.62	ACRE	\$1,893
31-2019-511	ACSP	Disaster Pasture Renovation	139.79	ACRE	\$31,454
31-2019-512	ACSP	Disaster Pasture Renovation	7	ACRE	\$1,575
31-2019-513	ACSP	Disaster Pasture Renovation	44.33	ACRE	\$9,974
31-2019-514	ACSP	Disaster Pasture Renovation	66.66	ACRE	\$15,000
31-2019-515	ACSP	Disaster Winter Forage Crop Incentive	792.7	ACRE	\$15,854
31-2019-516	ACSP	Disaster Pasture Renovation	67.4	ACRE	\$15,166
31-2019-517	ACSP	Disaster Winter Forage Crop Incentive	12	ACRE	\$240
31-2019-519	ACSP	Disaster Pasture Renovation	18.4	ACRE	\$4,140
31-2019-520	ACSP	Disaster Winter Forage Crop Incentive	22.3	ACRE	\$446
31-2019-521	ACSP	Disaster Pasture Renovation	17.73	ACRE	\$3,989
31-2019-522	ACSP	Disaster Pasture Renovation	37	ACRE	\$8,325
31-2019-523	ACSP	Disaster Pasture Renovation	35.86	ACRE	\$8,070
31-2019-525	ACSP	Disaster Winter Forage Crop Incentive	52.95	ACRE	\$1,060
31-2019-526	ACSP	Disaster Winter Forage Crop Incentive	35.88	ACRE	\$718
31-2019-527	ACSP	Disaster Winter Forage Crop Incentive	122.96	ACRE	\$2,460
31-2019-529	ACSP	Disaster Winter Forage Crop Incentive	43.82	ACRE	\$877
31-2019-530	ACSP	Disaster Pasture Renovation	21.96	ACRE	\$4,942
31-2019-531	ACSP	Disaster Winter Forage Crop Incentive	30.48	ACRE	\$610
31-2019-533	ACSP	Disaster Pasture Renovation	19.96	ACRE	\$4,491
31-2019-535	ACSP	Disaster Pasture Renovation	16.89	ACRE	\$4,560
31-2019-536	ACSP	Disaster Pasture Renovation	33.77	ACRE	\$7,598

Appendix C

Contract Number	Program	Best Management Practice	Planned	Unit	Cost
31-2019-537	ACSP	Disaster Pasture Renovation	10	ACRE	\$2,250
31-2019-538	ACSP	Disaster Pasture Renovation	7.85	ACRE	\$1,766
31-2019-540	ACSP	Disaster Pasture Renovation	4	ACRE	\$900
31-2019-541	ACSP	Disaster Pasture Renovation	9.51	ACRE	\$2,140
31-2019-542	ACSP	Disaster Pasture Renovation	6.47	ACRE	\$1,456
31-2019-543	ACSP	Disaster Winter Forage Crop Incentive	14.95	ACRE	\$299
31-2019-544	ACSP	Disaster Pasture Renovation	9.04	ACRE	\$2,034
31-2019-545	ACSP	Disaster Winter Forage Crop Incentive	22.99	ACRE	\$460
31-2019-546	ACSP	Disaster Pasture Renovation	105.08	ACRE	\$23,645
31-2019-547	ACSP	Disaster Pasture Renovation	90.5	ACRE	\$20,374
31-2019-548	ACSP	Disaster Winter Forage Crop Incentive	70.09	ACRE	\$1,402
31-2019-549	ACSP	Disaster Pasture Renovation	8	ACRE	\$1,800
31-2019-550	ACSP	Disaster Pasture Renovation	40	ACRE	\$9,000
31-2019-553	ACSP	Disaster Pasture Renovation	42.98	ACRE	\$9,670
31-2019-554	ACSP	Disaster Pasture Renovation	54.07	ACRE	\$12,166
31-2019-555	ACSP	Disaster Pasture Renovation	40.9	ACRE	\$9,203
31-2019-556	ACSP	Disaster Pasture Renovation	12.37	ACRE	\$2,783
31-2019-557	ACSP	Disaster Winter Forage Crop Incentive	39.21	ACRE	\$784
31-2019-558	ACSP	Disaster Pasture Renovation	57.03	ACRE	\$12,832
31-2019-559	ACSP	Disaster Pasture Renovation	58	ACRE	\$13,050
31-2019-560	ACSP	Disaster Pasture Renovation	6.27	ACRE	\$1,411
31-2019-561	ACSP	Disaster Pasture Renovation	0	ACRE	\$275
31-2019-563	ACSP	Disaster Pasture Renovation	29.01	ACRE	\$5,852
31-2019-564	ACSP	Disaster Pasture Renovation	8	ACRE	\$1,800
31-2019-567	ACSP	Disaster Winter Forage Crop Incentive	89	ACRE	\$887
31-2019-570	ACSP	Disaster Pasture Renovation	34.53	ACRE	\$7,769
31-2019-571	ACSP	Disaster Winter Forage Crop Incentive	73.62	ACRE	\$1,473
31-2019-572	ACSP	Disaster Pasture Renovation	8	ACRE	\$20,336
31-2019-601	ACSP	Emergency Access Restoration	1	EACH	\$1,509
31-2019-602	ACSP	Emergency Access Restoration	2	EACH	\$4,197
31-2019-603	ACSP	Emergency Access Restoration	1	EACH	\$1,129
31-2019-605	ACSP	Emergency Access Restoration	6	EACH	\$7,538
31-2019-607	ACSP	Emergency Access Restoration	6	EACH	\$4,060
31-2019-608	ACSP	Non-Field Farm Road Repair	0	EACH	\$7,500
31-2019-609	ACSP	Emergency Access Restoration	1	EACH	\$1,026
31-2019-610	ACSP	Emergency Access Restoration	3	EACH	\$4,906
31-2019-611	ACSP	Emergency Access Restoration	1	EACH	\$3,034
31-2019-613	ACSP	Non-Field Farm Road Repair	1	EACH	\$9,787
		Emergency Access Restoration	2	EACH	\$3,108
31-2019-619	ACSP	Emergency Access Restoration	1	EACH	\$2,361
31-2019-621	ACSP	Emergency Access Restoration	1	EACH	\$3,542
31-2019-626	ACSP	Emergency Access Restoration	1	EACH	\$835
31-2019-627	ACSP	Emergency Access Restoration	2	EACH	\$3,542
31-2019-629	ACSP	Emergency Access Restoration	1	EACH	\$3,499
31-2019-632	ACSP	Emergency Access Restoration	2	EACH	\$1,941
31-2019-633	ACSP	Emergency Access Restoration	2	EACH	\$2,314
31-2019-635	ACSP	Emergency Access Restoration	15	EACH	\$7,032
31-2019-641	ACSP	Emergency Access Restoration	1	EACH	\$2,826
31-2019-642	ACSP	Emergency Access Restoration	2	EACH	\$12,303
31-2019-643	ACSP	Emergency Access Restoration	1	EACH	\$4,623
31-2019-644	ACSP	Emergency Access Restoration	5	EACH	\$1,047
31-2019-645	ACSP	Emergency Access Restoration	1	EACH	\$1,030

Appendix C

Contract Number	Program	Best Management Practice	Planned	Unit	Cost
31-2019-646	ACSP	Emergency Access Restoration		1 EACH	\$1,850
31-2019-647	ACSP	Non-Field Farm Road Repair		1 EACH	\$0
		Emergency Access Restoration		1 EACH	\$5,390
31-2019-654	ACSP	Emergency Access Restoration		1 EACH	\$8,066
31-2019-656	ACSP	Emergency Access Restoration		1 EACH	\$1,008
31-2019-657	ACSP	Non-Field Farm Road Repair		1 EACH	\$386
		Emergency Access Restoration		1 EACH	\$688
31-2019-660	ACSP	Emergency Access Restoration		1 EACH	\$904
31-2019-661	ACSP	Emergency Access Restoration		1 EACH	\$2,858
31-2019-662	ACSP	Emergency Access Restoration		1 EACH	\$3,335
31-2019-663	ACSP	Non-Field Farm Road Repair		1 EACH	\$0
31-2019-664	ACSP	Non-Field Farm Road Repair		1 EACH	\$0
31-2019-665	ACSP	Emergency Access Restoration		1 EACH	\$2,030
31-2019-666	ACSP	Emergency Access Restoration		1 EACH	\$2,395
31-2019-667	ACSP	Emergency Access Restoration		1 EACH	\$1,497
31-2019-669	ACSP	Emergency Access Restoration		3 EACH	\$3,946
31-2019-670	ACSP	Emergency Access Restoration		1 EACH	\$2,005
31-2019-671	ACSP	Emergency Access Restoration		1 EACH	\$1,843
31-2019-672	ACSP	Emergency Access Restoration		1 EACH	\$3,952
31-2019-673	ACSP	Emergency Access Restoration		2 EACH	\$5,609
31-2019-676	ACSP	Emergency Access Restoration		1 EACH	\$1,836
31-2019-677	ACSP	Emergency Access Restoration		2 EACH	\$4,832
31-2019-678	ACSP	Emergency Access Restoration		1 EACH	\$903
31-2019-679	ACSP	Emergency Access Restoration		1 EACH	\$1,152
31-2019-681	ACSP	Non-Field Farm Road Repair		0 EACH	\$0
31-2019-684	ACSP	Emergency Access Restoration		1 EACH	\$4,158
31-2019-688	ACSP	Emergency Access Restoration		3 EACH	\$14,043
31-2019-693	ACSP	Emergency Access Restoration		2 EACH	\$1,118
31-2019-695	ACSP	Emergency Access Restoration		1 EACH	\$7,231
31-2019-697	ACSP	Emergency Access Restoration		8 EACH	\$11,629
31-2019-701	ACSP	Disaster Lagoon Management Incentive	1830000	GALLONS	\$18,300
31-2019-702	ACSP	Disaster Lagoon Management Incentive	1800	GALLONS	\$1,800
31-2019-703	ACSP	Disaster Lagoon Management Incentive	864000	GALLONS	\$8,640
31-2019-704	ACSP	Disaster Lagoon Management Incentive	806400	GALLONS	\$8,064
31-2019-709	ACSP	Disaster Lagoon Management Incentive	480000	GALLONS	\$2,400
31-2019-710	ACSP	Disaster Lagoon Management Incentive	300000	GALLONS	\$3,000
31-2019-713	ACSP	Disaster Lagoon Management Incentive	643200	GALLONS	\$6,432
31-2019-714	ACSP	Disaster Lagoon Management Incentive	607500	GALLONS	\$3,038
31-2019-716	ACSP	Disaster Lagoon Management Incentive	4175112	GALLONS	\$20,875
31-2019-723	ACSP	Disaster Lagoon Management Incentive	22850	GALLONS	\$22,850
31-2019-724	ACSP	Disaster Lagoon Management Incentive	1204038	GALLONS	\$6,020
31-2019-726	ACSP	Disaster Lagoon Management Incentive	998382	GALLONS	\$4,992
31-2019-727	ACSP	Disaster Lagoon Management Incentive	781000	GALLONS	\$3,905

Appendix C

Contract Number	Program	Best Management Practice	Planned	Unit	Cost
31-2019-728	ACSP	Disaster Lagoon Management Incentive	238500	GALLONS	\$2,385
31-2019-729	ACSP	Disaster Lagoon Management Incentive	1272600	GALLONS	\$12,726
31-2019-730	ACSP	Disaster Lagoon Management Incentive	576000	GALLONS	\$5,760
31-2019-736	ACSP	Disaster Lagoon Management Incentive	1315600	GALLONS	\$13,156
31-2019-738	ACSP	Disaster Lagoon Management Incentive	4298700	GALLONS	\$21,493
31-2019-742	ACSP	Disaster Lagoon Management Incentive	982800	GALLONS	\$9,828
31-2019-743	ACSP	Disaster Lagoon Management Incentive	998400	GALLONS	\$9,984
31-2019-752	ACSP	Disaster Lagoon Management Incentive	804000	GALLONS	\$8,040
31-2019-755	ACSP	Disaster Lagoon Management Incentive	2207600	GALLONS	\$11,038
31-2019-756	ACSP	Disaster Lagoon Management Incentive	1014000	GALLONS	\$10,140
31-2019-757	ACSP	Disaster Lagoon Management Incentive	600000	GALLONS	\$6,000
31-2019-758	ACSP	Disaster Lagoon Management Incentive	1120500	GALLONS	\$5,603
31-2019-759	ACSP	Disaster Lagoon Management Incentive	483600	GALLONS	\$4,836
31-2019-760	ACSP	Disaster Lagoon Management Incentive	720000	GALLONS	\$7,200
31-2019-761	ACSP	Disaster Lagoon Management Incentive	403846	GALLONS	\$2,020
31-2019-762	ACSP	Disaster Lagoon Management Incentive	1925000	GALLONS	\$19,250
31-2019-763	ACSP	Disaster Lagoon Management Incentive	352000	GALLONS	\$3,520
31-2019-764	ACSP	Disaster Lagoon Management Incentive	12000	GALLONS	\$12,000
31-2019-765	ACSP	Disaster Lagoon Management Incentive	635000	GALLONS	\$6,350
31-2019-766	ACSP	Disaster Lagoon Management Incentive	14500	GALLONS	\$14,500
31-2019-767	ACSP	Disaster Lagoon Management Incentive	20250	GALLONS	\$20,250
31-2019-769	ACSP	Disaster Lagoon Management Incentive	420000	GALLONS	\$4,200
31-2019-770	ACSP	Disaster Lagoon Management Incentive	415000	GALLONS	\$4,150
31-2019-771	ACSP	Disaster Lagoon Management Incentive	390000	GALLONS	\$3,900
31-2019-772	ACSP	Disaster Lagoon Management Incentive	575000	GALLONS	\$5,750
31-2019-773	ACSP	Disaster Lagoon Management Incentive	635000	GALLONS	\$6,350
31-2019-774	ACSP	Disaster Lagoon Management Incentive	970000	GALLONS	\$9,700
31-2019-775	ACSP	Disaster Lagoon Management Incentive	945000	GALLONS	\$9,450
31-2019-776	ACSP	Disaster Lagoon Management Incentive	260000	GALLONS	\$2,600
31-2019-777	ACSP	Disaster Lagoon Management Incentive	470000	GALLONS	\$4,700

Appendix C

Contract Number	Program	Best Management Practice	Planned	Unit	Cost
31-2019-778	ACSP	Disaster Lagoon Management Incentive	3121500	GALLONS	\$15,608
31-2019-779	ACSP	Disaster Lagoon Management Incentive	2290000	GALLONS	\$22,900
31-2019-780	ACSP	Disaster Lagoon Management Incentive	745000	GALLONS	\$7,450
31-2019-781	ACSP	Disaster Lagoon Management Incentive	425000	GALLONS	\$4,250
31-2019-782	ACSP	Disaster Lagoon Management Incentive	6940	GALLONS	\$694
31-2019-783	ACSP	Disaster Lagoon Management Incentive	6950	GALLONS	\$695
31-2019-800	AgWRAP	Water Supply Well & Pump	1	EACH	\$2,415
31-2019-801	AgWRAP	Water Supply Well & Pump	1	EACH	\$5,000
31-2019-802	AgWRAP	Water Supply Well & Pump	1	EACH	\$5,000
31-2019-803	AgWRAP	Water Supply Well & Pump	1	EACH	\$5,000
31-2019-804	AgWRAP	Water Supply Well & Pump	1	EACH	\$5,000
31-2019-805	AgWRAP	Water Supply Well & Pump	1	EACH	\$5,000
31-2019-806	AgWRAP	Water Supply Well & Pump	1	EACH	\$4,473
31-2019-909	ACSP	Emergency Access Restoration	2	EACH	\$3,683
County : 32-DURHAM					
32-2019-001	ACSP	Rooftop Runoff Management System	1	EACH	\$1,334
32-2019-002	ACSP	Non-Field Farm Road Repair	1	EACH	\$4,204
32-2019-003	ACSP	Non-Field Farm Road Repair	1	EACH	\$5,988
32-2019-004	ACSP	Non-Field Farm Road Repair	1	EACH	\$7,683
32-2019-005	ACSP	Waste Application Systems - Mobile Application System	1	EACH	\$5,571
32-2019-006	ACSP	Manure Composting Facility	1	EACH	\$8,035
32-2019-007	ACSP	Livestock Exclusion Fencing	1300	LinFT	\$4,942
32-2019-008	ACSP	Field Border	0.38	ACRE	\$927
		Grassed Waterway	2.04	ACRE	\$5,586
		Diversion	1150	LinFT	\$1,269
32-2019-009	ACSP	Grassed Waterway	2.12	ACRE	\$5,805
		Diversion	515	LinFT	\$568
32-2019-010	ACSP	Grassed Waterway	0.48	ACRE	\$1,602
		Stream Protection Well	1	EACH	\$10,138
32-2019-802	AgWRAP	Water Supply Well & Pump	1	EACH	\$7,500
County : 33-EDGECOMBE					
33-2019-001	ACSP	Precision Nutrient Management	1000	ACRE	\$14,999
33-2019-002	ACSP	Grassed Waterway	0.2	ACRE	\$616
		Critical Area Planting	0.3	ACRE	\$834
33-2019-003	ACSP	Cropland Conversion - Grass	10	ACRE	\$2,250
33-2019-004	ACSP	Cropland Conversion - Grass	18	ACRE	\$4,050
County : 34-FORSYTH					
34-2019-001	ACSP	Stream Restoration	250	LinFT	\$22,000
34-2019-002	ACSP	Cover Crops	48.91	ACRE	\$1,956
34-2019-003	ACSP	Cropland Conversion - Grass	16.24	ACRE	\$0
34-2019-004	ACSP	Livestock Exclusion Fencing	850	LinFT	\$2,004
34-2019-005	ACSP	Pasture Renovation	37.7	ACRE	\$13,544
34-2019-006	ACSP	Heavy Use Area Protection	1	EACH	\$2,766
34-2019-007	ACSP	Livestock Exclusion Fencing	992	LinFT	\$1,948
34-2019-801	AgWRAP	Water Supply Well & Pump	1	EACH	\$0

Appendix C

Contract Number	Program	Best Management Practice	Planned	Unit	Cost
34-2019-802	AgWRAP	Water Supply Well & Pump		1 EACH	\$5,519
34-2019-803	AgWRAP	Water Supply Well & Pump		1 EACH	\$21,914
34-2019-804	AgWRAP	Agriculture Pond Repair/Retrofit		1 EACH	\$25,000
County : 35-FRANKLIN					
35-2019-001	AgWRAP	Agricultural Pond Sediment Removal		1 EACH	\$5,000
35-2019-002	ACSP	Cover Crops		0 ACRE	\$0
35-2019-003	ACSP	Sod-Based Rotation - 4 Year SBR (29 months)	192.3	ACRE	\$17,420
35-2019-004	ACSP	Cover Crops		28 ACRE	\$1,112
35-2019-005	ACSP	Cover Crops	100.85	ACRE	\$4,032
35-2019-006	ACSP	Cover Crops	110.97	ACRE	\$4,436
35-2019-007	ACSP	Livestock Exclusion Fencing	5100	LinFT	\$4,590
		Watering Tanks (Troughs)		5 EACH	\$12,436
		Stream Protection Well		1 EACH	\$2,000
35-2019-008	ACSP	Sod-Based Rotation - 5 Year SBR (41 months)	28.4	ACRE	\$4,970
35-2019-009	ACSP	Sod-Based Rotation - 5 Year SBR (41 months)		8 ACRE	\$1,400
35-2019-010	ACSP	Sod-Based Rotation - 3 Year SBR (17 months)	10.6	ACRE	\$795
35-2019-011	ACSP	Sod-Based Rotation - 4 Year SBR (29 months)	23.06	ACRE	\$2,998
35-2019-012	ACSP	Cropland Conversion - Grass	25.9	ACRE	\$5,846
35-2019-013	ACSP	Cropland Conversion - Grass	1.63	ACRE	\$367
35-2019-800	AgWRAP	Agriculture Pond Repair/Retrofit		1 EACH	\$25,000
County : 36-GASTON					
36-2019-283	ACSP	Heavy Use Area Protection		1 EACH	\$2,945
36-2019-288	ACSP	Heavy Use Area Protection		1 EACH	\$1,906
		Livestock Exclusion Fencing	2700	LinFT	\$7,873
		Watering Tanks (Troughs)		1 EACH	\$2,693
36-2019-289	ACSP	Heavy Use Area Protection		1 EACH	\$1,906
		Livestock Exclusion Fencing	400	LinFT	\$1,166
		Watering Tanks (Troughs)		1 EACH	\$1,255
		Stream Protection Well		1 EACH	\$7,411
36-2019-290	ACSP	Agricultural Water Collection System	1.85	EACH	\$5,075
36-2019-291	ACSP	Heavy Use Area Protection		1 EACH	\$1,907
		Livestock Exclusion Fencing	4790	LinFT	\$13,968
		Watering Tanks (Troughs)		1 EACH	\$4,919
36-2019-811	AgWRAP	Water Supply Well & Pump		1 EACH	\$7,500
36-2019-812	AgWRAP	Water Supply Well & Pump		1 EACH	\$11,053
County : 37-GATES					
37-2019-001	ACSP	Precision Agrichemical Application		1 EACH	\$6,000
37-2019-002	ACSP	Grade Stabilization Structure		1 EACH	\$6,466
		Grassed Waterway	0.28	ACRE	\$1,568
37-2019-004	ACSP	Cover Crops	60.18	ACRE	\$2,408
		Sod-Based Rotation - 3 Year SBR (17 months)	17.68	ACRE	\$1,326
County : 38-GRAHAM					
38-2019-001	ACSP	Agricultural Road Repair/Stabilization	174	LinFT	\$2,346
38-2019-002	ACSP	Agricultural Road Repair/Stabilization	245	LinFT	\$2,296
		Heavy Use Area Protection		1 EACH	\$1,895

Appendix C

Contract Number	Program	Best Management Practice	Planned	Unit	Cost
38-2019-003	ACSP	Agricultural Road Repair/Stabilization	533	LinFT	\$5,129
38-2019-004	ACSP	Livestock Exclusion Fencing	750	LinFT	\$1,266
		Watering Tanks (Troughs)	2	EACH	\$3,910
38-2019-005	ACSP	Agricultural Road Repair/Stabilization	712	LinFT	\$3,062
38-2019-801	AgWRAP	Ag Water Collection System	1		\$909
38-2019-804	AgWRAP	Water Supply Well & Pump	1	EACH	\$2,272
38-2019-805	AgWRAP	District BMP- Micro-Irrigation System for Greenhouse/High Tunnel	1		\$1,250
38-2019-806	AgWRAP	District BMP- Micro-Irrigation System for Greenhouse/High Tunnel	1		\$1,250
County : 39-GRANVILLE					
39-2019-001	ACSP	Cropland Conversion - Trees	5.6	ACRE	\$416
39-2019-002	ACSP	Agriculture Pond Sediment Removal	1	EACH	\$3,000
39-2019-005	ACSP	Agriculture Pond Sediment Removal	1	EACH	\$3,000
39-2019-006	ACSP	Agriculture Pond Sediment Removal	1	EACH	\$3,000
39-2019-007	ACSP	Agriculture Pond Sediment Removal	1	EACH	\$3,000
39-2019-009	ACSP	Agriculture Pond Sediment Removal	1	EACH	\$3,000
39-2019-012	ACSP	Agriculture Pond Sediment Removal	1	EACH	\$3,000
39-2019-014	ACSP	Agriculture Pond Sediment Removal	1	EACH	\$5,000
39-2019-015	ACSP	Agriculture Pond Sediment Removal	1	EACH	\$3,000
39-2019-016	ACSP	Agriculture Pond Sediment Removal	1	EACH	\$3,000
39-2019-017	ACSP	Agriculture Pond Sediment Removal	1	EACH	\$3,000
39-2019-018	ACSP	Cropland Conversion - Trees	11.1	ACRE	\$1,196
39-2019-021	ACSP	Cropland Conversion - Trees	23.4	ACRE	\$2,194
39-2019-022	ACSP	Cropland Conversion - Trees	3.5	ACRE	\$234
County : 40-GREENE					
40-2019-001	ACSP	Field Border	0.8	ACRE	\$1,740
40-2019-002	ACSP	Grassed Waterway	1.8	ACRE	\$4,996
40-2019-003	ACSP	Three Year Conservation Tillage for Grain and Cotton	81.8	ACRE	\$4,908
40-2019-004	ACSP	Cover Crops	264.2	ACRE	\$10,520
40-2019-005	ACSP	Cover Crops	25.2	ACRE	\$1,008
40-2019-006	ACSP	Cover Crops	31.7	ACRE	\$1,268
40-2019-007	ACSP	Grassed Waterway	1	ACRE	\$5,370
		Diversion	2200	LinFT	\$7,349
40-2019-008	ACSP	Grassed Waterway	0.5	ACRE	\$1,388
40-2019-101	ACSP	Disaster Winter Forage Crop Incentive	84.4	ACRE	\$1,528
40-2019-102	ACSP	Disaster Lagoon Management Incentive	1140468	GALLONS	\$11,405
County : 41-GUILFORD					
41-2019-001	ACSP	Heavy Use Area Protection	2	EACH	\$940
		Livestock Exclusion Fencing	1300	LinFT	\$2,555
		Watering Tanks (Troughs)	2	EACH	\$2,958
		Stream Protection Well	1	EACH	\$6,103
41-2019-002	ACSP	Livestock Exclusion Fencing	3900	LinFT	\$6,435
		Watering Tanks (Troughs)	4	EACH	\$7,099
		Stream Protection Well	1	EACH	\$6,102
41-2019-003	ACSP	Waste Application Systems - Underground Main and Hydrant System	1	EACH	\$21,047
41-2019-004	ACSP	Cover Crops	68	ACRE	\$2,720

Appendix C

Contract Number	Program	Best Management Practice	Planned	Unit	Cost
41-2019-005	ACSP	Field Border	1	ACRE	\$2,352
		Critical Area Planting	0.6	ACRE	\$1,531
41-2019-006	ACSP	Abandoned Well Closure	3	EACH	\$4,414
41-2019-007	ACSP	Non-Field Farm Road Repair	1	EACH	\$7,493
41-2019-008	ACSP	Non-Field Farm Road Repair	1	EACH	\$7,500
41-2019-009	ACSP	Non-Field Farm Road Repair	1	EACH	\$7,507
41-2019-012	ACSP	Disaster Lagoon Management Incentive	1000000	GALLONS	\$10,000
41-2019-013	ACSP	Disaster Lagoon Management Incentive	800000	GALLONS	\$8,000
41-2019-014	ACSP	Disaster Lagoon Management Incentive	600000	GALLONS	\$4,032
41-2019-015	ACSP	Disaster Emergency Agricultural Pond Repair/Retrofit	1	JOB	\$29,999
41-2019-016	ACSP	Disaster Lagoon Management Incentive	2200000	GALLONS	\$22,000
41-2019-801	AgWRAP	Water Supply Well & Pump	1	EACH	\$5,278
41-2019-802	AgWRAP	Water Supply Well & Pump	1	EACH	\$5,279
41-2019-803	AgWRAP	Agricultural Water Supply/Reuse Pond	1	EACH	\$35,001
41-2019-804	AgWRAP	Conservation Irrigation Conversion	29.6	ACRE	\$24,987
41-2019-805	AgWRAP	Agricultural Pond Sediment Removal	2	EACH	\$10,001
41-2019-806	ACSP	Agricultural Road Repair/Stabilization	1	LinFT	\$0
41-2019-807	AgWRAP	Water Supply Well & Pump	1	EACH	\$0
41-2019-808	AgWRAP	Agriculture Pond Repair/Retrofit	1	EACH	\$25,001
41-2019-809	AgWRAP	Water Supply Well & Pump	1	EACH	\$4,649
County : 42-HALIFAX					
42-2019-001	ACSP	Cropland Conversion - Trees	12	ACRE	\$1,845
42-2019-004	ACSP	Grassed Waterway	1.1	ACRE	\$1,052
42-2019-005	ACSP	Grassed Waterway	1.5	ACRE	\$6,646
42-2019-006	ACSP	Grassed Waterway	0.8	ACRE	\$3,060
		Terrace	4700	LinFT	\$3,525
42-2019-007	ACSP	Closure - Waste Impoundments	1	EACH	\$23,000
42-2019-008	ACSP	Grassed Waterway	1.3	ACRE	\$4,813
42-2019-601	ACSP	Riparian Buffer	18.9	ACRE	\$0
42-2019-602	ACSP	Riparian Buffer	10.9	ACRE	\$1,896
42-2019-812	AgWRAP	Agriculture Pond Repair/Retrofit	1	EACH	\$7,706
42-2019-813	AgWRAP	Agriculture Pond Repair/Retrofit	1	EACH	\$25,000
42-2019-911	AgWRAP	Agriculture Pond Repair/Retrofit	1	EACH	\$20,000
County : 43-HARNETT					
43-2019-001	ACSP	Cropland Conversion - Grass	10	ACRE	\$2,250
43-2019-002	ACSP	Grassed Waterway	0.4	ACRE	\$1,638
43-2019-003	ACSP	Cover Crops	19	ACRE	\$760
43-2019-004	ACSP	Cropland Conversion - Grass	8.3	ACRE	\$1,869
43-2019-006	ACSP	Cropland Conversion - Grass	4.8	ACRE	\$1,080
43-2019-007	ACSP	Cropland Conversion - Trees	3.87	ACRE	\$247
43-2019-008	ACSP	Cropland Conversion - Grass	9.8	ACRE	\$2,205
43-2019-009	ACSP	Cropland Conversion - Grass	8	ACRE	\$1,800
43-2019-010	ACSP	Cropland Conversion - Grass	3.3	ACRE	\$743
43-2019-011	ACSP	Cropland Conversion - Grass	21.2	ACRE	\$4,770
43-2019-012	ACSP	Cropland Conversion - Grass	3.2	ACRE	\$720
43-2019-013	ACSP	Cropland Conversion - Grass	24	ACRE	\$5,400
43-2019-014	ACSP	Cropland Conversion - Grass	6.7	ACRE	\$1,508

Appendix C

Contract Number	Program	Best Management Practice	Planned	Unit	Cost
43-2019-015	ACSP	Cropland Conversion - Grass	1.75	ACRE	\$394
43-2019-017	ACSP	Cropland Conversion - Grass	13.9	ACRE	\$3,128
43-2019-018	ACSP	Field Border	1.7	ACRE	\$2,933
		Critical Area Planting	0.5	ACRE	\$863
43-2019-019	ACSP	Cropland Conversion - Grass	5.5	ACRE	\$1,238
43-2019-020	ACSP	Grassed Waterway	0.46	ACRE	\$2,492
43-2019-021	ACSP	Watering Tanks (Troughs)	1	EACH	\$2,160
43-2019-100	ACSP	Disaster Winter Forage Crop Incentive	77.23	ACRE	\$737
43-2019-101	ACSP	Emergency Access Restoration	1	EACH	\$1,207
43-2019-102	ACSP	Disaster Winter Forage Crop Incentive	22.46	ACRE	\$449
43-2019-103	ACSP	Disaster Winter Forage Crop Incentive	83.91	ACRE	\$1,679
43-2019-104	ACSP	Disaster Winter Forage Crop Incentive	105.08	ACRE	\$2,102
43-2019-105	ACSP	Non-Field Farm Road Repair	1	EACH	\$2,600
		Emergency Access Restoration	1	EACH	\$154
43-2019-106	ACSP	Emergency Access Restoration	1	EACH	\$546
43-2019-107	ACSP	Non-Field Farm Road Repair	1	EACH	\$10,811
43-2019-108	ACSP	Non-Field Farm Road Repair	1	EACH	\$1,848
43-2019-109	ACSP	Non-Field Farm Road Repair	1	EACH	\$246
43-2019-110	ACSP	Non-Field Farm Road Repair	1	EACH	\$100
43-2019-112	ACSP	Non-Field Farm Road Repair	1	EACH	\$633
43-2019-113	ACSP	Non-Field Farm Road Repair	1	EACH	\$2,700
43-2019-114	ACSP	Non-Field Farm Road Repair	1	EACH	\$2,755
43-2019-121	ACSP	Disaster Pasture Renovation	15	ACRE	\$3,375
43-2019-122	ACSP	Disaster Pasture Renovation	19.6	ACRE	\$4,410
43-2019-123	ACSP	Disaster Pasture Renovation	126	ACRE	\$0
43-2019-124	ACSP	Disaster Pasture Renovation	45.05	ACRE	\$10,137
43-2019-125	ACSP	Disaster Pasture Renovation	16.1	ACRE	\$2,948
County : 44-HAYWOOD					
44-2019-001	ACSP	Agricultural Road Repair/Stabilization	165	LinFT	\$3,605
		Heavy Use Area Protection	2	EACH	\$2,841
		Livestock Exclusion Fencing	1130	LinFT	\$2,726
		Livestock Feeding Area	1	EACH	\$7,290
		Stream Crossing	1	UNITS	\$1,809
		Watering Tanks (Troughs)	1	EACH	\$1,325
		Stream Protection Well	1	EACH	\$7,680
44-2019-002	ACSP	Heavy Use Area Protection	1	EACH	\$442
		Livestock Exclusion Fencing	190	LinFT	\$64
		Watering Tanks (Troughs)	1	EACH	\$1,136
		Stream Protection Well	1	EACH	\$6,718
44-2019-003	ACSP	Heavy Use Area Protection	2	EACH	\$850
		Watering Tanks (Troughs)	2	EACH	\$2,270
		Stream Protection Well	1	EACH	\$6,691
44-2019-004	ACSP	Livestock Feeding Area	1	EACH	\$4,964
County : 45-HENDERSON					
45-2019-001	ACSP	Agrichemical Handling Facility	1	EACH	\$32,036
45-2019-002	ACSP	Heavy Use Area Protection	1	EACH	\$4,737
45-2019-003	ACSP	Agrichemical Handling Facility	1	EACH	\$6,821
45-2019-004	ACSP	Heavy Use Area Protection	1	EACH	\$3,296
45-2019-005	ACSP	Agrichemical Handling Facility	1	EACH	\$0
45-2019-006	ACSP	Heavy Use Area Protection	1	EACH	\$12,485
45-2019-007	ACSP	Critical Area Planting	0.1	ACRE	\$2,930

Appendix C

Contract Number	Program	Best Management Practice	Planned	Unit	Cost
45-2019-008	ACSP	Critical Area Planting	0.34	ACRE	\$8,588
45-2019-009	ACSP	Critical Area Planting	0.5	ACRE	\$12,537
45-2019-010	ACSP	Critical Area Planting	0.52	ACRE	\$2,064
45-2019-501	CCAP	Stream restoration	225	LinFT	\$5,000
45-2019-801	AgWRAP	Water Supply Well & Pump	1	EACH	\$7,500
45-2019-802	AgWRAP	Agricultural Water Supply/Reuse Pond	1	EACH	\$25,000
45-2019-803	AgWRAP	Water Supply Well & Pump	1	EACH	\$0
45-2019-804	AgWRAP	Water Supply Well & Pump	1	EACH	\$8,554
County : 46-HERTFORD					
46-2019-001	ACSP	Cover Crops	147	ACRE	\$5,479
46-2019-002	ACSP	Three Year Conservation Tillage for Grain and Cotton	89	ACRE	\$5,340
46-2019-003	ACSP	Three Year Conservation Tillage for Grain and Cotton	250	ACRE	\$9,787
46-2019-004	ACSP	Nutrient Scavenger Crop	114	ACRE	\$2,160
46-2019-005	ACSP	Cover Crops	326	ACRE	\$6,519
46-2019-006	ACSP	Abandoned Well Closure	1	EACH	\$840
46-2019-800	AgWRAP	Water Supply Well & Pump	1	EACH	\$7,500
County : 47-HOKE					
47-2019-001	ACSP	Critical Area Planting	1.3	ACRE	\$0
47-2019-002	ACSP	Cropland Conversion - Grass	14	ACRE	\$0
47-2019-003	ACSP	Cropland Conversion - Grass	27.64	ACRE	\$6,219
47-2019-004	ACSP	Grassed Waterway	1	ACRE	\$6,776
		Heavy Use Area Protection	0.5	EACH	\$810
		Livestock Exclusion Fencing	1	LinFT	\$2
		Watering Tanks (Troughs)	2	EACH	\$536
		Stream Protection Well	1	EACH	\$2,361
47-2019-005	ACSP	Cropland Conversion - Grass	10.76	ACRE	\$2,421
47-2019-006	ACSP	Lagoon Biosolids Removal Incentive	4206	100	\$6,309
47-2019-200	ACSP	Non-Field Farm Road Repair	1	EACH	\$7,490
47-2019-700	ACSP	Disaster Pasture Renovation	3	ACRE	\$0
County : 48-HYDE					
48-2019-001	ACSP	Nutrient Management	250	ACRE	\$4,500
48-2019-002	ACSP	Water Control Structure	1	EACH	\$2,183
48-2019-003	ACSP	Water Control Structure	1	EACH	\$17,443
48-2019-004	ACSP	Water Control Structure	1	EACH	\$2,536
48-2019-005	ACSP	Water Control Structure	1	EACH	\$5,011
48-2019-006	ACSP	Water Control Structure	1	EACH	\$2,217
48-2019-007	ACSP	Cover Crops	81	ACRE	\$3,240
County : 49-IREDELL					
49-2019-001	ACSP	Cropland Conversion - Grass	55	ACRE	\$10,725
49-2019-002	ACSP	Heavy Use Area Protection	6	EACH	\$4,506
		Livestock Exclusion Fencing	4200	LinFT	\$8,845
		Stream Crossing	1	UNITS	\$3,457
		Watering Tanks (Troughs)	6	EACH	\$4,637
		Stream Protection Well	1	EACH	\$12,014
49-2019-004	ACSP	Watering Tanks (Troughs)	1	EACH	\$1,885
49-2019-005	ACSP	Cropland Conversion - Grass	24	ACRE	\$4,680
49-2019-006	ACSP	Grassed Waterway	1	ACRE	\$2,958

Appendix C

Contract Number	Program	Best Management Practice	Planned	Unit	Cost
49-2019-801	AgWRAP	Water Supply Well & Pump		1 EACH	\$3,803
County : 50-JACKSON					
50-2019-001	ACSP	Agricultural Road Repair/Stabilization	1000	LinFT	\$10,246
50-2019-002	ACSP	Heavy Use Area Protection	1	EACH	\$573
		Watering Tanks (Troughs)	1	EACH	\$1,483
50-2019-003	ACSP	Watering Tanks (Troughs)	1	EACH	\$1,611
50-2019-004	ACSP	Agricultural Road Repair/Stabilization	300	LinFT	\$3,132
		Livestock Exclusion Fencing	2000	LinFT	\$5,832
		Watering Tanks (Troughs)	2	EACH	\$3,999
50-2019-005	ACSP	Prescribed Grazing	20	ACRE	\$2,010
50-2019-006	ACSP	Heavy Use Area Protection	1	EACH	\$1,008
		Livestock Feeding Area	1	EACH	\$4,189
County : 51-JOHNSTON					
51-2019-001	ACSP	Heavy Use Area Protection	5	EACH	\$8,077
		Watering Tanks (Troughs)	5	EACH	\$8,716
51-2019-002	ACSP	Cropland Conversion - Grass	11.75	ACRE	\$3,173
51-2019-003	ACSP	Cropland Conversion - Grass	4.9	ACRE	\$1,103
51-2019-004	ACSP	Cover Crops	233	ACRE	\$9,314
51-2019-005	ACSP	Cropland Conversion - Grass	40.68	ACRE	\$11,156
51-2019-006	ACSP	Lagoon Biosolids Removal Incentive	245,000	GALLONS	\$490
51-2019-007	ACSP	Cropland Conversion - Grass	4	ACRE	\$900
51-2019-010	ACSP	Cropland Conversion - Grass	4	ACRE	\$900
51-2019-011	ACSP	Cropland Conversion - Grass	15.33	ACRE	\$3,450
51-2019-012	ACSP	Disaster Winter Forage Crop Incentive	131.31	ACRE	\$2,627
		Disaster Pasture Renovation	131.3	ACRE	\$28,499
51-2019-013	ACSP	Cropland Conversion - Grass	22.95	ACRE	\$5,164
51-2019-014	ACSP	Cropland Conversion - Grass	28.58	ACRE	\$6,431
51-2019-015	ACSP	Rooftop Runoff Management System	1	EACH	\$4,941
51-2019-017	ACSP	Rooftop Runoff Management System	1	EACH	\$2,169
51-2019-018	ACSP	Pasture Renovation	35.93	ACRE	\$8,085
51-2019-019	ACSP	Disaster Pasture Renovation	5.13	ACRE	\$1,262
51-2019-020	ACSP	Non-Field Farm Road Repair	1	EACH	\$2,199
51-2019-401	ACSP	Non-Field Farm Road Repair	1	EACH	\$12,624
51-2019-402	ACSP	Non-Field Farm Road Repair	2	EACH	\$12,900
51-2019-404	ACSP	Non-Field Farm Road Repair	1	EACH	\$6,790
51-2019-406	ACSP	Non-Field Farm Road Repair	1	EACH	\$1,193
51-2019-407	ACSP	Agricultural Road Repair/Stabilization	600	LinFT	\$4,301
		Non-Field Farm Road Repair	1	EACH	\$1,795
51-2019-801	AgWRAP	Water Supply Well & Pump	1	EACH	\$6,000
51-2019-802	AgWRAP	Water Supply Well & Pump	1	EACH	\$6,000
51-2019-803	AgWRAP	Water Supply Well & Pump	1	EACH	\$6,000
51-2019-804	AgWRAP	Agriculture Pond Repair/Retrofit	1	EACH	\$167,404
County : 52-JONES					
52-2019-001	ACSP	Grassed Waterway	0.35	ACRE	\$3,894
52-2019-002	ACSP	Cover Crops	374	ACRE	\$14,957
52-2019-003	ACSP	Cover Crops	221.81	ACRE	\$8,872
52-2019-004	ACSP	Cover Crops	35.98	ACRE	\$1,439
52-2019-005	ACSP	Cropland Conversion - Grass	31.37	ACRE	\$7,058
52-2019-301	ACSP	Non-Field Farm Road Repair	1	EACH	\$4,652
52-2019-302	ACSP	Non-Field Farm Road Repair	1	EACH	\$2,088

Appendix C

Contract Number	Program	Best Management Practice	Planned	Unit	Cost
52-2019-303	ACSP	Emergency Access Restoration	44.6	EACH	\$661
52-2019-305	ACSP	Emergency Access Restoration	1	EACH	\$784
52-2019-306	ACSP	Emergency Access Restoration	86.4	EACH	\$1,280
52-2019-307	ACSP	Non-Field Farm Road Repair	1	EACH	\$6,704
52-2019-401	ACSP	Disaster Lagoon Management Incentive	17000	GALLONS	\$17,000
52-2019-402	ACSP	Disaster Lagoon Management Incentive	50311	GALLONS	\$25,156
52-2019-601	ACSP	Disaster Pasture Renovation	48.07	ACRE	\$10,816
52-2019-602	ACSP	Disaster Pasture Renovation	25.83	ACRE	\$6,974
52-2019-603	ACSP	Disaster Winter Forage Crop Incentive	76.33	ACRE	\$1,527
52-2019-604	ACSP	Disaster Winter Forage Crop Incentive	82.16	ACRE	\$1,643
52-2019-605	ACSP	Disaster Pasture Renovation	61.42	ACRE	\$12,600
52-2019-606	ACSP	Disaster Winter Forage Crop Incentive	44.05	ACRE	\$881
52-2019-607	ACSP	Disaster Pasture Renovation	71.62	ACRE	\$16,116
52-2019-608	ACSP	Disaster Pasture Renovation	17.95	ACRE	\$4,039
52-2019-609	ACSP	Disaster Pasture Renovation	23.36	ACRE	\$5,256
52-2019-610	ACSP	Disaster Pasture Renovation	14.6	ACRE	\$3,285
52-2019-801	AgWRAP	Water Supply Well & Pump	1	EACH	\$7,499
County : 53-LEE					
53-2019-001	ACSP	Cropland Conversion - Grass	20.1	ACRE	\$4,524
53-2019-002	ACSP	Critical Area Planting	0.2	ACRE	\$675
53-2019-003	ACSP	Sod-Based Rotation - 5 Year SBR (41 months)	9	ACRE	\$1,575
53-2019-004	ACSP	Field Border	0.4	ACRE	\$690
		Grassed Waterway	0.2	ACRE	\$713
		Critical Area Planting	0.1	ACRE	\$432
		Land Smoothing	0.2	ACRE	\$30
		Terrace	400	LinFT	\$435
53-2019-005	ACSP	Sod-Based Rotation - 5 Year SBR (41 months)	8.3	ACRE	\$1,453
53-2019-006	ACSP	Field Border	0.5	ACRE	\$920
53-2019-007	ACSP	Field Border	0.4	ACRE	\$735
		Grassed Waterway	0.3	ACRE	\$1,109
		Terrace	530	LinFT	\$1,332
53-2019-008	ACSP	Grassed Waterway	1.4	ACRE	\$3,415
		Terrace	1915	LinFT	\$3,643
53-2019-009	ACSP	Heavy Use Area Protection	1	EACH	\$1,654
53-2019-010	ACSP	Grassed Waterway	0.2	ACRE	\$1,323
53-2019-011	ACSP	Cropland Conversion - Grass	13.2	ACRE	\$2,971
53-2019-012	ACSP	Heavy Use Area Protection	1	EACH	\$2,846
53-2019-013	ACSP	Cropland Conversion - Grass	9.7	ACRE	\$2,183
53-2019-014	ACSP	Pasture Renovation	8.3	ACRE	\$2,490
		Heavy Use Area Protection	1	EACH	\$1,980
53-2019-015	ACSP	Field Border	0.5	ACRE	\$113
		Grassed Waterway	0.2	ACRE	\$569
		Diversion	575	LinFT	\$600
53-2019-100	ACSP	Disaster Winter Forage Crop Incentive	11.3	ACRE	\$226
53-2019-201	ACSP	Non-Field Farm Road Repair	1	EACH	\$8,161
53-2019-202	ACSP	Non-Field Farm Road Repair	1	EACH	\$2,969
53-2019-203	ACSP	Non-Field Farm Road Repair	1	EACH	\$1,842
53-2019-204	ACSP	Non-Field Farm Road Repair	1	EACH	\$2,811
53-2019-206	ACSP	Non-Field Farm Road Repair	1	EACH	\$11,597

Appendix C

Contract Number	Program	Best Management Practice	Planned	Unit	Cost
53-2019-207	ACSP	Non-Field Farm Road Repair		1 EACH	\$8,935
53-2019-208	ACSP	Non-Field Farm Road Repair		1 EACH	\$1,185
53-2019-501	CCAP	Bioretention areas		1 EACH	\$20,000
53-2019-801	AgWRAP	Agricultural Water Supply/Reuse Pond		1 EACH	\$24,423
53-2019-802	AgWRAP	Water Supply Well & Pump		1 EACH	\$300
County : 54-LENOIR					
54-2019-001	ACSP	Cover Crops	265.5	ACRE	\$10,620
54-2019-002	ACSP	Cropland Conversion - Grass	47	ACRE	\$12,690
54-2019-003	ACSP	Cropland Conversion - Grass	5.5	ACRE	\$1,485
54-2019-004	ACSP	Rooftop Runoff Management System		1 EACH	\$11,442
54-2019-005	ACSP	Grassed Waterway	1.5	ACRE	\$5,721
54-2019-006	ACSP	Grassed Waterway		1 ACRE	\$4,332
54-2019-007	ACSP	Cropland Conversion - Grass	24	ACRE	\$3,148
54-2019-300	ACSP	Non-Field Farm Road Repair		1 EACH	\$27,147
54-2019-301	ACSP	Non-Field Farm Road Repair		1 EACH	\$1,732
54-2019-302	ACSP	Non-Field Farm Road Repair		1 EACH	\$5,219
54-2019-303	ACSP	Non-Field Farm Road Repair		1 EACH	\$4,711
54-2019-305	AgWRAP	Agricultural Water Supply/Reuse Pond		1 EACH	\$25,000
54-2019-306	ACSP	Emergency Access Restoration		1 EACH	\$2,385
54-2019-308	ACSP	Non-Field Farm Road Repair		1 EACH	\$23,059
54-2019-310	ACSP	Non-Field Farm Road Repair		1 EACH	\$2,850
		Emergency Access Restoration		1 EACH	\$6,446
54-2019-314	ACSP	Emergency Access Restoration		1 EACH	\$14,947
54-2019-315	ACSP	Non-Field Farm Road Repair		1 EACH	\$3,925
54-2019-316	ACSP	Emergency Access Restoration		1 EACH	\$2,498
54-2019-331	ACSP	Non-Field Farm Road Repair		1 EACH	\$6,612
54-2019-332	ACSP	Non-Field Farm Road Repair		1 EACH	\$4,675
54-2019-335	ACSP	Emergency Access Restoration		1 EACH	\$7,735
54-2019-336	ACSP	Non-Field Farm Road Repair		1 EACH	\$32,121
54-2019-350	AgWRAP	Agriculture Pond Repair/Retrofit		1 EACH	\$4,691
54-2019-380	ACSP	Pasture Renovation	19.53	ACRE	\$5,273
54-2019-381	ACSP	Disaster Pasture Renovation	14.69	ACRE	\$3,305
54-2019-383	ACSP	Disaster Pasture Renovation		1 ACRE	\$6,076
54-2019-384	ACSP	Disaster Pasture Renovation	26.58	ACRE	\$7,150
54-2019-385	ACSP	Disaster Pasture Renovation		0 ACRE	\$338
54-2019-390	ACSP	Disaster Lagoon Management Incentive	24758	GALLONS	\$16,879
54-2019-600	ACSP	Cropland Conversion - Trees	20	ACRE	\$2,994
54-2019-801	AgWRAP	Water Supply Well & Pump		1 EACH	\$6,315
54-2019-802	AgWRAP	Water Supply Well & Pump		1 EACH	\$227
54-2019-803	AgWRAP	Water Supply Well & Pump		1 EACH	\$2,458
County : 55-LINCOLN					
55-2019-375	ACSP	Agricultural Road Repair/Stabilization	1750	LinFT	\$31,066
55-2019-377	ACSP	Feeding/Waste Storage Structure		1 EACH	\$5,023
55-2019-378	ACSP	Waste Treatment Storage Pond		1 EACH	\$20,260
55-2019-818	AgWRAP	Water Supply Well & Pump	445.9	EACH	\$8,026
55-2019-819	AgWRAP	Water Supply Well & Pump		1 EACH	\$8,143
55-2019-820	AgWRAP	Agricultural Water Supply/Reuse Pond		1 EACH	\$25,000
55-2019-821	AgWRAP	Agricultural Water Supply/Reuse Pond		1 EACH	\$25,000
55-2019-822	AgWRAP	Agriculture Pond Repair/Retrofit		1 EACH	\$25,000

Appendix C

Contract Number	Program	Best Management Practice	Planned	Unit	Cost
County : 56-MACON					
56-2019-001	ACSP	Heavy Use Area Protection	1	EACH	\$634
		Livestock Exclusion Fencing	350	LinFT	\$851
		Watering Tanks (Troughs)	1	EACH	\$977
56-2019-002	ACSP	Critical Area Planting	0.33	ACRE	\$1,532
		Stock Trails & Walkways	175	LinFT	\$4,181
56-2019-003	ACSP	Heavy Use Area Protection	0.3	EACH	\$17,841
		Stock Trails & Walkways	150	LinFT	\$2,477
56-2019-004	ACSP	Heavy Use Area Protection	0.1	EACH	\$2,873
		Stock Trails & Walkways	120	LinFT	\$1,950
County : 57-MADISON					
57-2019-001	ACSP	Livestock Exclusion Fencing	1692	LinFT	\$4,112
		Stream Protection Well	1	EACH	\$250
57-2019-002	ACSP	Critical Area Planting	0.25	ACRE	\$618
		Drought Pasture Renovation	9	ACRE	\$1,216
57-2019-003	ACSP	Agricultural Road Repair/Stabilization	1700	LinFT	\$14,218
		Heavy Use Area Protection	1	EACH	\$639
		Livestock Exclusion Fencing	10	LinFT	\$24
		Livestock Feeding Area	1	EACH	\$6,974
		Spring Development	1	EACH	\$124
		Watering Tanks (Troughs)	1	EACH	\$900
57-2019-004	ACSP	Agricultural Road Repair/Stabilization	2600	LinFT	\$10,538
57-2019-101	ACSP	Non-Field Farm Road Repair	5293	EACH	\$88,351
57-2019-201	ACSP	Heavy Use Area Protection	1	EACH	\$1,416
		Livestock Exclusion Fencing	2	LinFT	\$2
		Spring Development	1	EACH	\$1,614
		Stream Crossing	1	UNITS	\$2,005
		Watering Tanks (Troughs)	3	EACH	\$3,895
57-2019-501	CCAP	Stream restoration	300	LinFT	\$7,000
57-2019-801	AgWRAP	Water Supply Well & Pump	1	EACH	\$7,499
57-2019-999	ACSP	Rooftop Runoff Management System	400	EACH	\$866
		Heavy Use Area Protection	5	EACH	\$2,308
		Livestock Exclusion Fencing	1081	LinFT	\$2,627
		Watering Tanks (Troughs)	4	EACH	\$5,792
		Stream Protection Well	1	EACH	\$8,887
County : 58-MARTIN					
58-2019-001	ACSP	Grassed Waterway	0.5	ACRE	\$4,102
58-2019-002	ACSP	Rooftop Runoff Management System	1	EACH	\$1,476
58-2019-003	ACSP	Rooftop Runoff Management System	1	EACH	\$5,979
58-2019-004	ACSP	Rooftop Runoff Management System	1	EACH	\$4,811
58-2019-005	ACSP	Cropland Conversion - Trees	23.6	ACRE	\$4,744
58-2019-006	ACSP	Pasture Renovation	25.4	ACRE	\$7,620
58-2019-007	ACSP	Cropland Conversion - Grass	6	ACRE	\$1,350
County : 59-MCDOWELL					
59-2019-001	ACSP	Agricultural Road Repair/Stabilization	40	LinFT	\$2,163
		Grade Stabilization Structure	1	EACH	\$4,195
		Grassed Waterway	0.2	ACRE	\$6,831
		Critical Area Planting	0.5	ACRE	\$315
		Heavy Use Area Protection	2	EACH	\$4,510
		Livestock Exclusion Fencing	2000	LinFT	\$5,580

Appendix C

Contract Number	Program	Best Management Practice	Planned	Unit	Cost
		Livestock Feeding Area	1	EACH	\$7,290
		Stock Trails & Walkways	75	LinFT	\$1,915
59-2019-002	ACSP	Watering Tanks (Troughs)	1	EACH	\$2,408
59-2019-801	AgWRAP	Water Supply Well & Pump	1	EACH	\$7,498
County : 60-MECKLENBURG					
60-2019-001	AgWRAP	Water Supply Well & Pump	100	EACH	\$1,188
60-2019-002	AgWRAP	Water Supply Well & Pump	1	EACH	\$9,388
60-2019-003	ACSP	Heavy Use Area Protection	1	EACH	\$6,407
60-2019-004	ACSP	Stream Restoration	800	LinFT	\$22,500
County : 61-MITCHELL					
61-2019-001	ACSP	Livestock Exclusion Fencing	3750	LinFT	\$9,112
		Watering Tanks (Troughs)	5	EACH	\$9,462
		Stream Protection Well	1	EACH	\$2,263
61-2019-002	ACSP	Agricultural Road Repair/Stabilization	150	LinFT	\$3,179
		Livestock Feeding Area	1	EACH	\$5,517
61-2019-003	ACSP	Stream Crossing	650	UNITS	\$585
61-2019-004	ACSP	Heavy Use Area Protection	1	EACH	\$1,018
61-2019-005	ACSP	Pasture Renovation	6	ACRE	\$1,800
		Spring Development	1	EACH	\$644
		Watering Tanks (Troughs)	2	EACH	\$3,273
61-2019-006	ACSP	Heavy Use Area Protection	3	EACH	\$2,092
		Livestock Exclusion Fencing	900	LinFT	\$2,187
		Watering Tanks (Troughs)	1	EACH	\$2,503
61-2019-007	ACSP	Heavy Use Area Protection	1	EACH	\$1,420
		Livestock Exclusion Fencing	575	LinFT	\$1,234
		Stock Trails & Walkways	150	LinFT	\$3,791
		Watering Tanks (Troughs)	1	EACH	\$2,639
61-2019-008	ACSP	Heavy Use Area Protection	1	EACH	\$966
		Watering Tanks (Troughs)	1	EACH	\$1,910
61-2019-009	ACSP	Heavy Use Area Protection	1	EACH	\$840
		Livestock Exclusion Fencing	875	LinFT	\$2,551
		Stream Crossing	1	UNITS	\$1,490
		Watering Tanks (Troughs)	1	EACH	\$2,960
61-2019-010	ACSP	Agricultural Road Repair/Stabilization	525	LinFT	\$8,500
		Livestock Exclusion Fencing	1835	LinFT	\$4,705
		Watering Tanks (Troughs)	2	EACH	\$3,998
61-2019-011	ACSP	Agricultural Road Repair/Stabilization	550	LinFT	\$6,571
61-2019-501	CCAP	Cisterns	2	EACH	\$20,000
61-2019-801	AgWRAP	Water Supply Well & Pump	1	EACH	\$6,198
County : 62-MONTGOMERY					
62-2019-001	ACSP	Livestock Exclusion Fencing	8900	LinFT	\$16,506
		Watering Tanks (Troughs)	7	EACH	\$6,980
62-2019-002	ACSP	Dry Stack	1	EACH	\$13,905
62-2019-003	ACSP	Emergency Access Restoration	1	EACH	\$1,531
62-2019-801	AgWRAP	Water Supply Well & Pump	1	EACH	\$7,499
County : 63-MOORE					
63-2019-001	ACSP	Critical Area Planting	2	ACRE	\$3,431
63-2019-002	ACSP	Cropland Conversion - Grass	20	ACRE	\$4,500
63-2019-003	ACSP	Disaster Pasture Renovation	20	ACRE	\$4,500

Appendix C

Contract Number	Program	Best Management Practice	Planned	Unit	Cost
63-2019-004	ACSP	Disaster Pasture Renovation	20	ACRE	\$4,500
63-2019-005	ACSP	Disaster Pasture Renovation	49	ACRE	\$11,025
63-2019-006	ACSP	Disaster Pasture Renovation	120	ACRE	\$33,750
63-2019-007	ACSP	Disaster Pasture Renovation	15	ACRE	\$3,375
63-2019-008	ACSP	Disaster Pasture Renovation	10	ACRE	\$2,250
63-2019-009	ACSP	Disaster Winter Forage Crop Incentive	10	ACRE	\$200
63-2019-010	ACSP	Disaster Winter Forage Crop Incentive	36	ACRE	\$720
63-2019-011	ACSP	Disaster Winter Forage Crop Incentive	14	ACRE	\$280
63-2019-012	ACSP	Disaster Winter Forage Crop Incentive	75	ACRE	\$1,500
63-2019-013	ACSP	Disaster Winter Forage Crop Incentive	51	ACRE	\$1,020
63-2019-014	ACSP	Disaster Winter Forage Crop Incentive	170	ACRE	\$3,400
63-2019-015	ACSP	Agricultural Road Repair/Stabilization	100	LinFT	\$6,375
63-2019-016	ACSP	Disaster Winter Forage Crop Incentive	13	ACRE	\$260
63-2019-017	ACSP	Disaster Winter Forage Crop Incentive	15	ACRE	\$300
63-2019-018	ACSP	Disaster Winter Forage Crop Incentive	200	ACRE	\$4,000
63-2019-019	ACSP	Disaster Pasture Renovation	15	ACRE	\$3,375
63-2019-020	ACSP	Disaster Pasture Renovation	15	ACRE	\$3,375
63-2019-021	ACSP	Disaster Pasture Renovation	11	ACRE	\$2,475
63-2019-022	ACSP	Disaster Pasture Renovation	25	ACRE	\$5,625
63-2019-023	ACSP	Disaster Pasture Renovation	11	ACRE	\$2,475
63-2019-024	ACSP	Disaster Pasture Renovation	13	ACRE	\$2,925
63-2019-025	ACSP	Disaster Winter Forage Crop Incentive	9	ACRE	\$180
63-2019-026	ACSP	Disaster Pasture Renovation	25	ACRE	\$2,641
63-2019-027	ACSP	Disaster Pasture Renovation	144	ACRE	\$32,400
63-2019-029	ACSP	Disaster Pasture Renovation	16	ACRE	\$3,600
63-2019-030	ACSP	Disaster Pasture Renovation	25	ACRE	\$5,625
63-2019-032	ACSP	Disaster Pasture Renovation	3	ACRE	\$675
63-2019-033	ACSP	Disaster Pasture Renovation	5	ACRE	\$1,125
63-2019-036	ACSP	Disaster Pasture Renovation	20	ACRE	\$4,500
63-2019-037	ACSP	Disaster Pasture Renovation	16.5	ACRE	\$3,713
63-2019-038	ACSP	Disaster Pasture Renovation	25	ACRE	\$5,625
63-2019-039	ACSP	Dry Stack	1	EACH	\$29,964
63-2019-040	ACSP	Disaster Winter Forage Crop Incentive	35	ACRE	\$700
County : 64-NASH					
64-2019-001	ACSP	Cover Crops	158.3	ACRE	\$6,332
64-2019-002	ACSP	Cropland Conversion - Grass	5.6	ACRE	\$1,512
64-2019-003	ACSP	Closure - Waste Impoundments	2	EACH	\$46,481
64-2019-801	AgWRAP	Agricultural Pond Sediment Removal	1	EACH	\$5,000
64-2019-802	AgWRAP	Agriculture Pond Repair/Retrofit	1	EACH	\$62,651
County : 66-NORTHAMPTON					
66-2019-001	ACSP	Grassed Waterway	0.4	ACRE	\$1,185
66-2019-002	ACSP	Grassed Waterway	1.2	ACRE	\$3,258
66-2019-003	ACSP	Grassed Waterway	1.2	ACRE	\$4,821
66-2019-004	ACSP	Grassed Waterway	0.2	ACRE	\$676
		Rock-lined Outlet	1	EACH	\$8,713
66-2019-005	ACSP	Lagoon Biosolids Removal Incentive	266600	GALLONS	\$3,999
66-2019-006	ACSP	Grassed Waterway	0.8	ACRE	\$3,389
66-2019-007	ACSP	Grassed Waterway	1.6	ACRE	\$4,740

Appendix C

Contract Number	Program	Best Management Practice	Planned	Unit	Cost
County : 67-ONSLOW					
67-2019-001	ACSP	Cover Crops	75.5	ACRE	\$3,020
67-2019-002	ACSP	Cropland Conversion - Grass	17.22	ACRE	\$3,875
67-2019-003	ACSP	Cover Crops	53.62	ACRE	\$3,069
67-2019-004	ACSP	Cropland Conversion - Grass	15	ACRE	\$3,375
67-2019-005	ACSP	Cropland Conversion - Grass	39.76	ACRE	\$8,946
67-2019-006	ACSP	Streambank and Shoreline Protection	88	LinFT	\$0
		Stream Restoration	88	LinFT	\$0
67-2019-007	ACSP	Cropland Conversion - Grass	16.88	ACRE	\$11,448
67-2019-008	ACSP	Cropland Conversion - Grass	4	ACRE	\$900
67-2019-009	ACSP	Cropland Conversion - Grass	23.24	ACRE	\$5,229
67-2019-101	ACSP	Disaster Winter Forage Crop Incentive	12.1	ACRE	\$242
67-2019-102	ACSP	Disaster Winter Forage Crop Incentive	58.32	ACRE	\$1,167
67-2019-103	ACSP	Disaster Winter Forage Crop Incentive	36.78	ACRE	\$735
67-2019-104	ACSP	Disaster Winter Forage Crop Incentive	22.78	ACRE	\$455
67-2019-105	ACSP	Disaster Winter Forage Crop Incentive	50.87	ACRE	\$1,017
67-2019-106	ACSP	Disaster Winter Forage Crop Incentive	9.41	ACRE	\$188
67-2019-107	ACSP	Non-Field Farm Road Repair	30	EACH	\$1,727
67-2019-108	ACSP	Non-Field Farm Road Repair	30	EACH	\$7,500
67-2019-109	ACSP	Non-Field Farm Road Repair	1	EACH	\$2,103
67-2019-110	ACSP	Emergency Access Restoration	1	EACH	\$1,087
67-2019-111	ACSP	Non-Field Farm Road Repair	1	EACH	\$3,020
67-2019-112	ACSP	Non-Field Farm Road Repair	1	EACH	\$5,547
67-2019-113	ACSP	Emergency Access Restoration	1	EACH	\$1,074
67-2019-114	ACSP	Non-Field Farm Road Repair	3	EACH	\$9,509
67-2019-501	CCAP	Backyard rain garden	1	EACH	\$2,467
67-2019-502	CCAP	Critical area planting	2105	SqFt	\$7,628
67-2019-504	CCAP	Backyard rain garden	2	EACH	\$4,103
		Cisterns	2	EACH	\$4,571
		Critical area planting	300	SqFt	\$228
67-2019-801	AgWRAP	Water Supply Well & Pump	1	EACH	\$5,963
67-2019-802	AgWRAP	Water Supply Well & Pump	1	EACH	\$1,537
67-2019-803	AgWRAP	Water Supply Well & Pump	1	EACH	\$4,352
67-2019-804	AgWRAP	Agriculture Pond Repair/Retrofit	1	EACH	\$24,997
67-2019-900	CCAP	Marsh sills	265	LinFT	\$36,002
67-2019-901	ACSP	Cropland Conversion - Trees	34.5	ACRE	\$10,522
County : 68-ORANGE					
68-2019-001	ACSP	Livestock Exclusion Fencing	1173	LinFT	\$2,111
68-2019-002	ACSP	Cropland Conversion - Trees	21.92	ACRE	\$2,383
68-2019-003	ACSP	Cover Crops	30	ACRE	\$1,200
68-2019-004	ACSP	Cover Crops	8.32	ACRE	\$333
68-2019-005	ACSP	Agricultural Road Repair/Stabilization	650	LinFT	\$11,380
68-2019-006	ACSP	Streambank and Shoreline Protection	33	LinFT	\$1,403
68-2019-007	ACSP	Cover Crops	11.6	ACRE	\$464
68-2019-008	ACSP	Cover Crops	30	ACRE	\$1,200
68-2019-009	ACSP	Cover Crops	27.84	ACRE	\$1,114
68-2019-010	ACSP	Closure - Waste Impoundments	1	EACH	\$9,709
68-2019-011	ACSP	Closure - Waste Impoundments	1	EACH	\$4,245
68-2019-012	ACSP	Stock Trails & Walkways	1373	LinFT	\$3,573
		Stream Crossing	1	UNITS	\$1,117
68-2019-013	ACSP	Diversion	570	LinFT	\$1,710
68-2019-014	ACSP	Closure - Waste Impoundments	1	EACH	\$24,658

Appendix C

Contract Number	Program	Best Management Practice	Planned	Unit	Cost
68-2019-501	CCAP	Backyard rain garden	1	EACH	\$3,654
		Critical area planting	3000	SqFt	\$346
68-2019-801	AgWRAP	Water Supply Well & Pump	1	EACH	\$7,500
County : 69-PAMLICO					
69-2019-002	ACSP	Land Smoothing	64	ACRE	\$9,600
69-2019-003	ACSP	Land Smoothing	100	ACRE	\$15,000
69-2019-005	ACSP	Water Control Structure	4	EACH	\$7,363
69-2019-006	ACSP	Land Smoothing	27	ACRE	\$15,000
69-2019-111	ACSP	Disaster Winter Forage Crop Incentive	64	ACRE	\$1,650
		Disaster Pasture Renovation	64	ACRE	\$24,750
County : 70-PASQUOTANK					
70-2019-001	ACSP	Cover Crops	107.8	ACRE	\$4,312
70-2019-002	ACSP	Cover Crops	166.7	ACRE	\$6,668
70-2019-003	ACSP	Precision Agrichemical Application	1	EACH	\$6,000
70-2019-004	ACSP	Grade Stabilization Structure	3	EACH	\$4,060
		Crop Residue Management	19	ACRE	\$285
		Land Smoothing	50	ACRE	\$7,500
70-2019-005	ACSP	Land Smoothing	46.8	ACRE	\$4,680
County : 71-PENDER					
71-2019-002	ACSP	Cropland Conversion - Grass	37.03	ACRE	\$9,998
71-2019-003	ACSP	Rooftop Runoff Management System	1	EACH	\$9,344
71-2019-004	ACSP	Agrichemical Containment and Mixing Facility	1	EACH	\$9,999
71-2019-006	ACSP	Cropland Conversion - Grass	11.86	ACRE	\$3,202
71-2019-302	ACSP	Disaster Pasture Renovation	130	ACRE	\$35,100
71-2019-304	ACSP	Disaster Pasture Renovation	28	ACRE	\$4,983
71-2019-305	ACSP	Disaster Pasture Renovation	43.5	ACRE	\$4,707
71-2019-306	ACSP	Disaster Pasture Renovation	18	ACRE	\$4,860
71-2019-308	ACSP	Disaster Pasture Renovation	62.3	ACRE	\$16,821
71-2019-310	ACSP	Disaster Pasture Renovation	50	ACRE	\$13,500
71-2019-311	ACSP	Disaster Pasture Renovation	34.9	ACRE	\$9,423
71-2019-313	ACSP	Disaster Pasture Renovation	27.5	ACRE	\$7,425
71-2019-321	ACSP	Disaster Pasture Renovation	24	ACRE	\$6,480
71-2019-502	ACSP	Disaster Winter Forage Crop Incentive	130	ACRE	\$2,340
71-2019-505	ACSP	Disaster Winter Forage Crop Incentive	18.5	ACRE	\$333
71-2019-506	ACSP	Disaster Winter Forage Crop Incentive	18	ACRE	\$324
71-2019-509	ACSP	Disaster Winter Forage Crop Incentive	20	ACRE	\$360
71-2019-510	ACSP	Disaster Winter Forage Crop Incentive	35	ACRE	\$630
71-2019-511	ACSP	Disaster Winter Forage Crop Incentive	34.9	ACRE	\$628
71-2019-512	ACSP	Disaster Winter Forage Crop Incentive	31.1	ACRE	\$560
71-2019-513	ACSP	Disaster Winter Forage Crop Incentive	27.5	ACRE	\$495
71-2019-623	ACSP	Non-Field Farm Road Repair	2	EACH	\$7,499
71-2019-626	ACSP	Non-Field Farm Road Repair	1	EACH	\$7,500
71-2019-627	ACSP	Non-Field Farm Road Repair	1	EACH	\$3,999
71-2019-628	ACSP	Non-Field Farm Road Repair	1	EACH	\$3,853
71-2019-716	ACSP	Disaster Lagoon Management Incentive	3550400	GALLONS	\$17,752
71-2019-719	ACSP	Disaster Lagoon Management Incentive	942900	GALLONS	\$4,715
71-2019-720	ACSP	Disaster Lagoon Management Incentive	1431600	GALLONS	\$7,158

Appendix C

Contract Number	Program	Best Management Practice	Planned	Unit	Cost
71-2019-721	ACSP	Disaster Lagoon Management Incentive	2148300	GALLONS	\$21,483
71-2019-722	ACSP	Disaster Lagoon Management Incentive	987642	GALLONS	\$4,938
71-2019-723	ACSP	Disaster Lagoon Management Incentive	1089561	GALLONS	\$5,448
71-2019-724	ACSP	Disaster Lagoon Management Incentive	2600000	GALLONS	\$13,000
71-2019-801	AgWRAP	Ag Water Collection System	1		\$6,788
County : 72-PERQUIMANS					
72-2019-001	ACSP	Land Smoothing	23.22	ACRE	\$3,483
72-2019-002	ACSP	Land Smoothing	37.13	ACRE	\$5,570
72-2019-003	ACSP	Land Smoothing	40	ACRE	\$6,000
72-2019-004	ACSP	Cover Crops	45.25	ACRE	\$1,810
72-2019-005	ACSP	Cover Crops	75	ACRE	\$3,000
72-2019-006	ACSP	Cover Crops	75	ACRE	\$3,000
72-2019-007	ACSP	Long-Term No-till	20	ACRE	\$3,000
72-2019-008	ACSP	Land Smoothing	8	ACRE	\$1,200
72-2019-009	ACSP	Land Smoothing	8	ACRE	\$1,200
72-2019-010	ACSP	Land Smoothing	24.49	ACRE	\$4,592
72-2019-100	ACSP	Land Smoothing	40.56	ACRE	\$6,084
County : 73-PERSON					
73-2019-001	ACSP	Cropland Conversion - Grass	14	ACRE	\$3,780
73-2019-002	ACSP	Field Border	0.22	ACRE	\$537
		Grassed Waterway	1.07	ACRE	\$2,928
		Diversion	1270	LinFT	\$1,411
73-2019-003	ACSP	Heavy Use Area Protection	6	EACH	\$0
		Livestock Exclusion Fencing	4500	LinFT	\$0
		Watering Tanks (Troughs)	6	EACH	\$0
		Stream Protection Well	1	EACH	\$0
73-2019-004	ACSP	Grassed Waterway	0.41	ACRE	\$1,122
		Diversion	300	LinFT	\$330
73-2019-005	ACSP	Grassed Waterway	1.2	ACRE	\$2,860
73-2019-006	ACSP	Grassed Waterway	1.2	ACRE	\$3,285
73-2019-007	ACSP	Grassed Waterway	0.62	ACRE	\$1,755
73-2019-008	ACSP	Field Border	1.12	ACRE	\$2,730
		Grassed Waterway	0.56	ACRE	\$1,533
73-2019-009	ACSP	Heavy Use Area Protection	3	EACH	\$2,484
		Livestock Exclusion Fencing	1750	LinFT	\$3,465
		Watering Tanks (Troughs)	3	EACH	\$7,884
		Stream Protection Well	1	EACH	\$9,165
73-2019-801	AgWRAP	Water Supply Well & Pump	1	EACH	\$7,500
County : 74-PITT					
74-2019-001	ACSP	Grassed Waterway	0.4	ACRE	\$7,042
74-2019-002	ACSP	Cover Crops	187.5	ACRE	\$7,500
74-2019-003	ACSP	Cover Crops	187.5	ACRE	\$7,500
74-2019-005	ACSP	Grassed Waterway	0.55	ACRE	\$3,255
74-2019-006	ACSP	Grassed Waterway	0.2	ACRE	\$1,224
74-2019-007	ACSP	Grassed Waterway	0.55	ACRE	\$4,022
74-2019-008	ACSP	Grassed Waterway	0.41	ACRE	\$3,129
74-2019-009	ACSP	Grassed Waterway	0.13	ACRE	\$1,125

Appendix C

Contract Number	Program	Best Management Practice	Planned	Unit	Cost
74-2019-010	ACSP	Rooftop Runoff Management System	1	EACH	\$19,961
County : 75-POLK					
75-2019-287	ACSP	Livestock Exclusion Fencing	3900	LinFT	\$11,178
		Watering Tanks (Troughs)	3	EACH	\$4,997
		Stream Protection Well	1	EACH	\$8,825
75-2019-289	ACSP	Livestock Exclusion Fencing	700	LinFT	\$1,944
		Watering Tanks (Troughs)	1	EACH	\$2,087
75-2019-807	AgWRAP	Water Supply Well & Pump	1	EACH	\$7,500
County : 76-RANDOLPH					
76-2019-001	ACSP	Heavy Use Area Protection	6	EACH	\$718
76-2019-002	ACSP	Livestock Exclusion Fencing	1750	LinFT	\$2,559
		Watering Tanks (Troughs)	1	EACH	\$2,745
		Stream Protection Well	1	EACH	\$5,342
76-2019-003	ACSP	Dry Stack	1	EACH	\$45,212
76-2019-301	ACSP	Disaster Pasture Renovation	35	ACRE	\$9,000
76-2019-302	ACSP	Non-Field Farm Road Repair	1	EACH	\$4,544
76-2019-303	ACSP	Non-Field Farm Road Repair	1	EACH	\$1,124
76-2019-304	ACSP	Non-Field Farm Road Repair	1	EACH	\$1,006
76-2019-305	ACSP	Disaster Lagoon Management Incentive	612406	GALLONS	\$6,000
76-2019-306	ACSP	Pasture Renovation	19	ACRE	\$4,275
76-2019-307	ACSP	Non-Field Farm Road Repair	1	EACH	\$10,746
76-2019-308	ACSP	Disaster Lagoon Management Incentive	2388800	GALLONS	\$23,888
76-2019-309	ACSP	Disaster Winter Forage Crop Incentive	16	ACRE	\$320
76-2019-310	ACSP	Disaster Pasture Renovation	5	ACRE	\$1,125
76-2019-311	ACSP	Disaster Lagoon Management Incentive	400000	GALLONS	\$4,000
76-2019-312	ACSP	Disaster Lagoon Management Incentive	441900	GALLONS	\$3,956
76-2019-801	AgWRAP	Water Supply Well & Pump	1	EACH	\$6,109
76-2019-802	AgWRAP	Water Supply Well & Pump	1	EACH	\$8,915
County : 77-RICHMOND					
77-2019-001	ACSP	Dry Stack	1	EACH	\$28,716
77-2019-005	ACSP	Cropland Conversion - Grass	16	ACRE	\$3,600
77-2019-801	AgWRAP	Water Supply Well & Pump	1	EACH	\$7,485
County : 78-ROBESON					
78-2019-001	ACSP	Three Year Conservation Tillage for Grain and Cotton	40.76	ACRE	\$2,446
78-2019-002	ACSP	Nutrient Management	374	ACRE	\$6,912
78-2019-003	ACSP	Cover Crops	190.6	ACRE	\$3,136
78-2019-004	ACSP	Heavy Use Area Protection	2	EACH	\$3,776
		Livestock Exclusion Fencing	371	LinFT	\$612
		Watering Tanks (Troughs)	2	EACH	\$2,203
78-2019-005	ACSP	Cover Crops	98.9	ACRE	\$3,956
78-2019-006	ACSP	Cropland Conversion - Grass	29.7	ACRE	\$6,683
78-2019-007	ACSP	Cropland Conversion - Grass	5.3	ACRE	\$1,193
78-2019-008	ACSP	Cropland Conversion - Grass	6.3	ACRE	\$1,418
78-2019-009	ACSP	Cropland Conversion - Trees	17.4	ACRE	\$5,286
78-2019-010	ACSP	Cropland Conversion - Grass	25.4	ACRE	\$5,715

Appendix C

Contract Number	Program	Best Management Practice	Planned	Unit	Cost
78-2019-011	ACSP	Cover Crops	96.12	ACRE	\$3,845
78-2019-100	ACSP	Disaster Lagoon Management Incentive	2395057	GALLONS	\$690
78-2019-101	ACSP	Disaster Lagoon Management Incentive	2520000	GALLONS	\$25,200
78-2019-102	ACSP	Disaster Lagoon Management Incentive	1062800	GALLONS	\$10,628
78-2019-200	ACSP	Non-Field Farm Road Repair	1	EACH	\$1,560
78-2019-201	ACSP	Non-Field Farm Road Repair	1	EACH	\$1,220
78-2019-301	ACSP	Disaster Winter Forage Crop Incentive	82.7	ACRE	\$1,654
78-2019-302	ACSP	Disaster Winter Forage Crop Incentive	36.2	ACRE	\$724
78-2019-303	ACSP	Disaster Winter Forage Crop Incentive	78.7	ACRE	\$1,574
78-2019-400	ACSP	Cropland Conversion - Grass	14.3	ACRE	\$3,218
78-2019-401	ACSP	Crop Residue Management	102.2	ACRE	\$1,534
78-2019-402	ACSP	Cropland Conversion - Grass	29.1	ACRE	\$5,625
78-2019-500	ACSP	Disaster Pasture Renovation	20.1	ACRE	\$4,523
78-2019-501	ACSP	Disaster Pasture Renovation	7.3	ACRE	\$1,643
78-2019-502	ACSP	Disaster Pasture Renovation	13.6	ACRE	\$3,061
78-2019-800	AgWRAP	Water Supply Well & Pump	1	EACH	\$5,000
78-2019-801	AgWRAP	Water Supply Well & Pump	1	EACH	\$5,000
78-2019-802	AgWRAP	Water Supply Well & Pump	1	EACH	\$4,996
78-2019-803	AgWRAP	Water Supply Well & Pump	1	EACH	\$4,928
78-2019-804	AgWRAP	Water Supply Well & Pump	1	EACH	\$5,000
78-2019-805	AgWRAP	Water Supply Well & Pump	1	EACH	\$2,963
County : 79-ROCKINGHAM					
79-2019-001	AgWRAP	Water Supply Well & Pump	1	EACH	\$7,500
79-2019-002	ACSP	Livestock Exclusion Fencing	1300	LinFT	\$1,511
		Watering Tanks (Troughs)	2	EACH	\$3,185
		Stream Protection Well	1	EACH	\$4,188
79-2019-003	ACSP	Critical Area Planting	1	ACRE	\$3,039
		Cropland Conversion - Grass	23	ACRE	\$5,175
79-2019-004	ACSP	Critical Area Planting	1	ACRE	\$3,039
		Pasture Renovation	26	ACRE	\$6,183
79-2019-005	ACSP	Watering Tanks (Troughs)	10	EACH	\$21,318
		Stream Protection Well	1	EACH	\$7,138
79-2019-006	ACSP	Pasture Renovation	20	ACRE	\$6,000
79-2019-007	ACSP	Cropland Conversion - Trees	3.2	ACRE	\$344
		Livestock Exclusion Fencing	3047	LinFT	\$1,829
		Watering Tanks (Troughs)	3	EACH	\$4,694
		Stream Protection Well	1	EACH	\$9,764
79-2019-008	ACSP	Cropland Conversion - Grass	19	ACRE	\$4,275
79-2019-009	AgWRAP	Water Supply Well & Pump	1	EACH	\$9,000
79-2019-010	AgWRAP	Water Supply Well & Pump	1	EACH	\$10,972
79-2019-011	AgWRAP	Water Supply Well & Pump	1	EACH	\$8,513
79-2019-012	AgWRAP	Conservation Irrigation Conversion	14	ACRE	\$24,999
County : 80-ROWAN					
80-2019-001	ACSP	Closure - Waste Impoundments	0	EACH	\$7,295
80-2019-002	ACSP	Heavy Use Area Protection	3	EACH	\$2,412
		Livestock Exclusion Fencing	2300	LinFT	\$10,980
		Watering Tanks (Troughs)	2500	EACH	\$6,856
		Stream Protection Well	1	EACH	\$6,163
80-2019-004	ACSP	Disaster Pasture Renovation	9	ACRE	\$2,025

Appendix C

Contract Number	Program	Best Management Practice	Planned	Unit	Cost
80-2019-005	AgWRAP	Water Supply Well & Pump	1	EACH	\$9,712
80-2019-007	AgWRAP	Conservation Irrigation Conversion	101	ACRE	\$24,998
80-2019-008	AgWRAP	Agricultural Water Supply/Reuse Pond	1	EACH	\$25,000
80-2019-009	CCAP	Stream restoration	1200	LinFT	\$20,000
80-2019-010	ACSP	Heavy Use Area Protection	4	EACH	\$3,216
		Livestock Exclusion Fencing	1000	LinFT	\$1,800
		Watering Tanks (Troughs)	4	EACH	\$6,049
		Stream Protection Well	1	EACH	\$6,163
County : 81-RUTHERFORD					
81-2019-605	AgWRAP	Water Supply Well & Pump	1	EACH	\$7,500
81-2019-920	ACSP	Heavy Use Area Protection	4	EACH	\$2,976
		Livestock Exclusion Fencing	400	LinFT	\$804
		Watering Tanks (Troughs)	4	EACH	\$7,073
		Stream Protection Well	1	EACH	\$7,138
81-2019-921	ACSP	Stream Restoration	150	LinFT	\$11,230
81-2019-922	ACSP	Heavy Use Area Protection	1	EACH	\$743
		Livestock Exclusion Fencing	60	LinFT	\$112
		Watering Tanks (Troughs)	1	EACH	\$1,981
		Stream Protection Well	1	EACH	\$7,138
81-2019-923	ACSP	Livestock Exclusion Fencing	2800	LinFT	\$5,208
		Stream Crossing	1	UNITS	\$3,421
81-2019-924	ACSP	Stream Protection Well	1	EACH	\$6,436
County : 82-SAMPSON					
82-2019-001	ACSP	Cropland Conversion - Grass	12.6	ACRE	\$2,835
		Waste Application Systems - Underground Main and Hydrant System	1	EACH	\$17,580
82-2019-002	ACSP	Cover Crops	375	ACRE	\$15,000
82-2019-003	ACSP	Cover Crops	374.98	ACRE	\$15,000
82-2019-004	ACSP	Rooftop Runoff Management System	8	EACH	\$1,204
		Cover Crops	5	ACRE	\$200
		Prescribed Grazing	61.4	ACRE	\$8,875
82-2019-005	ACSP	Cropland Conversion - Grass	54.1	ACRE	\$2,068
82-2019-006	ACSP	Cropland Conversion - Trees	8.9	ACRE	\$468
82-2019-007	ACSP	Prescribed Grazing	58.34	ACRE	\$5,250
82-2019-008	ACSP	Cropland Conversion - Trees	5.1	ACRE	\$268
82-2019-010	ACSP	Cover Crops	214.44	ACRE	\$7,865
82-2019-011	ACSP	Cover Crops	97.7	ACRE	\$3,907
82-2019-012	ACSP	Heavy Use Area Protection	1	EACH	\$1,407
		Watering Tanks (Troughs)	1	EACH	\$936
82-2019-201	ACSP	Disaster Agricultural Pond Repair/Retrofit	1	JOB	\$29,357
82-2019-301	ACSP	Non-Field Farm Road Repair	1	EACH	\$4,999
82-2019-302	ACSP	Emergency Access Restoration	1	EACH	\$6,008
82-2019-305	ACSP	Emergency Access Restoration	1	EACH	\$1,280
82-2019-308	ACSP	Non-Field Farm Road Repair	1	EACH	\$4,875
82-2019-309	ACSP	Emergency Access Restoration	1	EACH	\$309
82-2019-310	ACSP	Emergency Access Restoration	1	EACH	\$417
82-2019-311	ACSP	Emergency Access Restoration	1	EACH	\$1,460
82-2019-318	ACSP	Emergency Access Restoration	1	EACH	\$1,394
82-2019-322	ACSP	Emergency Access Restoration	1	EACH	\$3,490
82-2019-323	ACSP	Non-Field Farm Road Repair	1	EACH	\$3,895

Appendix C

Contract Number	Program	Best Management Practice	Planned	Unit	Cost
82-2019-325	ACSP	Non-Field Farm Road Repair		1 EACH	\$5,165
82-2019-357	ACSP	Emergency Access Restoration		1 EACH	\$1,009
82-2019-359	ACSP	Emergency Access Restoration		1 EACH	\$472
82-2019-363	ACSP	Emergency Access Restoration		1 EACH	\$3,669
82-2019-364	ACSP	Emergency Access Restoration		1 EACH	\$6,046
82-2019-365	ACSP	Emergency Access Restoration		1 EACH	\$359
82-2019-366	ACSP	Emergency Access Restoration		1 EACH	\$1,108
82-2019-401	ACSP	Disaster Pasture Renovation	58	ACRE	\$12,375
82-2019-402	ACSP	Disaster Pasture Renovation	37	ACRE	\$8,325
82-2019-403	ACSP	Disaster Pasture Renovation	137.48	ACRE	\$30,573
82-2019-601	ACSP	Disaster Lagoon Management Incentive	10843376	GALLONS	\$108,434
82-2019-602	ACSP	Disaster Lagoon Management Incentive	1914000	GALLONS	\$9,570
82-2019-603	ACSP	Disaster Lagoon Management Incentive	1000000	GALLONS	\$2,779
82-2019-604	ACSP	Disaster Lagoon Management Incentive	1423254	GALLONS	\$7,117
82-2019-605	ACSP	Disaster Lagoon Management Incentive	1198600	GALLONS	\$5,993
82-2019-606	ACSP	Disaster Lagoon Management Incentive	2000000	GALLONS	\$4,250
82-2019-607	ACSP	Disaster Lagoon Management Incentive	1000000	GALLONS	\$0
82-2019-608	ACSP	Disaster Lagoon Management Incentive	1200000	GALLONS	\$12,000
82-2019-609	ACSP	Disaster Lagoon Management Incentive	1994600	GALLONS	\$14,973
82-2019-610	ACSP	Disaster Lagoon Management Incentive	3001352	GALLONS	\$15,007
82-2019-611	ACSP	Disaster Lagoon Management Incentive	1000000	GALLONS	\$2,939
82-2019-612	ACSP	Disaster Lagoon Management Incentive	1008000	GALLONS	\$10,080
82-2019-613	ACSP	Disaster Lagoon Management Incentive	1256138	GALLONS	\$6,281
82-2019-614	ACSP	Disaster Lagoon Management Incentive	3855771	GALLONS	\$19,279
82-2019-615	ACSP	Disaster Lagoon Management Incentive	2972328	GALLONS	\$14,862
82-2019-616	ACSP	Disaster Lagoon Management Incentive	739525	GALLONS	\$3,698
82-2019-617	ACSP	Disaster Lagoon Management Incentive	798144	GALLONS	\$3,991
82-2019-618	ACSP	Disaster Lagoon Management Incentive	2840200	GALLONS	\$10,740
82-2019-619	ACSP	Disaster Lagoon Management Incentive	1564054	GALLONS	\$7,821
82-2019-620	ACSP	Disaster Lagoon Management Incentive	1859820	GALLONS	\$9,299
82-2019-621	ACSP	Disaster Lagoon Management Incentive	708571	GALLONS	\$3,543
82-2019-622	ACSP	Disaster Lagoon Management Incentive	2017400	GALLONS	\$10,087
82-2019-625	ACSP	Disaster Lagoon Management Incentive	611400	GALLONS	\$3,057
82-2019-626	ACSP	Disaster Lagoon Management Incentive	769300	GALLONS	\$3,847
82-2019-627	ACSP	Disaster Lagoon Management Incentive	1130700	GALLONS	\$5,654

Appendix C

Contract Number	Program	Best Management Practice	Planned	Unit	Cost
82-2019-628	ACSP	Disaster Lagoon Management Incentive	1169400	GALLONS	\$5,847
82-2019-629	ACSP	Disaster Lagoon Management Incentive	2497755	GALLONS	\$12,489
82-2019-630	ACSP	Disaster Lagoon Management Incentive	343232	GALLONS	\$1,716
82-2019-631	ACSP	Disaster Lagoon Management Incentive	1060419	GALLONS	\$5,302
82-2019-632	ACSP	Disaster Lagoon Management Incentive	833421	GALLONS	\$4,167
82-2019-633	ACSP	Disaster Lagoon Management Incentive	301434	GALLONS	\$1,507
82-2019-634	ACSP	Disaster Lagoon Management Incentive	1590780	GALLONS	\$7,954
82-2019-704	ACSP	Disaster Emergency Agricultural Pond Repair/Retrofit	1	JOB	\$9,420
82-2019-801	ACSP	Agricultural Water Collection System	1	EACH	\$0
82-2019-802	AgWRAP	Agricultural Water Supply/Reuse Pond	1	EACH	\$8,012
82-2019-803	AgWRAP	Agricultural Water Supply/Reuse Pond	1	EACH	\$25,000
County : 83-SCOTLAND					
83-2019-001	ACSP	Cropland Conversion - Grass	48	ACRE	\$0
83-2019-002	ACSP	Cover Crops	189.5	ACRE	\$4,738
83-2019-004	ACSP	Disaster Pasture Renovation	8	ACRE	\$1,440
83-2019-005	ACSP	Cropland Conversion - Grass	13	ACRE	\$4,050
83-2019-006	ACSP	Cropland Conversion - Grass	20.31	ACRE	\$5,484
83-2019-007	ACSP	Cropland Conversion - Grass	33.15	ACRE	\$8,951
83-2019-800	AgWRAP	Water Supply Well & Pump	1	EACH	\$0
83-2019-801	AgWRAP	Water Supply Well & Pump	1	EACH	\$2,939
County : 84-STANLY					
84-2019-001	ACSP	Heavy Use Area Protection	1	EACH	\$3,358
		Livestock Exclusion Fencing	1200	LinFT	\$2,376
		Watering Tanks (Troughs)	3	EACH	\$5,638
		Stream Protection Well	1	EACH	\$10,065
84-2019-002	ACSP	Cropland Conversion - Grass	49	ACRE	\$11,025
84-2019-003	ACSP	Cropland Conversion - Trees	2.5	ACRE	\$596
84-2019-004	ACSP	Heavy Use Area Protection	4	EACH	\$3,670
		Livestock Exclusion Fencing	1400	LinFT	\$2,751
		Watering Tanks (Troughs)	4	EACH	\$3,345
		Stream Protection Well	1	EACH	\$10,355
84-2019-005	ACSP	Pasture Renovation	12	ACRE	\$4,320
84-2019-006	ACSP	Pasture Renovation	12	ACRE	\$3,600
84-2019-007	ACSP	Stream Restoration	175	LinFT	\$9,987
84-2019-801	AgWRAP	Agricultural Pond Sediment Removal	1	EACH	\$1,000
84-2019-802	AgWRAP	Water Supply Well & Pump	1	EACH	\$4,733
84-2019-803	AgWRAP	Water Supply Well & Pump	1	EACH	\$3,758
County : 85-STOKES					
85-2019-001	ACSP	Cropland Conversion - Grass	7	ACRE	\$1,575
85-2019-002	ACSP	Pastureland Conversion	9	ACRE	\$1,654
85-2019-003	ACSP	Cropland Conversion - Grass	8	ACRE	\$1,800
85-2019-004	ACSP	Livestock Exclusion Fencing	2000	LinFT	\$5,400
		Watering Tanks (Troughs)	2	EACH	\$4,976
		Stream Protection Well	1	EACH	\$5,176

Appendix C

Contract Number	Program	Best Management Practice	Planned	Unit	Cost
85-2019-005	ACSP	Critical Area Planting	1	ACRE	\$2,513
		Cropland Conversion - Grass	2.33	ACRE	\$524
		Pasture Renovation	8.67	ACRE	\$2,601
85-2019-006	ACSP	Heavy Use Area Protection	1	EACH	\$4,215
		Livestock Exclusion Fencing	5089	LinFT	\$10,000
		Watering Tanks (Troughs)	2	EACH	\$5,102
85-2019-007	ACSP	Waste Application Systems - Mobile Application System	1	EACH	\$10,500
85-2019-801	AgWRAP	Water Supply Well & Pump	1	EACH	\$6,000
County : 86-SURRY					
86-2019-001	ACSP	Waste Treatment Storage Pond	1	EACH	\$25,000
86-2019-002	ACSP	Stream Crossing	1	UNITS	\$2,419
86-2019-003	ACSP	Livestock Exclusion Fencing	837	LinFT	\$2,729
86-2019-004	ACSP	Livestock Exclusion Fencing	1050	LinFT	\$3,035
		Watering Tanks (Troughs)	7	EACH	\$15,155
		Stream Protection Well	1	EACH	\$6,810
86-2019-005	ACSP	Watering Tanks (Troughs)	2	EACH	\$4,092
		Stream Protection Well	1	EACH	\$6,114
86-2019-101	ACSP	Heavy Use Area Protection	2	EACH	\$9,733
86-2019-102	ACSP	Heavy Use Area Protection	1	EACH	\$4,628
86-2019-201	AgWRAP	Water Supply Well & Pump	1	EACH	\$7,721
86-2019-202	AgWRAP	Water Supply Well & Pump	1	EACH	\$8,958
County : 87-SWAIN					
87-2019-214	ACSP	Waste Application Systems - Mobile Application System	1	EACH	\$12,870
87-2019-215	ACSP	Pasture Renovation	2	ACRE	\$450
87-2019-216	ACSP	Pasture Renovation	6	ACRE	\$1,800
County : 88-TRANSYLVANIA					
88-2019-001	ACSP	Heavy Use Area Protection	1	EACH	\$2,800
		Livestock Exclusion Fencing	41	LinFT	\$82
		Stream Crossing	1	UNITS	\$417
		Watering Tanks (Troughs)	4	EACH	\$6,127
88-2019-003	ACSP	Stream Restoration	200	LinFT	\$20,000
88-2019-005	ACSP	Agricultural Road Repair/Stabilization	125	LinFT	\$1,528
88-2019-006	ACSP	Pasture Renovation	45	ACRE	\$13,500
88-2019-007	ACSP	Heavy Use Area Protection	1	EACH	\$1,651
		Livestock Feeding Area	1	EACH	\$6,312
88-2019-501	CCAP	Streambank and shoreline protection	110	LinFT	\$2,500
County : 89-TYRRELL					
89-2019-001	ACSP	Water Control Structure	5	EACH	\$13,186
89-2019-002	ACSP	Cover Crops	40	ACRE	\$1,600
		Land Smoothing	40	ACRE	\$7,500
89-2019-003	ACSP	Land Smoothing	40	ACRE	\$7,500
89-2019-004	ACSP	Land Smoothing	15.18	ACRE	\$7,500
89-2019-005	ACSP	Water Control Structure	1	EACH	\$1,733
89-2019-006	ACSP	Cropland Conversion - Trees	17.9	ACRE	\$2,819
		Wetlands Restoration System	1	EACH	\$892
89-2019-007	ACSP	Cropland Conversion - Trees	0	ACRE	\$7,866
89-2019-008	ACSP	Cropland Conversion - Trees	7.1	ACRE	\$1,545
89-2019-009	ACSP	Closure - Waste Impoundments	3	EACH	\$29,000

Appendix C

Contract Number	Program	Best Management Practice	Planned	Unit	Cost
County : 90-UNION					
90-2019-001	ACSP	Dry Stack	1	EACH	\$39,304
90-2019-002	ACSP	Waste Application Systems - Mobile Application System	1	EACH	\$10,500
90-2019-003	ACSP	Dry Stack	1	EACH	\$33,745
90-2019-101	ACSP	Disaster Pasture Renovation	57	ACRE	\$6,524
90-2019-102	ACSP	Drought Pasture Renovation	3.95	ACRE	\$889
90-2019-103	ACSP	Disaster Winter Forage Crop Incentive	26	ACRE	\$121
90-2019-104	ACSP	Disaster Pasture Renovation	18.3	ACRE	\$1,627
90-2019-105	ACSP	Disaster Winter Forage Crop Incentive	43.47	ACRE	\$869
90-2019-106	ACSP	Disaster Pasture Renovation	14	ACRE	\$930
90-2019-107	ACSP	Disaster Pasture Renovation	17	ACRE	\$3,825
90-2019-108	ACSP	Disaster Pasture Renovation	19	ACRE	\$4,275
90-2019-109	ACSP	Disaster Winter Forage Crop Incentive	26.36	ACRE	\$527
90-2019-201	ACSP	Non-Field Farm Road Repair	1	EACH	\$4,894
90-2019-202	ACSP	Emergency Access Restoration	205	EACH	\$2,602
90-2019-801	AgWRAP	Water Supply Well & Pump	1	EACH	\$5,801
90-2019-802	AgWRAP	Water Supply Well & Pump	1	EACH	\$8,263
County : 91-VANCE					
91-2019-001	ACSP	Sod-Based Rotation - 5 Year SBR (41 months)	56	ACRE	\$9,800
91-2019-002	ACSP	Agriculture Pond Sediment Removal	1	EACH	\$5,000
91-2019-003	ACSP	Field Border	3.33	ACRE	\$8,999
91-2019-004	ACSP	Sod-Based Rotation - 5 Year SBR (41 months)	10	ACRE	\$1,750
91-2019-005	ACSP	Sod-Based Rotation - 5 Year SBR (41 months)	23.24	ACRE	\$4,067
91-2019-006	ACSP	Cover Crops	10	ACRE	\$400
91-2019-801	AgWRAP	Agricultural Pond Sediment Removal	1	EACH	\$5,000
91-2019-802	AgWRAP	Agricultural Pond Sediment Removal	1	EACH	\$5,000
County : 92-WAKE					
92-2019-001	ACSP	Cropland Conversion - Grass	15.1	ACRE	\$3,263
92-2019-002	ACSP	Cover Crops	111.6	ACRE	\$4,464
92-2019-003	ACSP	Cover Crops	98.6	ACRE	\$3,764
92-2019-004	ACSP	Field Border	0.87	ACRE	\$2,545
		Grassed Waterway	0.2	ACRE	\$790
		Cover Crops	8.54	ACRE	\$342
		Land Smoothing	2	ACRE	\$300
		Sod-Based Rotation - 5 Year SBR (41 months)	3.3	ACRE	\$577
92-2019-005	ACSP	Cropland Conversion - Grass	5	ACRE	\$1,125
92-2019-006	ACSP	Field Border	2	ACRE	\$3,600
		Grassed Waterway	3	ACRE	\$10,312
92-2019-007	ACSP	Critical Area Planting	1	ACRE	\$3,605
92-2019-008	ACSP	Field Border	0.41	ACRE	\$1,968
		Grassed Waterway	0.2	ACRE	\$827
92-2019-009	ACSP	Agricultural Road Repair/Stabilization	475	LinFT	\$630
		Field Border	0.38	ACRE	\$504
		Grassed Waterway	0.31	ACRE	\$542
92-2019-010	ACSP	Agricultural Road Repair/Stabilization	150	LinFT	\$1,663
		Grassed Waterway	0.08	ACRE	\$649

Appendix C

Contract Number	Program	Best Management Practice	Planned	Unit	Cost
		Critical Area Planting	0.22	ACRE	\$595
92-2019-011	ACSP	Heavy Use Area Protection	3	EACH	\$3,002
		Watering Tanks (Troughs)	3	EACH	\$5,904
92-2019-012	ACSP	Cropland Conversion - Grass	4.5	ACRE	\$1,013
92-2019-013	ACSP	Sod-Based Rotation - 3 Year SBR (17 months)	18.27	ACRE	\$1,371
92-2019-014	ACSP	Sod-Based Rotation - 3 Year SBR (17 months)	11.78	ACRE	\$883
92-2019-015	ACSP	Sod-Based Rotation - 3 Year SBR (17 months)	20.57	ACRE	\$1,543
92-2019-016	ACSP	Cover Crops	3.9	ACRE	\$156
92-2019-017	ACSP	Stream Crossing	1	UNITS	\$10,104
92-2019-018	ACSP	Cover Crops	30.85	ACRE	\$1,233
		Three Year Conservation Tillage for Grain and Cotton	30.85	ACRE	\$1,852
92-2019-501	CCAP	Structural Stormwater Conveyance	1	EACH	\$20,000
92-2019-801	AgWRAP	Water Supply Well & Pump	1	EACH	\$7,050
92-2019-802	AgWRAP	Water Supply Well & Pump	1	EACH	\$11,754
92-2019-803	AgWRAP	Water Supply Well & Pump	1	EACH	\$2,826
92-2019-804	AgWRAP	Water Supply Well & Pump	1	EACH	\$12,375
92-2019-805	AgWRAP	Agriculture Pond Repair/Retrofit	1	EACH	\$25,000
92-2019-806	AgWRAP	Water Supply Well & Pump	1	EACH	\$12,625
County : 93-WARREN					
93-2019-001	ACSP	Sod-Based Rotation - 5 Year SBR (41 months)	12.8	ACRE	\$1,280
93-2019-002	ACSP	Sod-Based Rotation - 5 Year SBR (41 months)	3.5	ACRE	\$350
93-2019-003	ACSP	Sod-Based Rotation - 5 Year SBR (41 months)	13.05	ACRE	\$1,305
93-2019-004	ACSP	Cover Crops	24.3	ACRE	\$972
93-2019-005	ACSP	Sod-Based Rotation - 4 Year SBR (29 months)	17.4	ACRE	\$2,041
93-2019-006	ACSP	Field Border	1.1	ACRE	\$2,973
		Grassed Waterway	0.5	ACRE	\$1,502
93-2019-007	ACSP	Field Border	2.5	ACRE	\$6,753
		Grassed Waterway	0.7	ACRE	\$2,103
93-2019-008	ACSP	Field Border	1.6	ACRE	\$3,584
		Grassed Waterway	0.9	ACRE	\$2,700
		Diversion	800	LinFT	\$766
93-2019-009	ACSP	Heavy Use Area Protection	1	EACH	\$4,686
93-2019-010	ACSP	Sod-Based Rotation - 5 Year SBR (41 months)	10.9	ACRE	\$1,909
93-2019-011	ACSP	Pasture Renovation	35.2	ACRE	\$10,560
93-2019-013	ACSP	Cover Crops	99.7	ACRE	\$3,988
93-2019-014	ACSP	Sod-Based Rotation - 5 Year SBR (41 months)	36	ACRE	\$6,300
County : 94-WASHINGTON					
94-2019-001	ACSP	Land Smoothing	40	ACRE	\$7,500
94-2019-002	ACSP	Nutrient Scavenger Crop	250	ACRE	\$5,000
94-2019-003	ACSP	Land Smoothing	40	ACRE	\$7,500
94-2019-004	ACSP	Land Smoothing	26.56	ACRE	\$4,980
94-2019-005	ACSP	Land Smoothing	34.81	ACRE	\$6,527
94-2019-006	ACSP	Conservation Cover	10	ACRE	\$1,966
94-2019-007	ACSP	Conservation Cover	24.47	ACRE	\$5,729

Appendix C

Contract Number	Program	Best Management Practice	Planned	Unit	Cost
94-2019-008	ACSP	Conservation Cover	2.15	ACRE	\$309
94-2019-009	ACSP	Cover Crops	131.5	ACRE	\$5,260
County : 95-WATAUGA					
95-2019-002	ACSP	Agricultural Road Repair/Stabilization	280	LinFT	\$1,449
		Heavy Use Area Protection	2	EACH	\$3,401
		Livestock Exclusion Fencing	950	LinFT	\$1,973
		Watering Tanks (Troughs)	4	EACH	\$8,971
95-2019-003	ACSP	Agricultural Road Repair/Stabilization	550	LinFT	\$7,162
		Heavy Use Area Protection	1	EACH	\$6,055
95-2019-004	ACSP	Stream Crossing	1	UNITS	\$6,493
		Watering Tanks (Troughs)	1	EACH	\$5,362
		Stream Protection Well	1	EACH	\$1,628
95-2019-005	ACSP	Heavy Use Area Protection	1	EACH	\$6,623
		Livestock Exclusion Fencing	4100	LinFT	\$8,057
		Watering Tanks (Troughs)	5	EACH	\$10,032
95-2019-006	ACSP	Agricultural Road Repair/Stabilization	1	LinFT	\$100
		Livestock Exclusion Fencing	189.5	LinFT	\$460
		Livestock Feeding Area	1	EACH	\$8,250
		Watering Tanks (Troughs)	1	EACH	\$1,877
95-2019-007	ACSP	Agricultural Road Repair/Stabilization	120	LinFT	\$12,498
		Rooftop Runoff Management System	342.5	EACH	\$1,119
		Livestock Exclusion Fencing	755	LinFT	\$1,518
		Livestock Feeding Area	2	EACH	\$8,277
		Watering Tanks (Troughs)	4	EACH	\$14,291
95-2019-501	CCAP	Grassed Swale	356	SqFt	\$7,546
95-2019-801	AgWRAP	Water Supply Well & Pump	1	EACH	\$7,500
County : 96-WAYNE					
96-2019-001	ACSP	Cropland Conversion - Grass	26.1	ACRE	\$7,033
96-2019-002	ACSP	Three Year Conservation Tillage for Grain and Cotton	70.87	ACRE	\$4,252
96-2019-003	ACSP	Precision Agrichemical Application	1	EACH	\$1,800
96-2019-004	ACSP	Waste Application Systems - Mobile Application System	1	EACH	\$12,500
96-2019-005	ACSP	Cover Crops	220.02	ACRE	\$0
96-2019-006	ACSP	Precision Agrichemical Application	1	EACH	\$2,400
96-2019-007	ACSP	Cover Crops	332	ACRE	\$10,000
96-2019-008	ACSP	Waste Application Systems - Mobile Application System	1	EACH	\$12,500
96-2019-009	ACSP	Waste Application Systems - Mobile Application System	1	EACH	\$7,500
96-2019-010	ACSP	Three Year Conservation Tillage for Grain and Cotton	70.9	ACRE	\$4,254
96-2019-701	ACSP	Disaster Pasture Renovation	15.04	ACRE	\$4,061
96-2019-702	ACSP	Disaster Lagoon Management Incentive	1215900	GALLONS	\$12,159
96-2019-703	ACSP	Non-Field Farm Road Repair	1	EACH	\$4,220
96-2019-704	ACSP	Non-Field Farm Road Repair	1	EACH	\$8,585
96-2019-705	ACSP	Non-Field Farm Road Repair	1	EACH	\$9,594
96-2019-706	ACSP	Non-Field Farm Road Repair	1	EACH	\$5,190
96-2019-707	ACSP	Non-Field Farm Road Repair	1	EACH	\$7,500
96-2019-708	ACSP	Non-Field Farm Road Repair	1	EACH	\$0
96-2019-709	ACSP	Non-Field Farm Road Repair	1	EACH	\$7,500
96-2019-710	ACSP	Non-Field Farm Road Repair	2	EACH	\$3,915

Appendix C

Contract Number	Program	Best Management Practice	Planned	Unit	Cost
96-2019-711	ACSP	Non-Field Farm Road Repair	1	EACH	\$7,500
96-2019-712	ACSP	Disaster Pasture Renovation	86.22	ACRE	\$16,687
96-2019-713	ACSP	Disaster Pasture Renovation	9.07	ACRE	\$2,041
96-2019-714	ACSP	Disaster Winter Forage Crop Incentive	41.22	ACRE	\$824
96-2019-715	ACSP	Disaster Lagoon Management Incentive	3704400.6	GALLONS	\$37,044
96-2019-716	ACSP	Disaster Lagoon Management Incentive	1064700	GALLONS	\$10,647
96-2019-717	ACSP	Disaster Lagoon Management Incentive	2028600	GALLONS	\$20,286
96-2019-718	ACSP	Disaster Lagoon Management Incentive	2280600	GALLONS	\$22,806
96-2019-719	ACSP	Disaster Pasture Renovation	53.36	ACRE	\$14,392
96-2019-720	ACSP	Disaster Lagoon Management Incentive	1.581E+09	GALLONS	\$15,813
96-2019-721	ACSP	Disaster Lagoon Management Incentive	302400	GALLONS	\$3,024
96-2019-722	ACSP	Disaster Lagoon Management Incentive	2025000	GALLONS	\$10,125
96-2019-723	ACSP	Grade Stabilization Structure	1	EACH	\$30,000
96-2019-724	ACSP	Disaster Lagoon Management Incentive	1902600	GALLONS	\$19,026
96-2019-725	ACSP	Disaster Lagoon Management Incentive	1014300	GALLONS	\$10,143
96-2019-726	ACSP	Non-Field Farm Road Repair	1	EACH	\$7,500
96-2019-727	ACSP	Non-Field Farm Road Repair	1	EACH	\$5,223
96-2019-728	ACSP	Disaster Lagoon Management Incentive	814200	GALLONS	\$4,071
96-2019-729	ACSP	Disaster Agricultural Pond Repair/Retrofit	1	JOB	\$0
96-2019-731	ACSP	Disaster Agricultural Pond Repair/Retrofit	1	JOB	\$0
96-2019-732	ACSP	Non-Field Farm Road Repair	1	EACH	\$3,397
96-2019-733	ACSP	Non-Field Farm Road Repair	2	EACH	\$5,718
96-2019-734	ACSP	Non-Field Farm Road Repair	1	EACH	\$3,408
96-2019-735	ACSP	Non-Field Farm Road Repair	1	EACH	\$7,500
96-2019-736	ACSP	Non-Field Farm Road Repair	1	EACH	\$12,748
96-2019-737	ACSP	Non-Field Farm Road Repair	1	EACH	\$9,278
96-2019-738	ACSP	Non-Field Farm Road Repair	1	EACH	\$1,469
96-2019-739	ACSP	Non-Field Farm Road Repair	1	EACH	\$2,750
96-2019-740	ACSP	Non-Field Farm Road Repair	1	EACH	\$31,161
96-2019-741	ACSP	Non-Field Farm Road Repair	1	EACH	\$8,758
96-2019-742	ACSP	Non-Field Farm Road Repair	1	EACH	\$33,337
96-2019-743	ACSP	Disaster Lagoon Management Incentive	1360800	GALLONS	\$13,608
96-2019-744	ACSP	Non-Field Farm Road Repair	1	EACH	\$0
96-2019-745	ACSP	Non-Field Farm Road Repair	1	EACH	\$0
96-2019-746	ACSP	Non-Field Farm Road Repair	1	EACH	\$0
96-2019-747	ACSP	Disaster Agricultural Pond Repair/Retrofit	1	JOB	\$0
96-2019-748	ACSP	Non-Field Farm Road Repair	1	EACH	\$0
96-2019-749	ACSP	Non-Field Farm Road Repair	1	EACH	\$0
96-2019-750	ACSP	Non-Field Farm Road Repair	1	EACH	\$0
96-2019-751	ACSP	Non-Field Farm Road Repair	1	EACH	\$0
96-2019-752	ACSP	Non-Field Farm Road Repair	1	EACH	\$0
96-2019-753	ACSP	Non-Field Farm Road Repair	1	EACH	\$0
96-2019-754	ACSP	Grade Stabilization Structure	1	EACH	\$25,836

Appendix C

Contract Number	Program	Best Management Practice	Planned	Unit	Cost
96-2019-755	ACSP	Disaster Lagoon Management Incentive	16632	GALLONS	\$16,632
96-2019-756	ACSP	Disaster Lagoon Management Incentive	12300	GALLONS	\$12,300
96-2019-757	ACSP	Non-Field Farm Road Repair	5	EACH	\$9,508
County : 97-WILKES					
97-2019-001	ACSP	Livestock Mortality Management System - Composter	38.1	EACH	\$32,729
97-2019-002	ACSP	Heavy Use Area Protection	1	EACH	\$6,774
		Livestock Exclusion Fencing	4013	LinFT	\$17,227
		Watering Tanks (Troughs)	1	EACH	\$1,344
		Stream Protection Well	1	EACH	\$2,098
97-2019-801	AgWRAP	Water Supply Well & Pump	1	EACH	\$7,500
97-2019-802	AgWRAP	Water Supply Well & Pump	1	EACH	\$10,763
97-2019-803	AgWRAP	Water Supply Well & Pump	1	EACH	\$11,363
County : 98-WILSON					
98-2019-001	ACSP	Grassed Waterway	0.9	ACRE	\$3,605
98-2019-002	ACSP	Grassed Waterway	0.4	ACRE	\$1,264
98-2019-003	ACSP	Grassed Waterway	0.3	ACRE	\$1,235
98-2019-004	ACSP	Grassed Waterway	1.7	ACRE	\$7,300
98-2019-006	ACSP	Grassed Waterway	0.2	ACRE	\$626
98-2019-007	ACSP	Grassed Waterway	0.5	ACRE	\$1,702
98-2019-008	ACSP	Lagoon Biosolids Removal Incentive	170000	GALLONS	\$15,000
98-2019-009	ACSP	Cropland Conversion - Grass	18.3	ACRE	\$4,118
98-2019-400	ACSP	Non-Field Farm Road Repair	1	EACH	\$6,500
98-2019-401	ACSP	Non-Field Farm Road Repair	1	EACH	\$6,500
98-2019-801	AgWRAP	Ag Water Collection System	1	EACH	\$5,000
98-2019-802	AgWRAP	Agricultural Water Supply/Reuse Pond	1	EACH	\$2,500
County : 99-YADKIN					
99-2019-001	ACSP	Waste Application Systems - Mobile Application System	1	EACH	\$5,897
99-2019-002	ACSP	Waste Application Systems - Mobile Application System	1	EACH	\$10,500
99-2019-003	ACSP	Waste Application Systems - Mobile Application System	1	EACH	\$10,500
99-2019-004	ACSP	Waste Application Systems - Mobile Application System	1	EACH	\$10,500
99-2019-005	ACSP	Heavy Use Area Protection	2	EACH	\$1,948
		Livestock Exclusion Fencing	1770	LinFT	\$1,885
		Watering Tanks (Troughs)	2	EACH	\$1,617
99-2019-006	ACSP	Rooftop Runoff Management System	125	EACH	\$2,880
99-2019-007	ACSP	Rooftop Runoff Management System	476.7	EACH	\$0
99-2019-801	AgWRAP	Water Supply Well & Pump	1	EACH	\$5,466