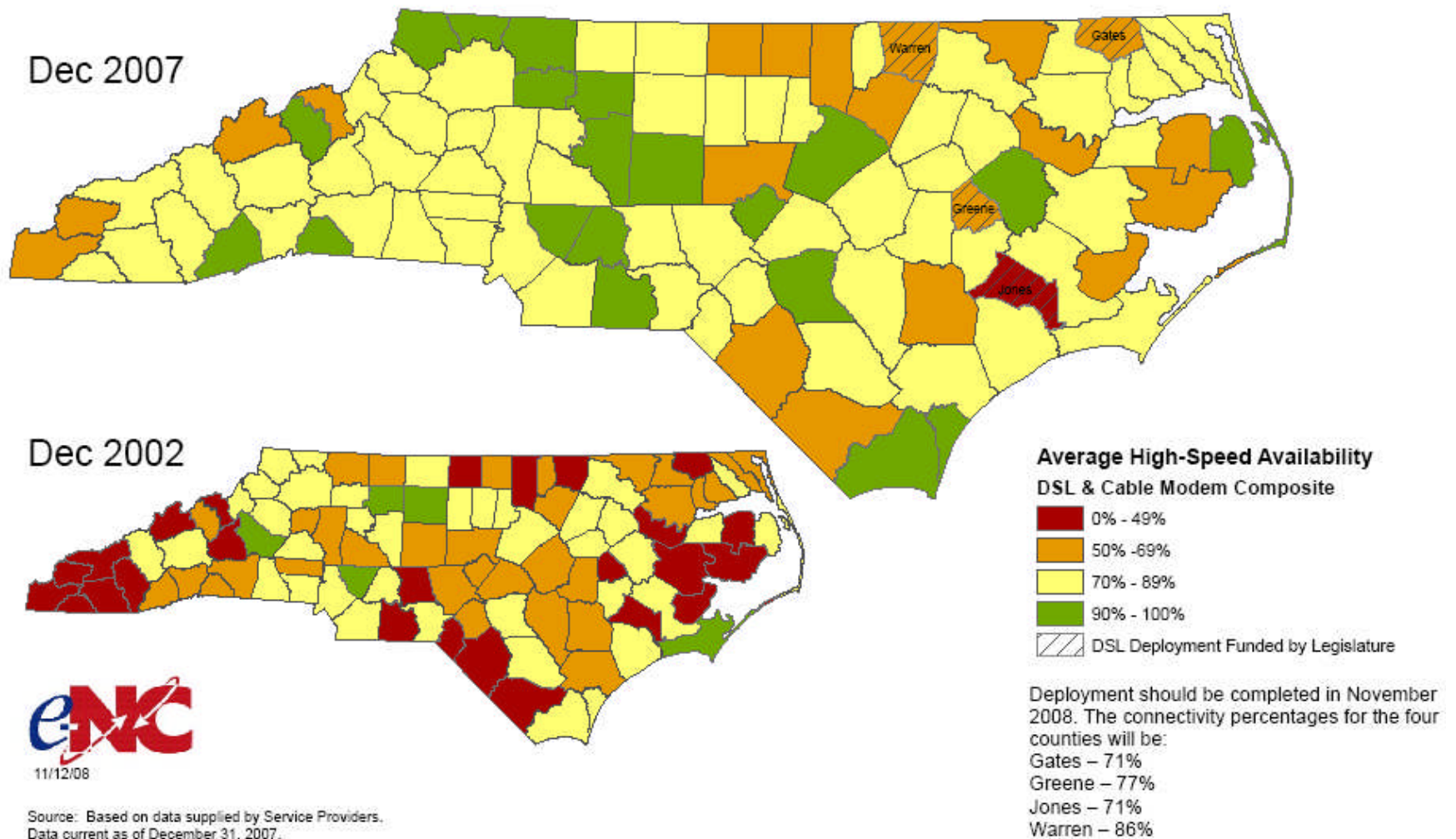




The e-NC Authority
November 14, 2008

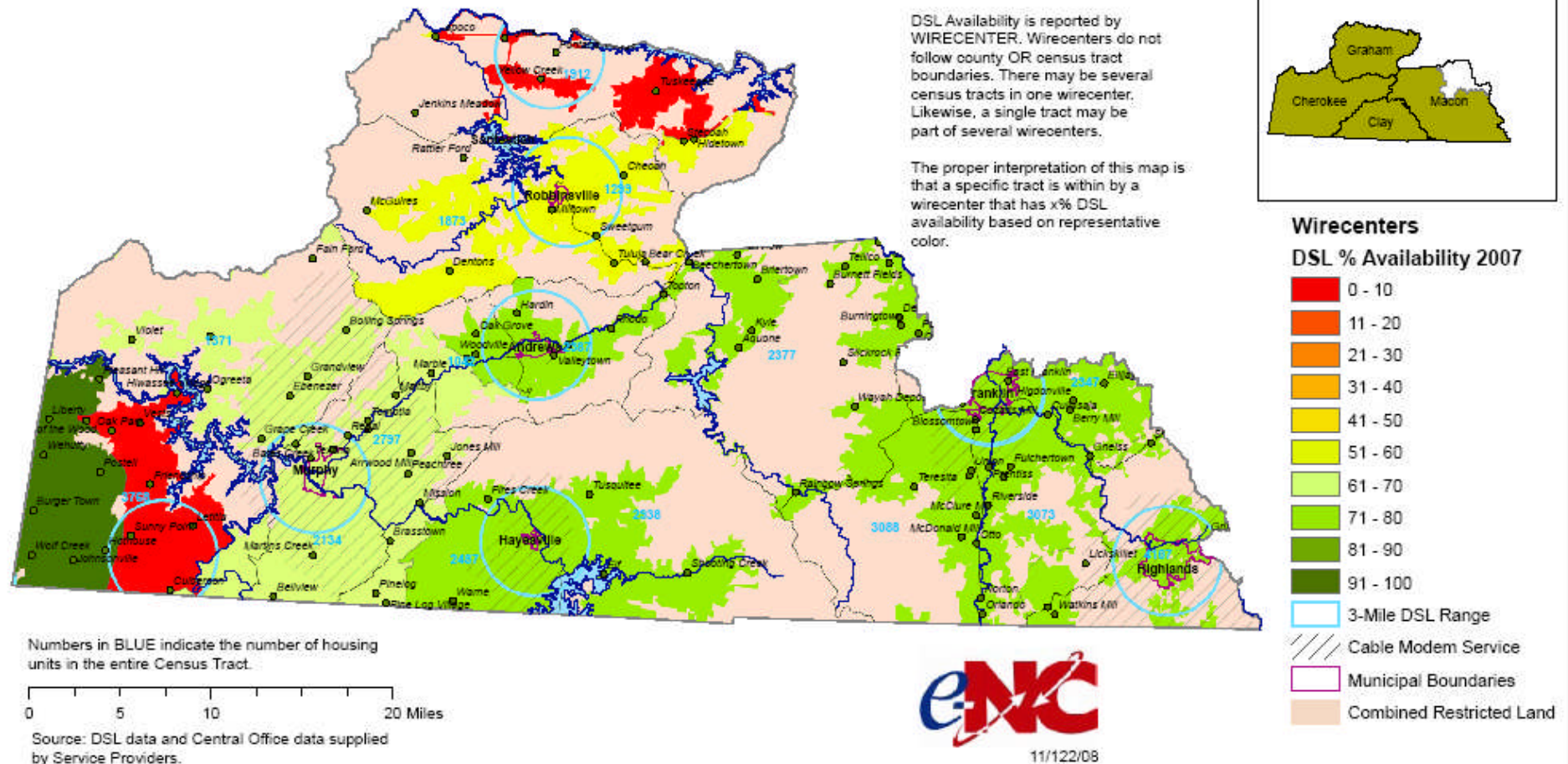
Jane Smith Patterson
Executive Director
www.e-nc.org

Progression of Counties Toward 100% High-Speed Availability



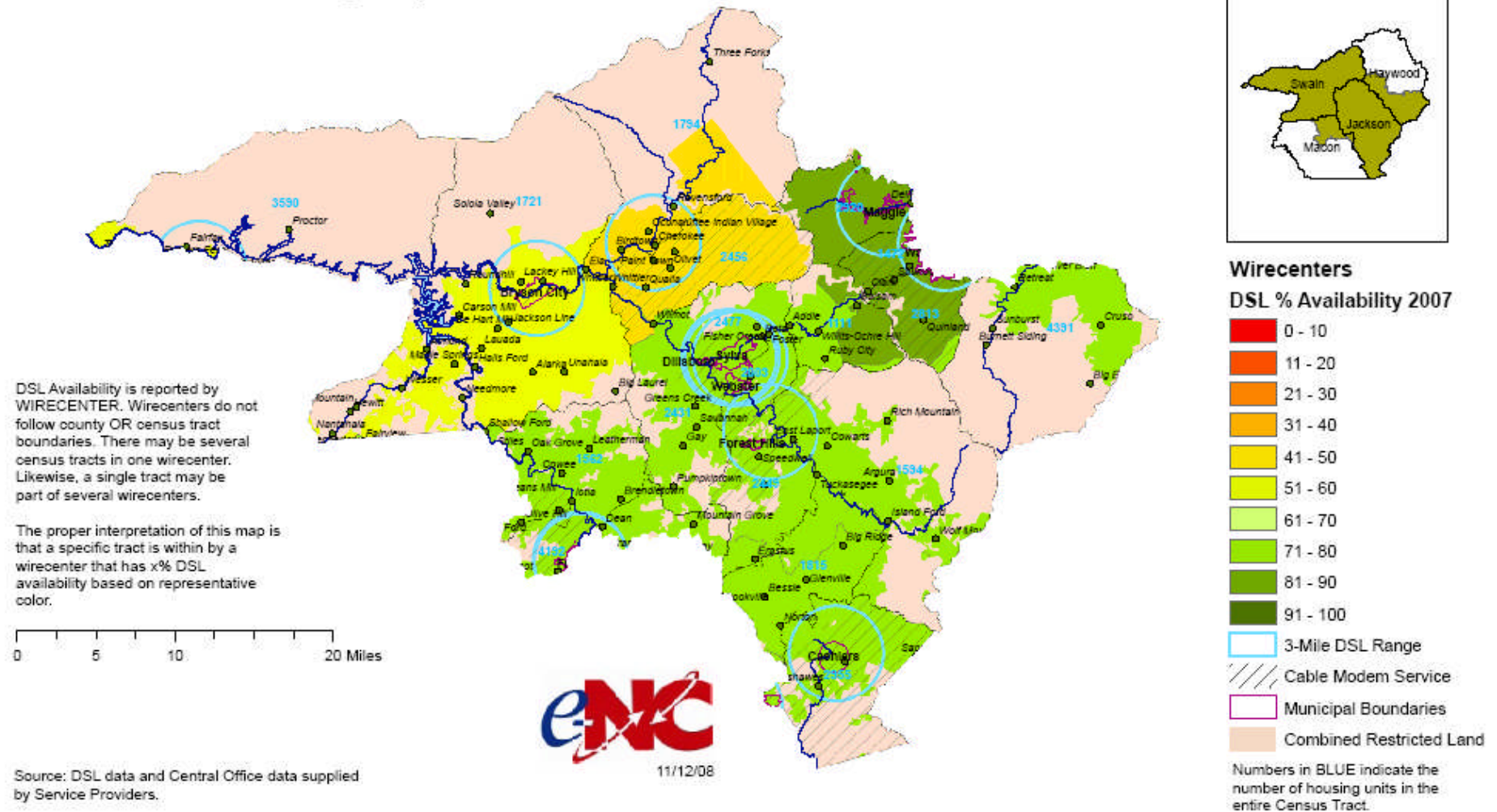
District 120: Western North Carolina

District 120: Cherokee, Clay, Graham and Macon Counties High Speed Internet Focus on Census Tracts



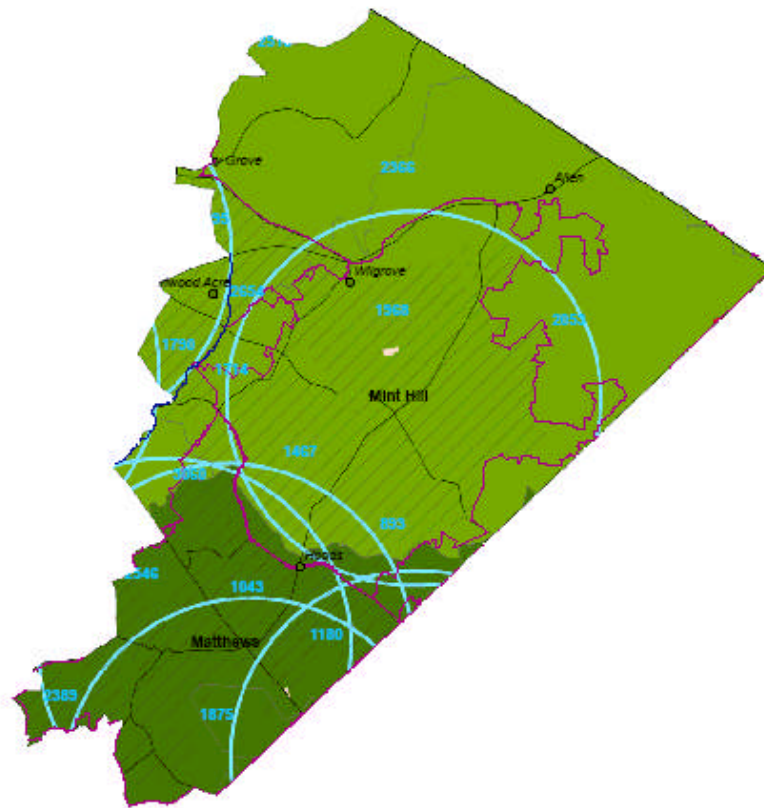
District 119: Western North Carolina

District 119: Haywood, Jackson, Macon and Swain Counties High Speed Internet Focus on Census Tracts



District 103: Mecklenburg County

District 103: Mecklenburg County High Speed Internet Focus on Census Tracts



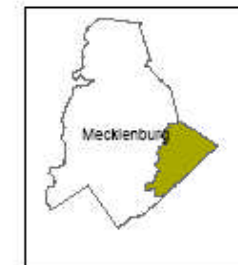
DSL Availability is reported by WIRECENTER. Wirecenters do not follow county OR census tract boundaries. There may be several census tracts in one wirecenter. Likewise, a single tract may be part of several wirecenters.

The proper interpretation of this map is that a specific tract is within by a wirecenter that has x% DSL availability based on representative color.



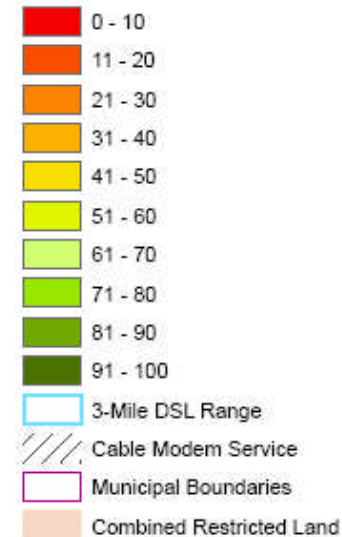
11/12/08

Source: DSL data and Central Office data supplied by Service Providers.



Wirecenters

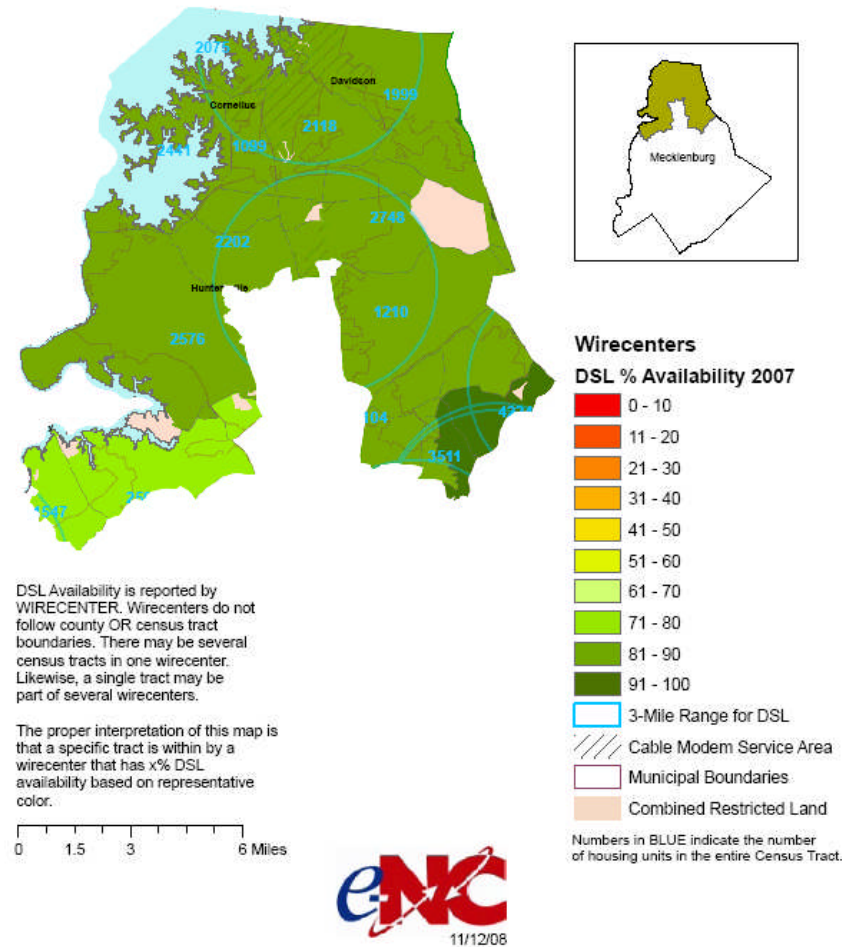
DSL % Availability 2007



Numbers in BLUE indicate the number of housing units in the entire Census Tract.

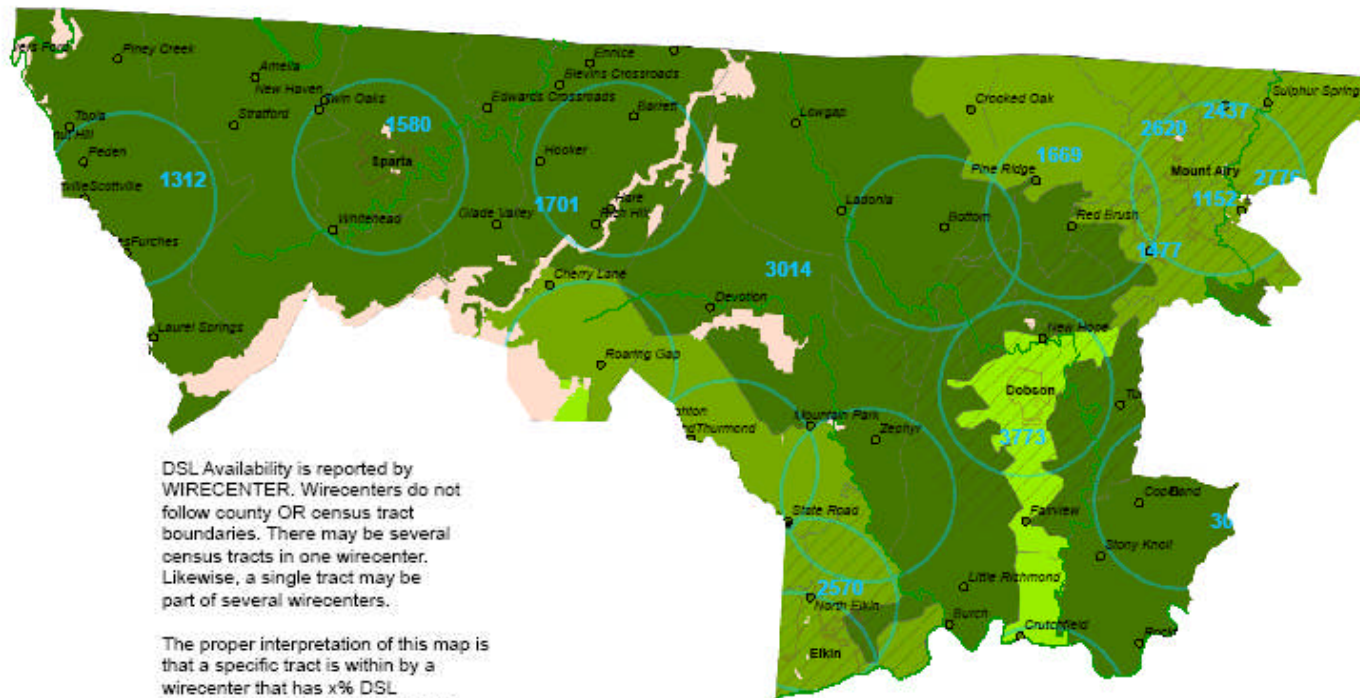
District 98: Mecklenburg County

District 98: Mecklenburg County High Speed Internet Focus on Census Tracts



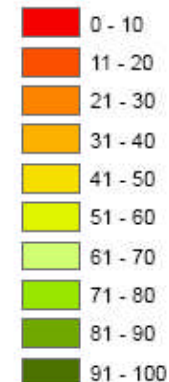
District 90: Western North Carolina

District 90: Alleghany and Surry Counties High Speed Internet Focus on Census Tracts



Wirecenters

DSL % Availability 2007



3-Mile Range for DSL

Cable Modem Service Area

Municipal Boundaries

Combined Restricted Land

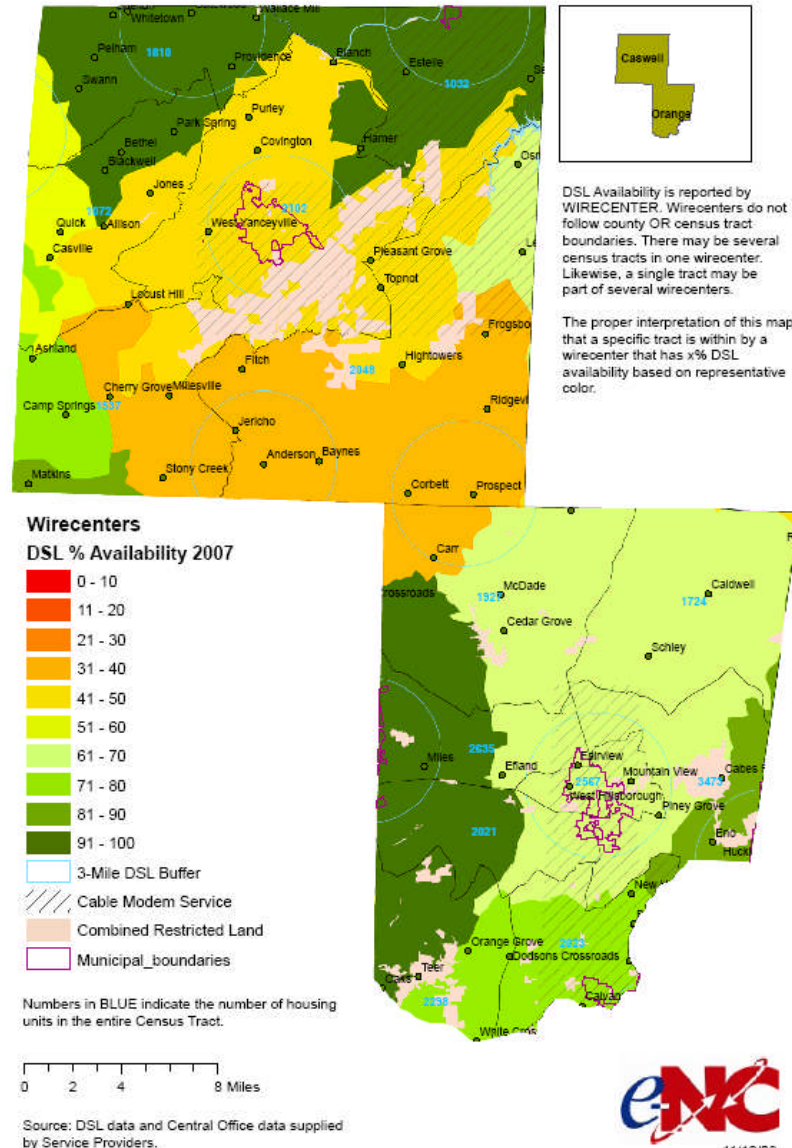
Numbers in BLUE indicate the number of housing units in the entire Census Tract.



11/12/08

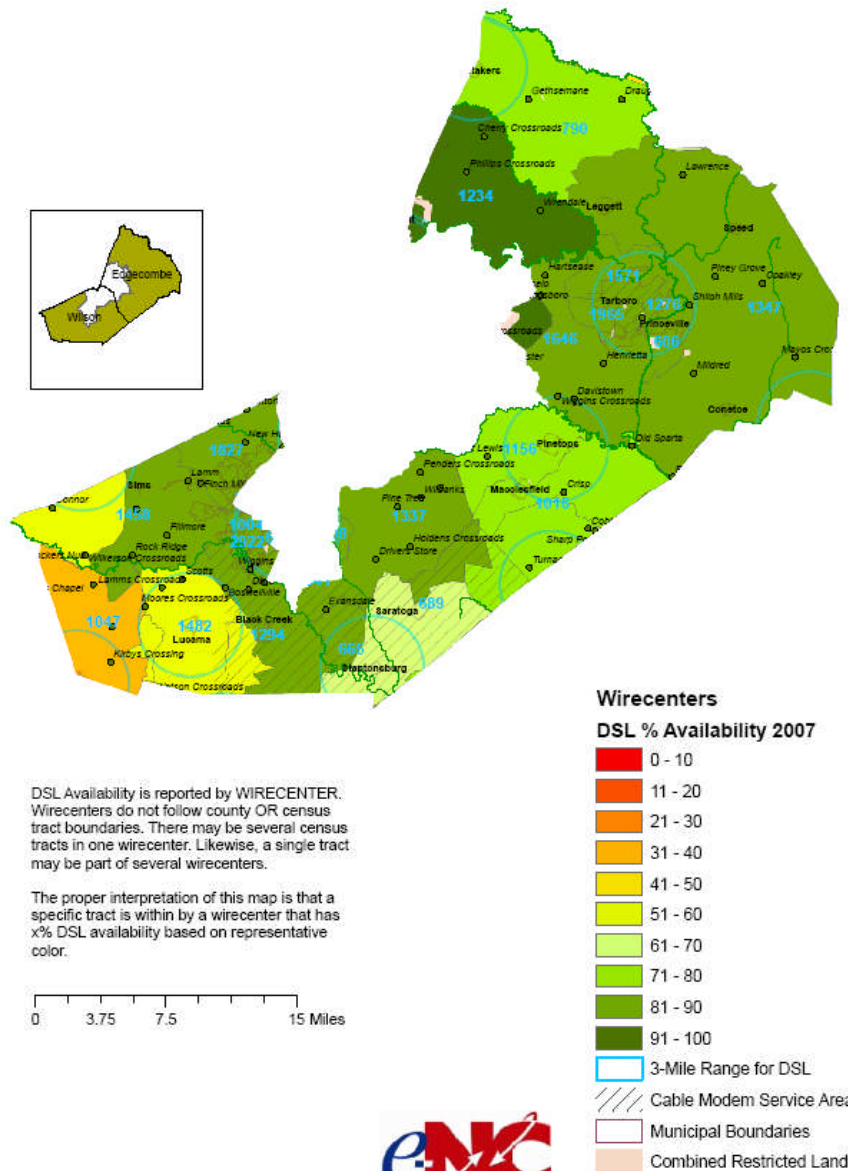
District 50: Central North Carolina

District 50: Caswell and Orange Counties High Speed Internet Focus on Census Tracts



District 23: Eastern North Carolina

District 23: Edgecombe and Wilson Counties High Speed Internet Focus on Census Tracts



DSL Availability is reported by WIRECENTER. Wirecenters do not follow county OR census tract boundaries. There may be several census tracts in one wirecenter. Likewise, a single tract may be part of several wirecenters.

The proper interpretation of this map is that a specific tract is within a wirecenter that has x% DSL availability based on representative color.

0 3.75 7.5 15 Miles

Source: DSL data and Central Office data supplied by Service Providers.

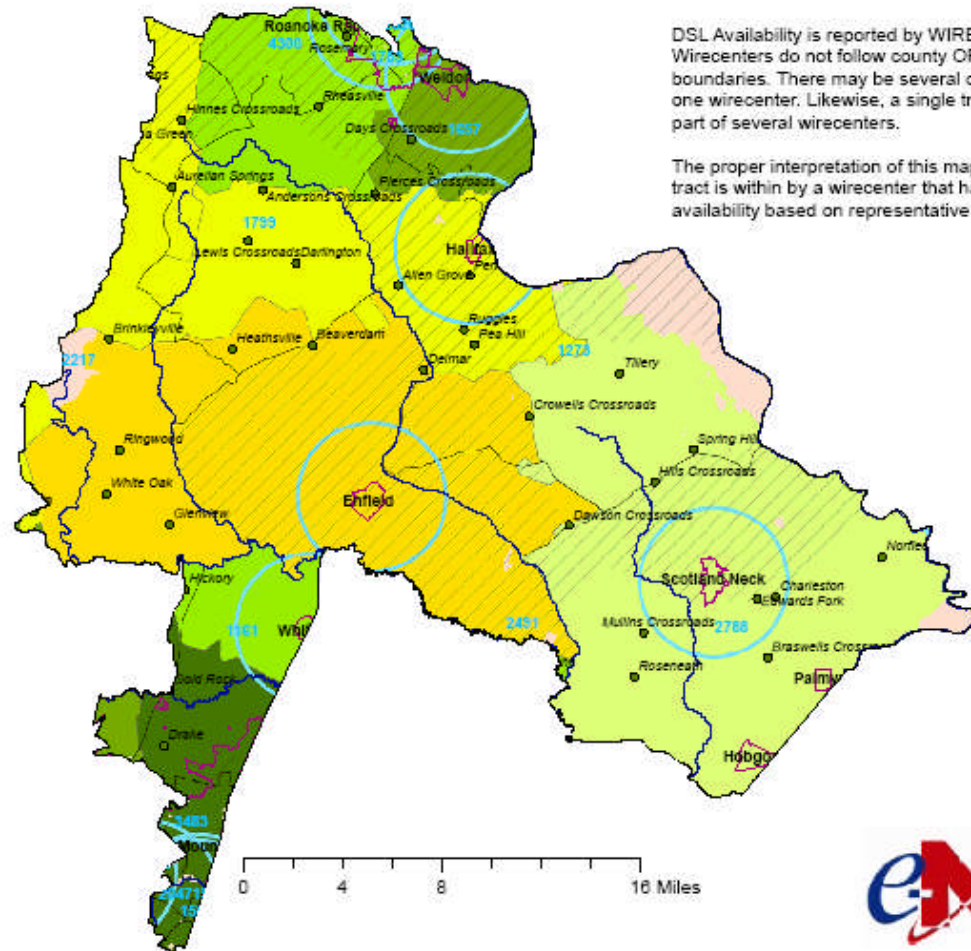


11/12/08

www.e-nc.org

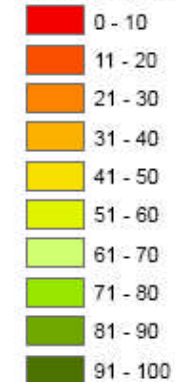
District 7: Eastern North Carolina

District 7: Halifax and Nash Counties High Speed Internet Focus on Census Tracts



Wirecenters

DSL % Availability 2007



3-Mile DSL Range

Cable Modem Service

Municipal Boundaries

Combined Restricted Land

Numbers in BLUE indicate the number of housing units in the entire Census Tract.

Source: DSL data and Central Office data supplied by Service Providers.



11/12/08

ToReach Us

**The e-NC Authority
4021 Carya Drive,
Raleigh NC 27610
919-250-4314
1-866-627-8725
www.e-nc.org**