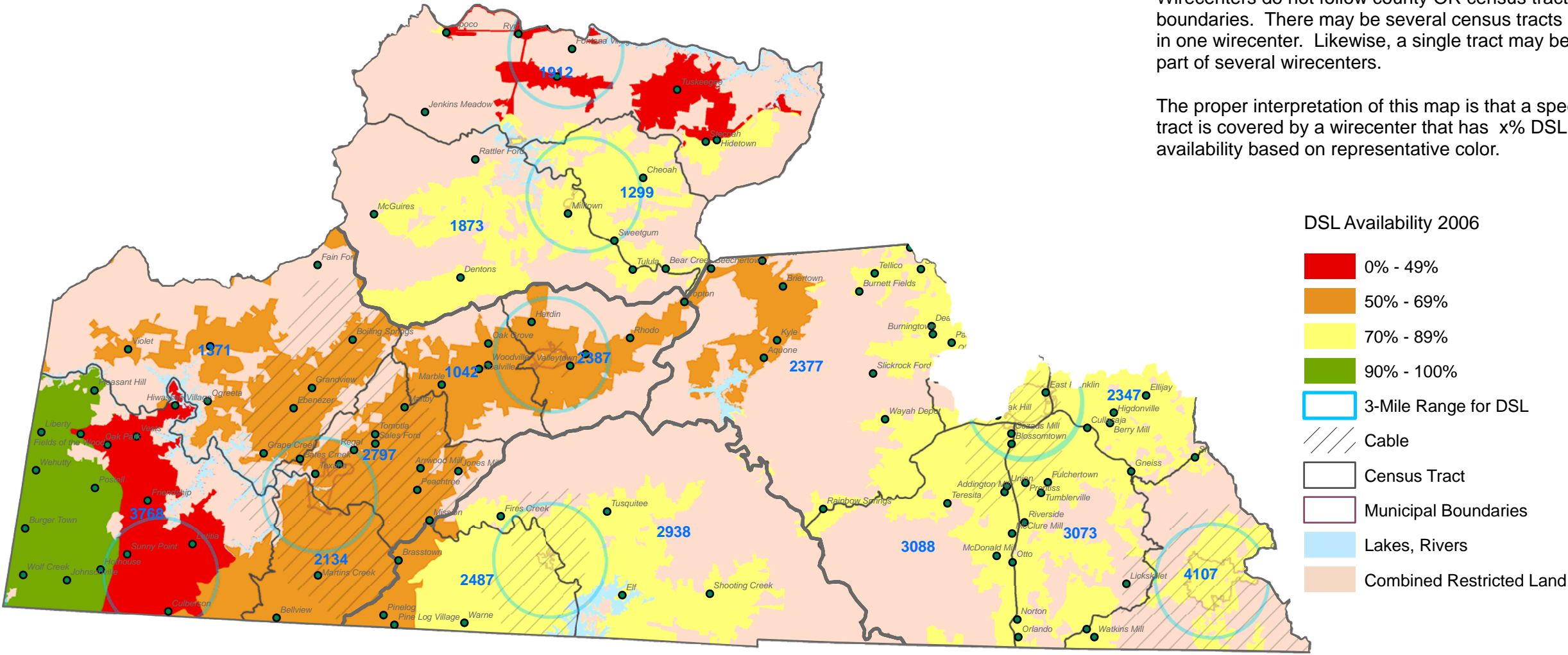


NC House District 120: Cherokee, Clay, Graham, Macon Counties

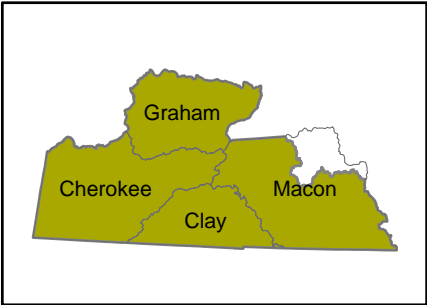
High Speed Internet in Census Tracts

DSL Availability is reported by WIRECENTER. Wirecenters do not follow county OR census tract boundaries. There may be several census tracts in one wirecenter. Likewise, a single tract may be part of several wirecenters.

The proper interpretation of this map is that a specific tract is covered by a wirecenter that has x% DSL availability based on representative color.



0 2.5 5 10 15 Miles



Numbers in BLUE indicate the number of housing units in the entire Census Tract.

Source: DSL data and Central Office data supplied by Service Providers. No data provided for remotes.