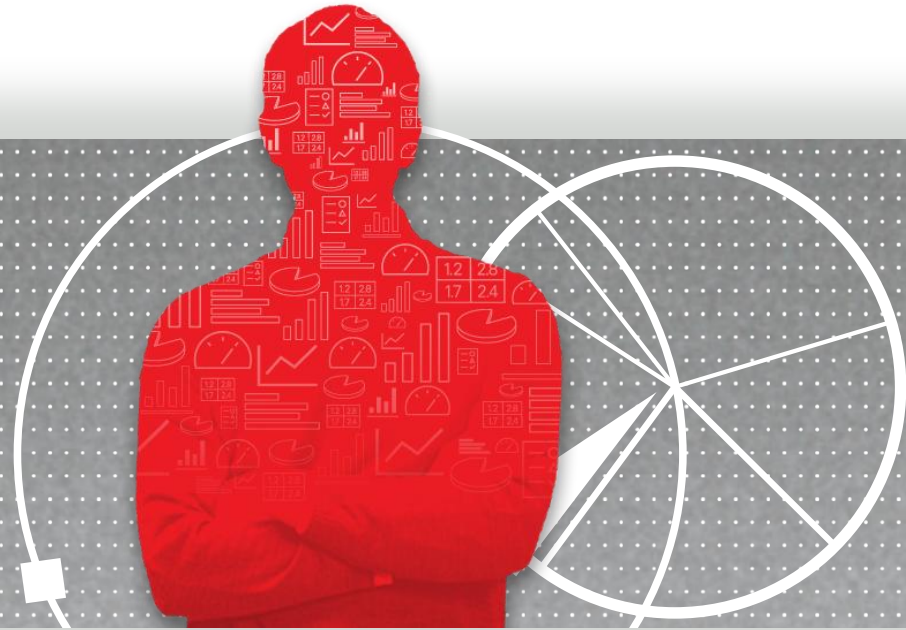


BETHE FIRST TO KNOW



ORACLE®

Decision Analytics

NC General Assembly

Randy Parrett, North Carolina Account Manager

John Gearhart, Executive Director – State & Local Government



Overview

- Oracle Overview
- Decision Analytics
 - How can analytics improve appropriations?
 - Identify potential areas to build solutions
 - How can the legislature access and use data?
 - Legislative Branch Analytics Center of Excellence
 - Case Studies
- Potential Areas to focus on
- Next Steps

Oracle Overview

- Founded in 1977 by Larry Ellison, Bob Miner & Ed Oates
- First customer was the CIA
- Corporate Headquarters – California
- Public Sector Headquarters – Reston
- 36B FY 2011 revenue
- 109,000 employee's
- A computer industry leader & innovator

Oracle in North Carolina

- 500+ North Carolina based employee's
- The Oracle Academy
 - 67 NC Educational Institutions involved
 - Thousands of students participate
- State Agency Customers
 - DPI – NC WISE, CEDARS
 - Dept. of Revenue – TIMS
 - DHHS – NC FAST, Reporting & Analytics
 - OSC, DOT, DOA, DENR, DOI and many more...

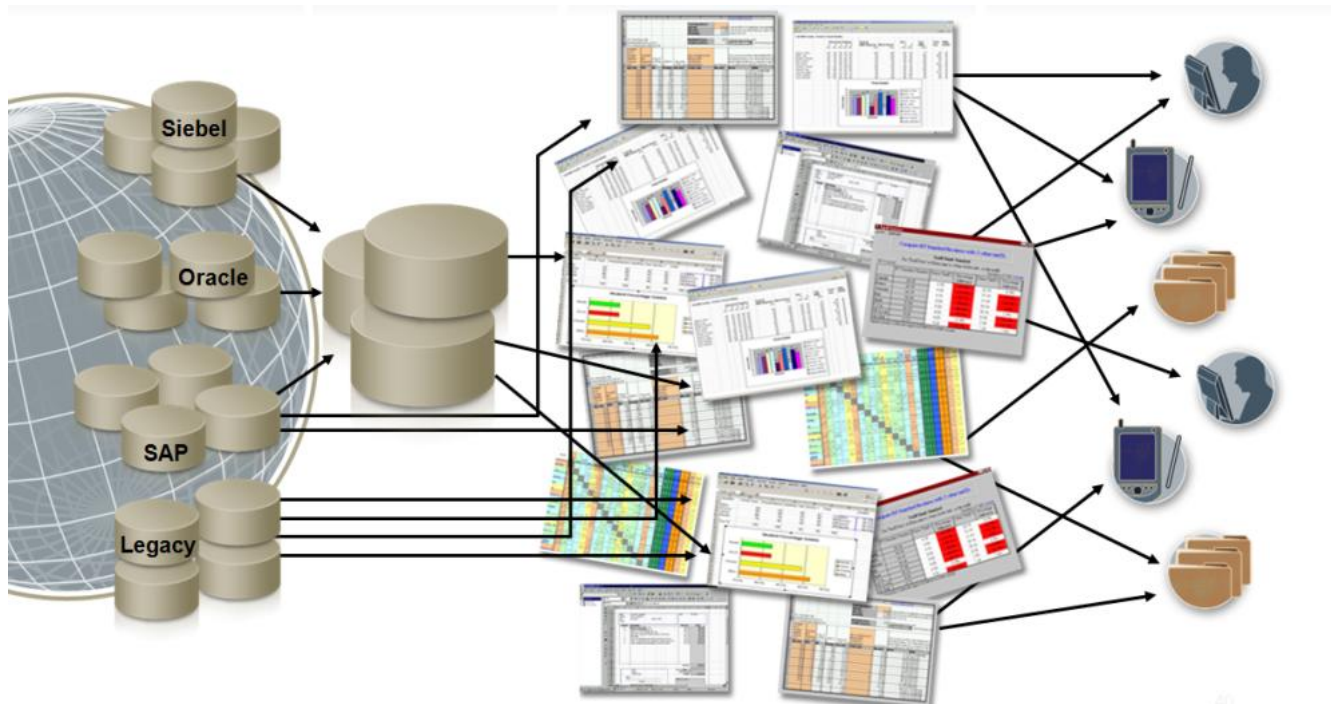
Content Chaos



"Looks like you've got all the data—what's the holdup?"

Cartoon by Davis Harbaugh, HBR January 2006

Content Chaos

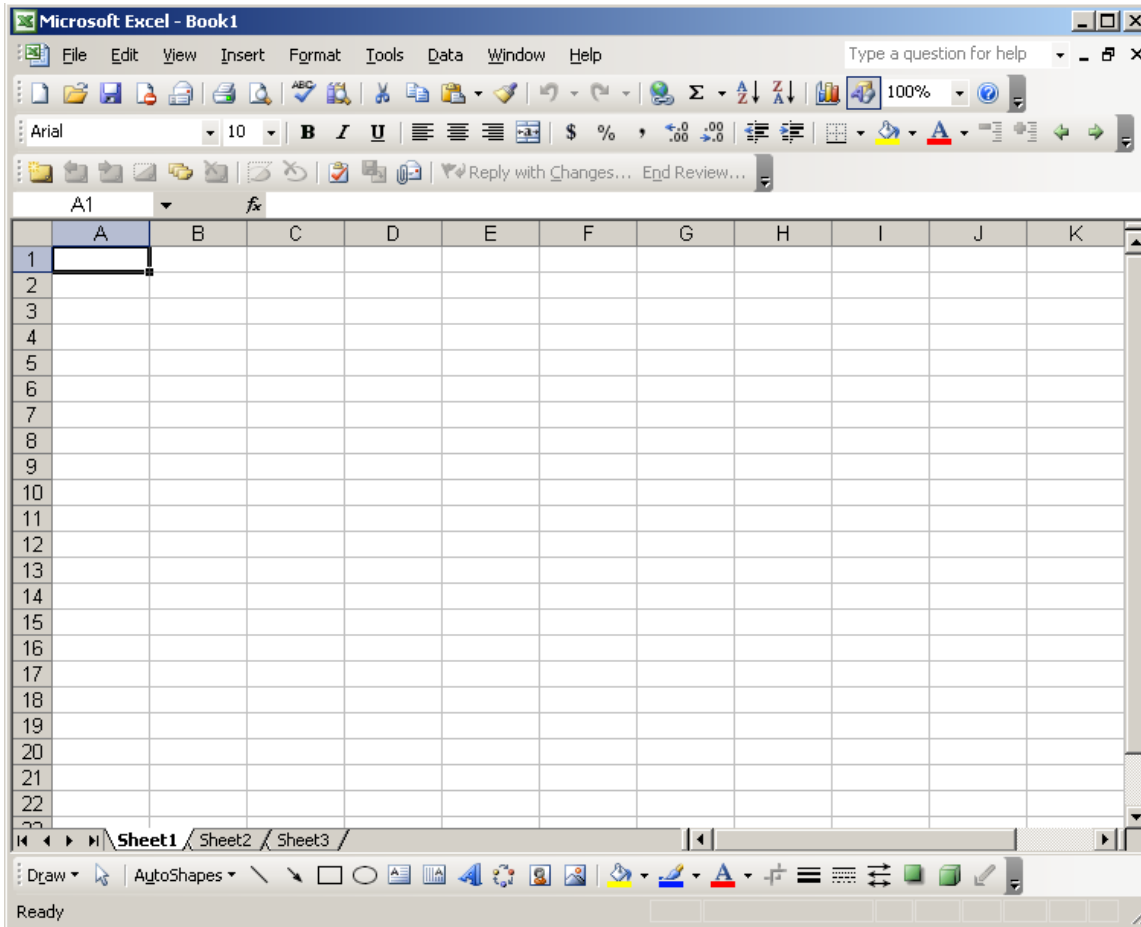


- Multiple “systems of record” in Excel and Access
- Proliferation of “spreadmarts”
- Paper-based forms

The Problem: Proliferation of “Spreadmarts”

Most Modeling is Done Here!

It is the best-known tool, but...



- **Disconnected**
- **Data Security Risks**
- **2-Dimensional**
- **Error-prone**
- **Doesn't scale**
- **No controls / audit trails**

“Spreadsheet Hell”

Content Consistency

What You Need to Achieve It

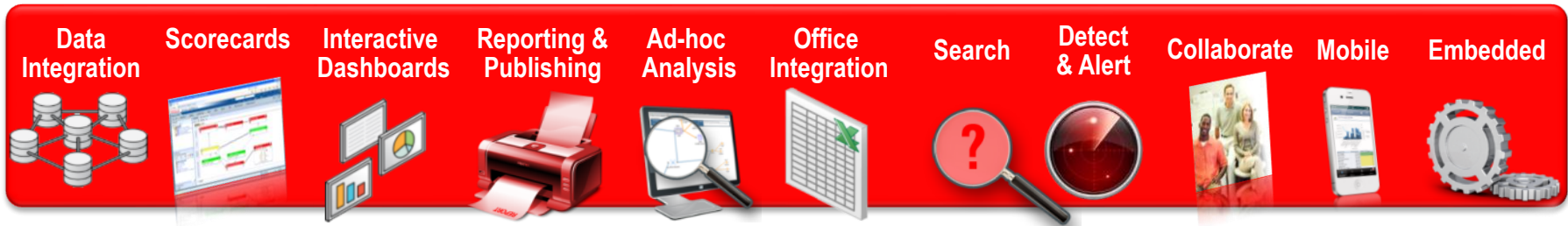
- Ability to access multiple “systems of record” in place
- Consistent view of the truth
- Effective distribution
- Common security model
- Facilitate automated processes



Enterprise Analytics/Business Intelligence Platform

Unified Platform. Multiple Data Sources. Multiple Delivery Channels.

Delivery Channels



Federated Query Engine

Enterprise BI Server

Common Enterprise Information Model

- Common Metadata Foundation across all Data Sources
- Common Security, Access Control, Authorization, Auditing
- Common Request Generation and Optimized Data Access Services
- Common Clustering, Workload Management, & Deployment
- Common Systems & Operational Lifecycle Management



Data Sources



ORACLE®

Case Studies: Leveraging Effective Business Intelligence



North Carolina Dept of Public Instruction

Average Teacher Salary Analysis



**Calculating the Average Teacher Salary is a key component
In building the North Carolina public school budget**

Challenges

- Current average teacher salary analysis done on spreadsheets and paper
- Spreadsheets make it difficult to compare the year to year data to identify trends
- Lengthy, labor intensive process unable to respond quickly to changes
- The impact of the changes in the Average Teacher Salary on the total state public school budget

Business Intelligence Advantage

- Analysts and executives have the ability to quickly and easily see the impact of changes on the budget
- Users can analyze the information without constant reprogramming by information technology staff

North Carolina Dept of Public Instruction

Average Teacher Salary Analysis

Solution

- Pull data from multiple sources into a consistent and easy to use interface that allows users to see high level budget impacts AND be able to drill down into the details as needed
- Allows finance officers the ability to simulate many possible scenarios to see total budget impacts
- Allows users an easy way to do ad-hoc queries without information technology staff assistance
- Improves visibility into how the budgets are being utilized
- Empowers data driven decisions by the users due to better and easier to use information

State-Wide Teacher Salary Analysis

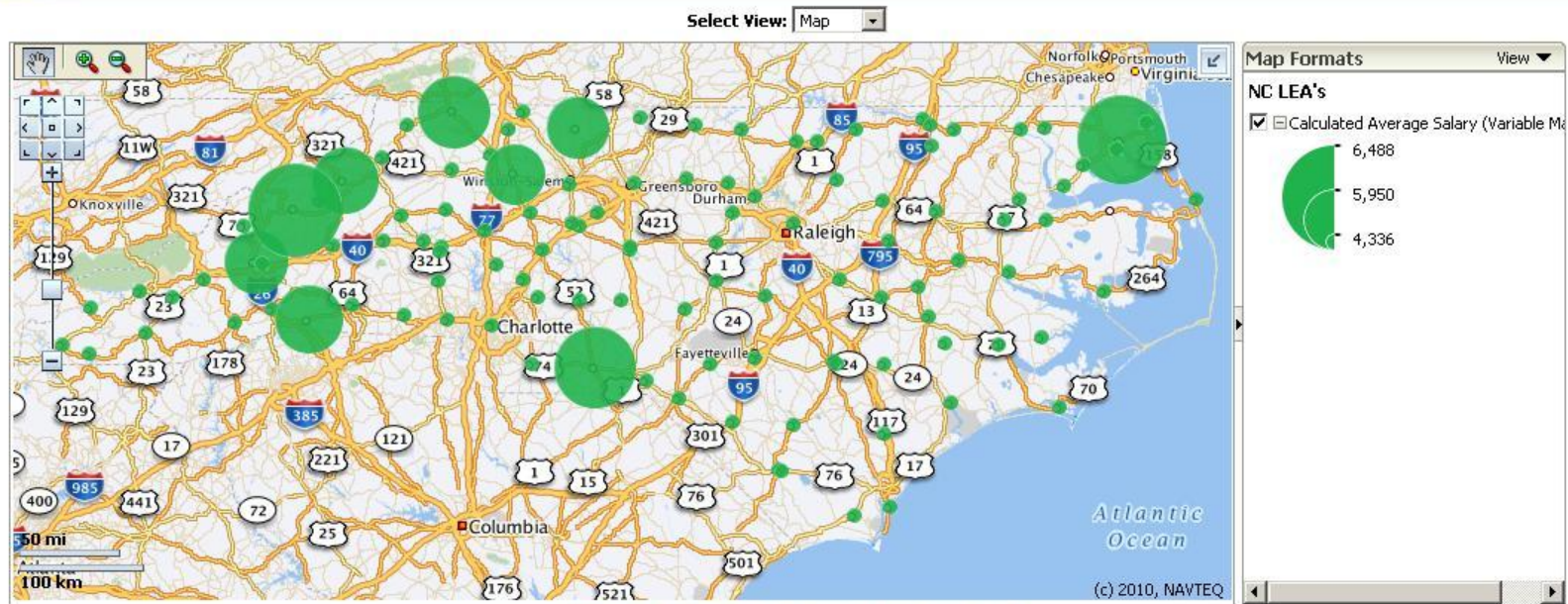
ORACLE Business Intelligence

Search All Advanced Administration Help Sign Out

Finance Home Catalog Dashboards New Open Signed In As **weblogic**

Average Teacher Salary Analysis of Year Analysis State vs Local State vs Local Paid Multi Year Counts FTE's Mapped Test

Average Salary by Unit



[Analyze](#) - [Edit](#) - [Refresh](#) - [Print](#) - [Export](#) - [Add to Briefing Book](#)

Working Report

Funding Source	Category Code	Category Name	Calculated Expected Salary	Total Certified Salary Amount	Total FTEs	Total FTEs Zero Sal	Total FTEs with Sal	Calculated Average Salary	Employee Ssn Count	Employee Ssn Distinct Count
Local	Local			107,251,077	24,645.91	1,074.79	23,571.12	4,550	28,196	25,402
State	1011	Classroom Teachers	2,618,111,098	261,811,110	60,438.63	773.62	59,665.00	4,388	62,775	61,467
	1042	Family Support Nurses	2,969,980	296,998	59.81		59.81	4,966	64	62
	1050	Principal	139,027,980	11,585,665	2,088.50	5.00	2,083.50	5,561	2,089	2,088
	1070	Instructional Support	360,769,616	36,076,962	6,386.58	144.25	6,242.34	5,779	7,685	6,550
	1131	Voc Ed Months of Emolvment	264,958,270	26,495,827	5,887.46	140.22	5,747.24	4,610	6,151	5,993

Virginia Dept of Motor Vehicles

Predictive Insight with Unified BI



Challenges – Content Consistency, Decision Speed & Unknown Unknowns:

- Switch from tracking vehicle tags and drivers license numbers to having a 360° view of Citizen lifecycle
- Out-dated reports based on month-old data
- No consistent visibility into volume at 80+ DMV Branch Offices
- Need to predict future staffing requirements to streamline wait-times and eliminate overtime at understaffed locations **without** new hires

BI Advantage:

- Role-based views on current status & predicted staffing requirements
- Native integration with eBusiness Suite, Siebel CRM & Oracle RDBMS

Solution – BI Platform, BI Apps, OLAP Cubes & Data Mining:

- Consistent, rapid access to information
- Ability to project future needs based on historical trends
- Factor-based What-If analysis to compare alternate scenarios

Staffing Optimization

Using Predictive Analytics to reach Service Targets



State of Oregon

Policy Impact Analysis



Challenges – Policy Complexity & Decision Speed:

- Need to analyze financial impact of proposed changes to EITC, SNAP, TANF and Child Welfare qualifications
- Need to support and analyze coming impact of HIX requirements

BI + Policy App Advantage:

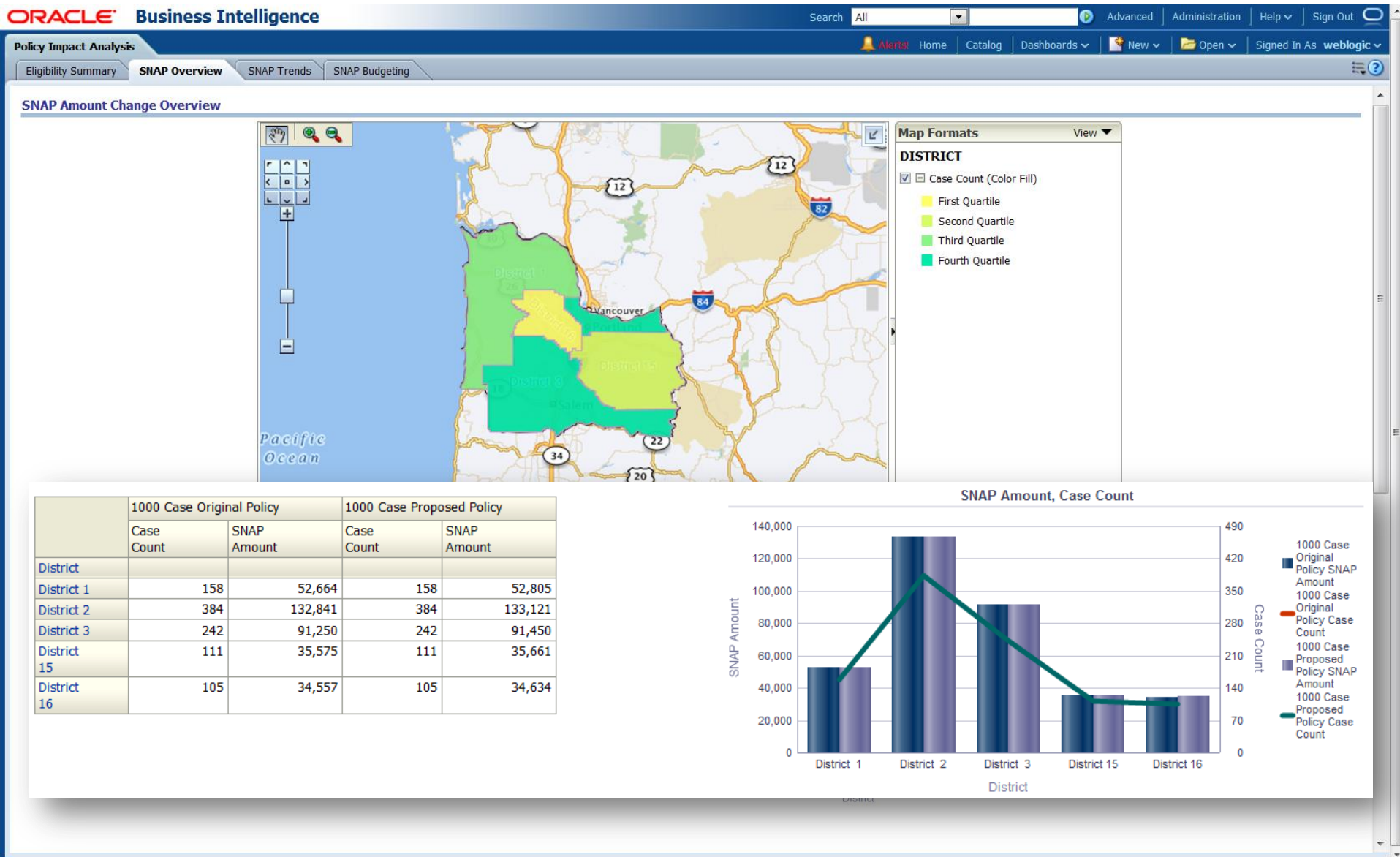
- Simple MS Word-like interface for entering policy
- Unified system provides easy conversion of policy text into analytical data
- Rapid comparison of competing proposals = effective funding decisions

Solution – BI Platform, Automated Policy Management Application, OLAP Cubes:

- Multiple policy scenarios auto-loaded into analytic cubes
- Easy visibility into policy impact via standard BI dashboards

Policy Impact Analysis

Measuring the Financial Impact of Policy Changes



NYC Uses Business Intelligence to Power 311 Customer Service Center



COMPANY OVERVIEW

- NYC local government responsible for sanitation, transportation, and roads
- Industry: Public Sector

CHALLENGES

- Institute 311 service to offload millions of non-emergency calls from 911
- Provide better customer service and higher citizen satisfaction by making government transparent to all citizens
- Ensure that City agencies are accountable for their performance
- New Federal requirements for rapid development of ARRA funding reports

SOLUTIONS

- Launched Citywide Performance Reporting (CPR) system based on Enterprise BI platform with performance dashboards, pre-built metrics, alerts & self-service analytics
- Able to leverage existing system to deploy ARRA reports in under 8 weeks.

CUSTOMER PERSPECTIVE

"When we introduced 311, we streamlined and centralized information for New Yorkers like never before, and now we're doing it again. CPR provides anyone - government officials, reporters and most importantly everyday New Yorkers, with a wealth of regularly updated information on City government."

Mayor Michael R. Bloomberg

RESULTS

- **Increase accountability by making it easier to monitor agency performance**
- **Flexibility to rapidly respond to changing Federal mandates**

ORACLE

Citizen Access

NYC.gov - Windows Internet Explorer

Search | Email Updates | Contact Us

Residents | Business | Visitors | Government | Office of the Mayor



CPR AGENCY PERFORMANCE REPORTING Mayor's Office of Operations

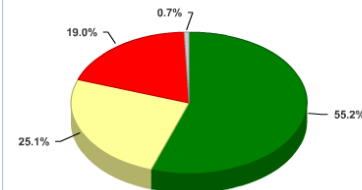
PRINTER FRIENDLY FORMAT

SET TEXT SIZE: A A A

Agency Performance Reports

- About
- Citywide Themes
- Performance Mapping Report
- Help
- Frequently Asked Questions
- Take CPR Survey
- Contact CPR
- NYCStat Home

Citywide Performance Report



Citywide Theme	Number of Indicators	% Improving or Stable	% Declining	% New or Data Not Available
Citywide Administration	57	56.1%	36.8%	1.8%
Community Services	119	40.3%	45.4%	0.0%
Economic Development and Business Affairs	50	46.0%	40.0%	0.0%
Education	49	51.0%	42.9%	0.0%
Infrastructure	85	47.1%	45.9%	0.0%
Legal Affairs	29	55.2%	31.0%	0.0%
Public Safety	61	50.8%	29.5%	1.6%
Social Services	116	50.9%	33.6%	0.9%

Comptroller

Done



Search | Email Updates | Contact Us

Residents | Business | Visitors | Government | Office of the Mayor

NYCStat Stimulus Tracker

TRANSLATE THIS PAGE | PRINTER FRIENDLY FORMAT

SET TEXT SIZE: A A A

Search

Home

About

Funding Summary

Funding Details

- Infrastructure
- Energy Efficiency
- Economic & Workforce Development
- Health & Social Support
- Education
- Public Safety
- Neighborhood Stabilization
- Medicaid Relief

Additional Reports

Map

Resources

News and Information

Stimulus at Work

Honors and Awards

Help

Contact NYCStat

NYCStat Home

Visit our Tumblr Page

Funding Category: Infrastructure

Description:

Funding to spur the region's construction industry and create jobs, while meeting critical needs in areas like highways, mass transit, efficient energy use, public housing, and water supply.

Funding by Subcategory

Funds allocated to NYC to date. Zero means no funds allocated yet.



Stimulus Funding by Subcategory, Award Name & Project/Program

☐ Not Started
 ☒ Less than 50% Completed
 ☐ Completed 50% or More
 ☐ Fully Complete

Subcategory	Award Name	Project/Program	Stimulus Funding (\$ millions)	Status
Transportation	Ferry Boat Discretionary (FBD) Program	Staten Island Ferry Maintenance Facility-Pier Reconstruction Project	\$4.00	<input checked="" type="radio"/>
	Ferry Boat Discretionary (FBD) Program Total		\$4.00	
	Surface Transportation Program	Brooklyn Bridge Rehabilitation	\$30.00	<input checked="" type="radio"/>
		Bruckner Expressway Bridges (2) Replacement of Protective Coating	\$3.50	<input checked="" type="radio"/>
		Comp Rehab of 12 Roadway Bridges Citywide	\$2.50	<input checked="" type="radio"/>
		Greenpoint Avenue Bridge over Newtown Creek Rehabilitation	\$2.50	<input checked="" type="radio"/>
		Wards Island Pedestrian Bridge Upgrades	\$1.50	<input checked="" type="radio"/>
	Surface Transportation Program Total		\$40.00	
	Transit Capital Assistance - St. George Ferry Terminal	St. George Ferry Terminal	\$475.00	<input checked="" type="radio"/>

ORACLE

Effectively Leveraging Business Intelligence

Other Best-Practices Examples

Organization	Application	Benefit Realized from BI
Army Logistics	Supply chain management for 40,000 users	Better understanding of supply utilization rates, more effective re-allocation of assets, reduced customer wait time & operating expenses, plus improved budgeting process
Starbucks	Store and SKU reporting integrated with Hyperion Planning	Effectively monitor store and item profitability, plus add forward-modeling of the impact of store reorganizations
Social Security Admin	Disability Fraud Prevention	Able to prevent enough fraud to pay for the BI system within 1 year
TDBank	Replace old, inflexible Budget/Forecast Modeling	Switch from data entry to data analysis, as well as provide more detailed analysis
US Forest Service	Performance vs Budget Accountability for 10,000 users	Monitor spending, and create better justification for their future budget requests

Potential Areas to focus on first

- Budget Formulation
 - Complex Policy Impact Analysis (Health Benefits Exchange, Tax Law changes, Medicaid changes etc.)
 - Assistance Revenue Forecasting (Corporate Income Tax changes)
- Execution
 - Revenue Collections
 - Fraud Detection and Prevention
 - Probability to Pay Analysis
 - Staff Optimization (Corrections)
 - Expenditure Analysis
 - Spend Rate vs Budget
 - Off-Contract Spending

General Assembly Data Analytics Center of Excellence

- Create a small, focused analytics team with current staffs
- Prioritize solutions based on time to implement and ROI
- Pull data from the sources and aggregate at the Legislature
- Keep it simple....focus on ease of use
- Start small to generate success
- Expand as expertise grows

Next Steps

- Oracle Insight Program
- Demonstration

Contact Information:

Randy Parrett

919-744-176

randy.parrett@oracle.com

Q&A

Oracle Business Intelligence Solutions

Be the First
to Know



ORACLE®

SOFTWARE. HARDWARE. COMPLETE.